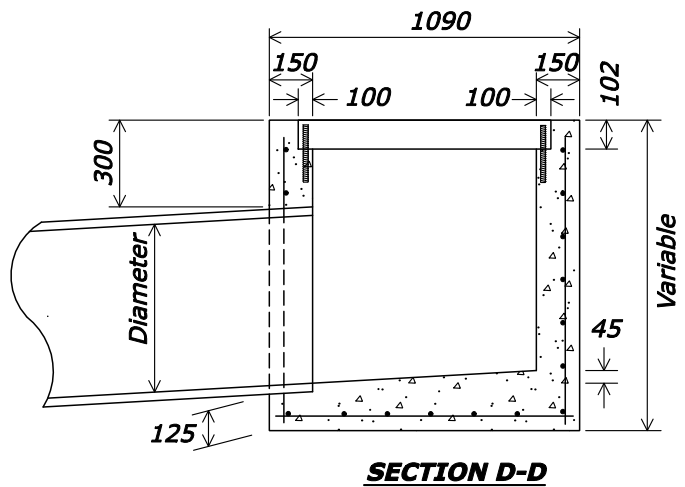
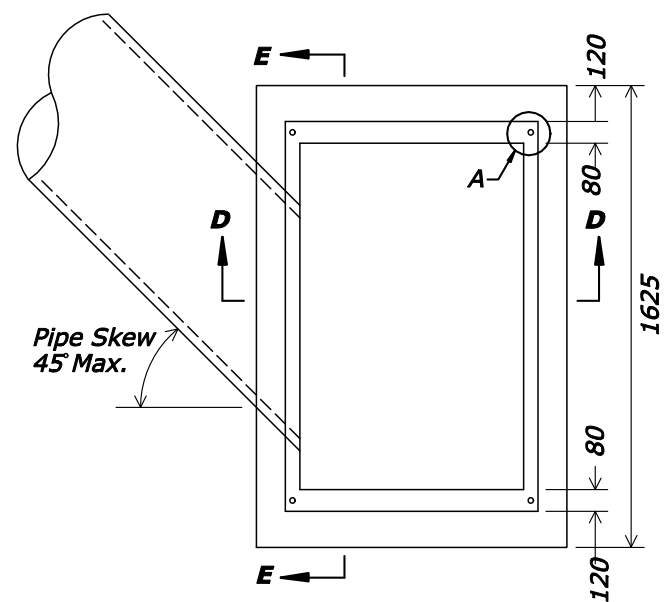
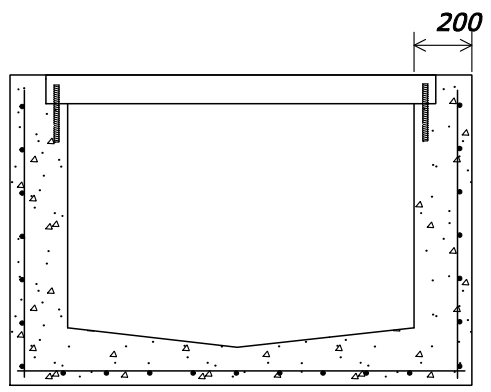


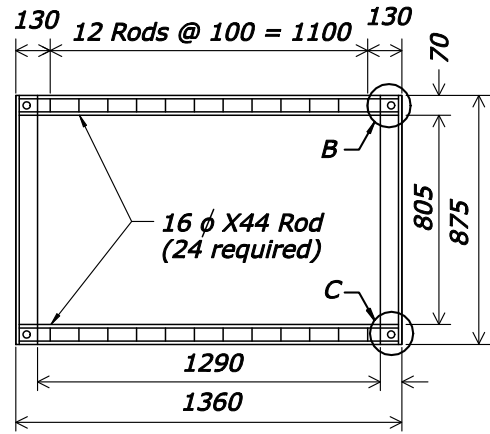
REG	STATE	PROJECT	SHEET NO.
SE	LA	RRP-LOP 10(2)	



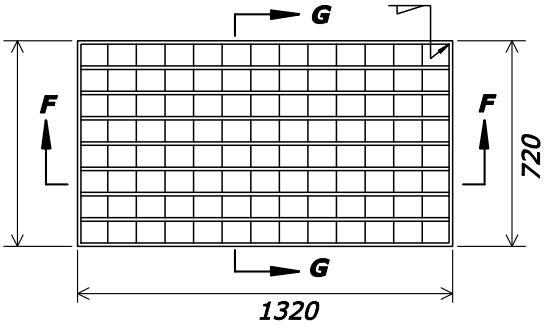
SECTION D-D



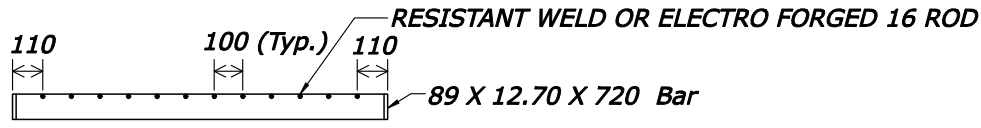
SECTION E-E



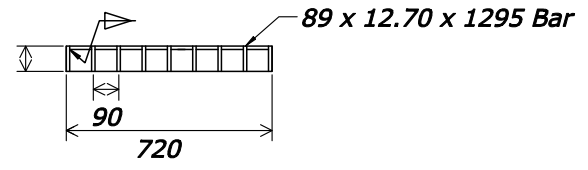
GRATE FRAME



SECTION F-F

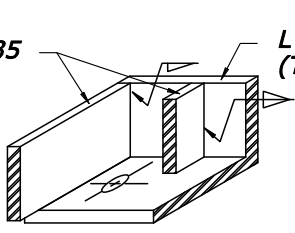


SECTION G-G

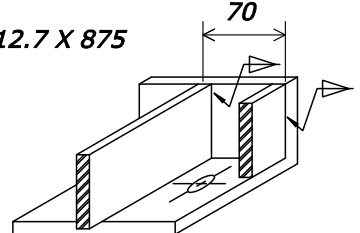


SECTION G-G

89 X 12.70 X 1335
(Two req'd.)



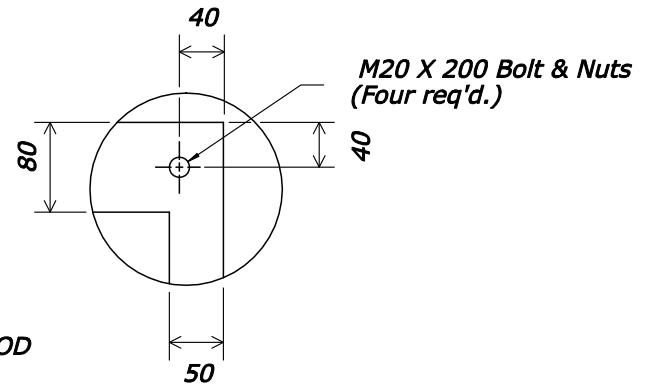
**VIEW-B
(Oblique)**



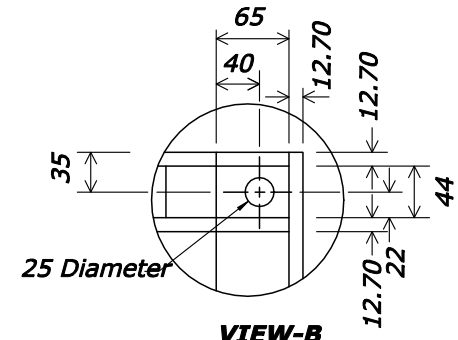
**VIEW-C
(Oblique)**

Notes:

1. Unless otherwise shown, dimensions are in millimeters.
2. All reinforcing bars shall be #16 placed 40 mm minimum from face of concrete.
3. In floors, place bars on 150 mm centers each way. In walls, place horizontal bars on 150 mm centers and vertical bars on 300 mm centers.
4. Hot dip galvanize all metal parts of frame and grate after fabrication. Fabricate frame and grating from structural steel.



VIEW-A



VIEW-B

NO SCALE

U.S. DEPARTMENT OF TRANSPORTATION FEDERAL HIGHWAY ADMINISTRATION EASTERN FEDERAL LANDS HIGHWAY DIVISION	
METRIC DETAIL	
INLET TYPE 5B	
DETAIL APPROVED FOR USE	DETAIL
REVISED: 01/08	EM604-04

3/25/2008 10:32:37 AM Z:\Standards\temp\st60404_detail.dgn