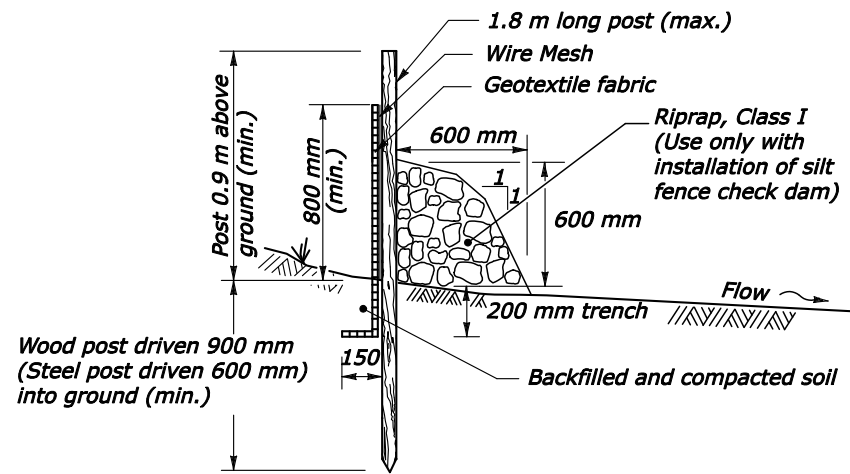


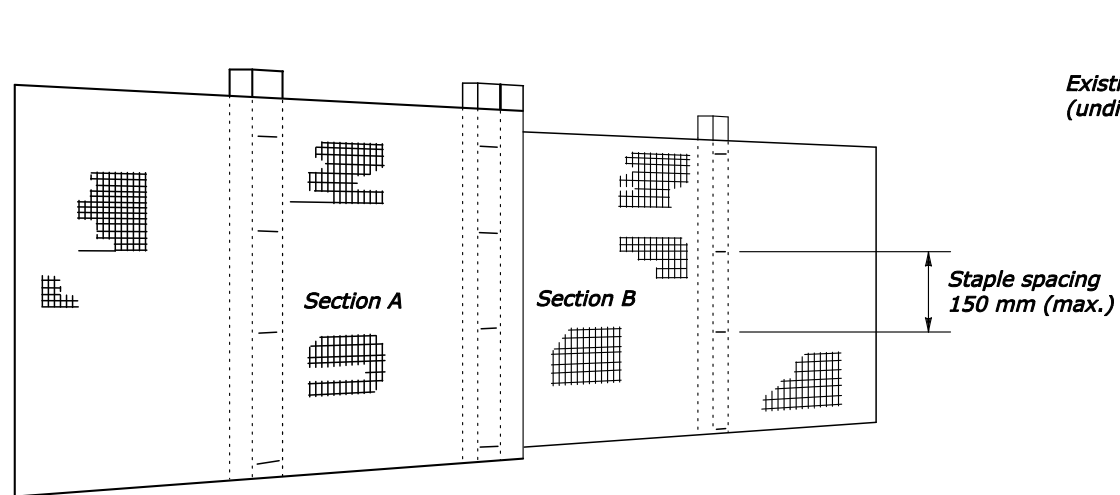
WIRE-BACKED SILT FENCE CHECK DAM
(See note 2)



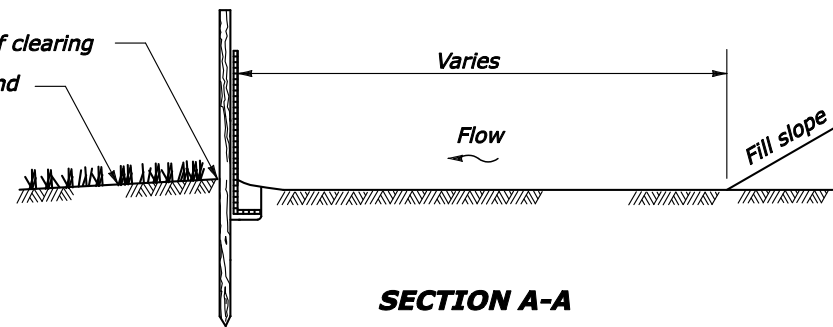
SECTION B-B

NOTES:

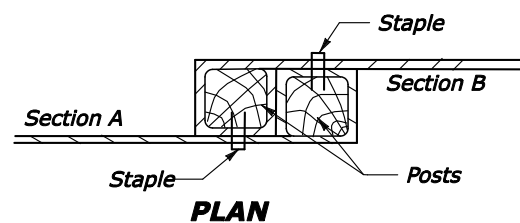
1. Dimensions not labeled are in millimeters.
2. Use silt fence check dam installation for low flow conditions only when specified on Erosion Control Plan.
3. Alternate pre-assembled silt fence options will be allowed as long as specified minimums are satisfied. Follow manufacturer's information for installation procedures.
4. Wire mesh shall be a minimum of 800 mm in width and shall have a minimum of 6 line wires with 300 mm stay spacing.
5. Filter fabric shall be a minimum of 1150 mm in width and shall be fastened adequately to the wire as directed by the CO.
6. Steel post shall be 1500mm minimum in height and be of the self-fastener angle steel type.
7. Wood post shall be 1800mm minimum in height and 75mm in diameter.
8. Extend wire and fabric into trench.



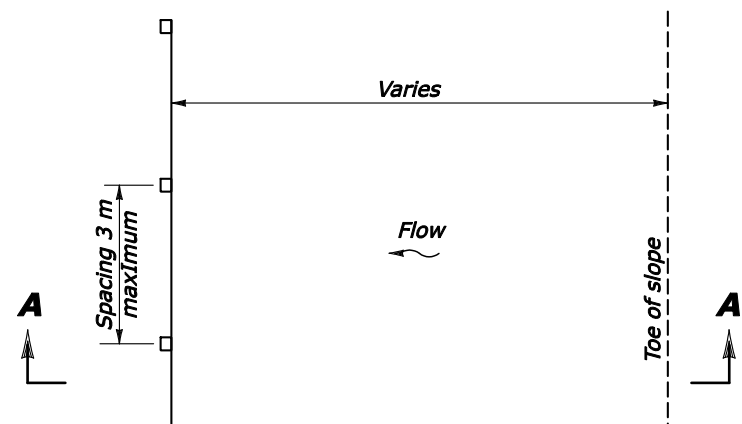
ELEVATION



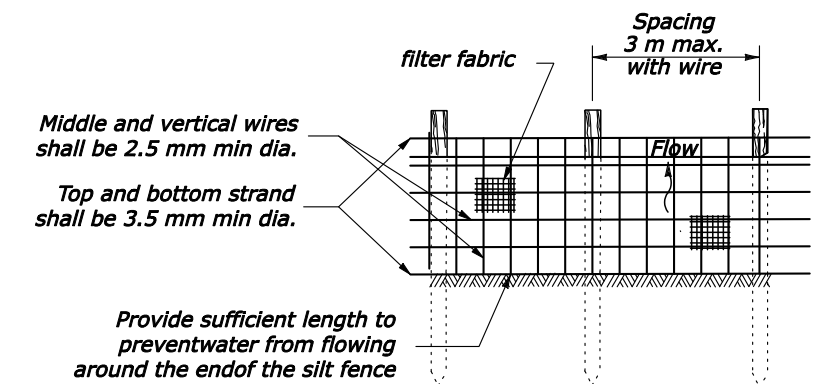
SECTION A-A



PLAN



PLAN



ELEVATION

JOINING TWO ADJACENT SILT FENCE SECTIONS

WIRE-BACKED SILT FENCE INSTALLATION AT TOE OF FILL

U.S. DEPARTMENT OF TRANSPORTATION FEDERAL HIGHWAY ADMINISTRATION EASTERN FEDERAL LANDS HIGHWAY DIVISION	
METRIC DETAIL	
WIRE-BACKED SILT FENCE	
DETAIL APPROVED FOR USE	DETAIL
REVISED: 06/99 04/07	EM157-02

NO SCALE