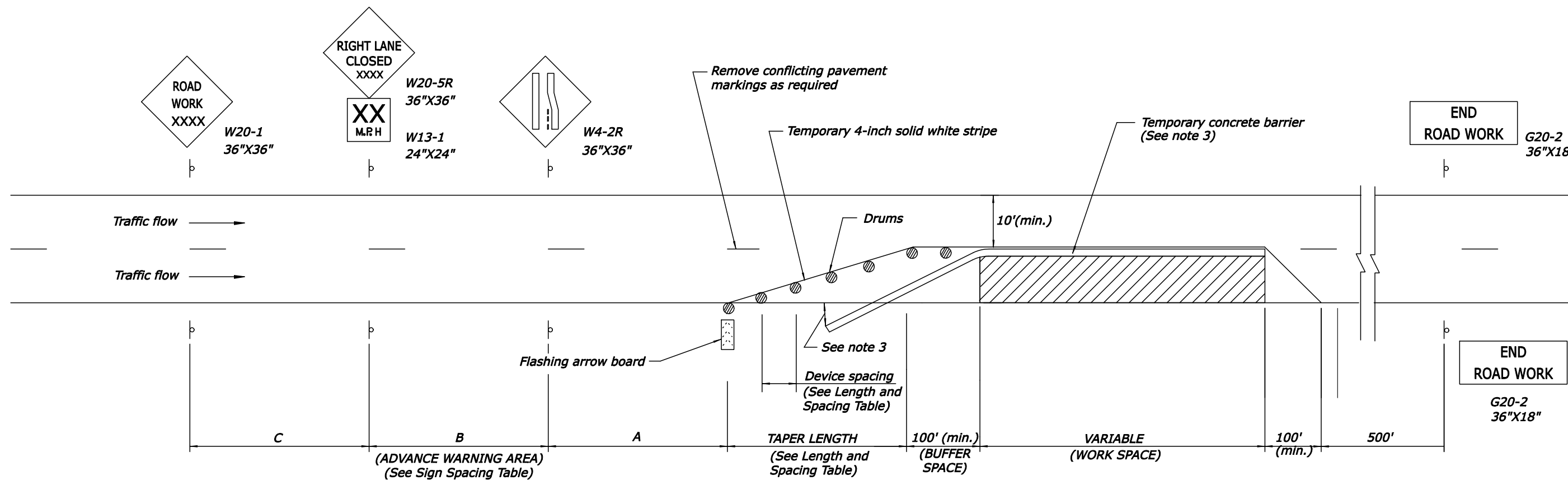


TYPICAL APPLICATION: ONE WAY, TWO LANE ROADWAY, CLOSING ONE LANE, USING TEMPORARY BARRIER



NOTES:

- Final location and spacing of signs and devices may be changed to fit field conditions as approved by the CO.
- Barrier placement is in accordance with the Roadside Design Guide, latest edition, by the American Association of State Highway and Transportation Officials (AASHTO). Terminate barrier ends outside the clearzone or protect the ends of the barrier with an impact attenuator.
- Right lane closure is shown. For left lane closure, substitute signing with W20-5L and W4-2L.

CHANNELIZING DEVICE TABLE

APPROACH SPEED (MPH)	MINIMUM TAPER LENGTH (FT)			CHANNELIZING DEVICE SPACING (FT.)		CONCRETE BARRIER FLARE RATE
	LANE WIDTH			TAPER AREA	WORK AREA	
	10 ft.	11 ft.	12 ft.			
25	105	115	125	25	50	6.5 : 1
30	150	165	180	30	60	8 : 1
35	205	225	245	35	70	9.3 : 1
40	270	295	320	40	80	10.6 : 1
45	450	495	540	45	90	12 : 1
50	500	550	600	50	100	13.5 : 1
55	550	605	660	55	100	15 : 1

ADVANCE WARNING SIGN SPACING CHART

POSTED SPEED LIMIT (MPH)	Recommended Distance Between Signs (feet)		
	A	B	C
≤ 35	200	200	200
40-50	350	350	350
55	500	500	500
Expressway/Urban Parkway	1000	1600	2600

* Speed is based on the regulatory posted speed and not the traffic control warning speed.

NO SCALE

U.S. DEPARTMENT OF TRANSPORTATION
FEDERAL HIGHWAY ADMINISTRATION
EASTERN FEDERAL LANDS HIGHWAY DIVISION

U.S. CUSTOMARY DETAIL

**CONSTRUCTION TRAFFIC CONTROL
SINGLE LANE CLOSURE LAYOUT
(WITH TEMPORARY CONCRETE BARRIER)**

DETAIL APPROVED FOR USE

REVIS: 04/02 03/07

DETAIL
E635-12

9/20/2007 9:02:08 AM M:\Standard\FE\FHD_Standards & Detail\SV06\63512_detail.dgn