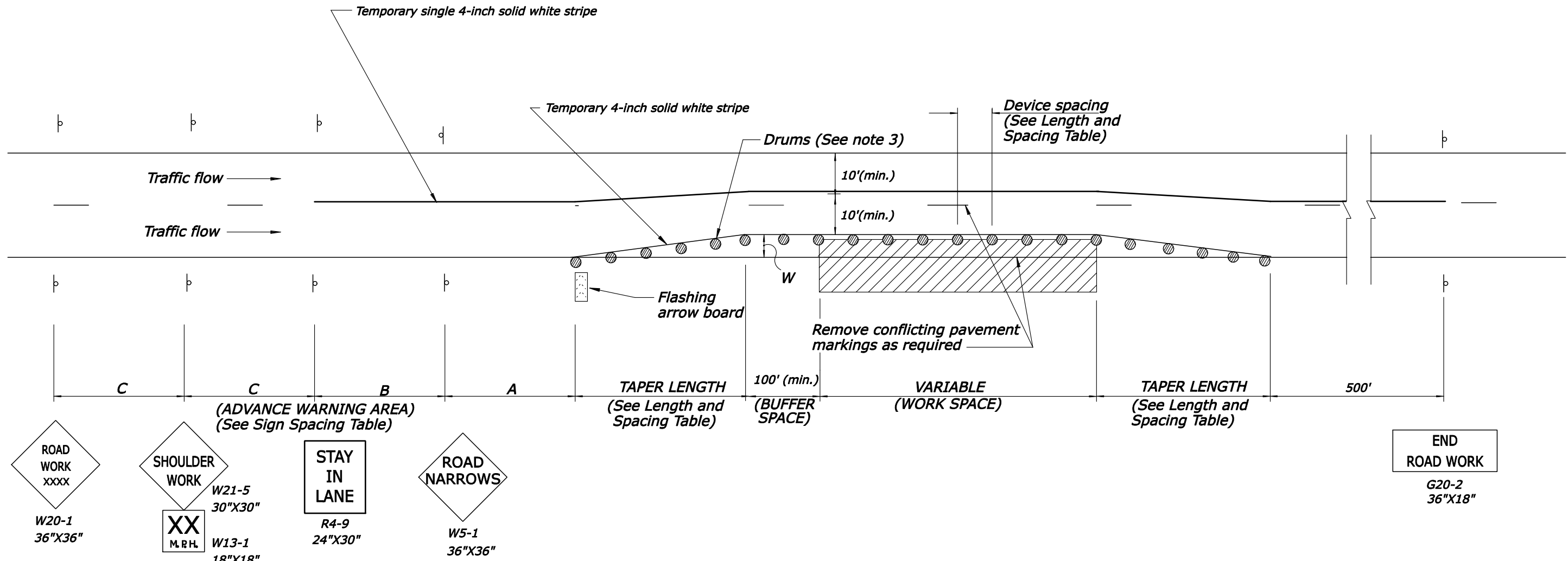


TYPICAL APPLICATION: ONE WAY, TWO LANE ROADWAY, CLOSING PARTIAL LANE WIDTH AND SHOULDER



NOTES:

- Final location and spacing of signs and devices may be changed to fit field conditions as approved by the CO.
- For operations that require a shoulder closure for a day or less, drums may be substituted with cones, type A, in the Work Area.
- Repeat signs on both sides of the roadway.

CHANNELIZING DEVICE TABLE

APPROACH SPEED (MPH)	MINIMUM TAPER LENGTH (FT)	CHANNELIZING DEVICE SPACING (FT)	
		TAPER AREA	WORK AREA
25	<i>Taper formula:</i> $L = \frac{WS^2}{2}$ for speeds of 45 or greater $L = \frac{WS^2}{120}$ for speeds of 40 or less <i>Where:</i> L = Minimum length of taper S = Numerical value of posted speed limit prior to work area or 85 percentile speed W = Width of offset	25	50
30		30	60
35		35	70
40		40	80
45		45	90
50		50	100
55	55	100	

* Speed is based on the regulatory posted speed and not the traffic control warning speed.

ADVANCE WARNING SIGN SPACING CHART

POSTED SPEED LIMIT (MPH)	Recommended Distance Between Signs (feet)		
	A	B	C
≤ 35	200	200	200
40-50	350	350	350
55	500	500	500
Expressway/Urban Parkway	1000	1600	2600

NO SCALE

U.S. DEPARTMENT OF TRANSPORTATION
FEDERAL HIGHWAY ADMINISTRATION
EASTERN FEDERAL LANDS HIGHWAY DIVISION

U.S. CUSTOMARY DETAIL

**CONSTRUCTION TRAFFIC CONTROL
ONE WAY, TWO LANE ROAD SHOULDER
WORK WITH MINOR ENCROACHMENT
(WITHOUT BARRIER)**

DETAIL APPROVED FOR USE	DETAIL
REVISED: 04/02 03/07	E635-08