

**STEEL POST FOOTING DATA TABLE**

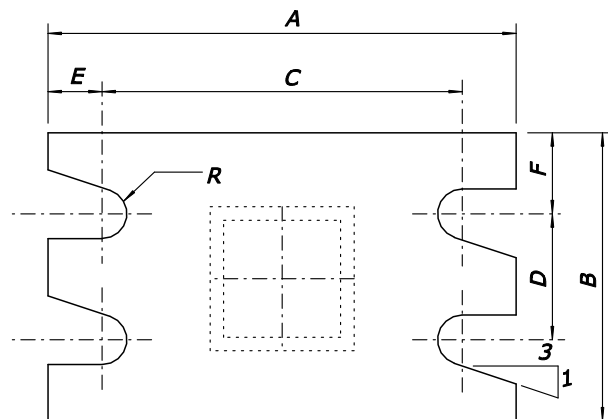
POST SIZE	NOMINAL SIZE (IN.)	STUB		FOOTING	
		PROJ.	LENGTH	DIA.	MINIMUM DEPTH
a	2 X 2	4"	2'	12"	3'
b	3 X 4	4"	2'	15"	3'
c	4 X 6	4"	2'	15"	3'

**STEEL POSTS FOR GROUND MOUNTED SIGNS**

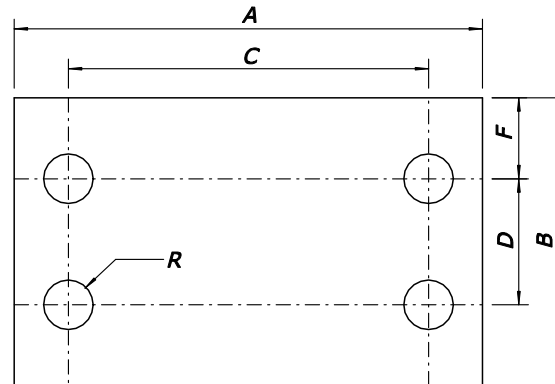
POST SIZE	NOMINAL SIZE (IN.)	BOLT SPECIFICATIONS	BASE CONNECTION DATA TABLE (Inches)										
			A	B	C	D	E	F	t <sub>1</sub>	t <sub>2</sub>	w	R	
a	2 X 2	5/8"Ø X 2 1/2" HS 450 IN. - LBS.	6 1/2	4	5	1 3/4	3/4	1 1/8	5/8	3/16	3/16	11/16	
b	3 X 4		8 1/2	4	7	1 3/4	3/4	1 1/8	5/8	3/16	1/4	11/16	
c	4 X 6	5/8"Ø X 3" HS 450 IN - LB	10	5	8 1/2	2 1/2	3/4	1 1/4	3/4	1/4	5/16	11/16	

**FUSE PLATE DATA TABLE (Inches)**

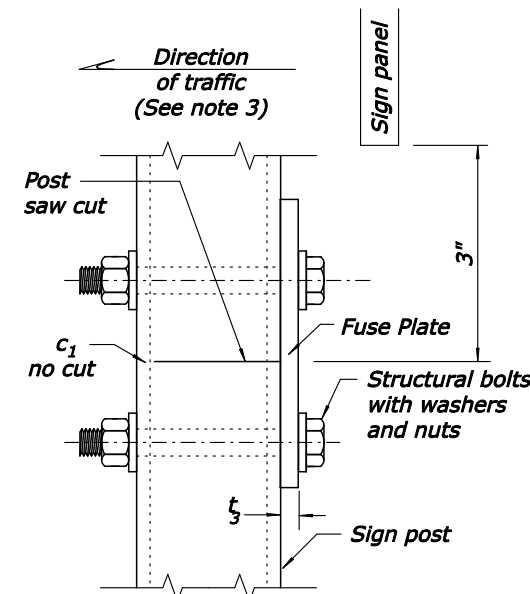
POST SIZE	G	H	J	K	L	M	N	d <sub>1</sub>	t <sub>2</sub>	C <sub>1</sub>	BOLT DIAM.	TORQUE FT.-LBS.
a	4	2 1/4	1 1/8	2	7/8	9/16	5/8	7/16	1/4	1/4	3/8	200
b	4	2 1/4	1 1/8	3	1 1/4	7/8	5/8	9/16	5/16	1/4	1/2	200
c	4 1/2	2 3/8	1 1/4	4	1 3/4	1 1/8	7/8	1 1/16	3/8	3/8	5/8	200



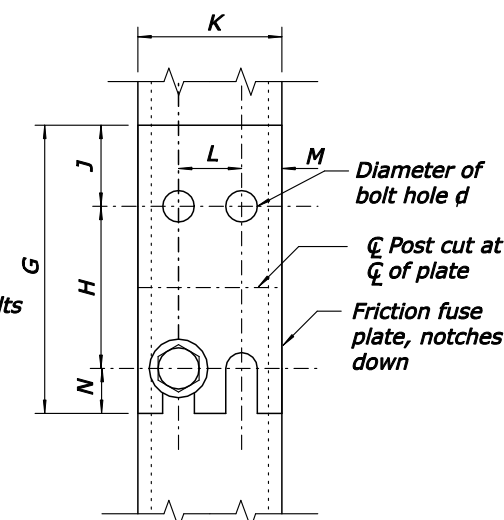
**SECTION A-A  
BREAKAWAY PLATE**



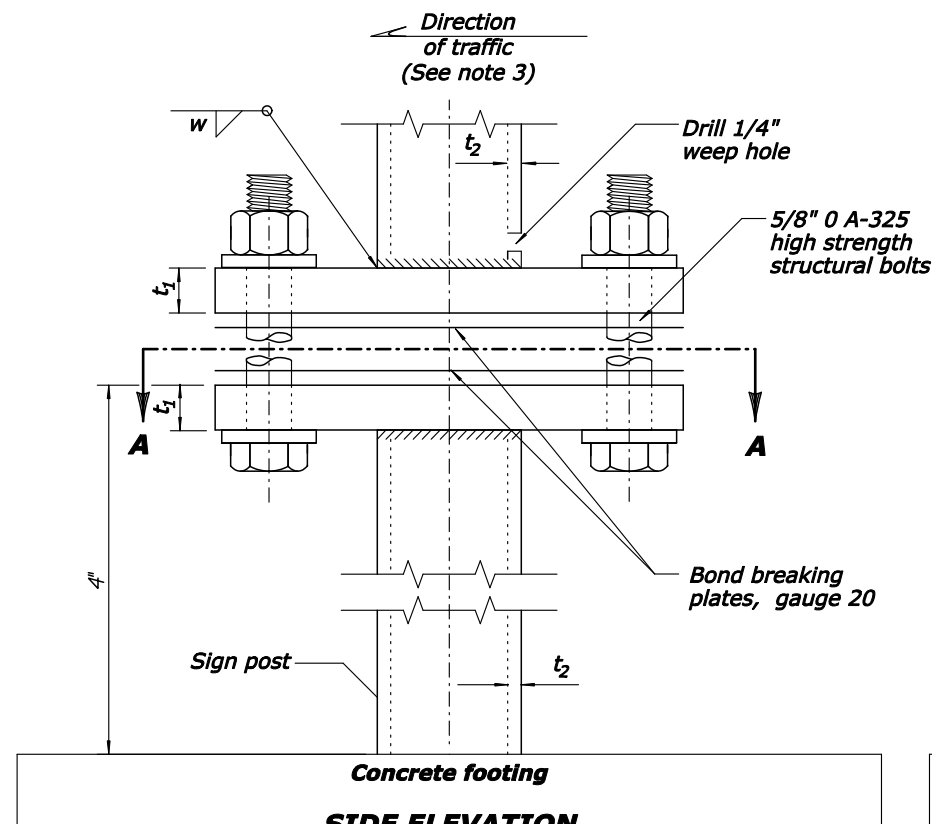
**BOND BREAKING PLATE**



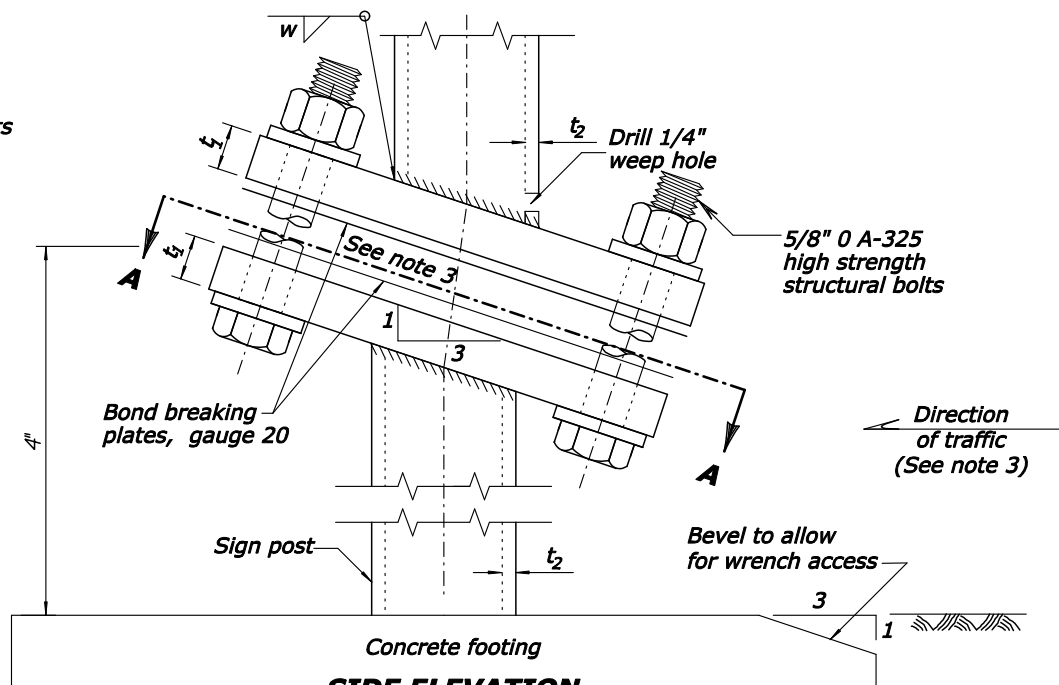
**SIDE ELEVATION**



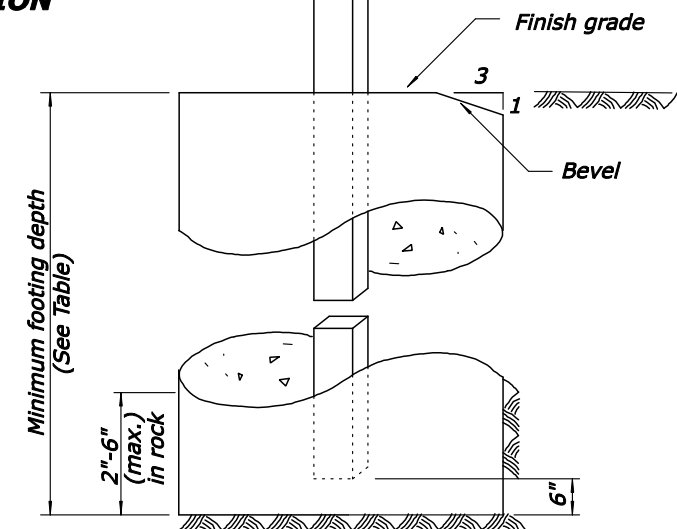
**FRONT ELEVATION  
(See Note 5)**



**SIDE ELEVATION  
(See Note 4)  
MULTIPLE POST**



**SIDE ELEVATION  
SINGLE POST**



**CONCRETE FOOTING DETAILS**

**NOTES:**

1. Breakaway design is not required for signs placed behind protective barriers.
2. Breakaway assembly to be installed in the direction of major traffic.
3. The multiple post breakaway detail to be used on single posts in medians where exposed to opposing lanes of traffic.
4. Fuse plates are to be used on multiple post installations only.
5. The breakaway plates, only are to be painted brown to match the final appearance of the weathering steel posts.

U.S. DEPARTMENT OF TRANSPORTATION  
FEDERAL HIGHWAY ADMINISTRATION  
EASTERN FEDERAL LANDS HIGHWAY DIVISION

U.S. CUSTOMARY DETAIL

**BREAKAWAY SIGN SUPPORT,  
WEATHERING STEEL**

DETAIL APPROVED FOR USE

REVIS: 07/98 03/07

DETAIL  
E633-02

NO SCALE