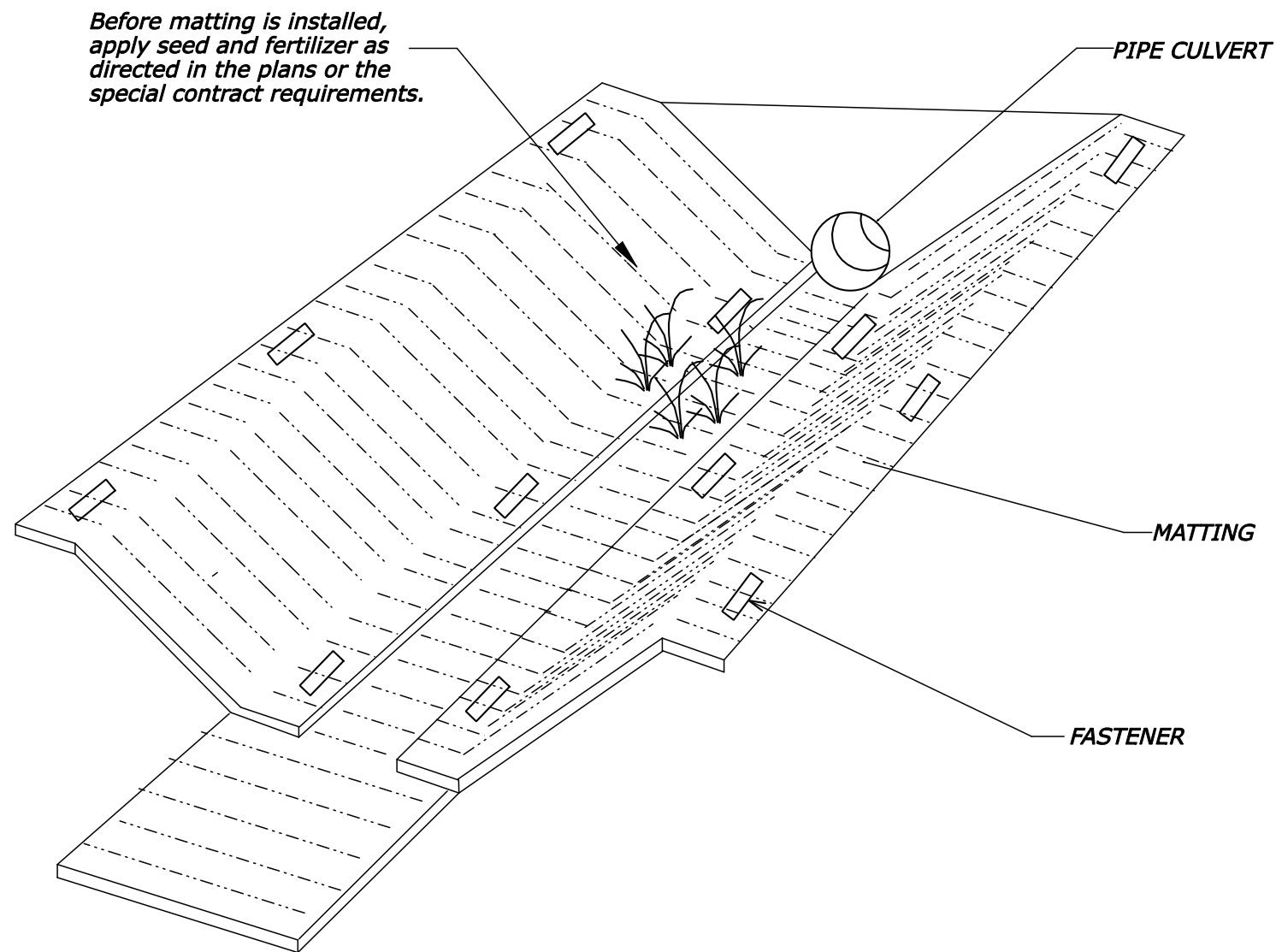


REG	STATE	PROJECT	SHEET NO.
SE	LA	RRP-LOP 10(2)	



DETAIL FOR STABILIZING PIPE INLETS WITH MATTING

NO SCALE

U.S. DEPARTMENT OF TRANSPORTATION FEDERAL HIGHWAY ADMINISTRATION EASTERN FEDERAL LANDS HIGHWAY DIVISION	
U.S. CUSTOMARY DETAIL	
PIPE INLET STABILIZATION	
DETAIL APPROVED FOR USE	DETAIL
REVISED: 1/08	E629-03