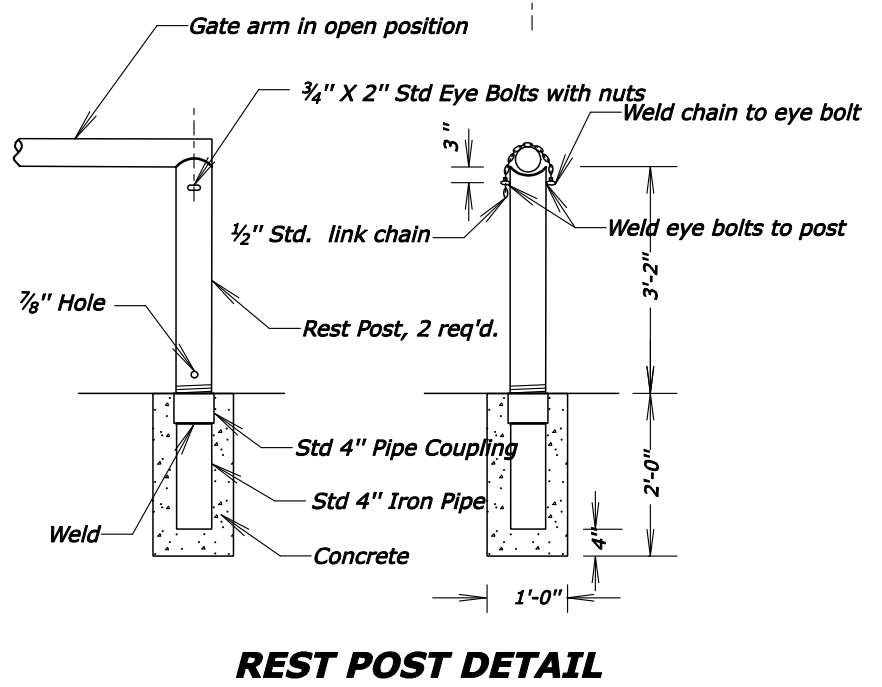
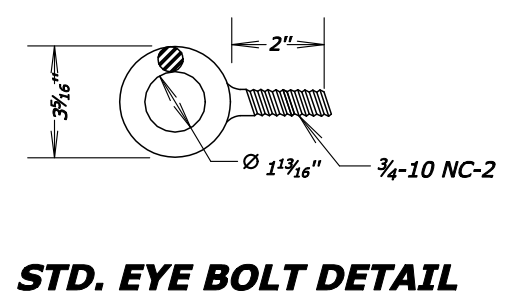
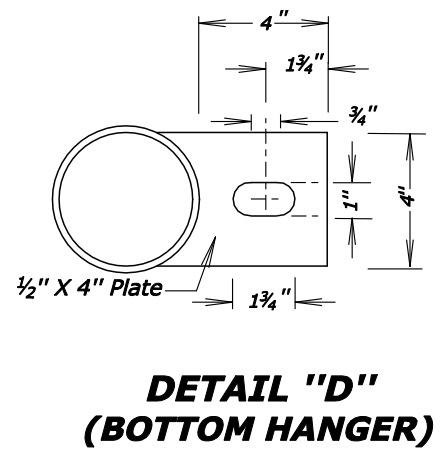
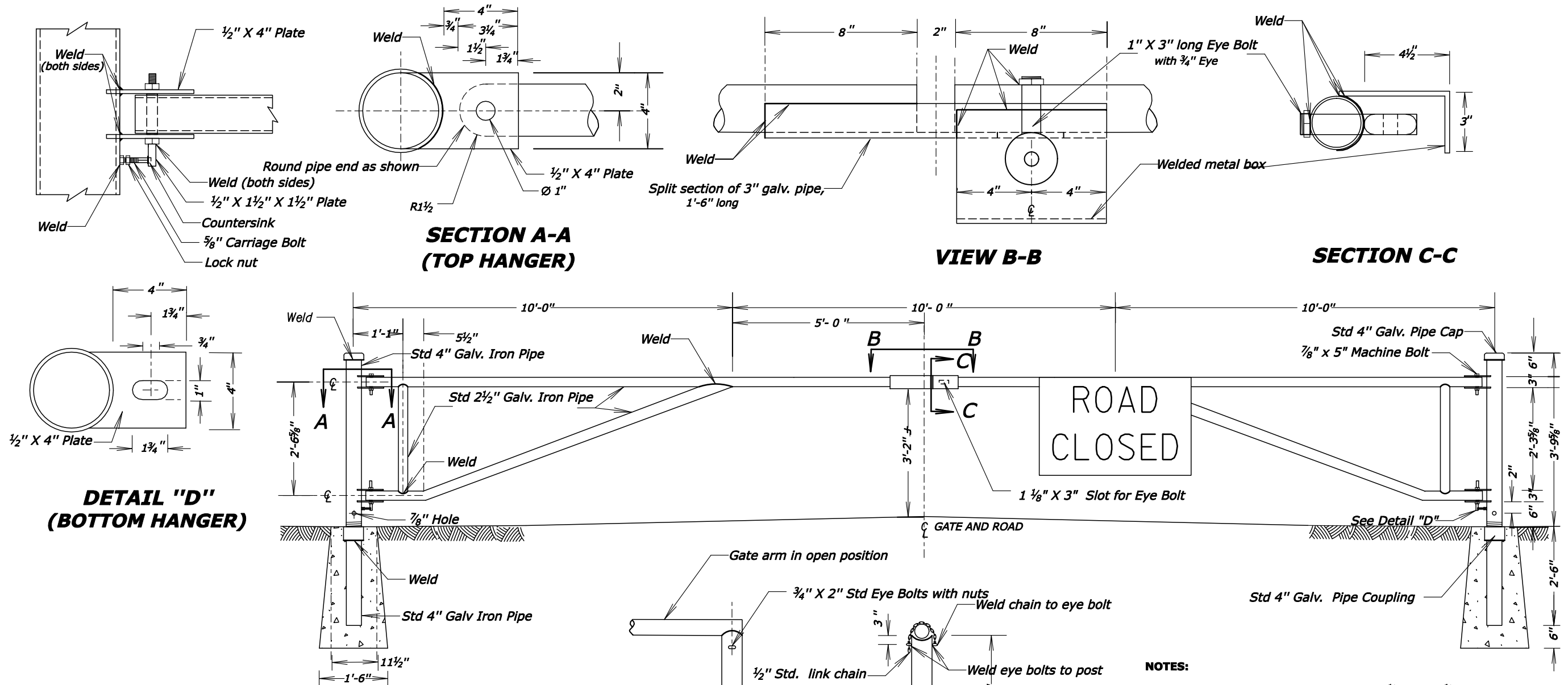


REG	STATE	PROJECT	SHEET NO.
SE	LA	RRP-LOP 10(2)	



- NOTES:**
1. Close top end of Rest Posts with 4 1/2" dia. X 1/8" thick steel plate, form to fit and weld in place.
 2. Gates and posts to be painted either alternating black and reflectorized white 4-inch stripes at 45° or use galvanized metal parts, as directed by CO.
 3. Mount one "Road Closed" sign on gate as shown. Center the sign over the lane carrying the incoming traffic.

U.S. DEPARTMENT OF TRANSPORTATION
FEDERAL HIGHWAY ADMINISTRATION
EASTERN FEDERAL LANDS HIGHWAY DIVISION

U.S. CUSTOMARY DETAIL

**METAL GATE
30 FEET**

DETAIL APPROVED FOR USE	DETAIL
REVISED: 3/08	E619-06

3/27/2008 12:16:39 PM Z:\Standard\temp\sf61906_detail.dgn