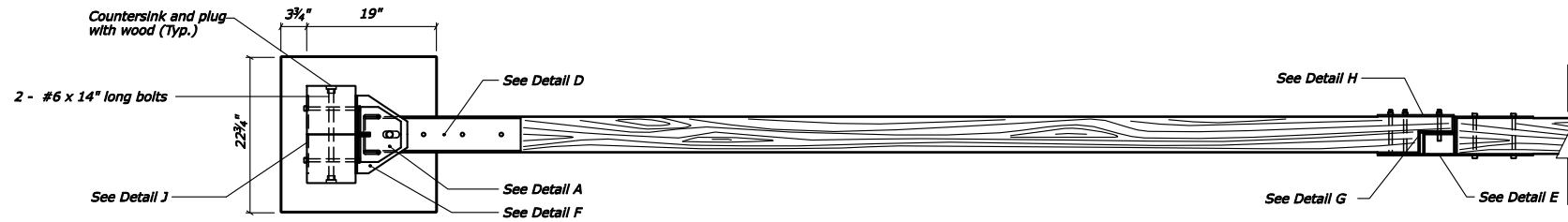
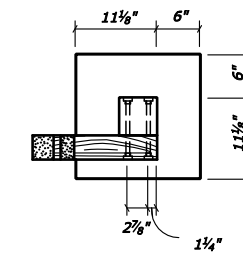


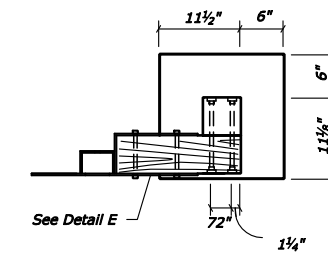
REG	STATE	PROJECT	SHEET NO.
SE	LA	RRP-LOP 10(2)	



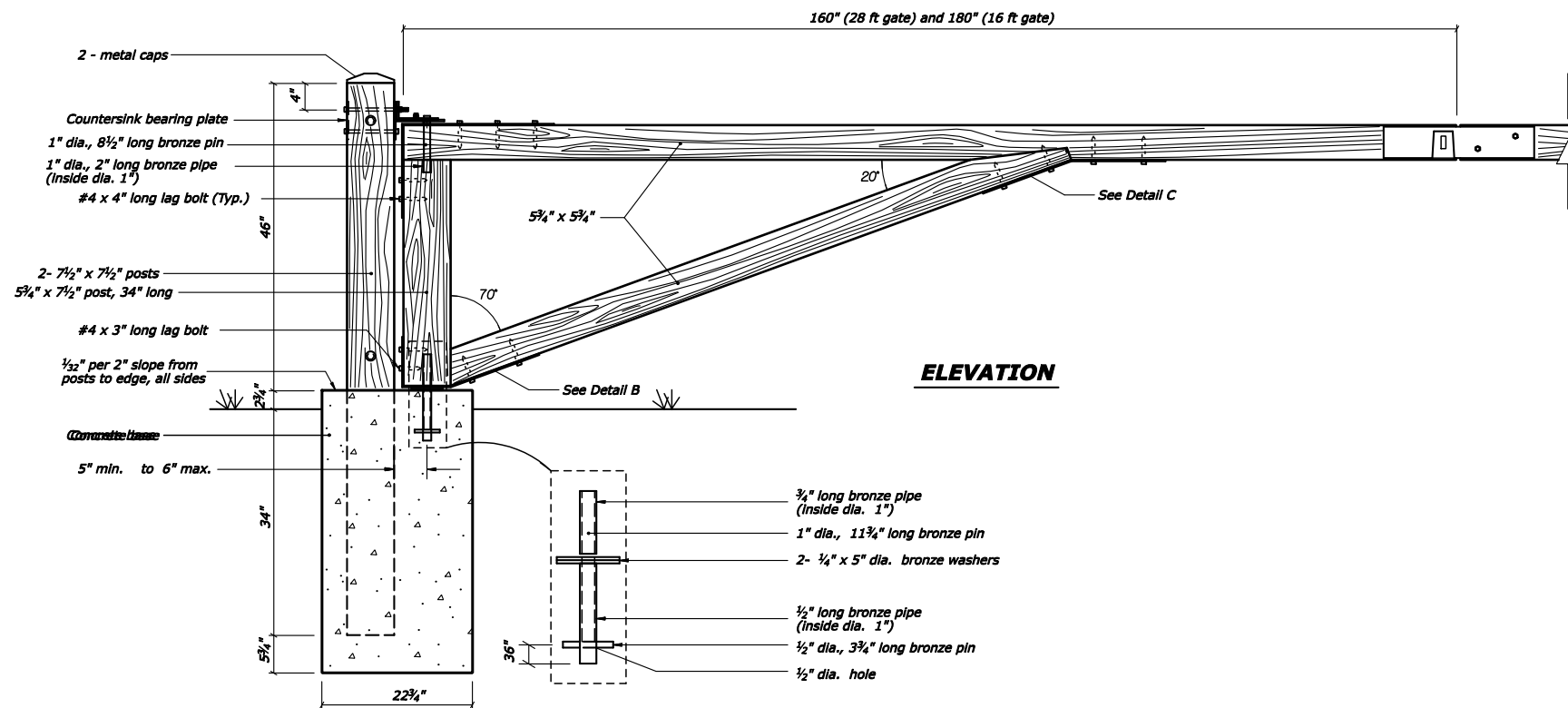
PLAN



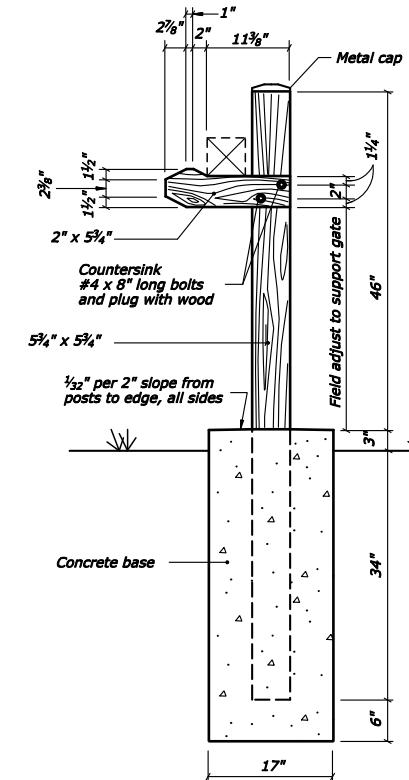
REST POST PLAN



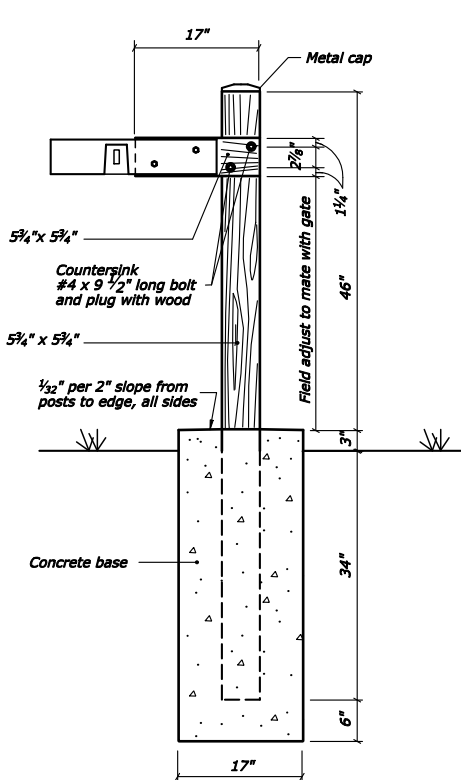
LOCK POST PLAN



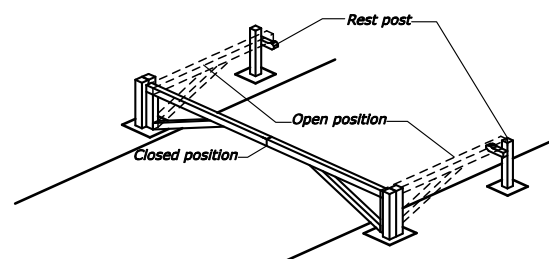
ELEVATION



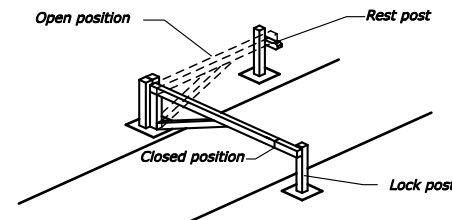
REST POST ELEVATION



LOCK POST ELEVATION



ISOMETRIC VIEW OF 28-FOOT GATE



ISOMETRIC VIEW OF 16-FOOT GATE

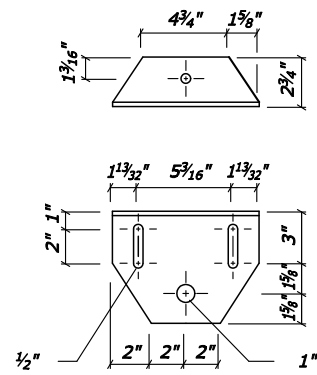
NOTES:

1. All bolts #4 unless otherwise noted.
2. Use 1" dia. washers under all bolt heads and nuts unless otherwise noted.
3. All hardware, except parts made of bronze, are galvanized (double hot dipped) after fabrication.
4. Timbers are select douglas fir or southern yellow pine (S4S). Pressure treat posts embedded in concrete to 0.60 to 0.80 CCA. All other timbers are 0.40 CCA pressure treated. Apply three brush coats of CCA to all saw cut areas and drilled holes.
5. Contractor will make all necessary field adjustments (with approval from the CO) to produce a plumb gate.
6. Concrete to conform to section 601.

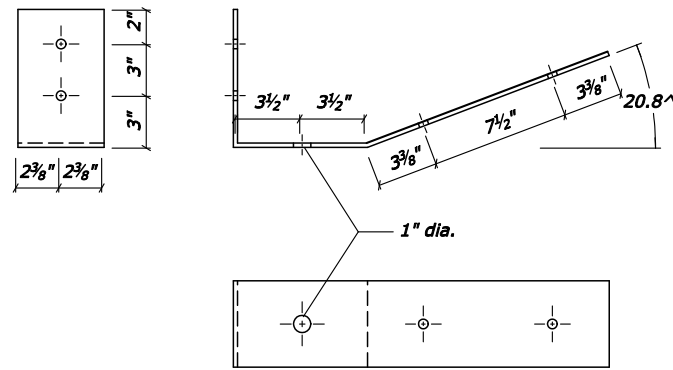
NO SCALE

U.S. DEPARTMENT OF TRANSPORTATION FEDERAL HIGHWAY ADMINISTRATION EASTERN FEDERAL LANDS HIGHWAY DIVISION	
U.S. CUSTOMARY DETAIL	
16 FT AND 28 FT GATES Sheet 1 of 2	
DETAIL APPROVED FOR USE	DETAIL
REVISED: 12/07	E619-04

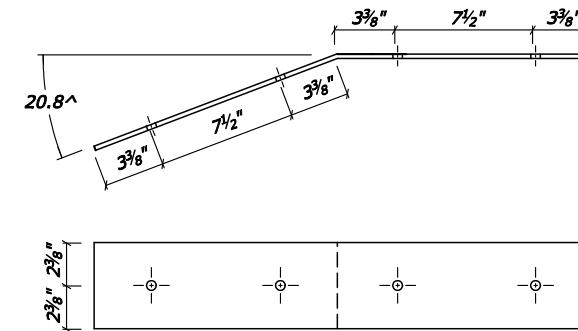
REG	STATE	PROJECT	SHEET NO.
SE	LA	RRP-LOP 10(2)	



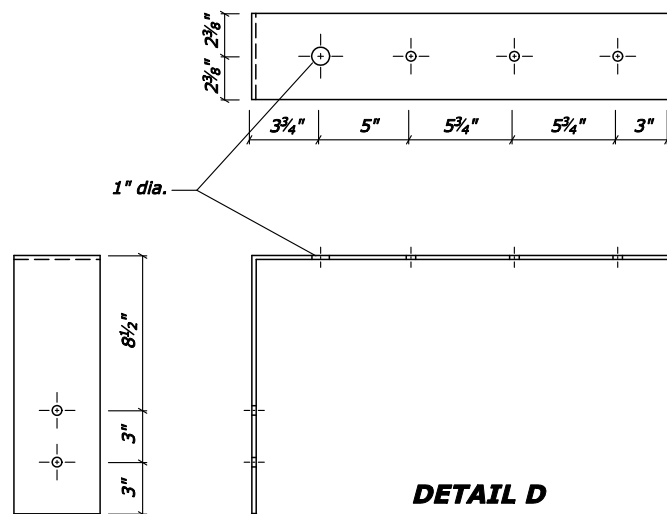
DETAIL A



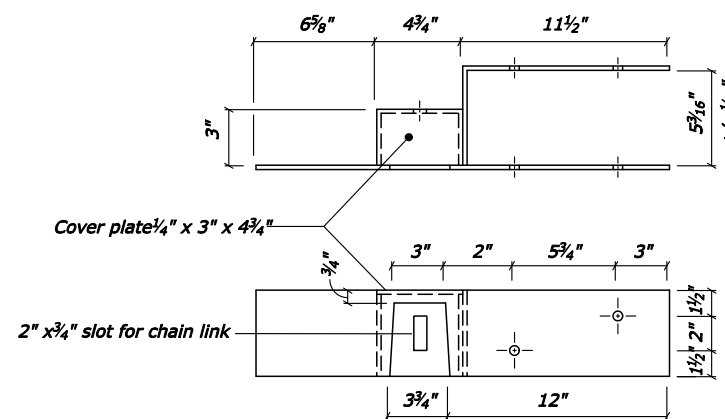
DETAIL B



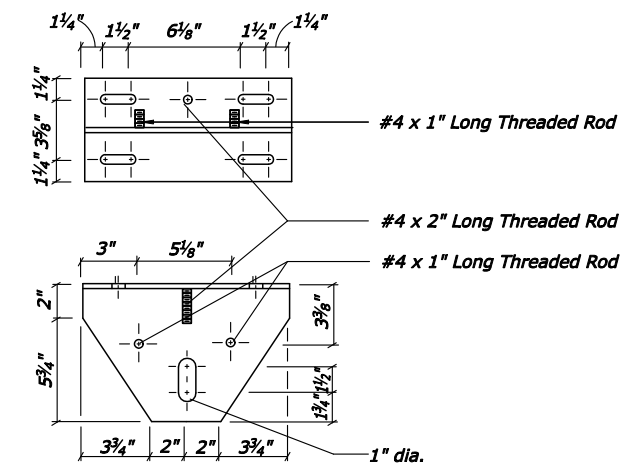
DETAIL C



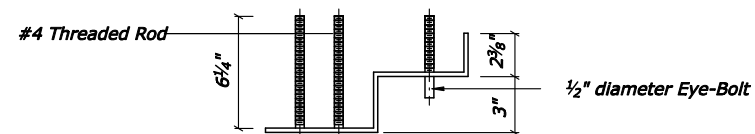
DETAIL D



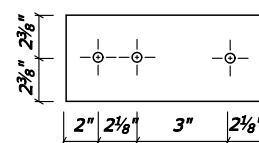
DETAIL E
(8.5 m GATE)



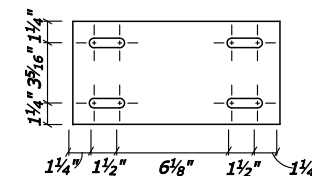
DETAIL F



DETAIL G



DETAIL H



DETAIL J

NOTES:

1. All steel plates to be 1/4" thick.
2. All holes 7/16" dia. unless shown.
3. All bolts 1/2" dia. unless shown.
4. All steel plates and hardware to be galvanized (double hot dipped after fabrication).
5. Contractor will verify all dimensions.

NO SCALE

U.S. DEPARTMENT OF TRANSPORTATION
FEDERAL HIGHWAY ADMINISTRATION
EASTERN FEDERAL LANDS HIGHWAY DIVISION

U.S. CUSTOMARY DETAIL

16 FT AND 28 FT GATES
Sheet 2 of 2

DETAIL APPROVED FOR USE

REVISED: 12/07

DETAIL

E619-04