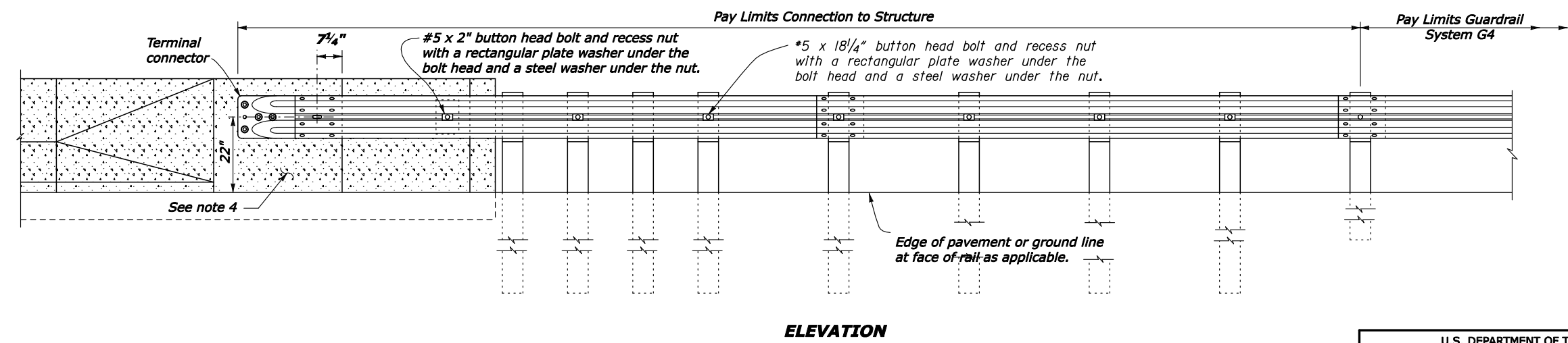
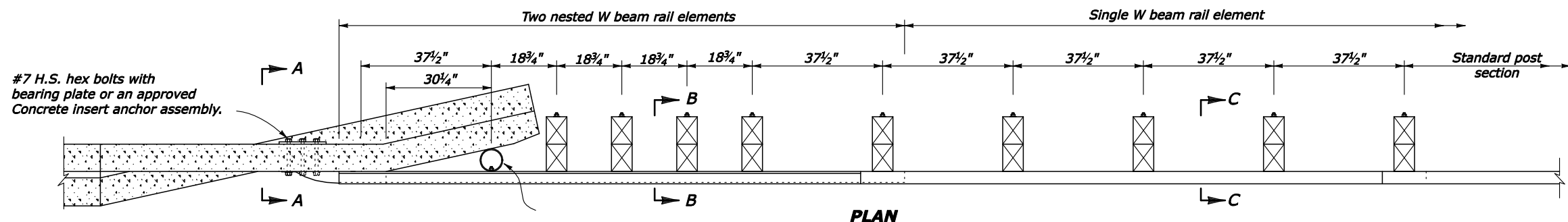


- NOTES:**
1. Reinforced concrete wall or bridge parapet must be capable of developing a 59.6 kips pull out strength.
 2. Connect steel spacer tube to rail element only.
 3. Where reinforced concrete flare back transition section is required, See Standard 617-32 or plan sheets, as appropriate, for details.



NO SCALE

U.S. DEPARTMENT OF TRANSPORTATION
 FEDERAL HIGHWAY ADMINISTRATION
 EASTERN FEDERAL LANDS HIGHWAY DIVISION

U.S. CUSTOMARY DETAIL

**G4 W BEAM GUARDRAIL
 CONNECTIONS TO STRUCTURE
 VERTICAL FLARED BACK WOOD POSTS**

DETAIL APPROVED FOR USE	DETAIL
REVISED: 1/08	E617-30