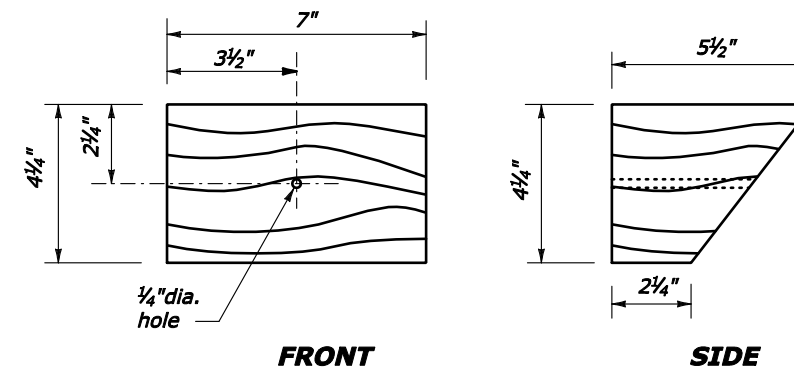
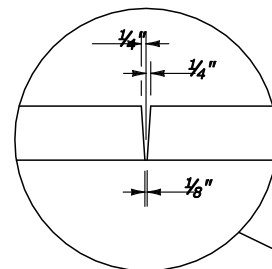
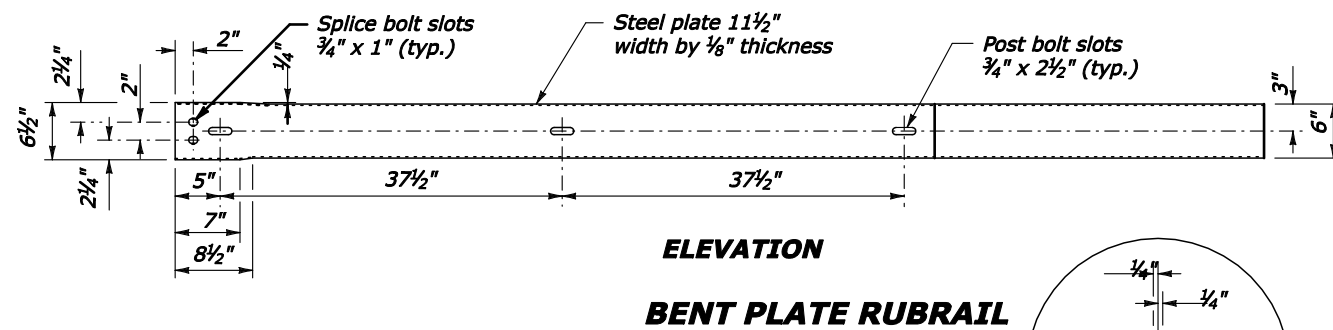
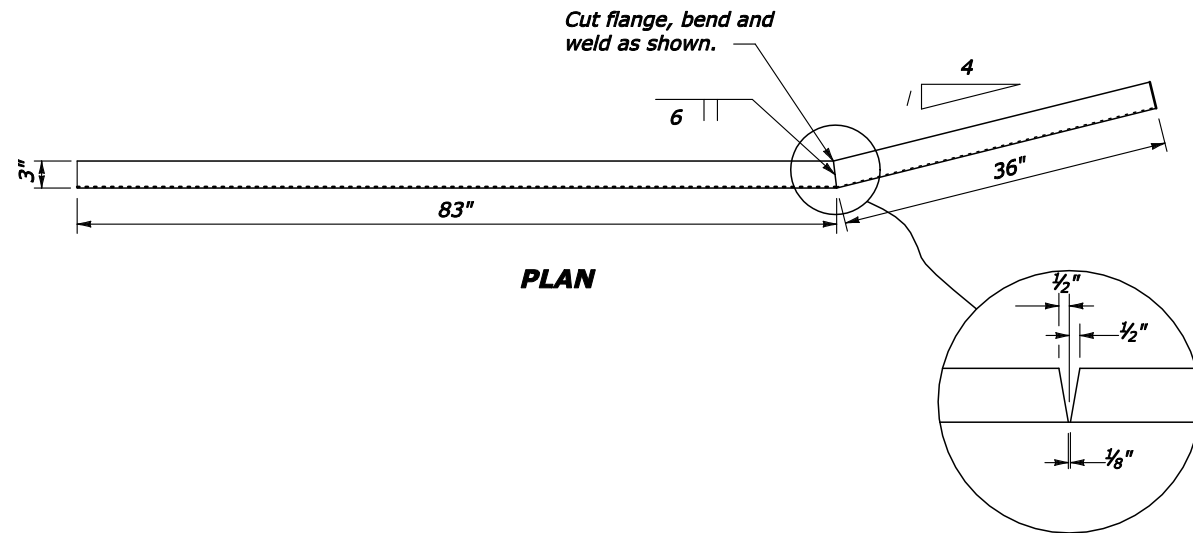
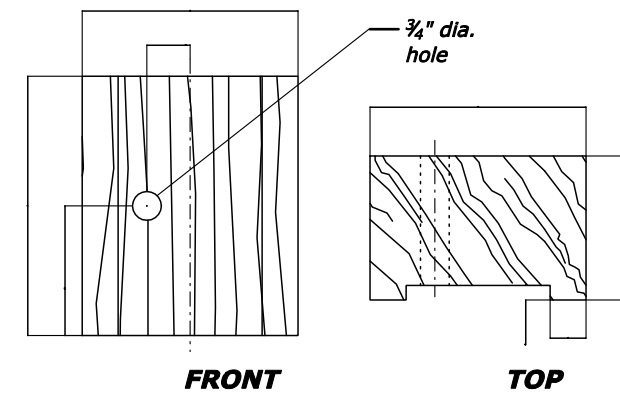


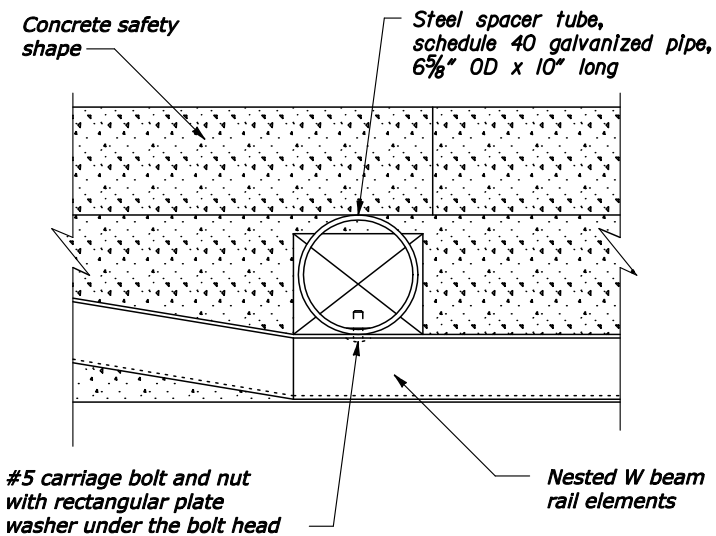
REG	STATE	PROJECT	SHEET NO.
SE	LA	RRP-LOP 10(2)	



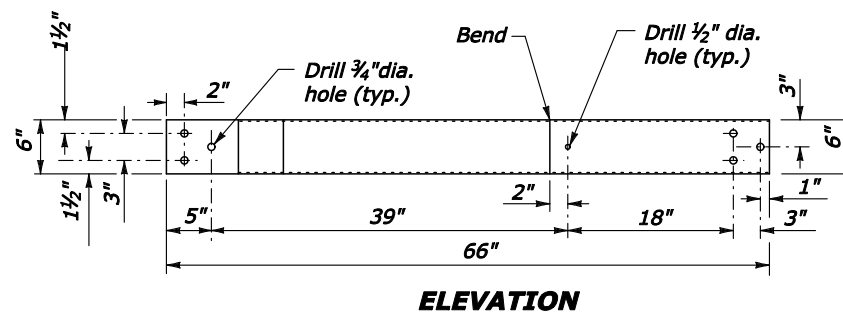
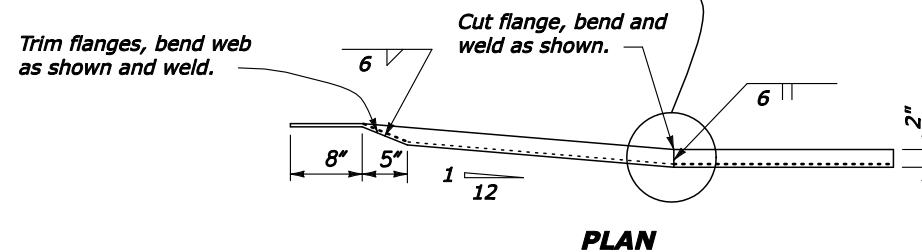
**WOOD BLOCKOUT FOR RUBRAIL ON CONCRETE SAFETY SHAPE**



**WOOD BLOCKOUT FOR RUBRAIL ON STEEL POSTS**



**STEEL SPACER BLOCK**



**C6" X 1/2" RUBRAIL**

**NOTES:**

1. Attach rubrail end flush with sloped toe of safety shape. Shop fabricate the C6" x 1/2" rubrail end 1/2" rubrail end to be consistent with the slope of safety shape. Both clockwise and counterclockwise fabrications may be required.
2. Dimensional tolerances not shown or implied are intended to be those consistent with the proper functioning of the part, including its appearance, and accepted manufacturing practices.

U.S. DEPARTMENT OF TRANSPORTATION FEDERAL HIGHWAY ADMINISTRATION EASTERN FEDERAL LANDS HIGHWAY DIVISION	
U.S. CUSTOMARY DETAIL	
<b>G4 BEAM GUARDRAIL CONNECTION TO STRUCTURE SAFETY SHAPE FACE RUBRAIL</b>	
DETAIL APPROVED FOR USE	DETAIL
REVISED: 3/08	E617-29