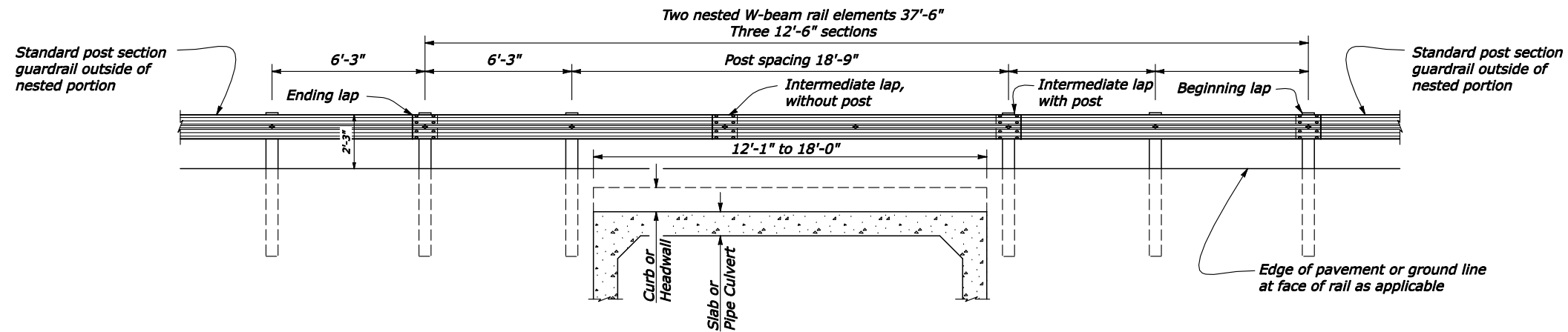


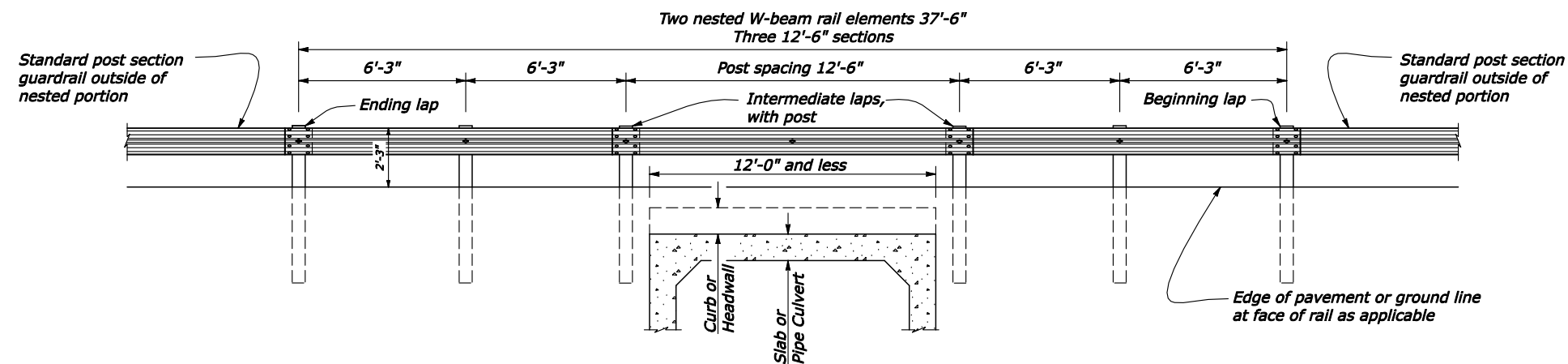
| REG | STATE | PROJECT | SHEET NO. |
|-----|-------|---------------|-----------|
| SE | LA | RRP-LOP 10(2) | |

NOTE:

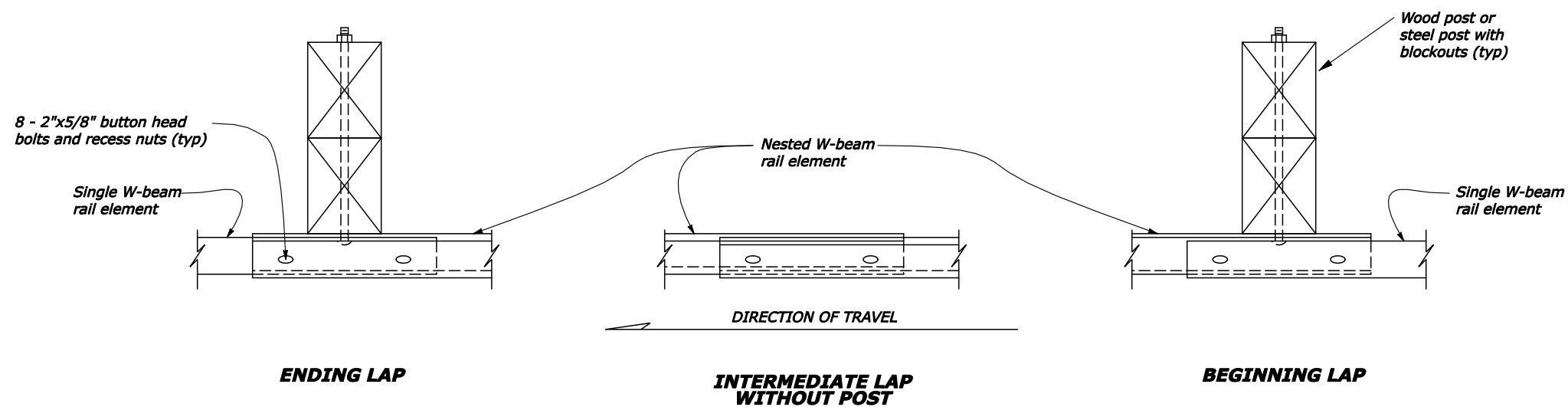
1. 25'-0" rail lengths may be used to eliminate the intermediate lap without a post.



ELEVATION



ELEVATION



NO SCALE

| | |
|---|---------|
| U.S. DEPARTMENT OF TRANSPORTATION FEDERAL HIGHWAY ADMINISTRATION EASTERN FEDERAL LANDS HIGHWAY DIVISION | |
| U.S. CUSTOMARY DETAIL | |
| G4 W BEAM GUARDRAIL PLACEMENT AT MINOR STRUCTURES AND PIPE CULVERTS | |
| DETAIL APPROVED FOR USE | DETAIL |
| REVISED: 03/07 | E617-24 |