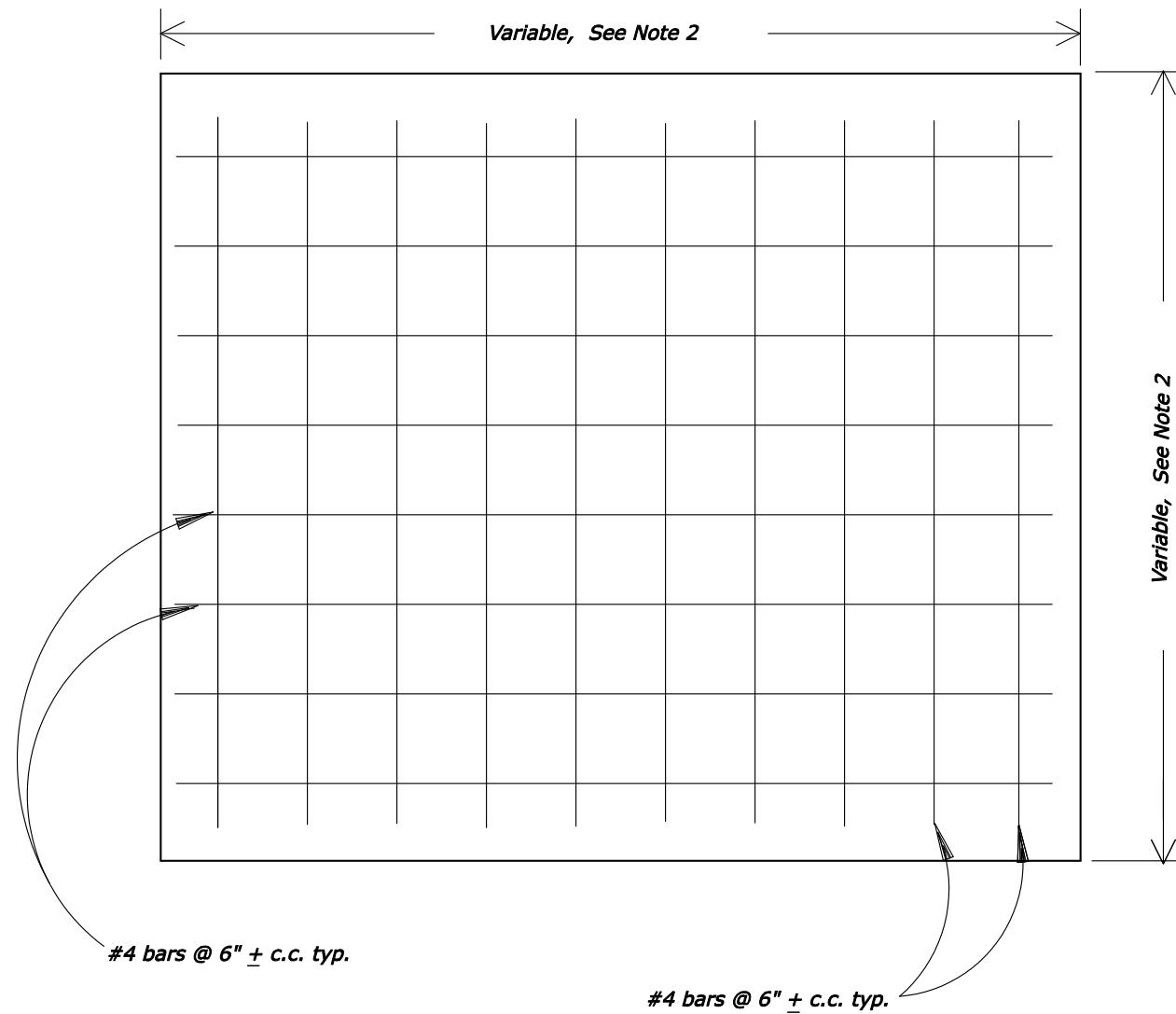
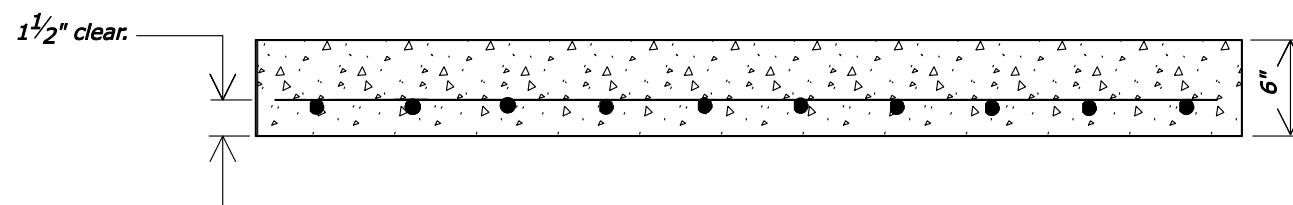


REG	STATE	PROJECT	SHEET NO.



PLAN



SECTION

NOTES:

1. Set concrete cap on a 2" mortar bed.
2. Field measure the length and width of the caps to completely cover the existing inlets.
3. Cut the top of the existing inlets to a depth such that 6 inches remain above the highest existing culvert tying into the inlet.
4. All reinforcing bars are to have a 1 1/2" clearance to the outside face.

NO SCALE

U.S. DEPARTMENT OF TRANSPORTATION FEDERAL HIGHWAY ADMINISTRATION EASTERN FEDERAL LANDS HIGHWAY DIVISION	
U.S. CUSTOMARY DETAIL	
PRECAST CONCRETE INLET CAP	
DETAIL APPROVED FOR USE	DETAIL
REVISED: 1/08	E604-08