

VIEW B

GRATE FRAME

GRATE

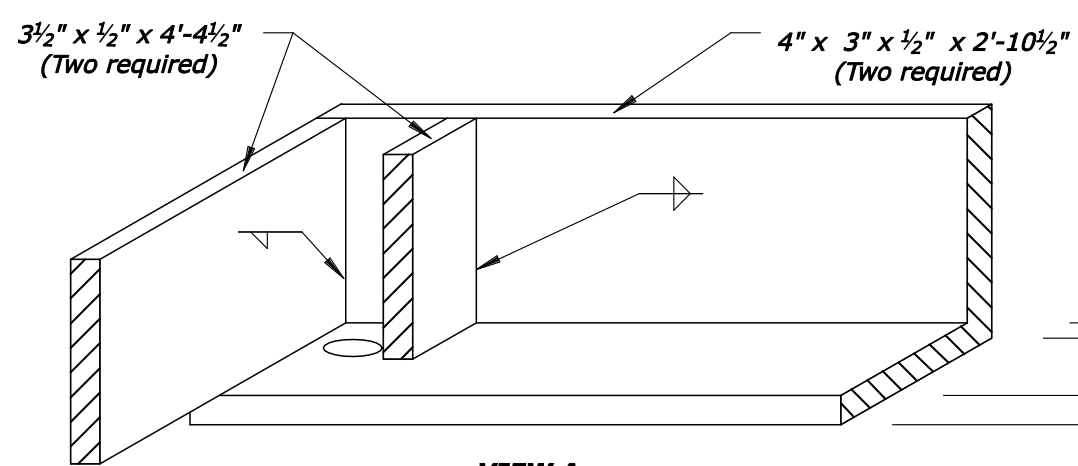
METAL SPACERS

Notes:

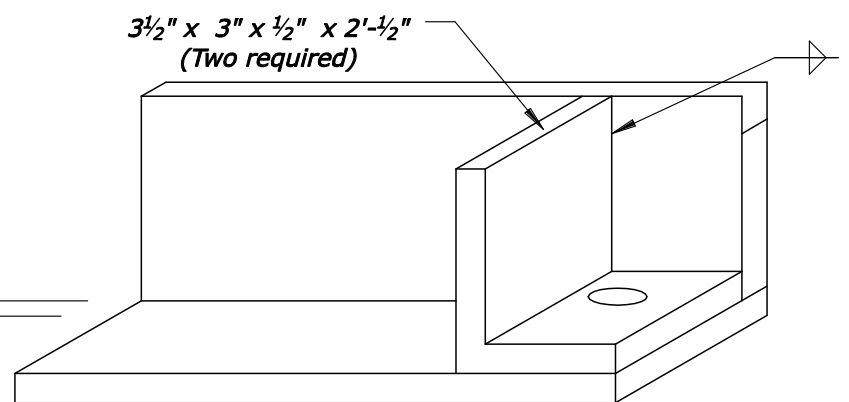
1. Alternate spacers include 5/8" Dia. holes instead of the slot shown, or 2 pieces of 1/2" galvanized iron pipe.
2. Four 1/2" Dia. x 2'-4 1/4" steel rods, two nuts each end rods threaded 2" +/- each end.
3. In place of rods and nuts, bars may be welded together using spacers with 2 extra 1 3/4" outside spacers added to each end.
4. Galvanize all metal parts for frame and grating after fabrication.
5. Frame and grating are steel.

LEGEND

- weld both sides
- ↘ fillet lap weld



VIEW A (OBLIQUE)



VIEW C (OBLIQUE)

NO SCALE

U.S. DEPARTMENT OF TRANSPORTATION FEDERAL HIGHWAY ADMINISTRATION EASTERN FEDERAL LANDS HIGHWAY DIVISION	
U.S. CUSTOMARY DETAIL	
INLET, TYPE 4D	
Sheet 2 of 2	
DETAIL APPROVED FOR USE	DETAIL
REVISED: 3/08	E604-02

3/31/2008 11:44:59 AM Z:\Standard\temp\60402_detail.dgn