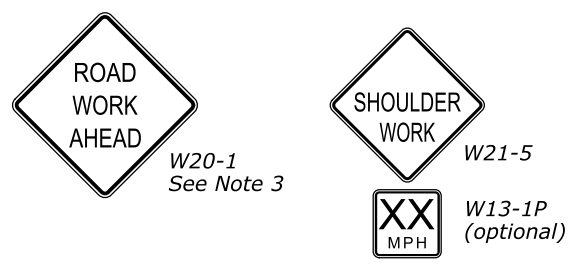
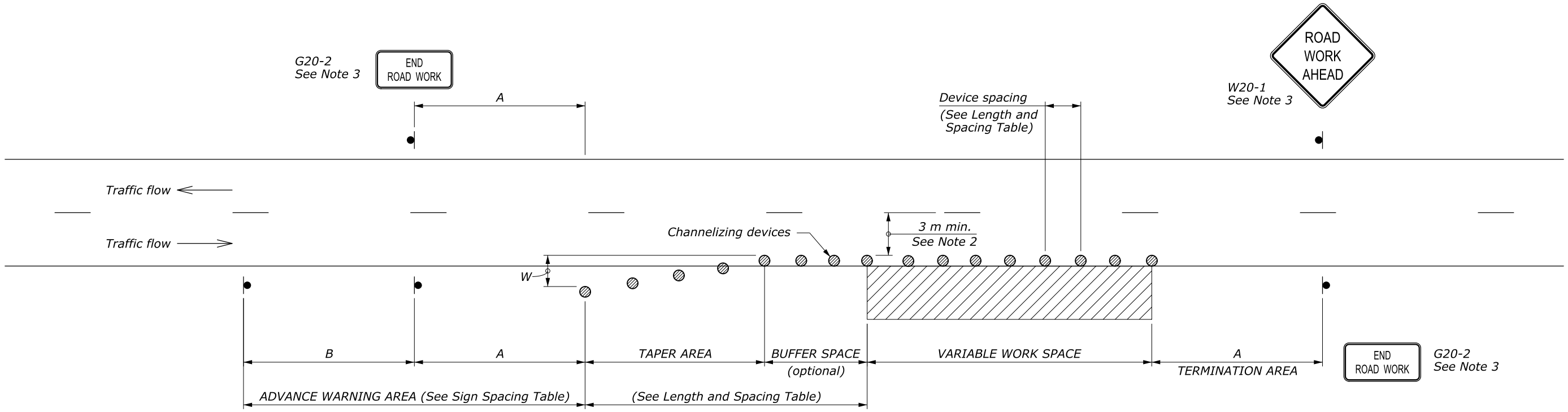


LENGTH AND SPACING TABLE						
APPROACH SPEED*		MINIMUM TAPER LENGTH**	BUFFER SPACE LENGTH	CHANNELIZING DEVICE		
MPH	km/h			TAPER AREA	BUFFER SPACE	WORK SPACE
20	30	Shoulder taper formula: $L = \frac{WS^2}{465}$ for $S < 70$ km/h	35	6	12	12
25	40		45	8	15	15
30	50	$L = \frac{WS}{4.8}$ for $S \geq 70$ km/h	60	9	18	18
35	55		75	11	21	21
40	65		95	12	24	24
45	70	Where: $L =$ Minimum length of taper	110	14	27	27
50	80	$W =$ Width of offset in meters	130	15	30	30
55	90	$S =$ Metric equivalent of posted speed limit or 85 percentile speed prior to work in kilometers per hour	150	17	34	34
60	95		175	18	37	37
65	105		195	20	40	40
70	115		225	21	43	43

SIGN SPACING TABLE			
ROAD TYPE	DISTANCE BETWEEN SIGNS IN METERS		
	A	B	C
Urban and Rural ≤ 50 km/h [≤ 30 MPH]	30	30	30
Urban and Rural 60-80 km/h [35-50 MPH]	100	100	100
Rural greater than 80 km/h [50 MPH]	150	150	150
Expressway / Freeway	300	450	800

- NOTE:**
1. Final location and spacing of signs and devices may be changed to fit field conditions as approved by the CO.
 2. For project specific minimum width, refer to Special Contract Requirements, Section 156.
 3. If shoulder closure is completely within the project limits, eliminate the "ROAD WORK AHEAD" (W20-1) and "END ROAD WORK" (G20-2) signs.
 4. Do not allow equipment, materials, or vehicles to be parked or stored in the buffer space.

* Approach speed based on the regulatory posted speed, not the advisory speed.
 ** Lengthen taper as needed to provide minimum of three channelizing devices in taper at required spacing.



U.S. DEPARTMENT OF TRANSPORTATION
 FEDERAL HIGHWAY ADMINISTRATION
 FEDERAL LANDS HIGHWAY

METRIC STANDARD

**TEMPORARY TRAFFIC CONTROL
 SHOULDER CLOSURE LAYOUT**

STANDARD APPROVED FOR USE 6/2005

REVISOR: 9/2010

STANDARD M635-10

NO SCALE