

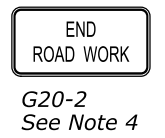
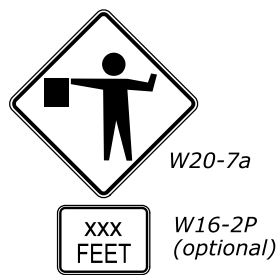
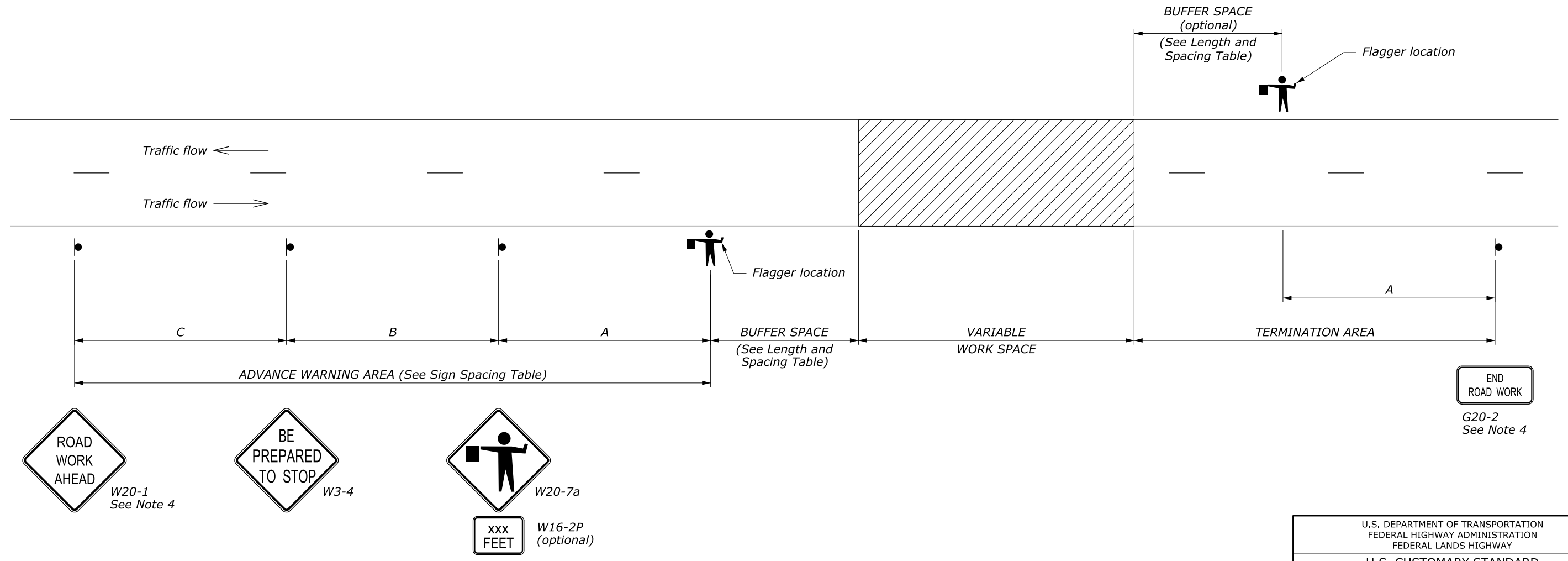
| APPROACH SPEED* | BUFFER SPACE LENGTH |
|-----------------|---------------------|
| MPH             | FEET                |
| 20              | 115                 |
| 25              | 155                 |
| 30              | 200                 |
| 35              | 250                 |
| 40              | 305                 |
| 45              | 360                 |
| 50              | 425                 |
| 55              | 495                 |
| 60              | 570                 |
| 65              | 645                 |
| 70              | 730                 |

\* Approach speed based on the regulatory posted speed, not the advisory speed.

| ROAD TYPE                        | DISTANCE BETWEEN SIGNS IN FEET |      |      |
|----------------------------------|--------------------------------|------|------|
|                                  | A                              | B    | C    |
| Urban and Rural 30 MPH and less  | 100                            | 100  | 100  |
| Urban and Rural 35 MPH to 50 MPH | 350                            | 350  | 350  |
| Rural greater than 50 MPH        | 500                            | 500  | 500  |
| Expressway / Freeway             | 1000                           | 1500 | 2640 |

**NOTE:**

1. Signs are shown for one direction of travel only. Place devices similar to those depicted for the opposite direction of travel.
2. Final location and spacing of signs and devices may be changed to fit field conditions as approved by the CO.
3. For pilot car operation, mount the "PILOT CAR FOLLOW ME" (G20-4) sign at a conspicuous location on the rear of vehicle. Prominently display the name of the Contractor on the pilot car.
4. If closure is completely within the project limits, eliminate the "ROAD WORK AHEAD" (W20-1) and "END ROAD WORK" (G20-2) signs.
5. For night time flagging operation, provide floodlighting at flagger stations.
6. Do not allow equipment, materials, or vehicles to be parked or stored in the buffer space.



NO SCALE

|   |          |
|---|----------|
| U.S. DEPARTMENT OF TRANSPORTATION<br>FEDERAL HIGHWAY ADMINISTRATION<br>FEDERAL LANDS HIGHWAY            |          |
| U.S. CUSTOMARY STANDARD<br><b>TEMPORARY TRAFFIC CONTROL<br/>ROAD CLOSURE LAYOUT<br/>(WITH FLAGGERS)</b> |          |
| STANDARD APPROVED FOR USE 6/2005  | STANDARD |
| REVISED:<br>DRAFT: 9/2010   | 635-5    |