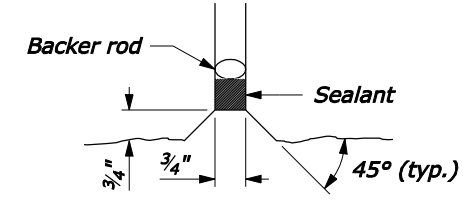
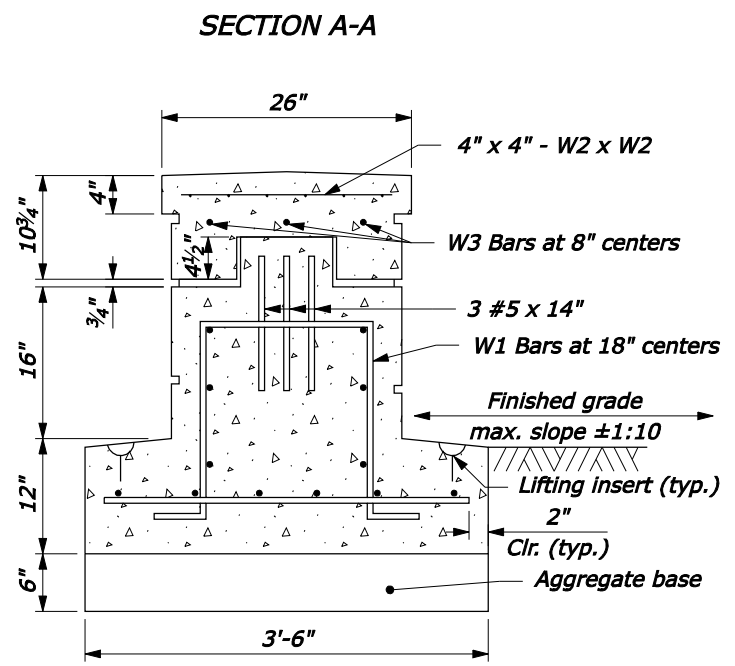
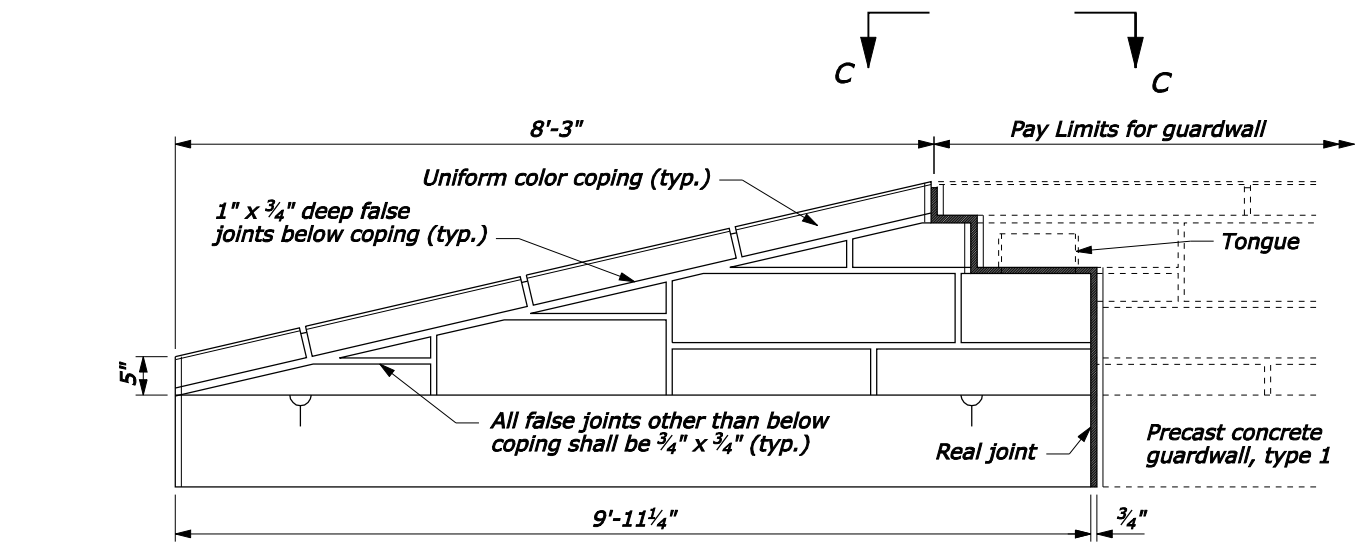
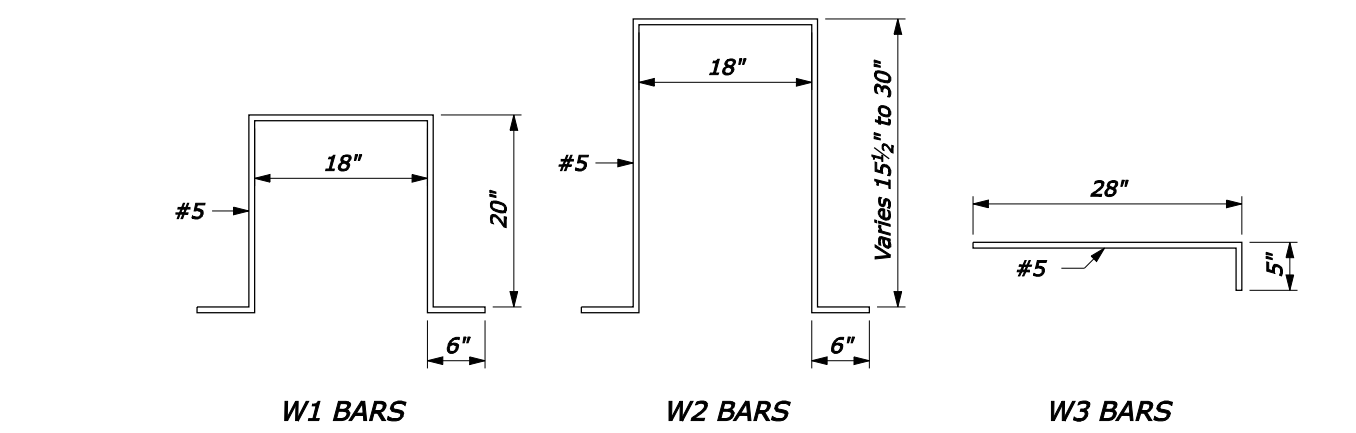


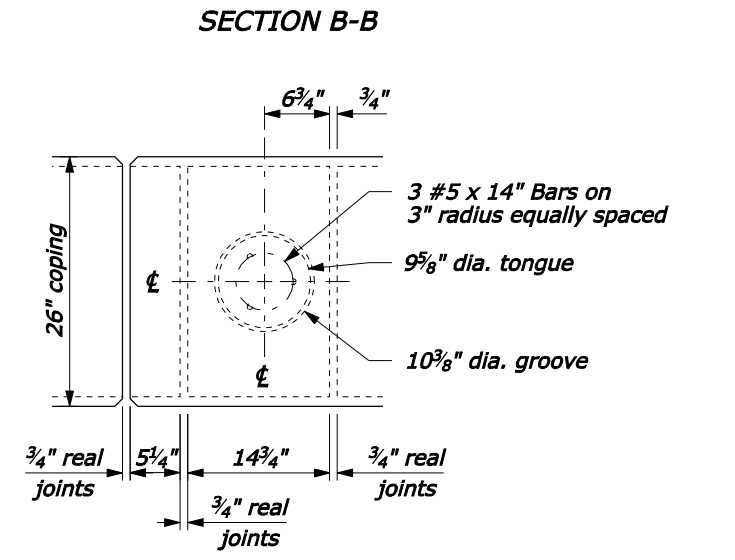
- NOTE:**
1. Terminal sections, Type A and Type B, are to interlock with any of the precast concrete guardwall segments.
  2. Sealant for the real joint covers the perimeter joint of the capstone, sides, and top and sides of the footing.
  3. Precast the entire wall section, no cast-in-place is allowed.
  4. Minimum concrete cover 2" unless shown otherwise.
  5. Ensure guardwall terminal section is outside the clear zone by using appropriate flare rate in guardwall layout (see Standard 618-2) and as directed by CO.



**TERMINAL SECTIONS**



**BENDING DIAGRAMS**



**SECTION C-C**

**REAL JOINTS DETAIL**

NO SCALE

U.S. DEPARTMENT OF TRANSPORTATION  
 FEDERAL HIGHWAY ADMINISTRATION  
 FEDERAL LANDS HIGHWAY

U.S. CUSTOMARY STANDARD  
**PRECAST CONCRETE  
 GUARDWALL, TYPE 1,  
 TERMINAL SECTIONS,  
 TYPE A AND B**

STANDARD APPROVED FOR USE 3/1990  
 REVISED: 4/1994 6/2005

STANDARD  
**618-3**

05-Nov-2007 09:53 AM P:\198.145.186.2\std. plan\std1803.dgn [US Customary]