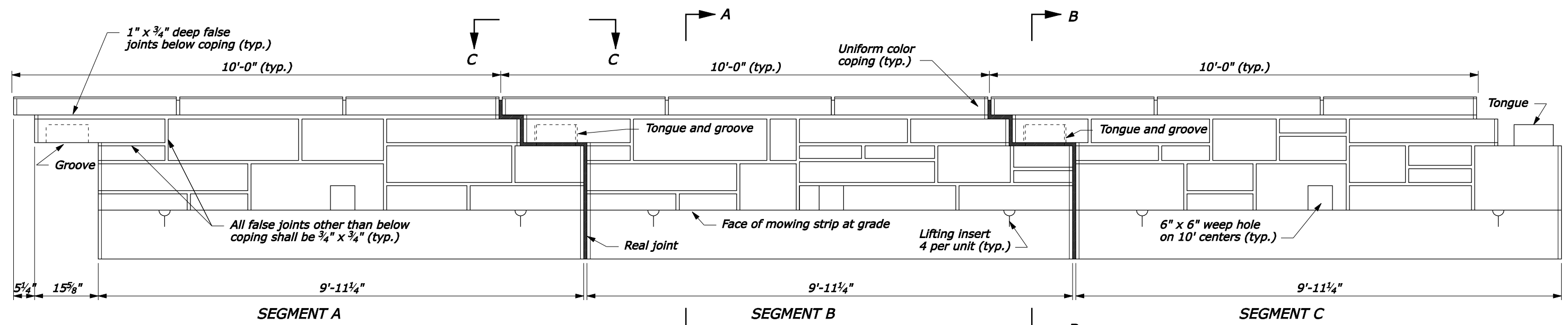


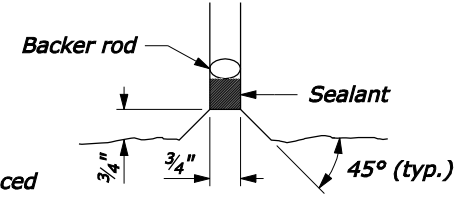
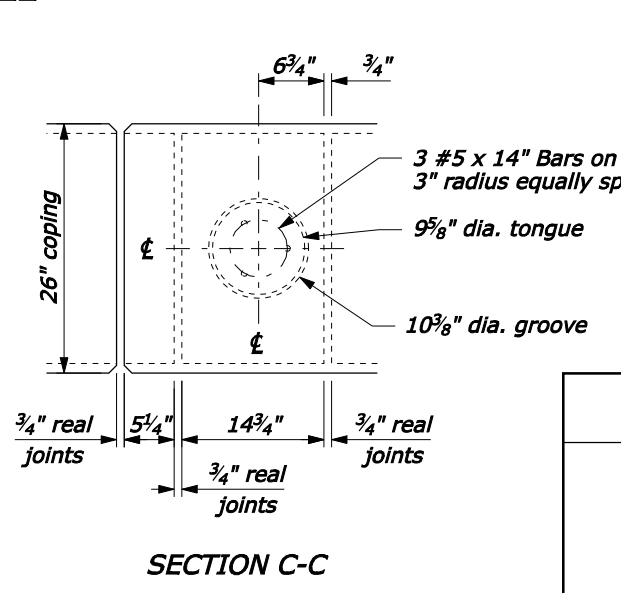
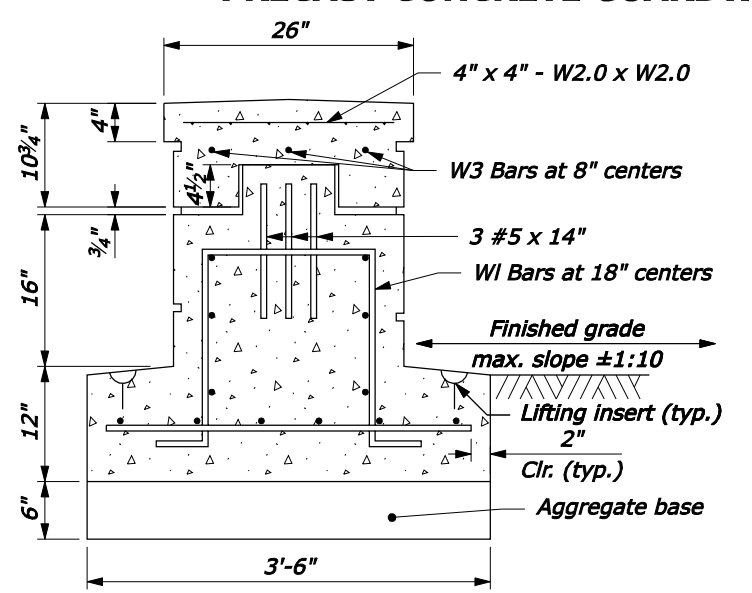
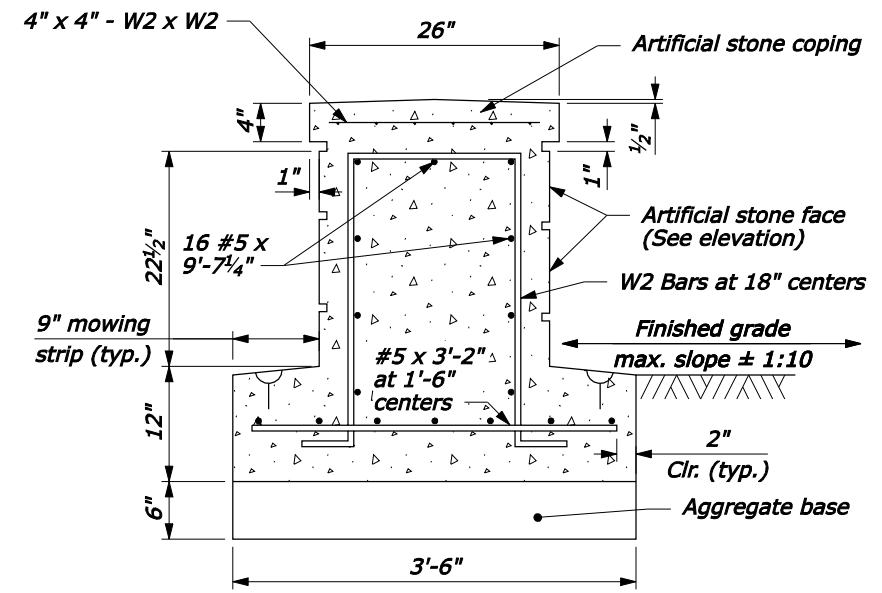
Design Speed (mph)	Shy line offset (ft)	Flare rate inside shy line (a:b)	Flare rate outside shy line (a:b)
60	8.0	26:1	14:1
50	6.5	21:1	11:1
40	4.5	16:1	8:1
30 and less	3.5	13:1	7:1

- NOTE:**
- Each unit consists of three segments each of which have a different random masonry pattern as shown. All three segments are to interlock with each other to vary the order.
 - Sealant for the real joint covers the perimeter joint of the capstone, sides, and top and sides of the footing.
 - Precast the entire wall section, no cast-in-place is allowed.
 - Minimum concrete cover 2" unless shown otherwise.

BENDING DIAGRAMS



PRECAST CONCRETE GUARDWALL



U.S. DEPARTMENT OF TRANSPORTATION
 FEDERAL HIGHWAY ADMINISTRATION
 FEDERAL LANDS HIGHWAY

U.S. CUSTOMARY STANDARD

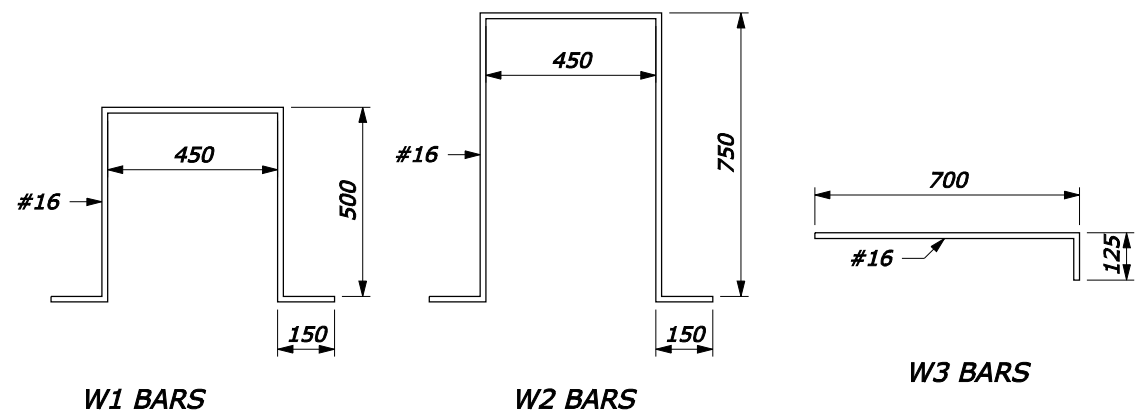
PRECAST CONCRETE GUARDWALL, TYPE 1

STANDARD APPROVED FOR USE 3/1990
 REVISED: 4/1994 6/2005

STANDARD 618-2

05-Nov-2007 09:21 AM
 Rpt://198.145.186.2/std.plt/1981802.dgn [US Customary]

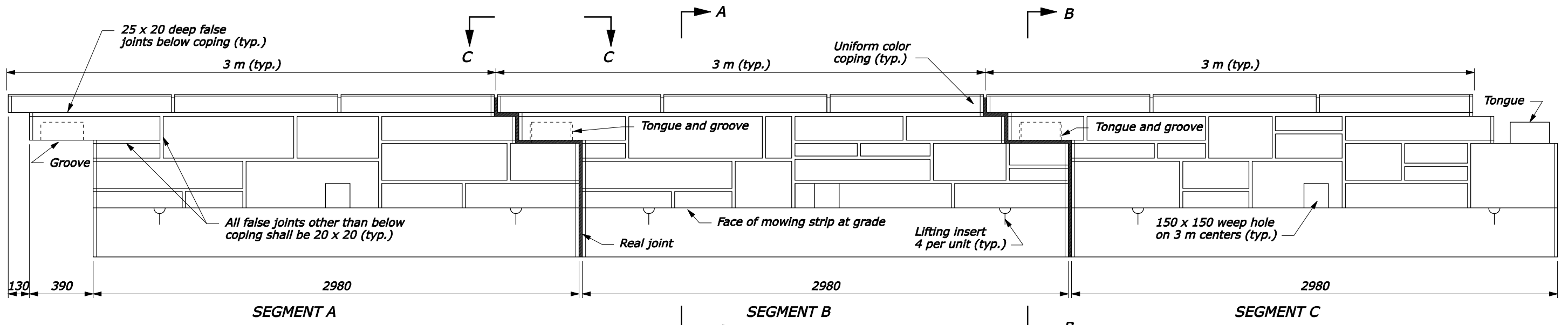
NO SCALE



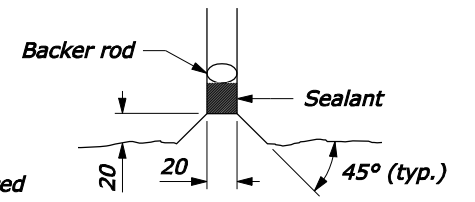
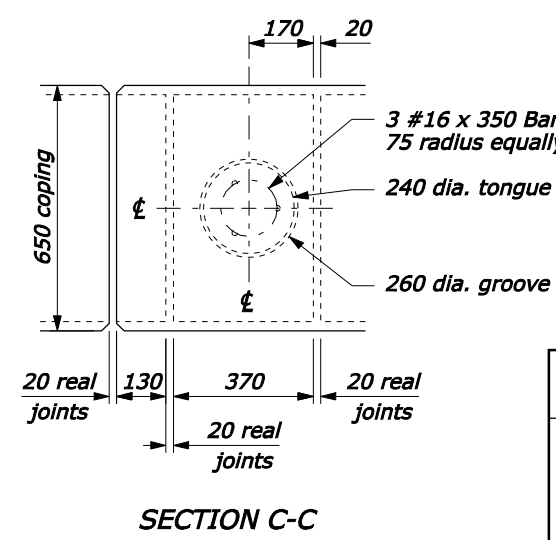
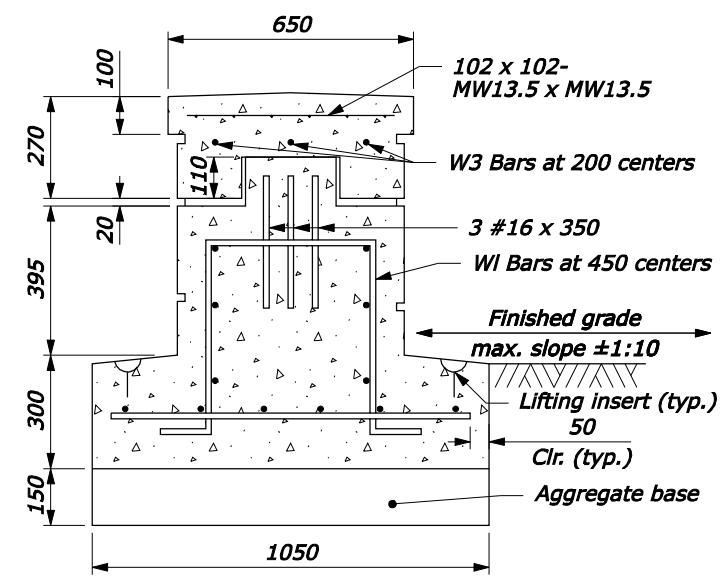
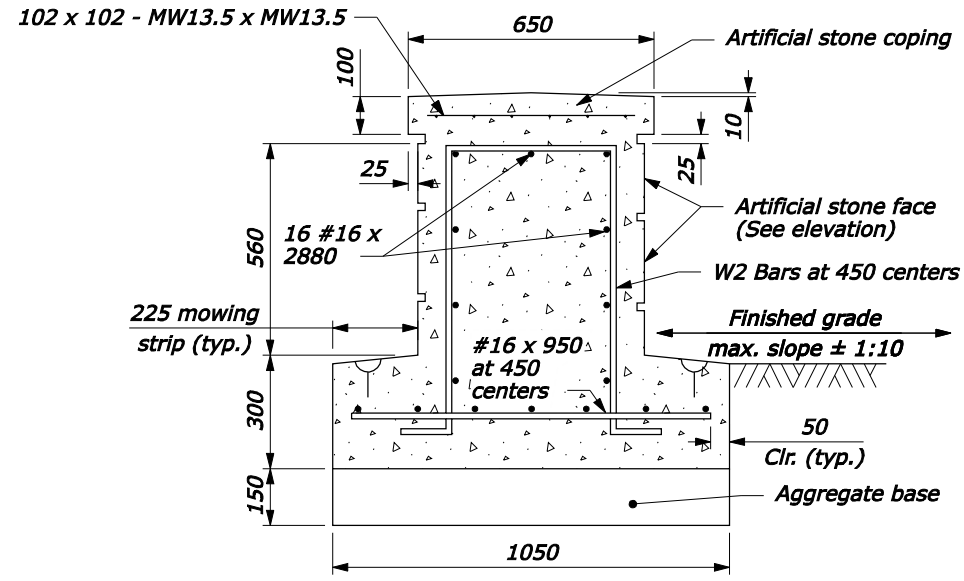
Design Speed (km/h)	Shy line offset (m)	Flare rate inside shy line (a:b)	Flare rate outside shy line (a:b)
100	2.4	26:1	14:1
80	2.0	21:1	11:1
60	1.4	16:1	8:1
50 or less	1.0	13:1	7:1

- NOTE:**
- Each unit consists of three segments each of which have a different random masonry pattern as shown. All three segments are to interlock with each other to vary the order.
 - Sealant for the real joint covers the perimeter joint of the capstone, sides, and top and sides of the footing.
 - Precast the entire wall section, no cast-in-place is allowed.
 - Minimum concrete cover 50 mm unless shown otherwise.
 - Dimensions not labeled are in millimeters.

BENDING DIAGRAMS



PRECAST CONCRETE GUARDWALL



U.S. DEPARTMENT OF TRANSPORTATION
FEDERAL HIGHWAY ADMINISTRATION
FEDERAL LANDS HIGHWAY
METRIC STANDARD

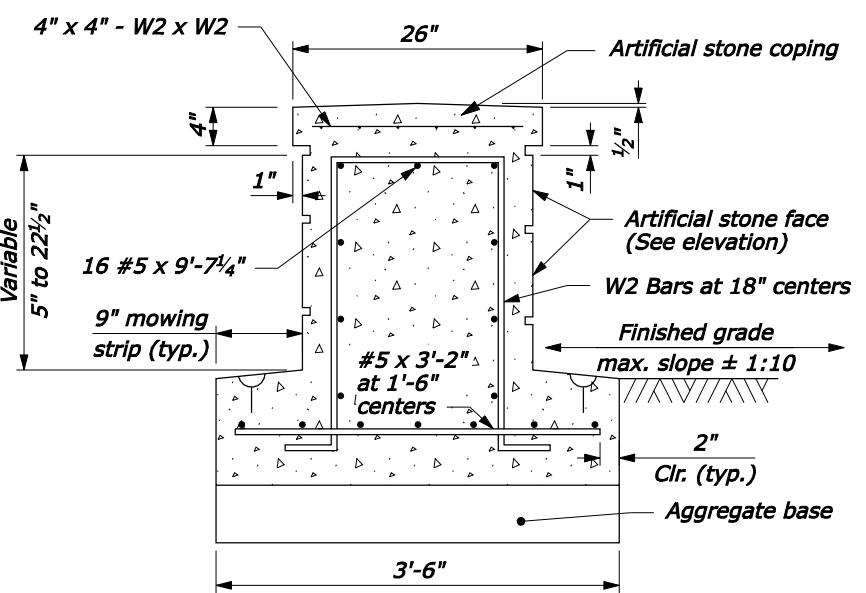
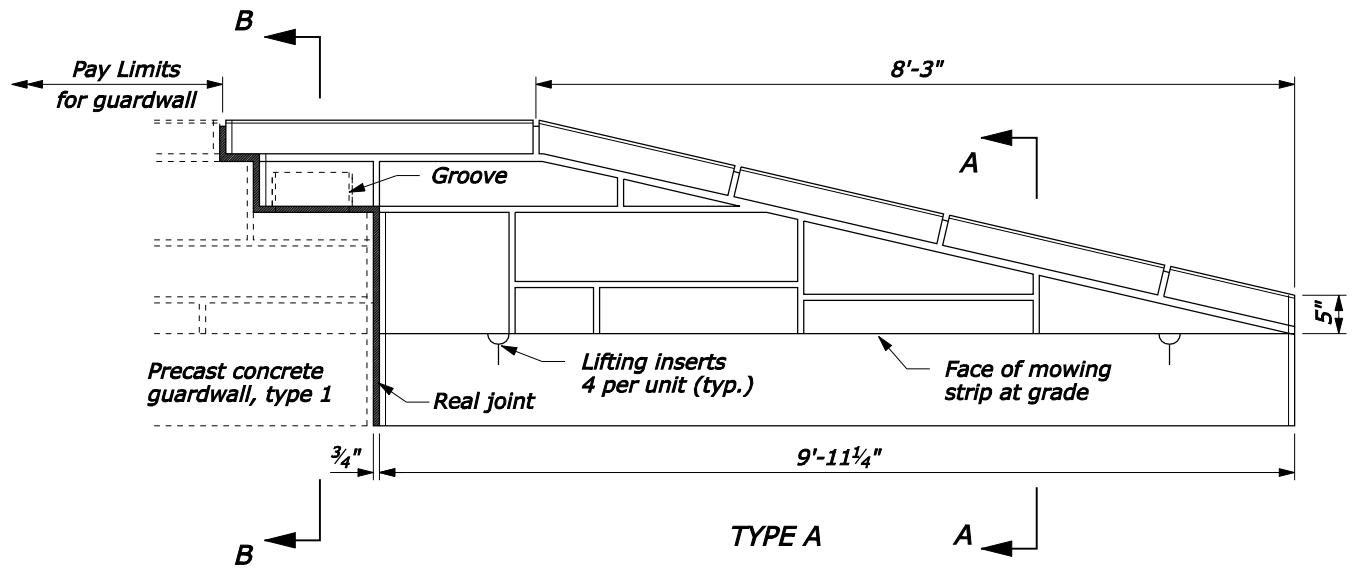
PRECAST CONCRETE GUARDWALL, TYPE 1

STANDARD APPROVED FOR USE 3/1996
REVISED: 6/1997 6/2005

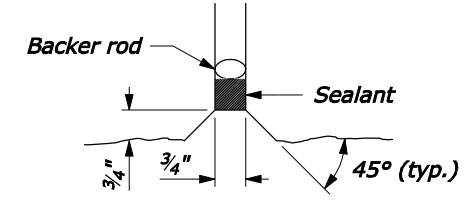
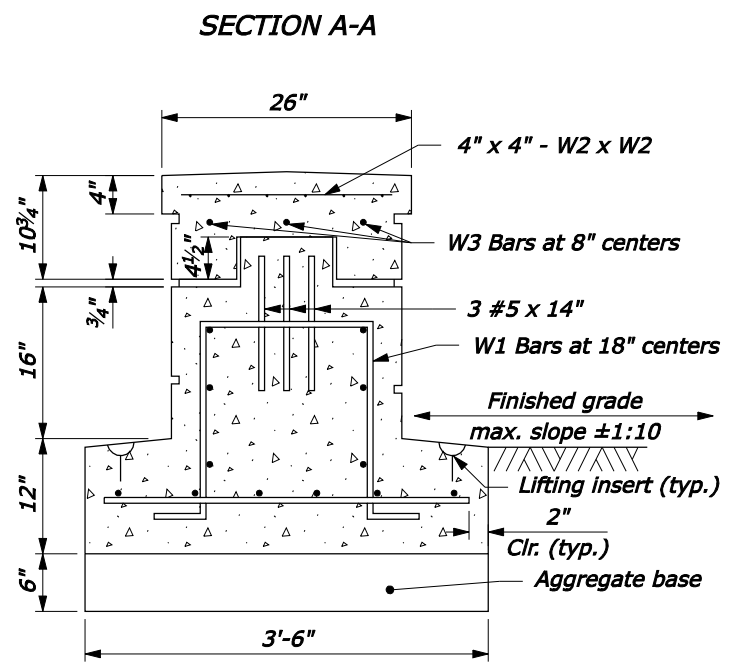
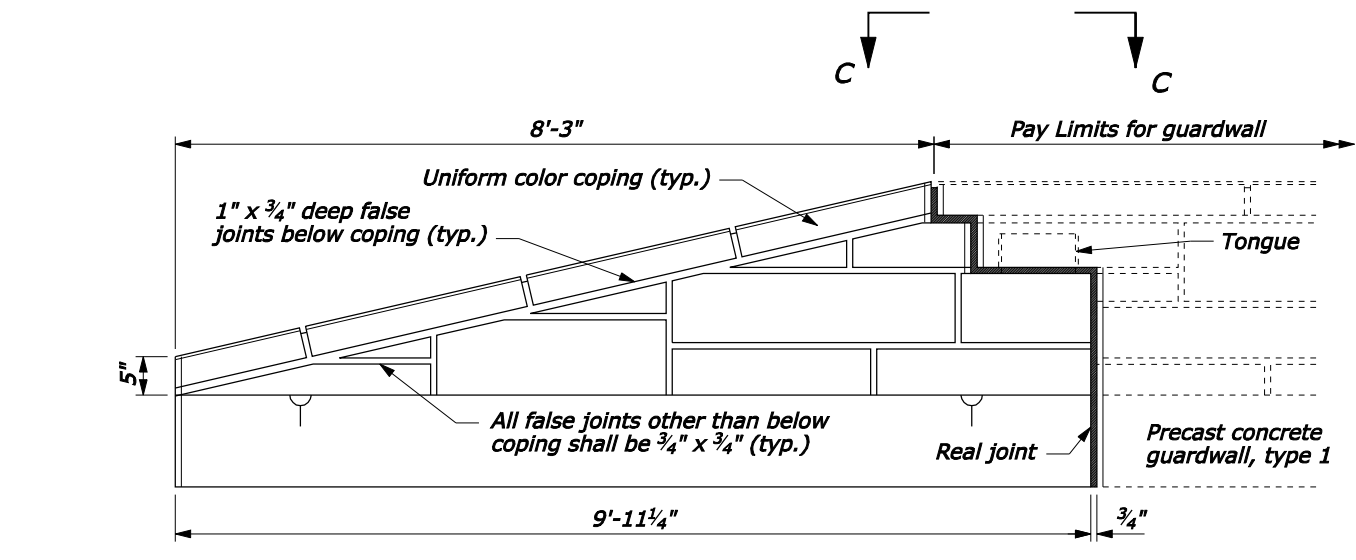
STANDARD M618-2

NO SCALE

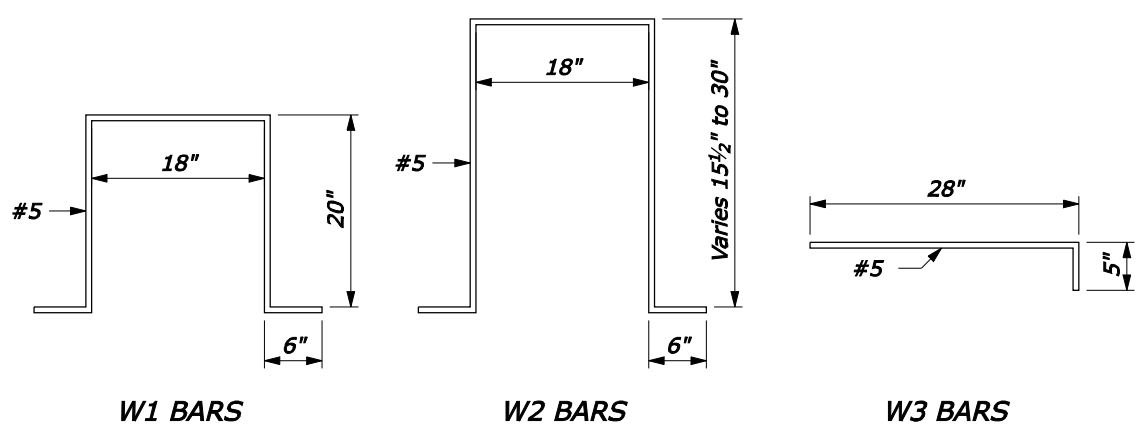
05-Nov-2007 09:20 AM
fp://198.145.188.2/scd_plan/161802.dgn [Metric]



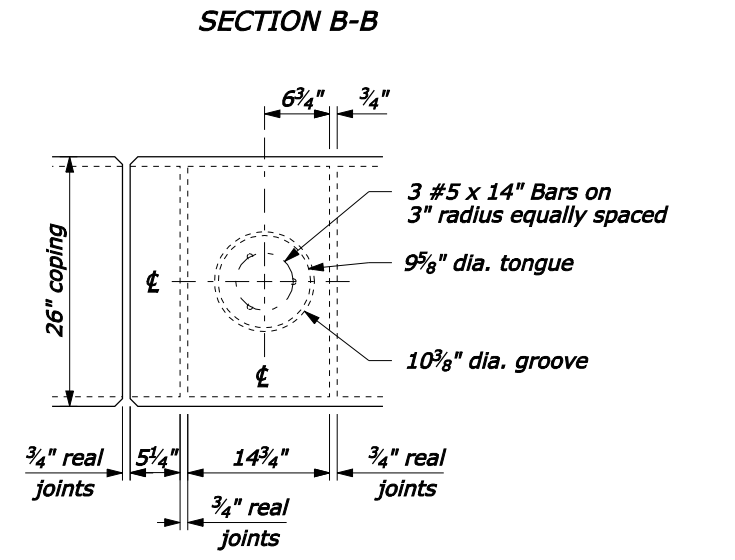
- NOTE:**
- Terminal sections, Type A and Type B, are to interlock with any of the precast concrete guardwall segments.
 - Sealant for the real joint covers the perimeter joint of the capstone, sides, and top and sides of the footing.
 - Precast the entire wall section, no cast-in-place is allowed.
 - Minimum concrete cover 2" unless shown otherwise.
 - Ensure guardwall terminal section is outside the clear zone by using appropriate flare rate in guardwall layout (see Standard 618-2) and as directed by CO.



TERMINAL SECTIONS



BENDING DIAGRAMS



SECTION C-C

NO SCALE

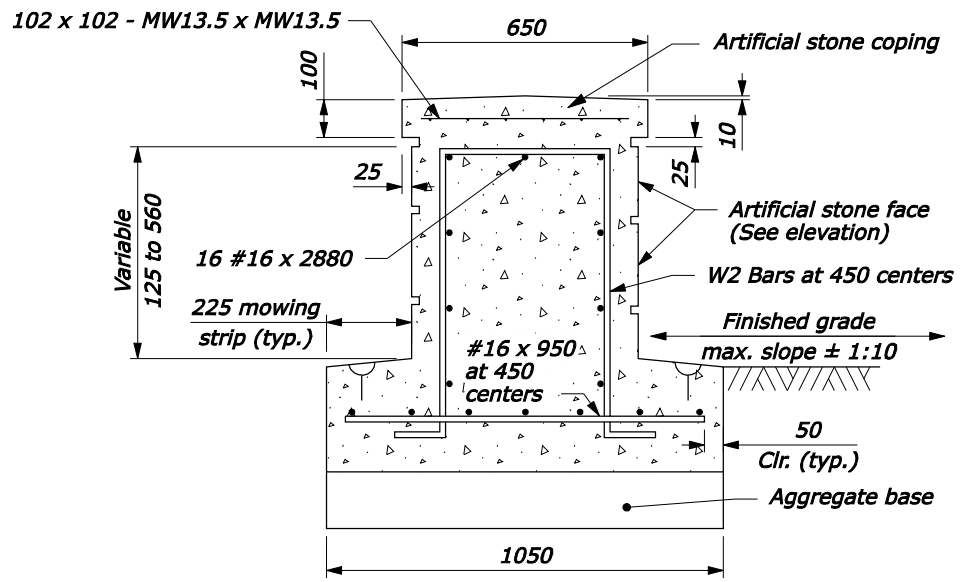
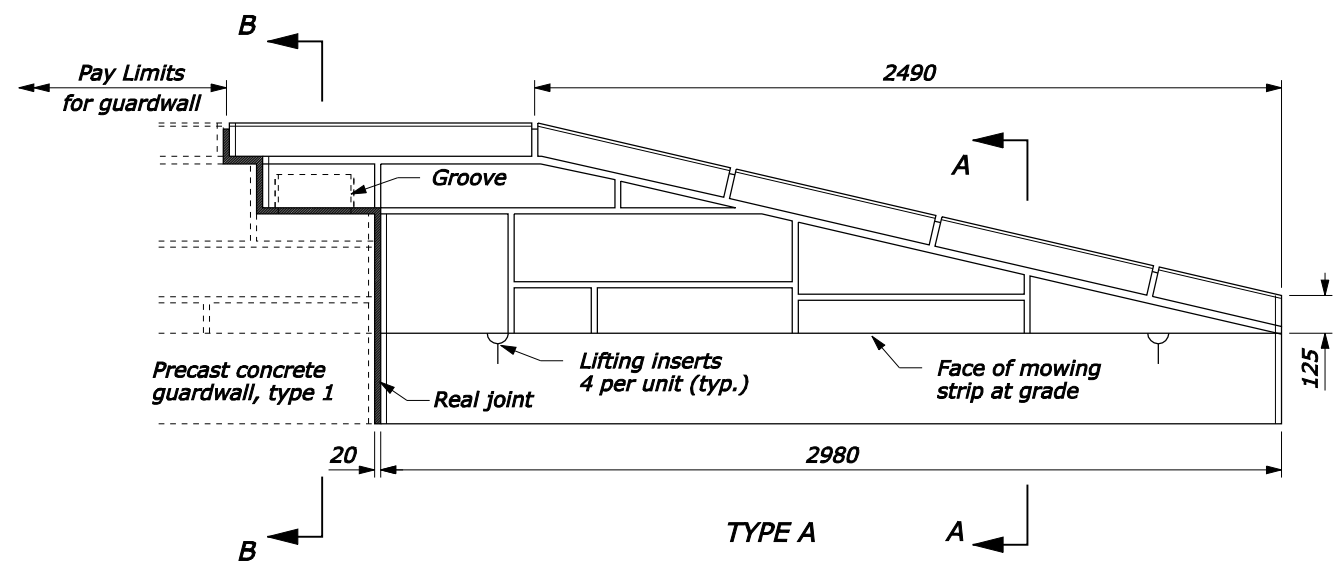
U.S. DEPARTMENT OF TRANSPORTATION
 FEDERAL HIGHWAY ADMINISTRATION
 FEDERAL LANDS HIGHWAY

U.S. CUSTOMARY STANDARD
**PRECAST CONCRETE
 GUARDWALL, TYPE 1,
 TERMINAL SECTIONS,
 TYPE A AND B**

STANDARD APPROVED FOR USE 3/1990
 REVISED: 4/1994 6/2005

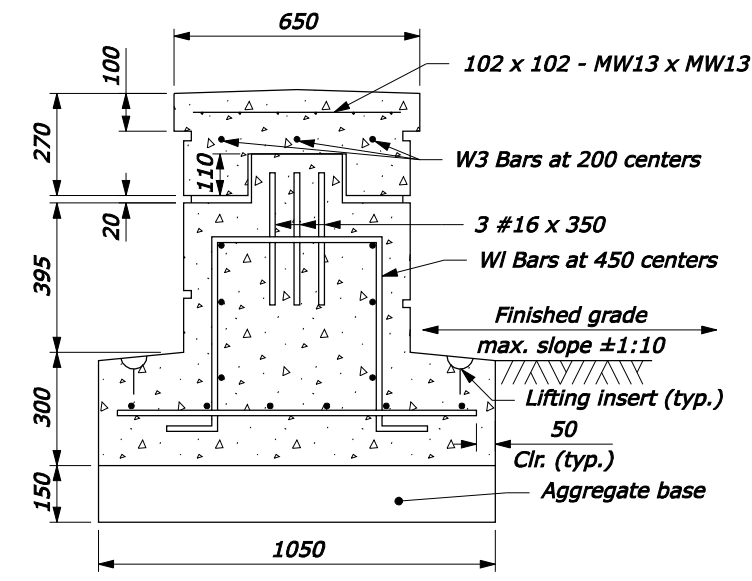
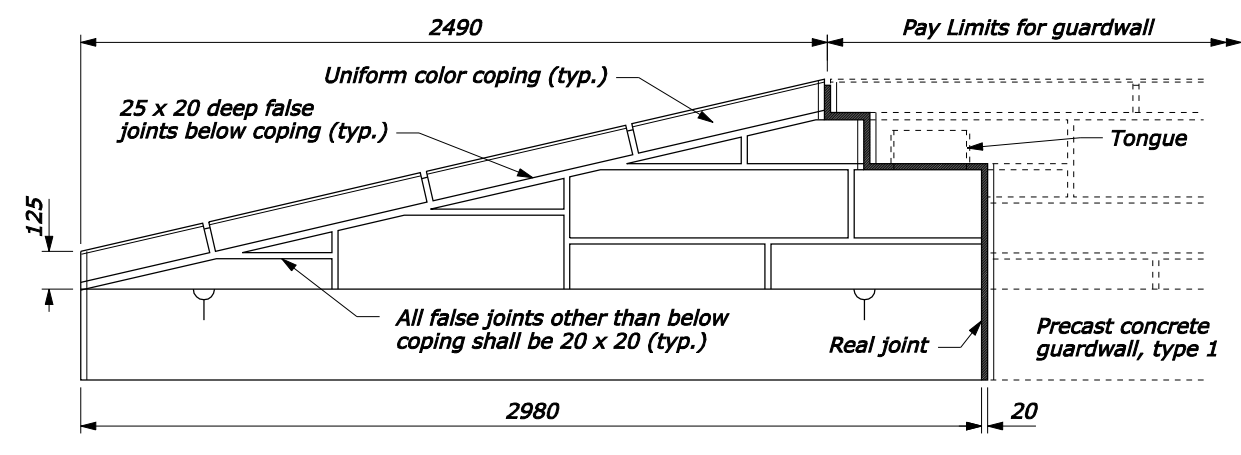
STANDARD
618-3

05-Nov-2007 09:53 AM
 P:\198.145.186.2\std.pln\std61803.dgn [US Customary]

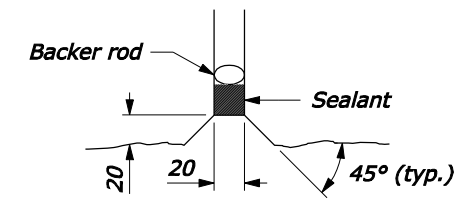


- NOTE:**
1. Terminal sections, Type A and Type B, are to interlock with any of the precast concrete guardwall segments.
 2. Sealant for the real joint covers the perimeter joint of the capstone, sides, and top and sides of the footing.
 3. Precast the entire wall section, no cast-in-place is allowed.
 4. Minimum concrete cover 50 mm unless shown otherwise.
 5. Ensure guardwall terminal section is outside the clear zone by using appropriate flare rate in guardwall layout (see Standard M618-2) and as directed by CO.
 6. Dimensions without units are millimeters.

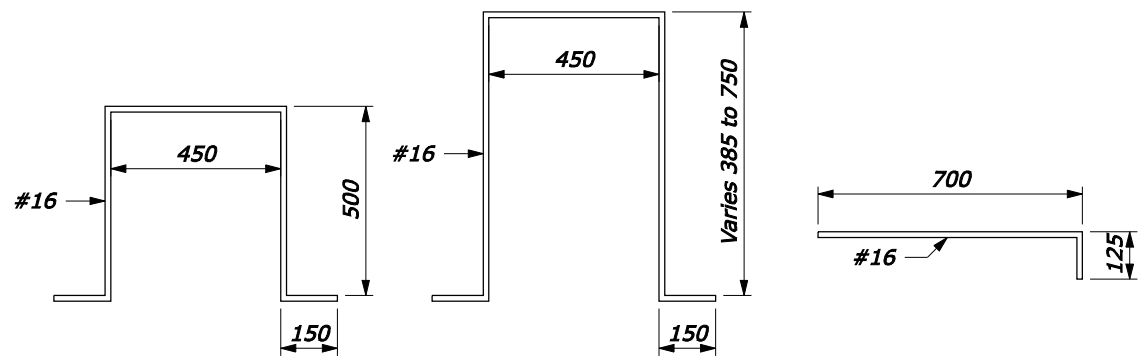
SECTION A-A



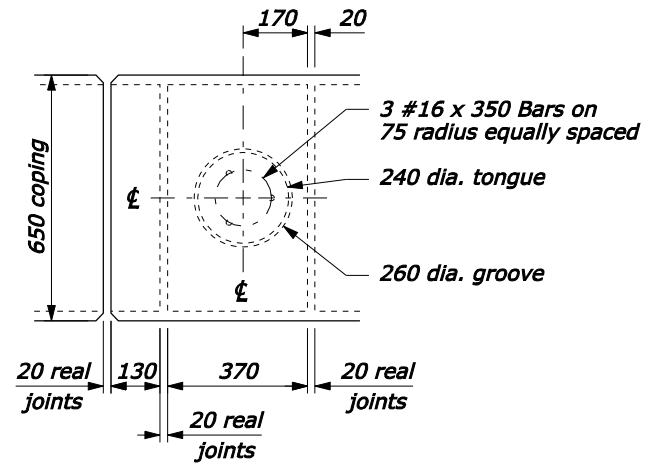
SECTION B-B



REAL JOINTS DETAIL



BENDING DIAGRAMS



SECTION C-C

NO SCALE

U.S. DEPARTMENT OF TRANSPORTATION
 FEDERAL HIGHWAY ADMINISTRATION
 FEDERAL LANDS HIGHWAY

METRIC STANDARD
**PRECAST CONCRETE
 GUARDWALL, TYPE 1,
 TERMINAL SECTIONS,
 TYPE A AND B**

STANDARD APPROVED FOR USE 3/1996
 REVISED: 5/1997 6/2005

STANDARD
M618-3

05-Nov-2007 09:50 AM
 fpp://196.145.188.2/scd_plan/s61803.dgn [Metric]