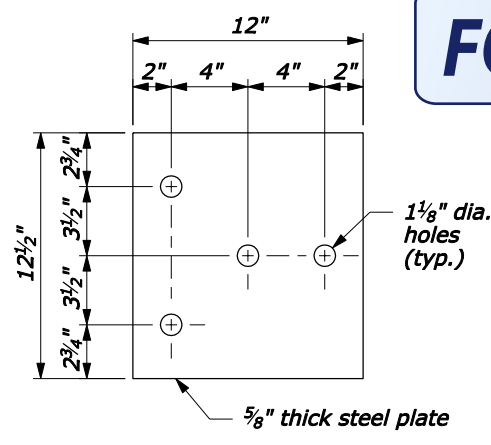
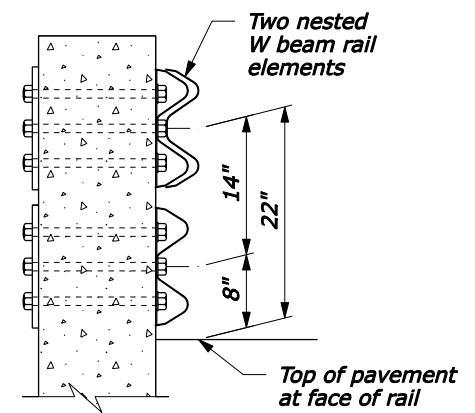


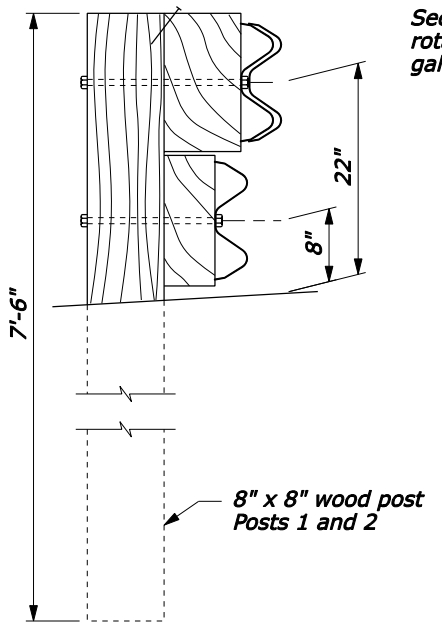
FOR COMMENT



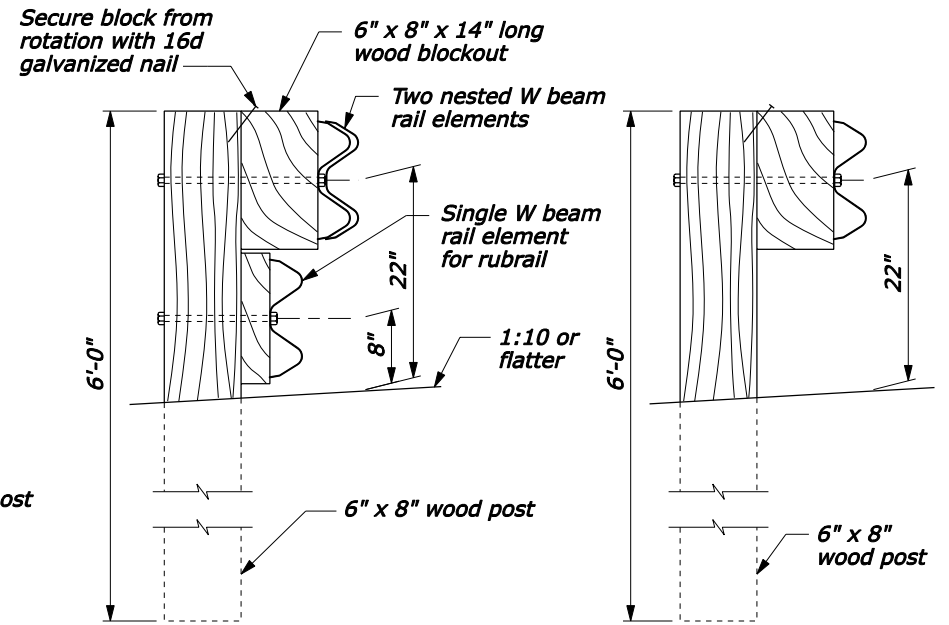
BEARING PLATE



SECTION A-A



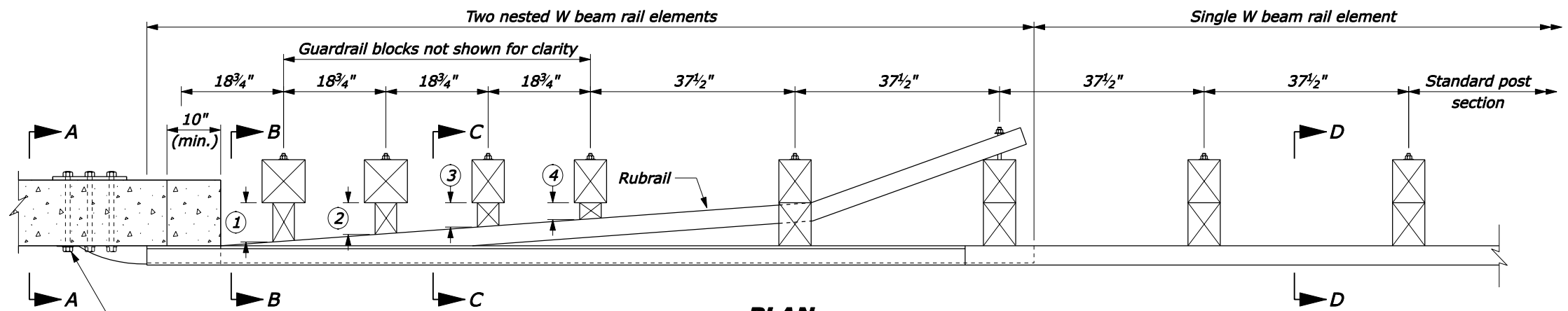
SECTION B-B



SECTION C-C

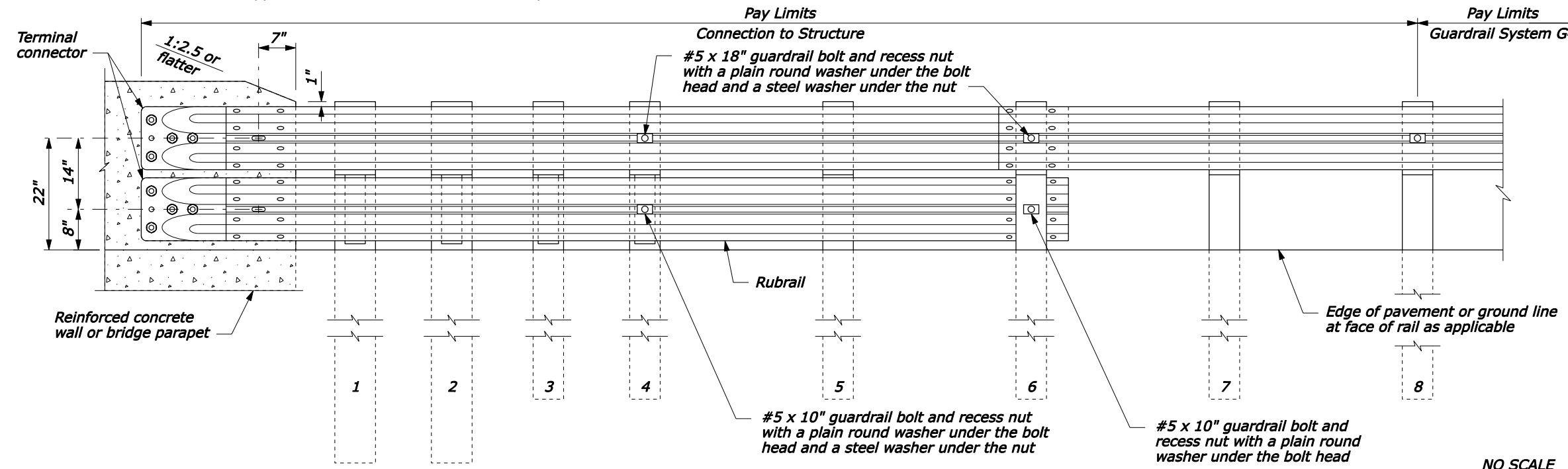
SECTION D-D

- NOTE:**
- The rubrail may be shop bent in the last 37 1/2" to facilitate installation.
 - CENTER drill wood blocks for rubrail located on posts 1 through 4. Secure blocks to post 1 through 3 with M16 carriage bolts.
 - Posts 1, 2, 3, 4 and 6 require an additional hole to attach lower wood blocks and/or the rubrail.
 - Do not bolt nested W beam or rubrail W beam to posts and blocks on posts 1, 2, 3 and 5. Bolt blocks directly to posts.
 - Reinforced concrete wall or bridge parapet must be capable of developing a 59.6 kip pull out strength.



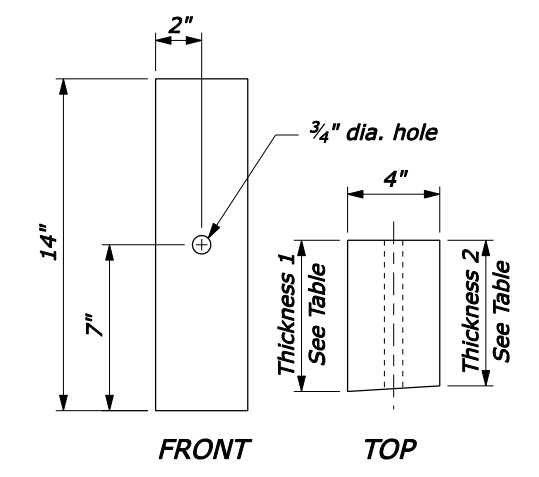
PLAN

WOOD BLOCKS FOR RUBRAIL		
POST	THICKNESS 1	THICKNESS 2
①	6 1/2"	6 1/4"
②	5 3/8"	5"
③	4"	3 5/8"
④	2 5/8"	2 7/16"
⑤	NO BLOCK	NO BLOCK



ELEVATION

NO SCALE



WOOD BLOCK FOR RUBRAIL

U.S. DEPARTMENT OF TRANSPORTATION
FEDERAL HIGHWAY ADMINISTRATION
FEDERAL LANDS HIGHWAY

U.S. CUSTOMARY STANDARD
G4 W-BEAM GUARDRAIL CONNECTION TO VERTICAL FACE STRUCTURE WOOD POSTS

STANDARD APPROVED FOR USE --/----

REVISID: DRAFT: 5/2005

STANDARD 617-25

F:\StdDraw\Draft\18161725.dgn [US Customary] 5/2/2005