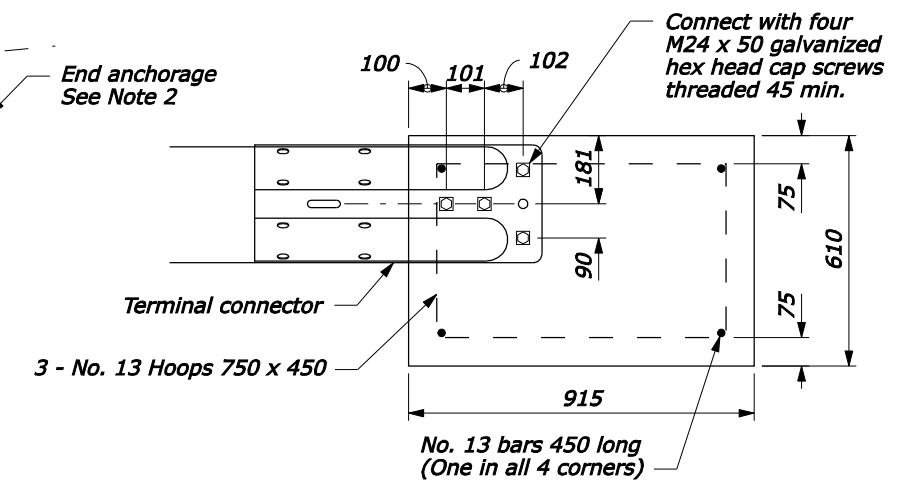
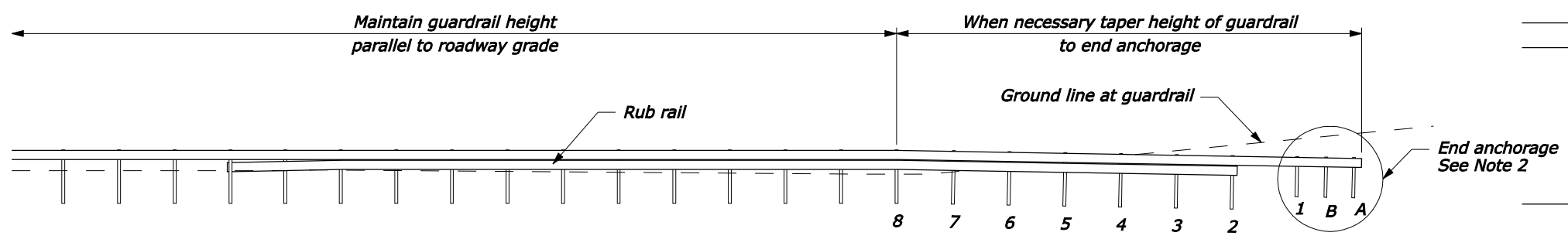
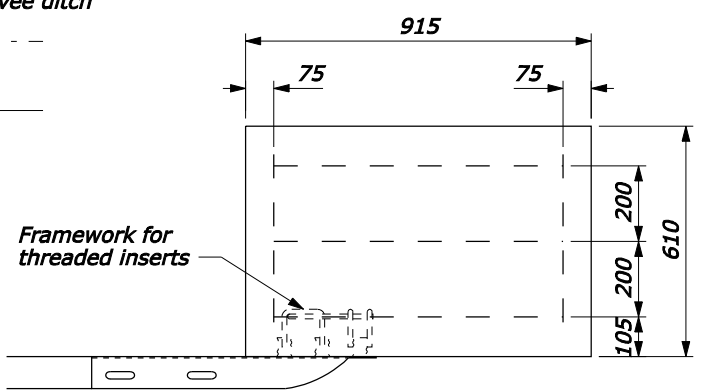


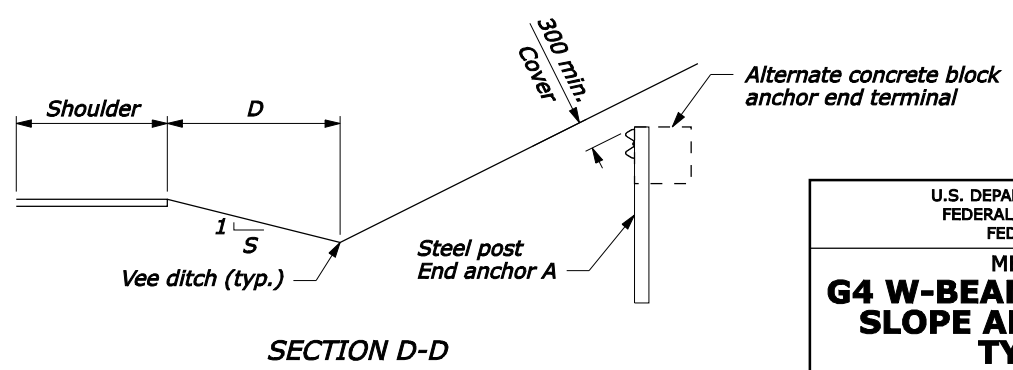
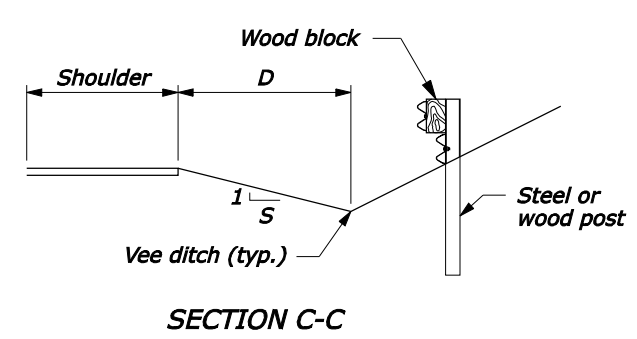
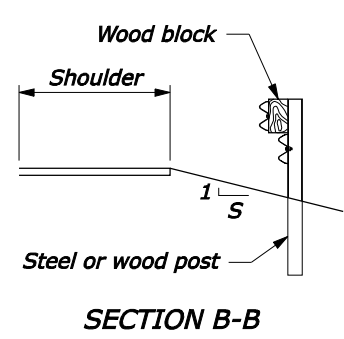
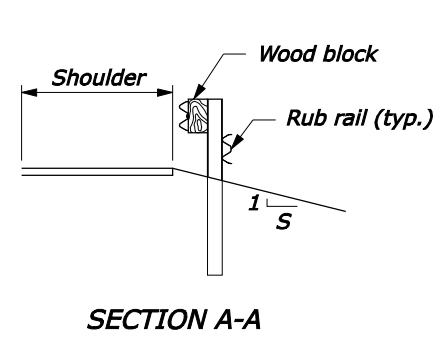
- NOTE:**
1. See sheet 2 of 2 for post and block details.
 2. When alternate concrete block anchor end terminal is used, remove Posts A and B.
 3. Add rub rail when clearance between bottom of rail and ground surface exceeds 445 mm.
 4. Dimensions without units are millimeters.



GUARDRAIL FLARE		
DESIGN SPEED km/h	F	
	S = 4	S = 6
110	13	15
100	13	13
90	13	12
80	13	11
70	13	10
60	13	9
≤ 50	13	7

CROSS SECTION DIMENSIONS	
DITCH SLOPE (S)	DITCH WIDTH (D)
4	1830
6	2700

POST OFFSETS FROM VEE DITCH	
POST	DISTANCE
A	2400
#2	1500
#4	900
#8	0



ALTERNATE CONCRETE BLOCK ANCHOR

U.S. DEPARTMENT OF TRANSPORTATION
 FEDERAL HIGHWAY ADMINISTRATION
 FEDERAL LANDS HIGHWAY

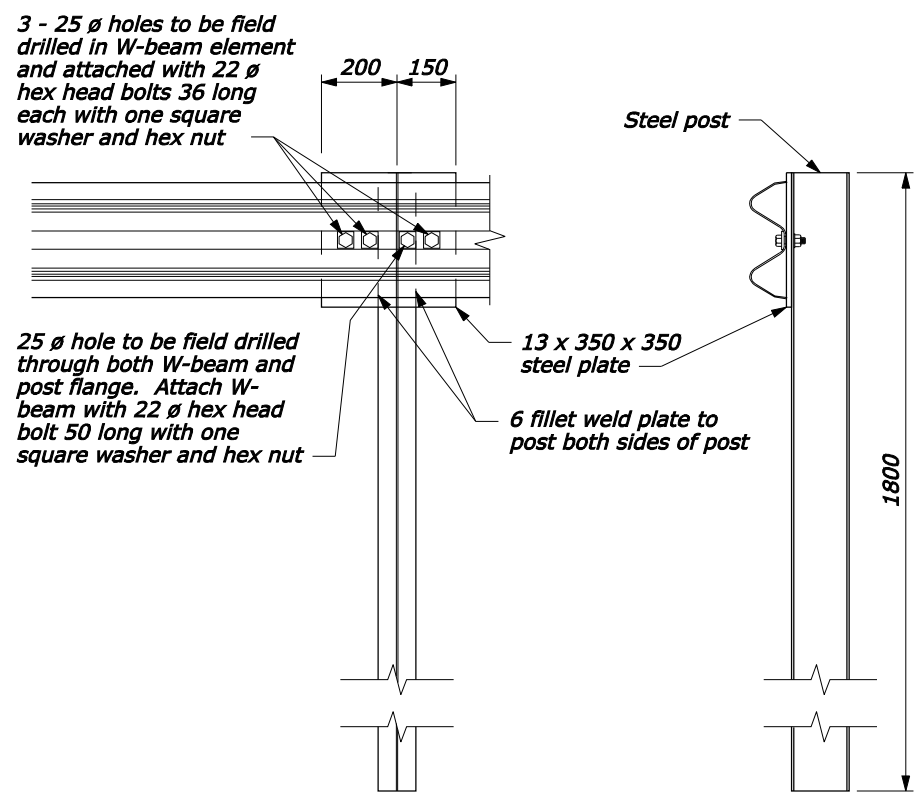
METRIC STANDARD
G4 W-BEAM GUARDRAIL BACK SLOPE ANCHOR TERMINAL TYPE G4-BAT
 Sheet 1 of 2

STANDARD APPROVED FOR USE 3/1996
 REVISED: 6/1997 6/2005
 DRAFT: 11/2007

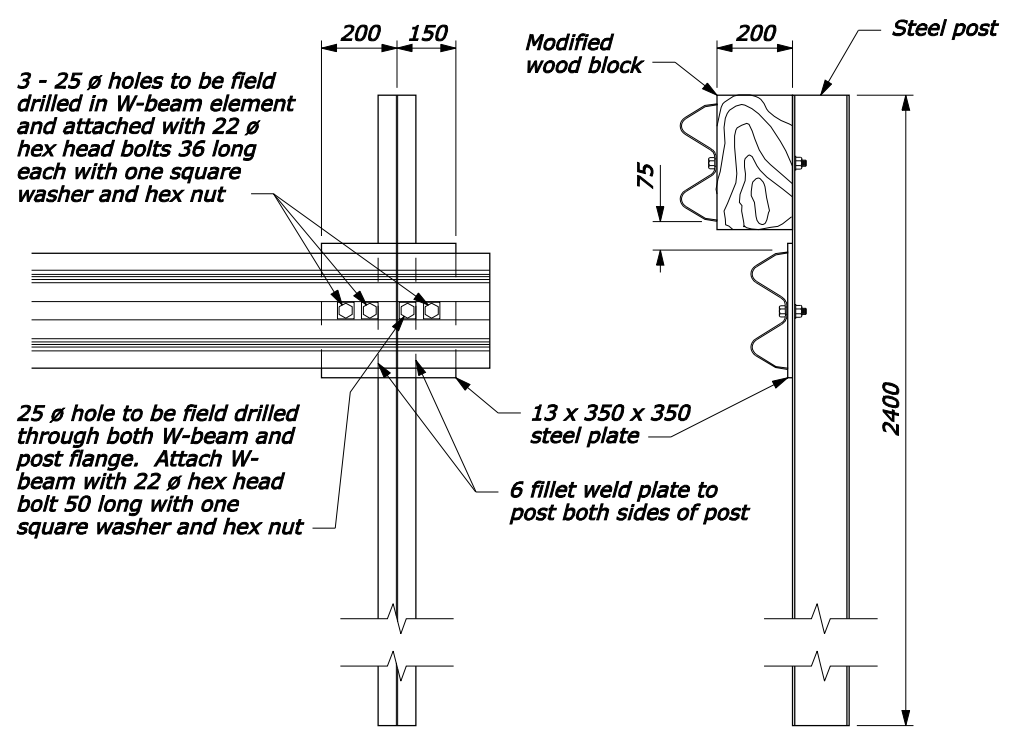
STANDARD
M617-17

NO SCALE

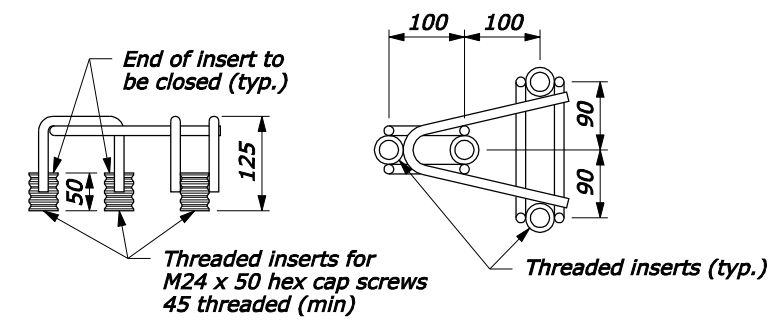
03-Dec-2007 01:44 PM f:\196.145.188.2\scd_plan\1661717.dgn [Metric]



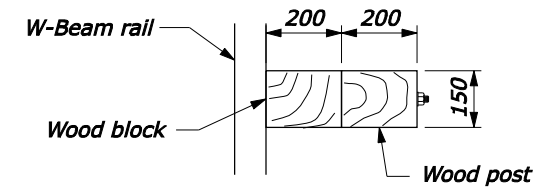
SPECIAL RAIL TO POST CONNECTION AT POSTS A, B, AND 1



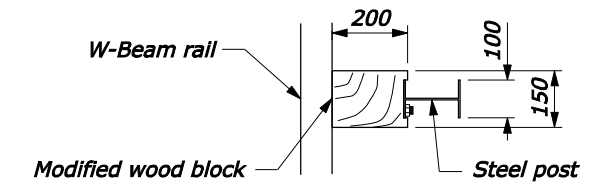
SPECIAL RUBRAIL TO POST CONNECTION AT POST 2



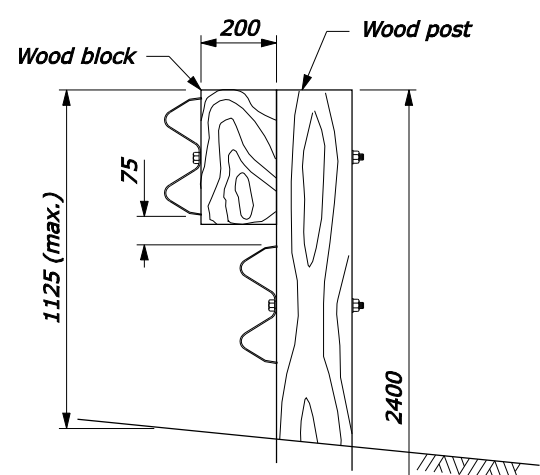
FRAMEWORK FOR THREADED INSERTS



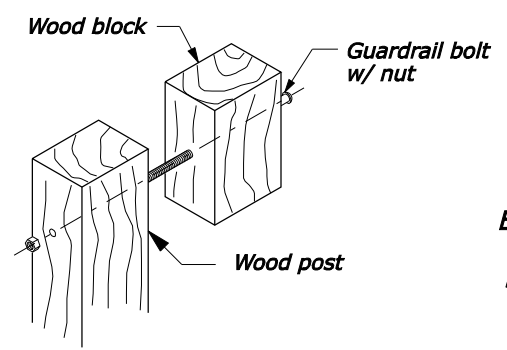
PLAN



PLAN

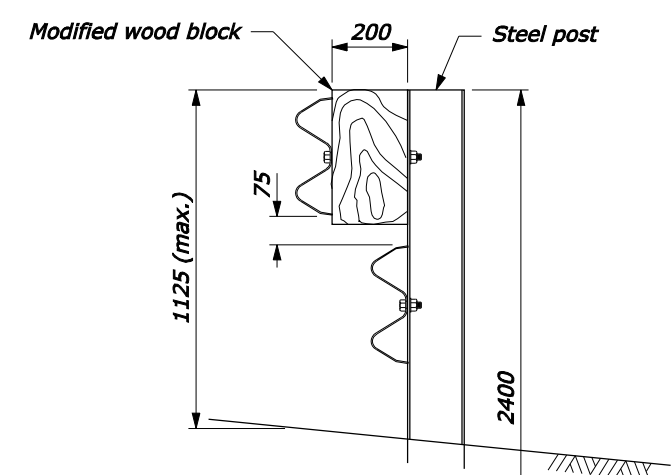


ELEVATION



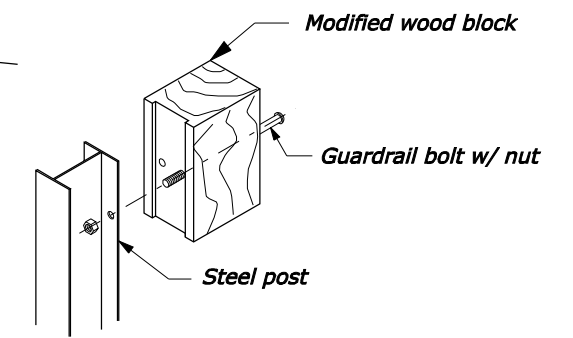
EXPLODED VIEW (Rail and washer not shown)

WOOD POST AND BLOCK DETAIL

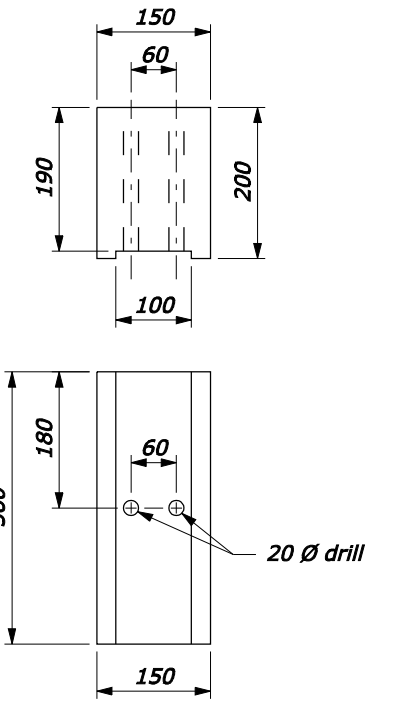


ELEVATION

STEEL POST AND BLOCK DETAIL



EXPLODED VIEW (Rail and washer not shown)



MODIFIED WOOD BLOCK

- NOTE:**
1. See sheet 1 of 2 for terminal layout.
 2. For posts #3 and higher match post material of adjacent guardrail run unless otherwise noted.
 3. Dimensions without units are millimeters.

U.S. DEPARTMENT OF TRANSPORTATION
FEDERAL HIGHWAY ADMINISTRATION
FEDERAL LANDS HIGHWAY

METRIC STANDARD
G4 W-BEAM GUARDRAIL BACK SLOPE ANCHOR TERMINAL TYPE G4-BAT
Sheet 2 of 2

STANDARD APPROVED FOR USE 3/1996

REVISOR: 6/1997 6/2005
DRAFT: 11/2007

STANDARD
M617-17

NO SCALE

03-Dec-2007 01:44 PM fpp://196.145.188.2/scl_plan/s61717.dgn [Metric]