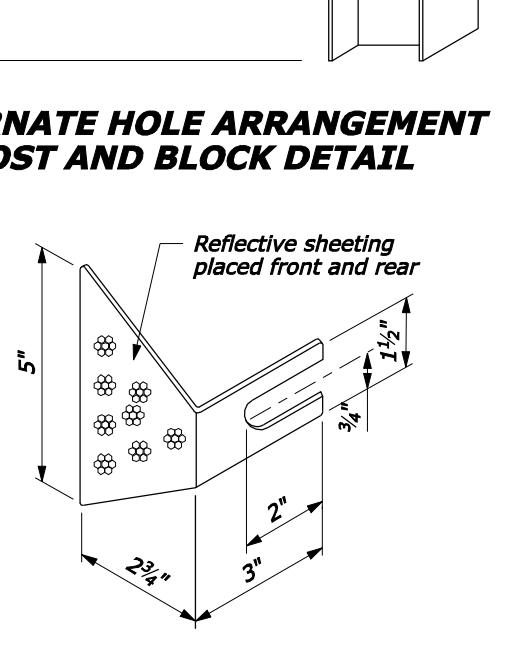
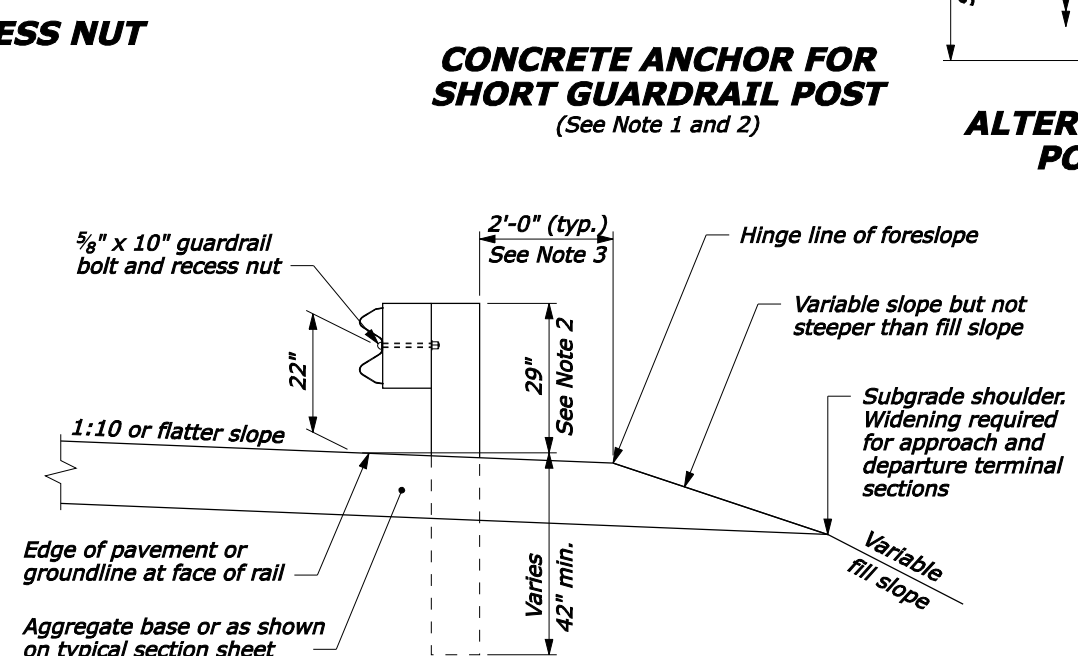
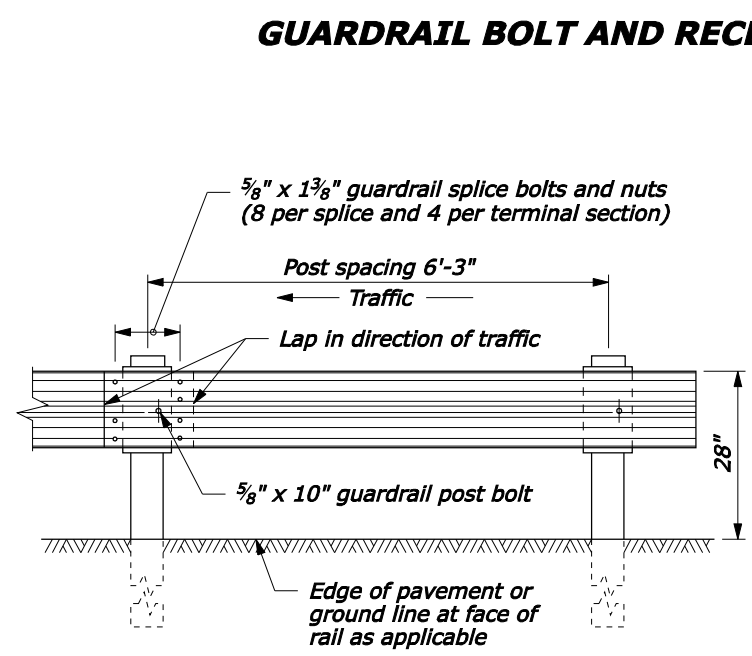
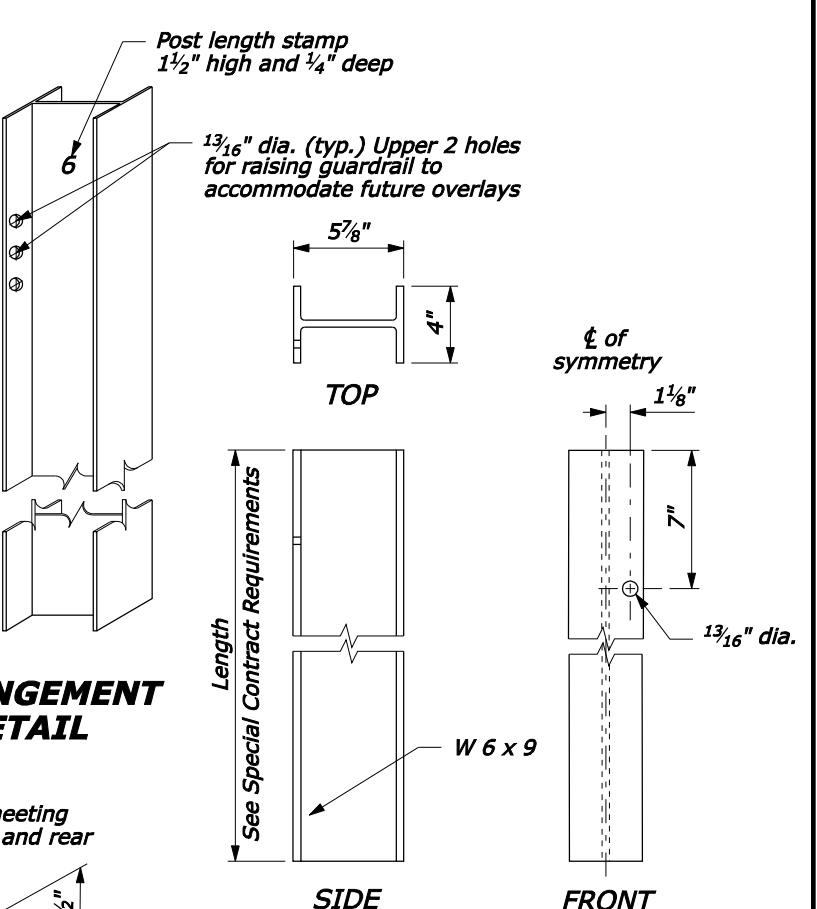
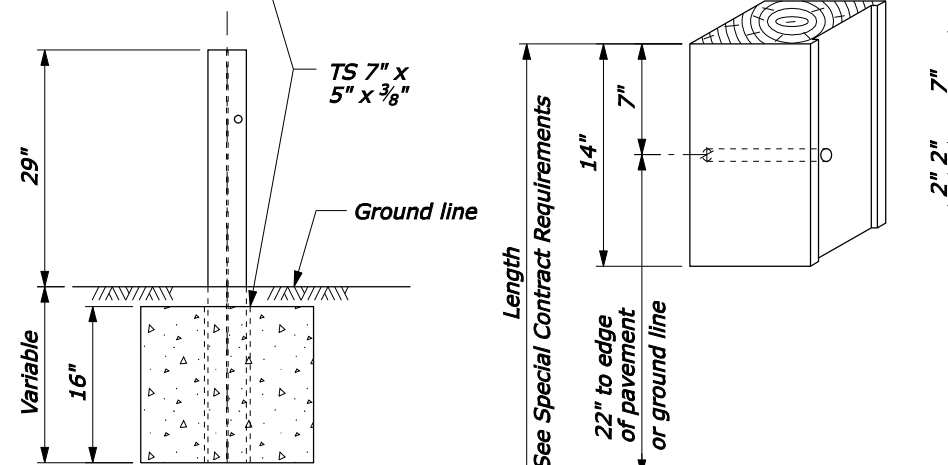
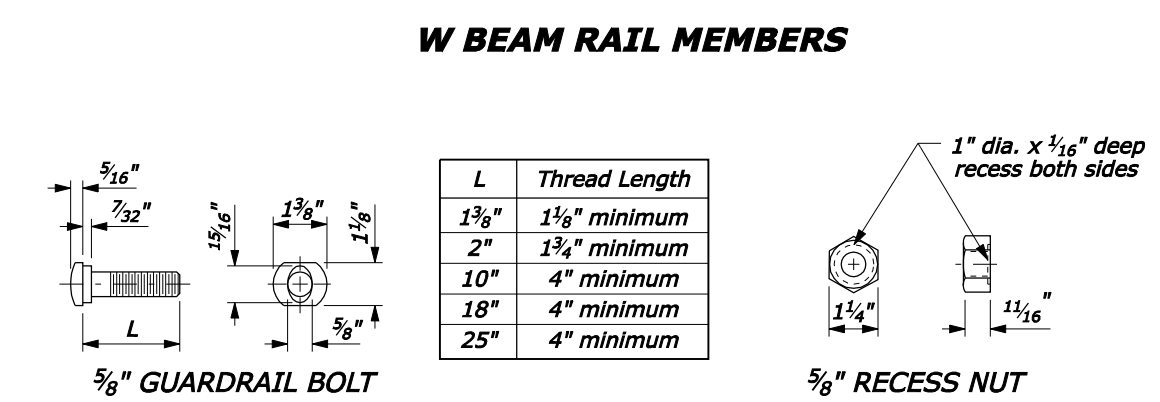
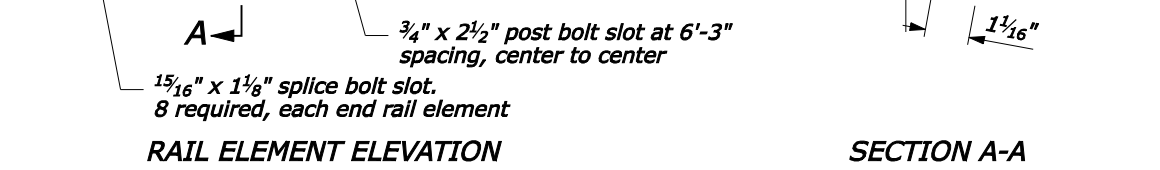


- NOTE:**
1. Use no more than 3 short guardrail posts in a row.
 2. If directed to use alternate hole arrangement, post above ground shall be 33 inches tall.
 3. See Special Contract Requirements when 7'-0" or longer posts are specified.
 4. Install reflector tab between post bolt and rail, every fourth post. Alternate reflector tab shapes are acceptable.
 5. Dimensional tolerances not shown or implied are intended to be those consistent with the proper functioning of the part, including its appearance, and accepted manufacturing practices.



U.S. DEPARTMENT OF TRANSPORTATION
FEDERAL HIGHWAY ADMINISTRATION
FEDERAL LANDS HIGHWAY

U.S. CUSTOMARY STANDARD

G4 W-BEAM GUARDRAIL STEEL POSTS

STANDARD APPROVED FOR USE 1/1994

REVISD: 4/1994 6/2005

DRAFT: 3/2007

STANDARD 617-11

F:\StdDraw\61711.dgn [US Customary] 12-Mar-2007 06:48 AM