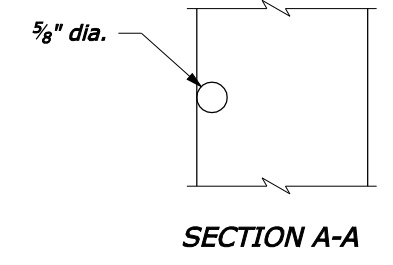
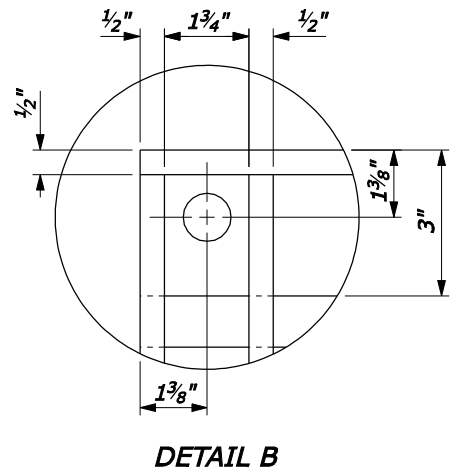


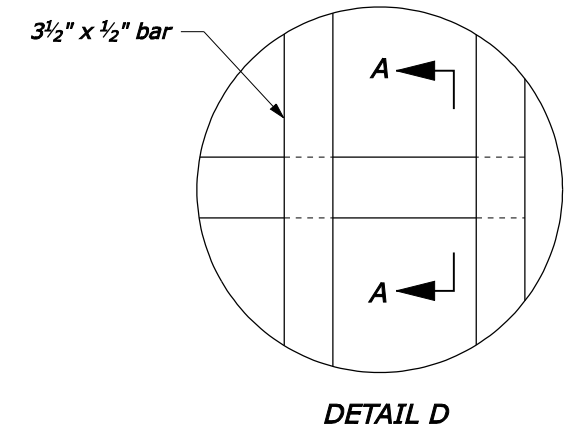
- NOTE:**
1. Hot dip galvanize all metal parts for frame and grate after fabrication.
 2. Fabricate frame and grate from structural steel.
 3. Furnish four 3/4" x 8" anchor bolts with nuts to attach frame to inlet.
 4. Cut holes 3 1/2" x 1/2" bar as required to place 5/8 inch diameter rods.
 5. Spot weld 5/8 inch diameter rods for frame and grate to 3 1/2" x 1/2" bars.



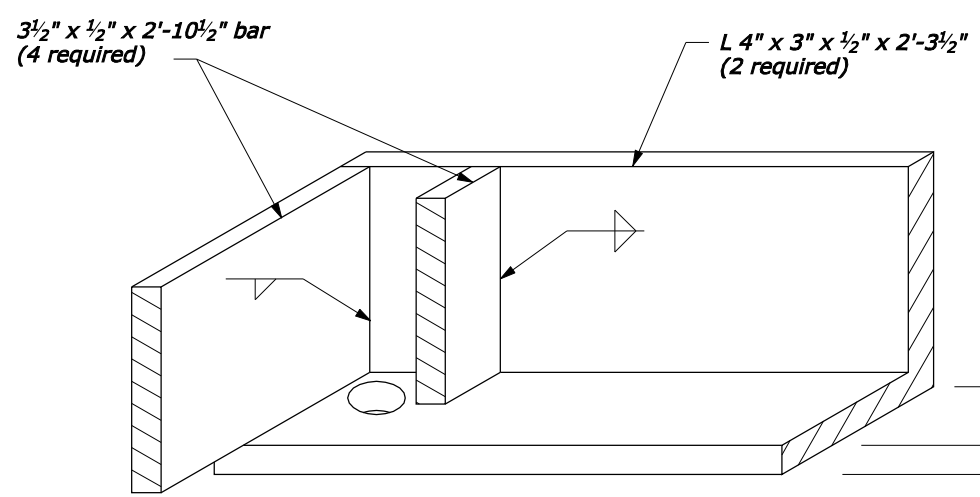
GRATE FRAME

GRATE

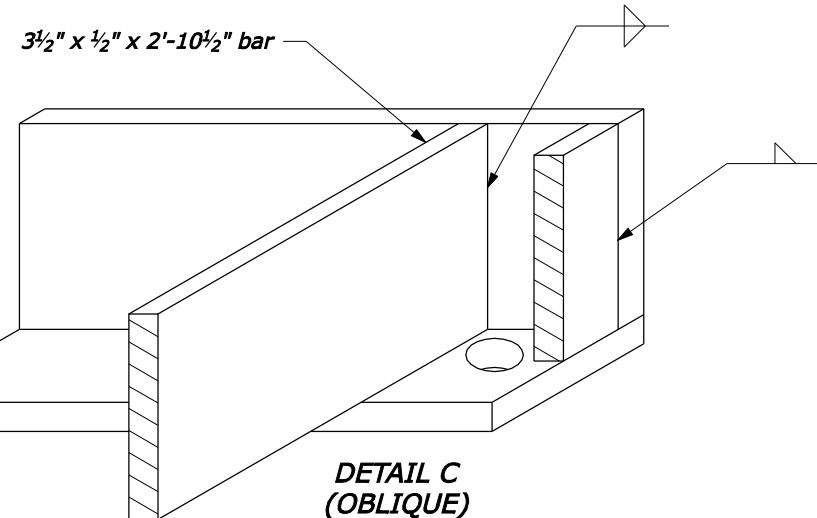
SECTION A-A



DETAIL D



DETAIL A (OBLIQUE)



DETAIL C (OBLIQUE)

NO SCALE

U.S. DEPARTMENT OF TRANSPORTATION FEDERAL HIGHWAY ADMINISTRATION FEDERAL LANDS HIGHWAY	
U.S. CUSTOMARY STANDARD	
FRAME AND GRATE TYPE 5A	
STANDARD APPROVED FOR USE 6/2005	STANDARD
REVISED:	604-6