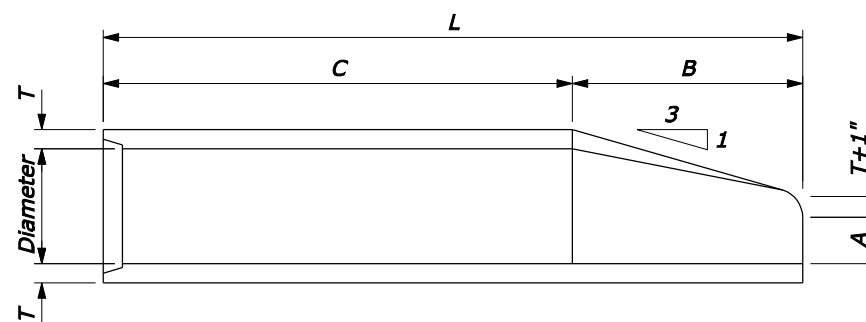
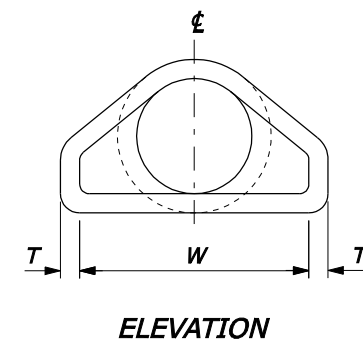
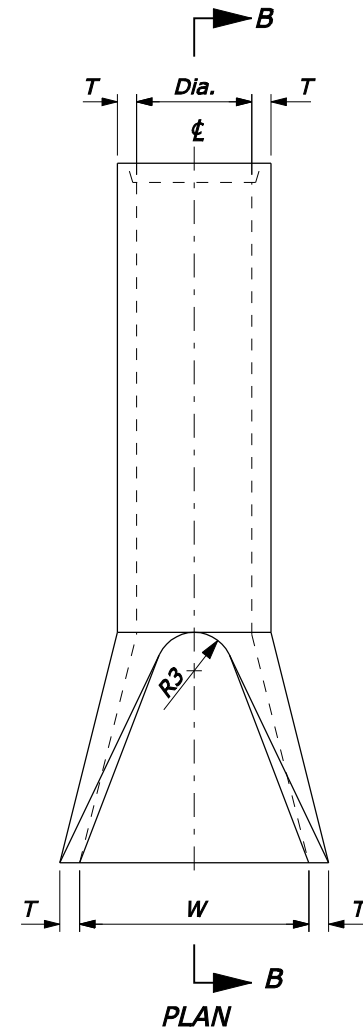


SECTION A-A



SECTION B-B

NOTE:

- Variations in design and dimensions are permitted to allow for manufacturer's standards.
- Fabricate the outlet end section with a groove end and the inlet end section with a tongue end.
- Warp embankment slopes to match the slope of the flared end section.

| PIPE SIZE DIAMETER INCHES | DIMENSIONS INCHES | | | | | | | | | |
|---------------------------|-------------------------------|--------------------------------|--------------------------------|--------------------------------|--------------------------------|----|----|--------------------------------|--------------------------------|-------------------------------|
| | T | A | B | C | L | W | F | R1 | R2 | R3 |
| 12 | 2 | 4 | 24 | 48 ⁷ / ₈ | 72 ⁷ / ₈ | 24 | 13 | 10 ¹ / ₈ | 9 | 4 |
| 15 | 2 ¹ / ₄ | 6 | 27 | 46 | 73 | 30 | 16 | 12 ¹ / ₂ | 11 | 6 |
| 18 | 2 ¹ / ₂ | 9 | 27 | 46 | 73 | 36 | 19 | 15 ¹ / ₂ | 12 | 7 ¹ / ₂ |
| 21 | 2 ³ / ₄ | 9 | 36 | 37 | 73 | 42 | 22 | 16 ¹ / ₂ | 13 | 5 |
| 24 | 3 | 9 ¹ / ₂ | 43 ¹ / ₂ | 30 | 73 ¹ / ₂ | 48 | 25 | 16 ³ / ₄ | 14 | 8 |
| 27 | 3 ¹ / ₄ | 10 ¹ / ₂ | 48 | 25 ¹ / ₂ | 73 ¹ / ₂ | 54 | 28 | -- | 14 ¹ / ₂ | 9 |
| 30 | 3 ¹ / ₂ | 12 | 54 | 19 ³ / ₄ | 73 ³ / ₄ | 60 | 31 | 18 ¹ / ₂ | 15 | 8 |
| 33 | 3 ³ / ₄ | 13 ¹ / ₂ | 59 ¹ / ₂ | 37 ¹ / ₂ | 96 | 66 | 34 | 23 ³ / ₄ | 17 ¹ / ₂ | 9 |
| 36 | 4 | 15 | 63 | 33 | 96 | 72 | 37 | 23 ³ / ₄ | 20 | 11 |
| 42 | 4 ¹ / ₂ | 21 | 63 | 33 | 96 | 78 | 43 | -- | 22 | 11 |
| 48 | 5 | 24 | 72 | 24 | 96 | 84 | 49 | -- | 22 | 12 |

NO SCALE

| | |
|--|-------------------|
| U.S. DEPARTMENT OF TRANSPORTATION FEDERAL HIGHWAY ADMINISTRATION FEDERAL LANDS HIGHWAY | |
| U.S. CUSTOMARY STANDARD | |
| CONCRETE END SECTION FOR ROUND PIPE | |
| STANDARD APPROVED FOR USE 12/1993 REVISED: 4/1994 6/2005 | STANDARD 602-8 |