

Bayou Bonfouca Superfund Site Slidell, Louisiana

PHOTO #1 - The abandoned American Creosote plant in 1987. Creosote contamination was present in surface soils with heavy contamination in bayou sediments. The creosote plant's safe, made of 4-foot thick brick walls, is in the center of the picture.



PHOTO #2 - Computer controlled dredging of bayou sediments. Debris (tires, logs, rocks, cars, etc.) was removed from the sediments at the dredge. Sediments were conveyed via floating pipeline (24 inch diameter) to a holding pond where water was removed. The sediments were then transferred to a filter press and blended for homogeneity.

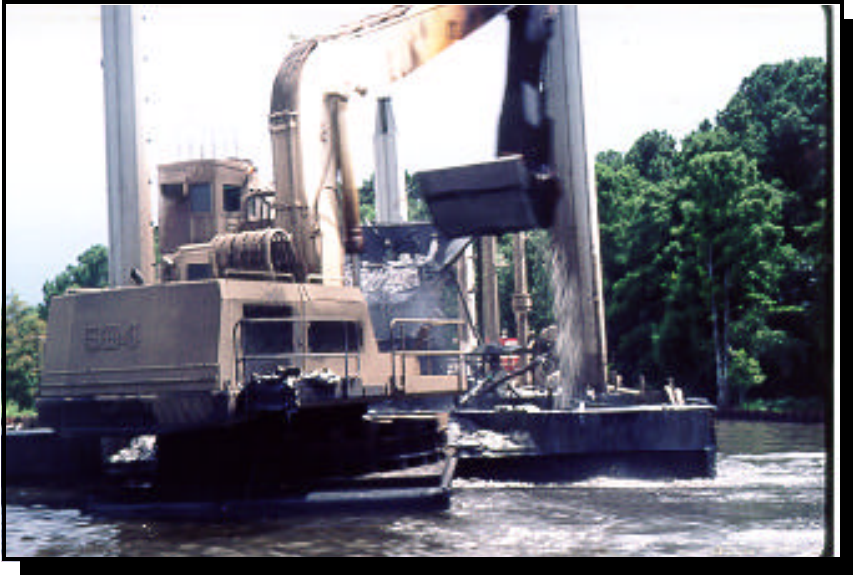


PHOTO #3 - Incineration operations at the Bayou Bonfouca site on a cold morning in December 1995. The incinerator and associated equipment were dismantled and removed in late 1996 following destruction of wastes from the nearby Southern Shipbuilding Corporation Superfund site.



PHOTO #4 - Following thermal treatment the incinerator ash was placed in an onsite landfill, along with marginally contaminated soil and debris. An engineered cap was then constructed of high density polyethylene (HDPE), a geotextile material (Claymax) and native clay soil.



PHOTO #5 - Bayou Bonfouca following remedial action (December 1995). A public boat launch facility, built by the City of Slidell, has increased recreational use of the area. Aquatic organisms and water birds have returned to the area.



PHOTO #6 - Aerial view of the Bayou Bonfouca site in January 1997. The grassy area in the center of the picture is the treated material (ash) disposal area. Bayou Bonfouca is on the bottom left side of the photo. Construction of a new City of Slidell sewage treatment facility is beginning in the center right side of the photo.

