

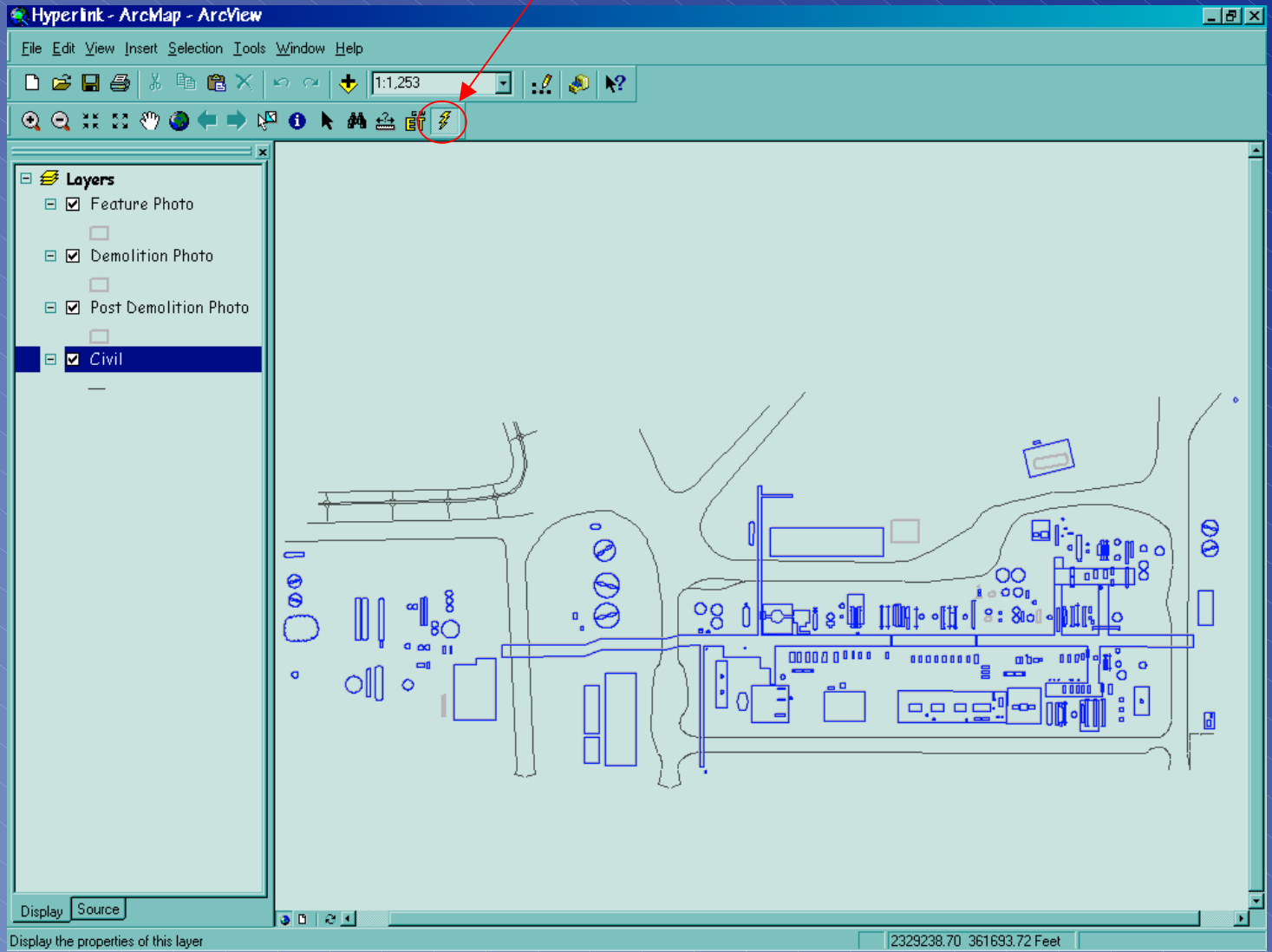


HUDSON GIS

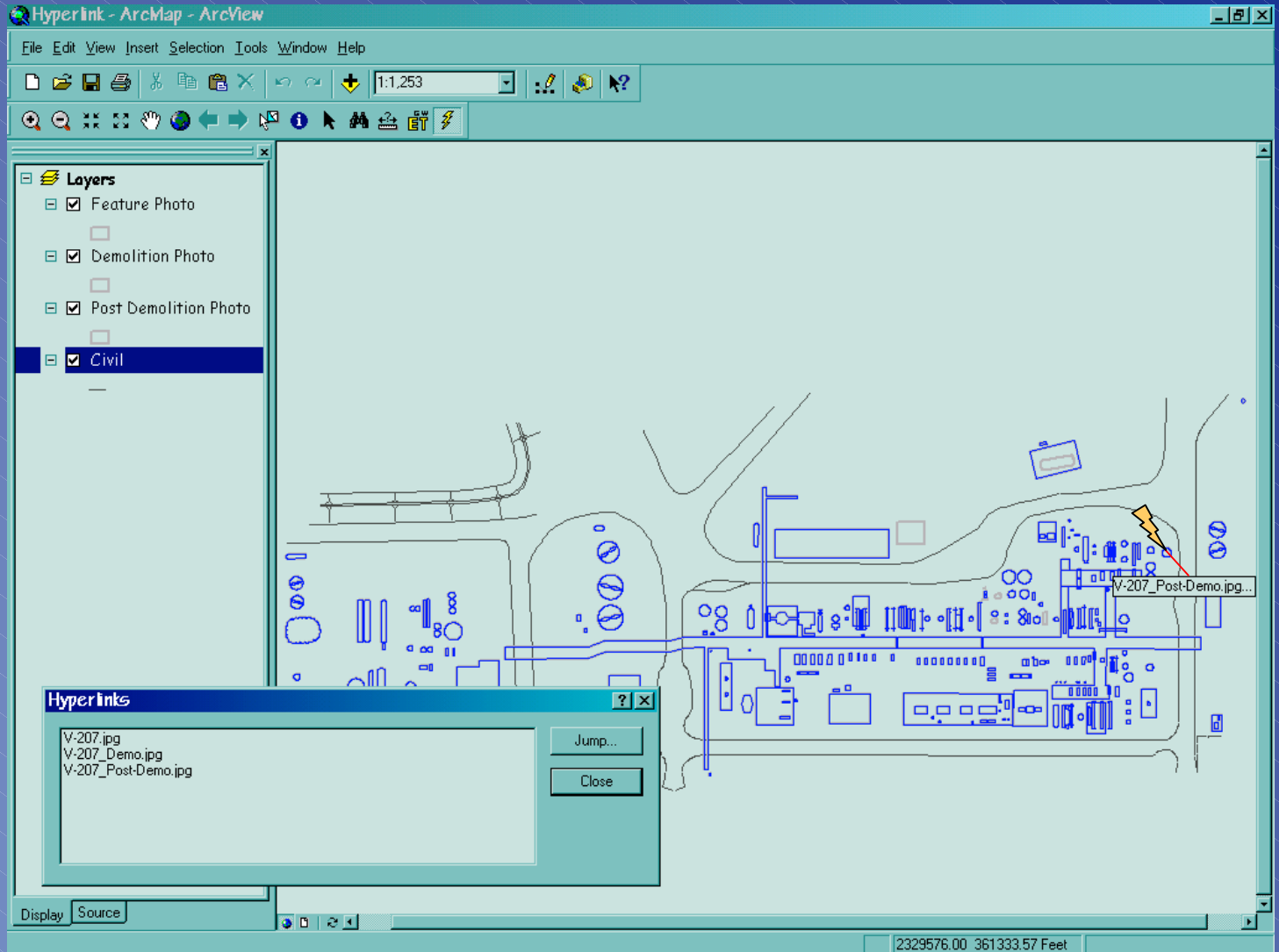
Photo Hyperlink

GIS -Photo Hyperlinks

Hyperlink Tool

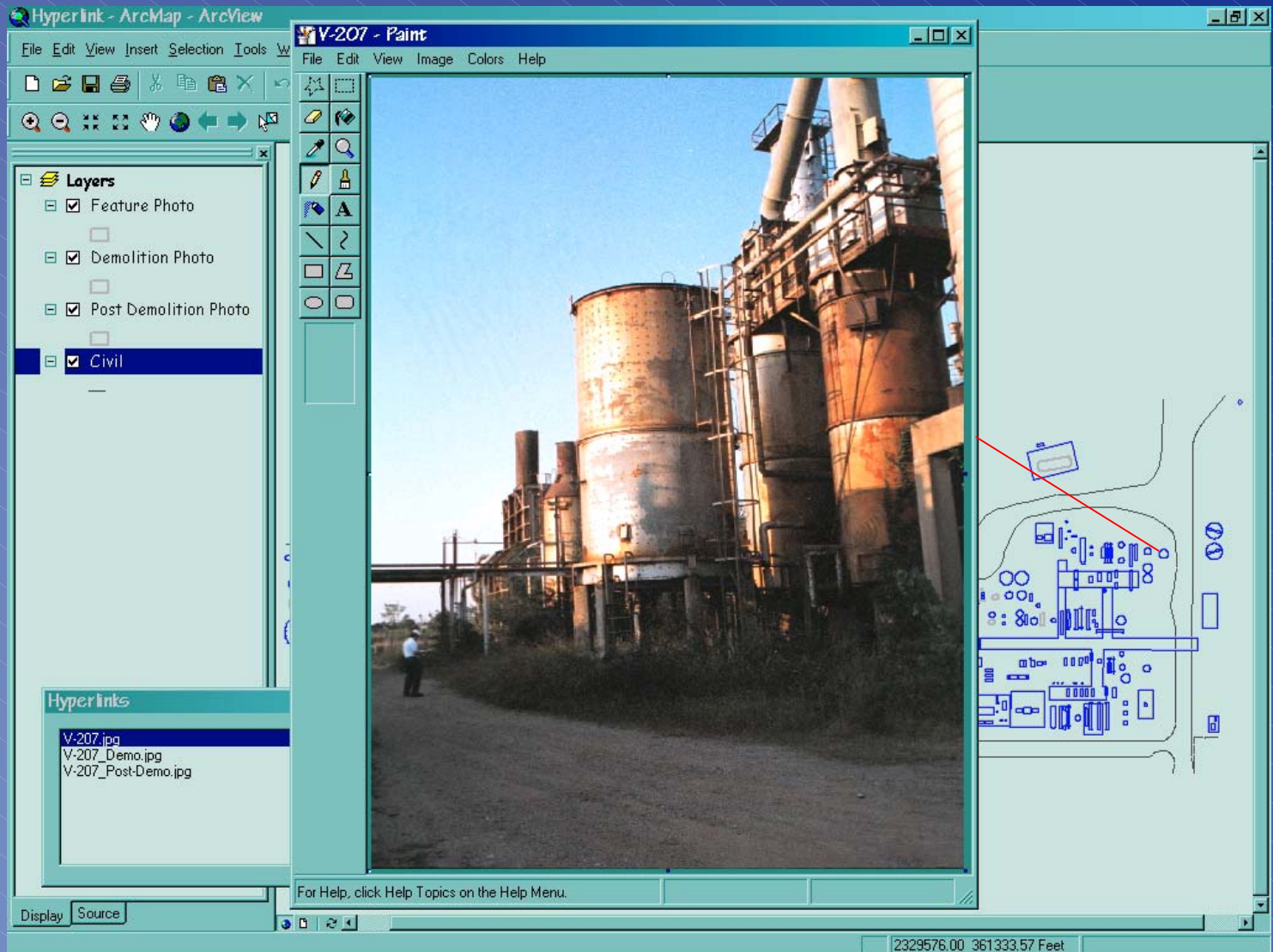


GIS -Photo Hyperlink #1



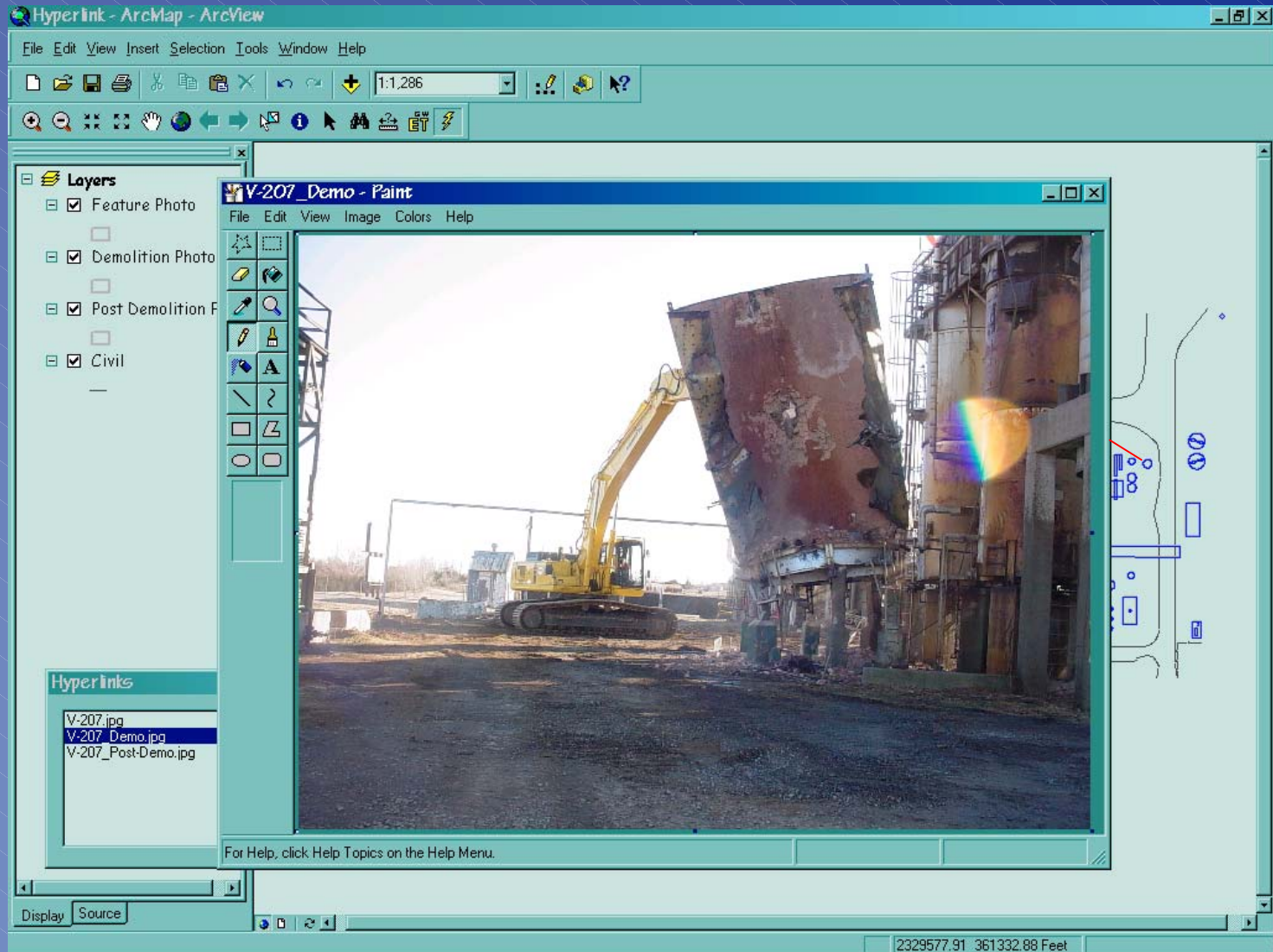
GIS

-Photo Hyperlink #1 - Feature Photo



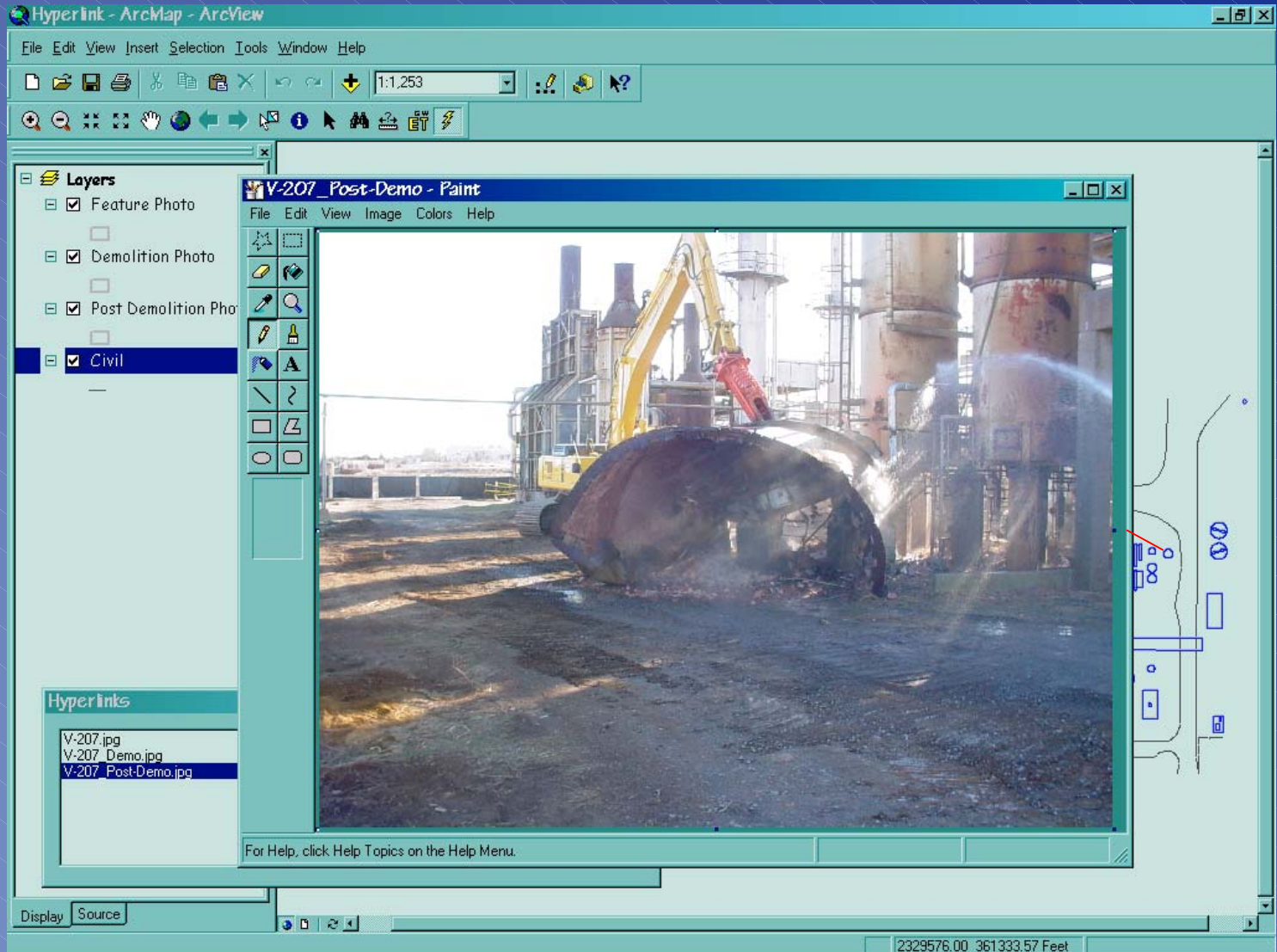
GIS

-Photo Hyperlink #1 - Demolition Photo

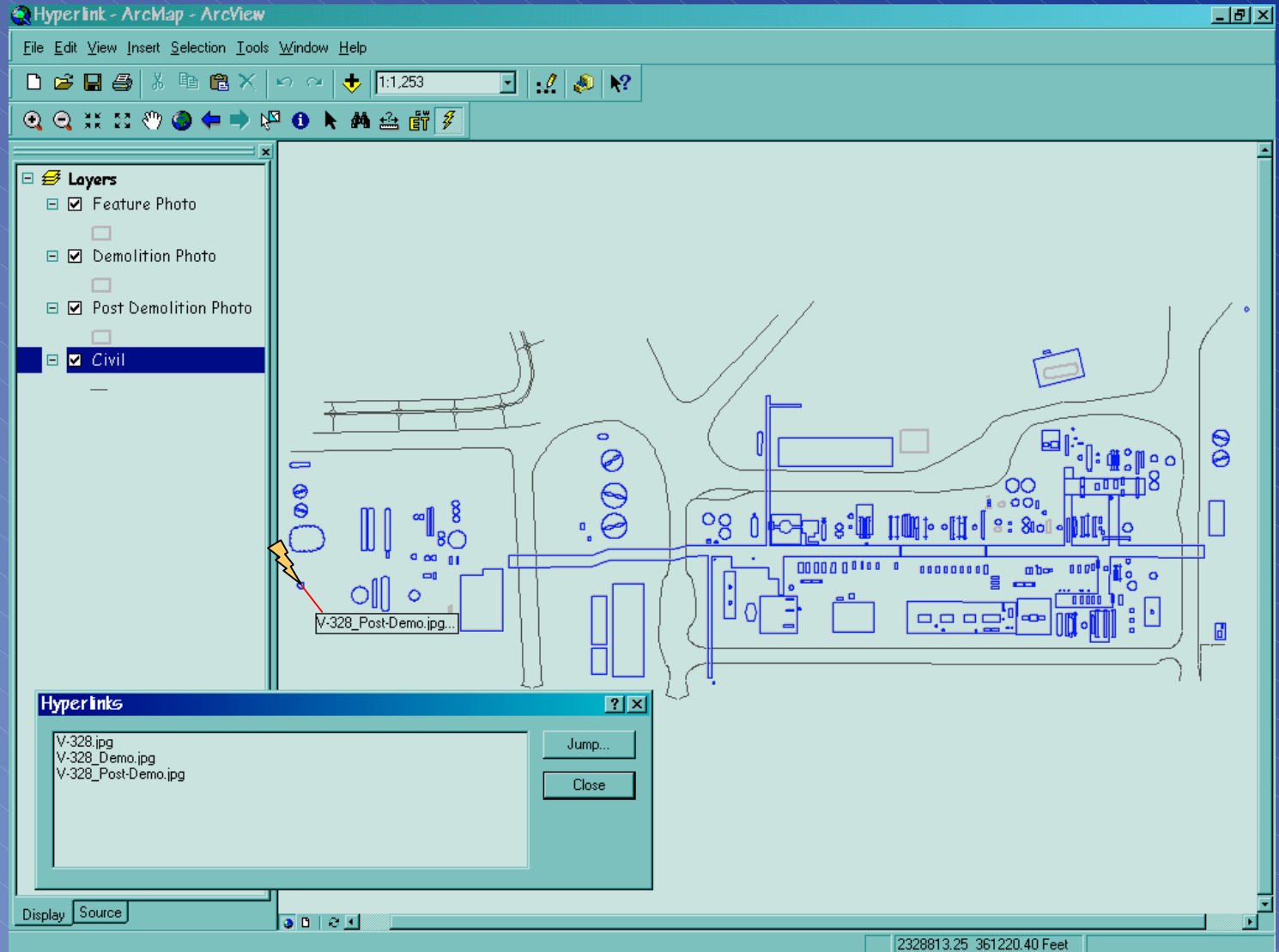


GIS

-Photo Hyperlink #1 - Post-Demo Photo

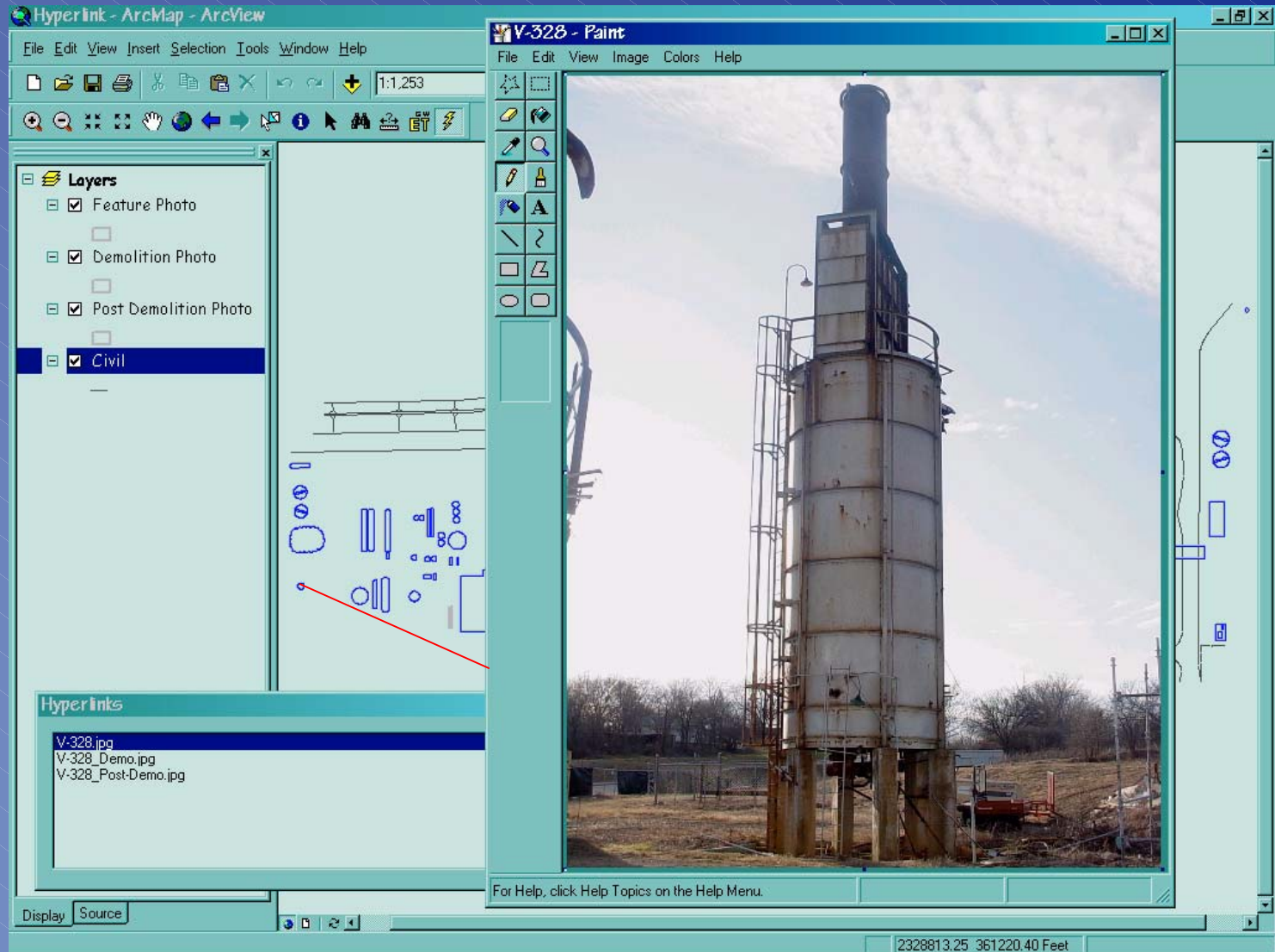


GIS -Photo Hyperlink #2



GIS

-Photo Hyperlink #2 - Feature Photo



GIS

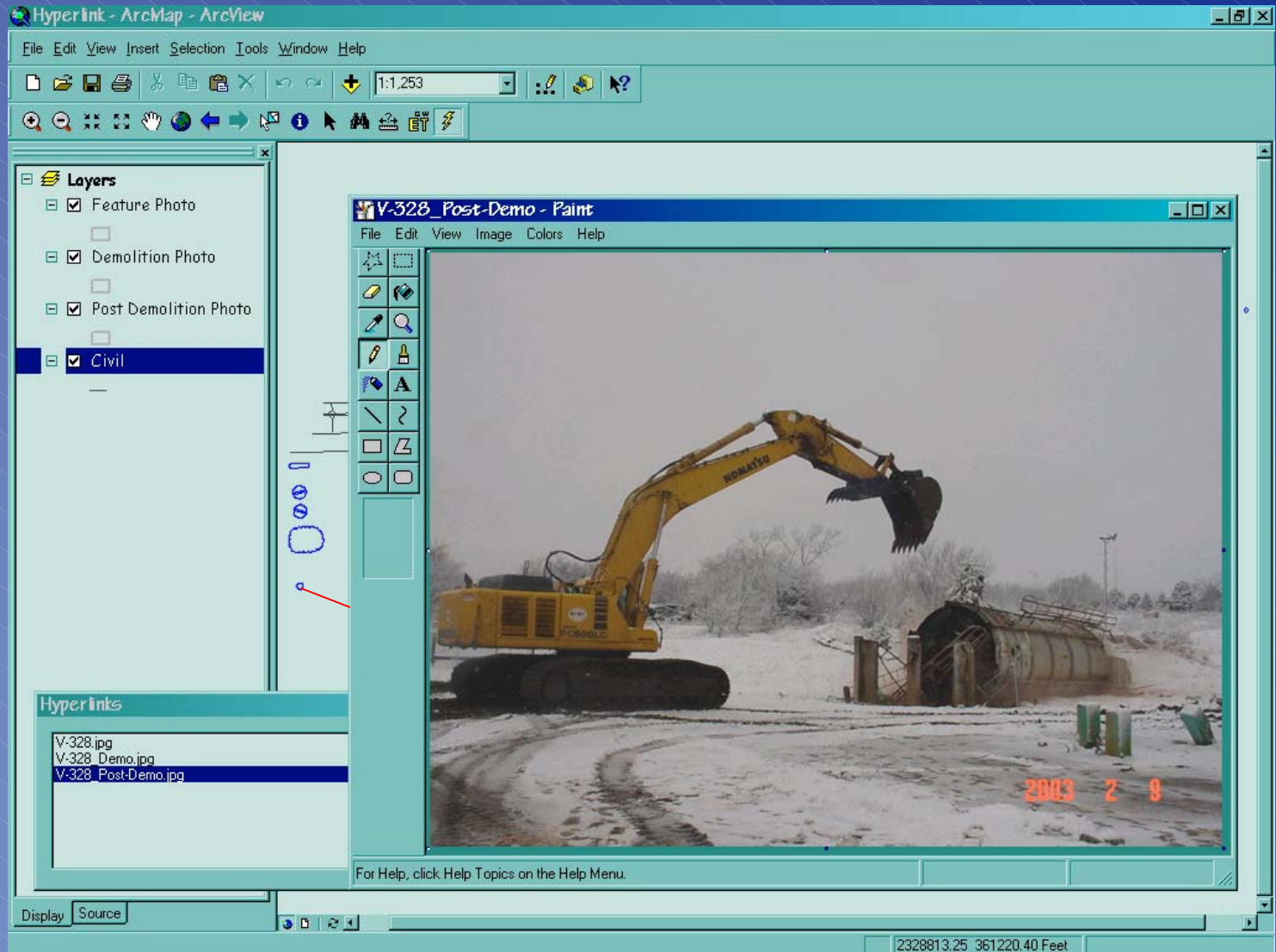
-Photo Hyperlink #2 - Demolition Photo

The screenshot displays the ArcMap interface with the following components:

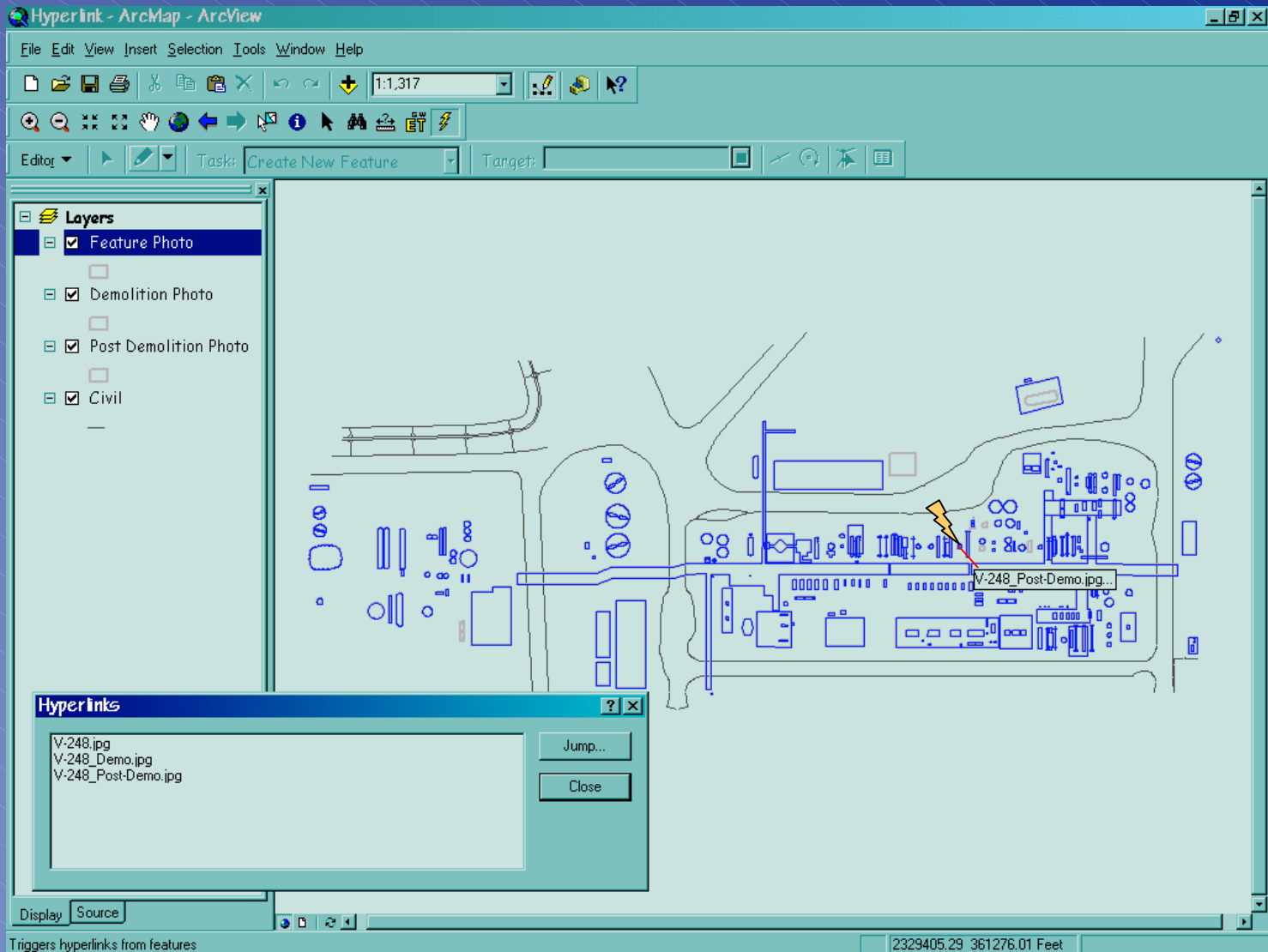
- Hyperlink - ArcMap - ArcView** window title bar.
- Menu bar: File, Edit, View, Insert, Selection, Tools, Window, Help.
- Toolbar: Standard GIS navigation and editing tools.
- Layers** panel on the left:
 - Feature Photo (checked)
 - Demolition Photo (checked)
 - Post Demolition Photo (checked)
 - Civil (checked)
- Hyperlinks** panel at the bottom left:
 - V-328.jpg
 - V-328_Demo.jpg (highlighted)
 - V-328_Post-Demo.jpg
- V-328_Demo - Paint** window in the center:
 - Menu bar: File, Edit, View, Image, Colors, Help.
 - Image of a yellow Komatsu excavator lifting a large, cylindrical metal structure in a snowy field.
 - Hand-drawn blue annotations on the left side of the image, including a circle and lines.
- Status bar at the bottom: 2328813.25 361220.40 Feet.

GIS

-Photo Hyperlink #2 - Post-Demo Photo

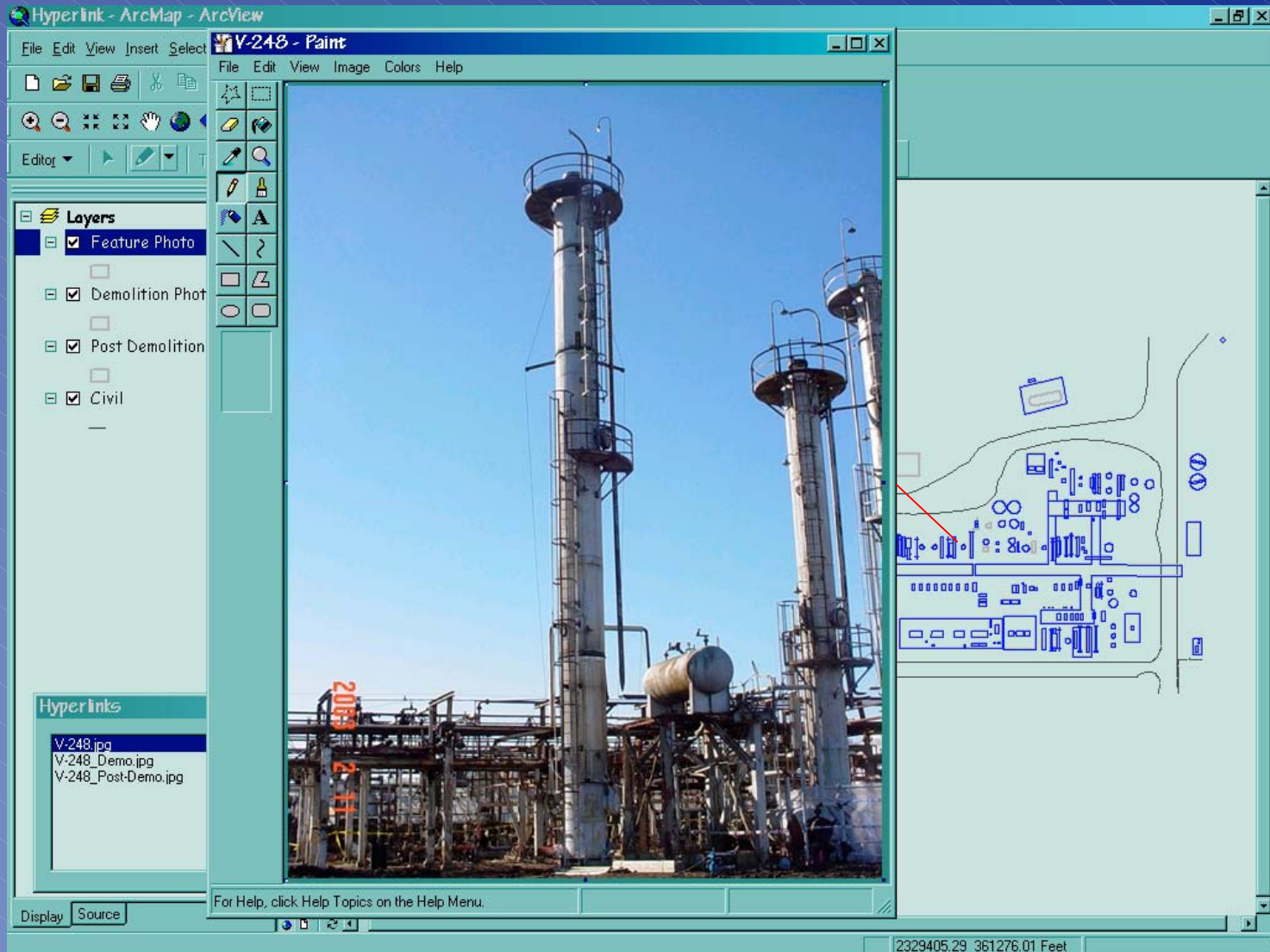


GIS -Photo Hyperlink #3



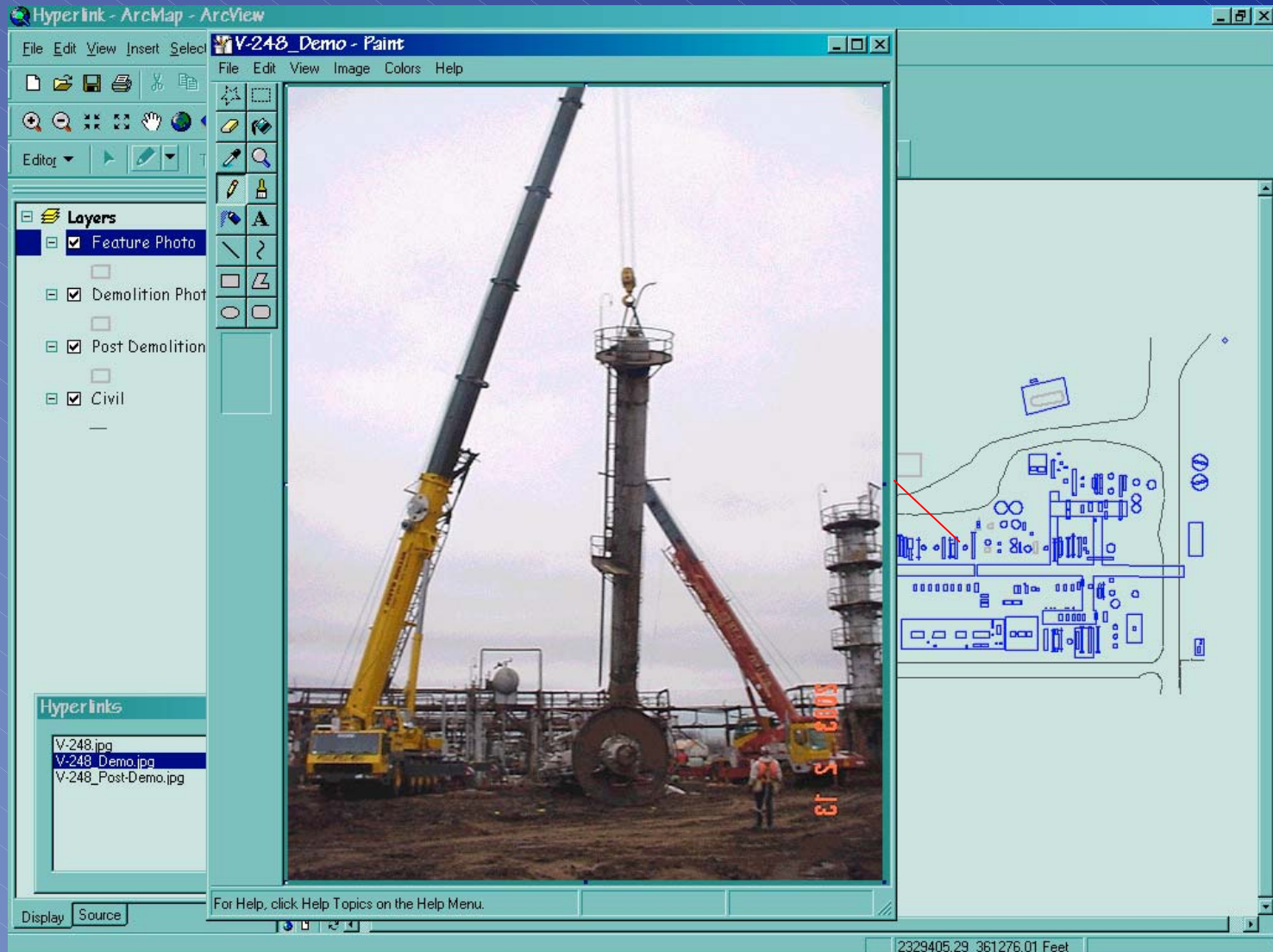
GIS

-Photo Hyperlink #3 - Feature Photo



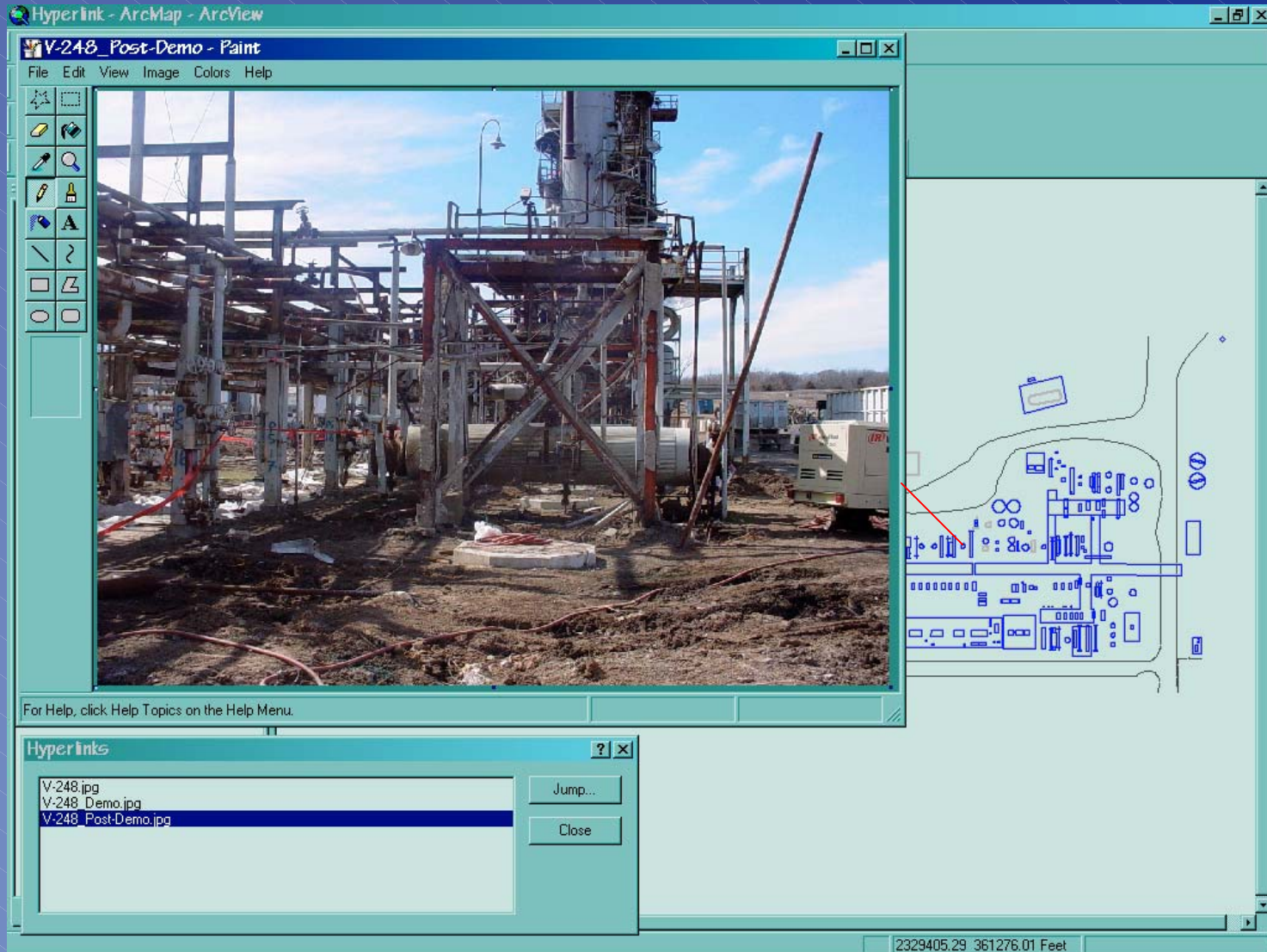
GIS

-Photo Hyperlink #3 - Demolition Photo



GIS

-Photo Hyperlink #3- Post-Demo Photo



DATABASE JOIN

GIS -Database Join

Database_Link - ArcMap - ArcView

File Edit View Insert Selection Tools Window Help

1:280

Identify Results

Layers: <Top-most layer>

Refinery_Features Location: (2329545.284651 361326.936815)

Field	Value
Feature_ID	E-201
Group	4
Photo	E-201.jpg
DemoPhoto	
PostDemo	E-201_Post-Demo.jpg
EQUIP_SERVICE	Rx Eff - Charge Cold Shell
REFINERY_UNIT	Hydrobon
EQUIP_TYPE	Exchanger
TRACKING_TYPE	Process Unit
COMMENTS	<null>
DATE_REMOVED	02/19/03
LENGTH	0
DISPOSAL_SITE	On-site staging area
COMMENTS	<null>
DRILL_TAPS	0
PIPE_TAPS	2
TAP_DATE	1/16/2003
PHASE	L
CHARACTERIZATION	Oily Waste
QUANTITY	50
QUANTITY_NOTATION	<null>
UNITS	GAL
DISPOSAL_SITE	Frac Tank
ABATEMENT_DATE	3/15/2003
ABATEMENT_PROCEDURE_CODE	2
QUANTITY_ABATED	200
UNITS	SF

Layers

- Group
 - 1
 - 3
 - 4
 - 5
 - 6
 - 7
- Drains & Sumps
- Civil

Display Source

Drawing

Arial 10

2329526.02 361389.56 Feet

GIS

-Database Join & Photo Hyperlink #1

The screenshot displays the ArcMap interface with the following components:

- Layers Panel:** Shows a layer named "Refinery_Features" with a group of features numbered 1 through 7, and checkboxes for "Drains & Sumps" and "Civil".
- Identify Results Panel:** Shows the results of an identify operation on the "Refinery_Features" layer. The results are as follows:

Feature_ID	Value
E-201	Field
E-202	Feature_ID
	Group
	Photo
	DemoPhoto
	PostDemo
	EQUIP_SERVICE
	REFINERY_UNIT
	EQUIP_TYPE
	TRACKING_TYPE
	COMMENTS
	DATE_REMOVED
	LENGTH
	DISPOSAL_SITE
	COMMENTS
	DRILL_TAPS
	PIPE_TAPS
	TAP_DATE
	PHASE
	CHARACTERIZATION
	QUANTITY
	QUANTITY_NOTATION
	UNITS
	DISPOSAL_SITE
	ABATEMENT_DATE
	ABATEMENT_PROCEDURE_CODE
	QUANTITY_ABATED
	UNITS

The "Photo" field for feature E-202 is linked to "E-201.jpg", and the "DemoPhoto" field is linked to "E-201_Post-Demo.jpg".

- E-201.JPG Window:** Displays a photograph of industrial equipment, including large storage tanks and piping.
- E-201_Post-Demo.JPG Window:** Displays a photograph of a tall industrial distillation column.
- Main Map:** Shows a schematic diagram of refinery equipment with various units labeled (e.g., V-196, V-197, V-198, V-200, V-204, V-205, V-206, V-151, V-122, E-200, E-203, E-201, E-152, P-195, P-196, P-199).
- Status Bar:** Shows the current location as 2329530.39 361277.20 Feet.


GIS

-Database Join & Photo Hyperlink #2

Database_Link - ArcMap - ArcView

File Edit Image Help

V-291.JPG

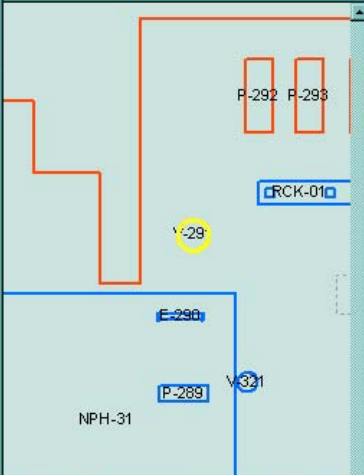


Layer>


Attributes

Location: (2329242.677840 361222.476903)


Field	Value
Feature_ID	V-291
Group	6
Photo	V-291.jpg
DemoPhoto	V-291_Demo.jpg
PostDemo	V-291_Post-Demo.jpg
EQUIP_SERVICE	Feed Water Deaerator
REFINERY_UNIT	FCCU
EQUIP_TYPE	Vessel
TRACKING_TYPE	Process Unit
COMMENTS	<null>
DATE_REMOVED	02/15/03
LENGTH	0
DISPOSAL_SITE	On-site staging area
COMMENTS	<null>
DRILL_TAPS	<null>
PIPE_TAPS	<null>
TAP_DATE	<null>
PHASE	<null>
CHARACTERIZATION	<null>
QUANTITY	<null>
QUANTITY_NOTATION	<null>
UNITS	<null>
DISPOSAL_SITE	<null>
ABATEMENT_DATE	2/19/2003
ABATEMENT_PROCEDURE_CODE	2
QUANTITY_ABATED	126
UNITS	SF



V-291_Demo.JPG




V-291_Post-Demo.JPG




10 B I U A

2329218.60 361222.17 Feet



MOVIE HYPERLINK



GIS - Movie & Photo Hyperlink

