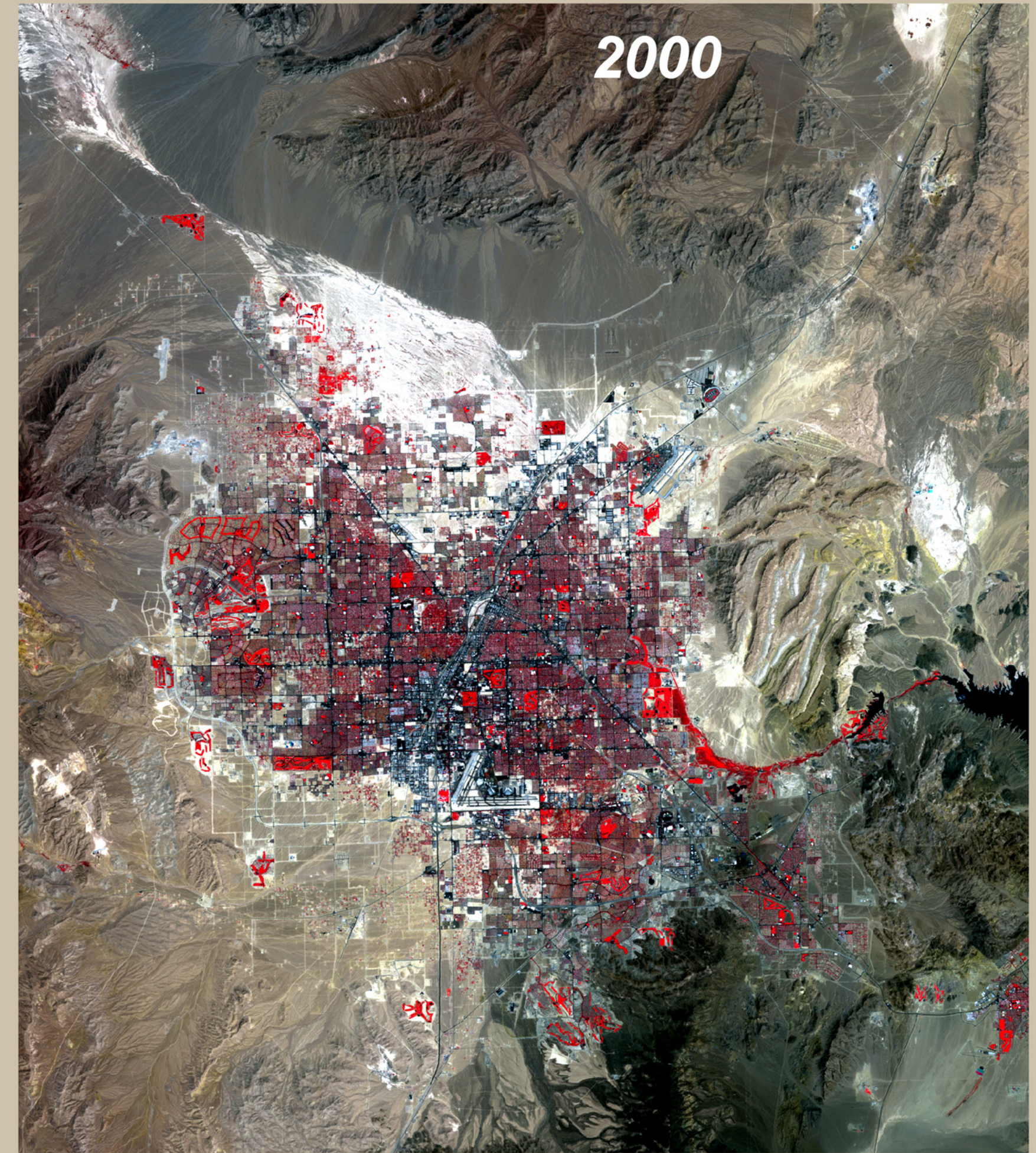


Landscape Change of the Las Vegas Valley

1972 to 2000



Landsat 1 - Multi-Spectral Scanner Image August 13, 1972



Landsat 7 - Thematic Mapper Image August 7, 2000

Las Vegas has become one of the fastest growing metropolitan areas in the United States. The cities population has doubled from 1980 to 1994 and in 1995 Las Vegas has surpassed the one million mark. The population of Las Vegas is currently growing at a rate of 7 percent annually. At this rate, the number of people will double again in ten years.

These satellite images are shown in false color, which means the vegetation is shown in red.

**U.S. Environmental Protection Agency
Office of Research and Development
Landscape Ecology Branch
Daniel T. Heggem and Curtis M. Edmonds**

Future growth may be limited by the availability of water. Water allocation and resource management will be a subject of great concern. Water usage and water quality can be linked to the landscape changes which occur in a region. It is possible to measure landscape change over a large area and determine the trends in ecological and hydrological condition.