

Roseburg District BLM Planning Update



Winter 2006

Dear Citizen:

The Planning Update is published to provide current information about specific projects and future events planned on the Roseburg District of the Bureau of Land Management. Please send written comments, including the specific project and field office name, to 777 N.W. Garden Valley Blvd., Roseburg, Oregon 97470, during the public comment period.

BLM recently received a ruling from the Ninth Circuit Court of Appeals in Klamath Siskiyou Wildlands et al v. Boody et. al., No. 06-35214 (CV 03-3124, District of Oregon), regarding the 2001 and 2003 Annual Species Reviews for the red tree vole. It is anticipated that this ruling will have an effect on some of the BLM timber management activities included in this update. This Planning Update contains current information about BLM activities, but does not include consideration of the effects of this recent court ruling. The next Quarterly Planning Update will be updated to reflect any changes made due to the Ninth Circuit Court of Appeals' recent decision.

SPECIAL NOTICE: *Please notify us if you would prefer to receive the Roseburg District BLM Planning Update via email. Instead of receiving future paper copies through the standard mail, you will receive electronic email copies or notifications regarding future planning updates. This will save time and energy for everyone. Please send your email address to us at or100mb@blm.gov, and indicate that you would like to help us conserve natural resources by receiving future Planning Updates electronically. If you choose not to respond, you will remain on our current postal mailing list. Thank you!*

Please remember to ask us to remove your name from our mailing list if you no longer wish to receive the Planning Update. For your convenience, you can also find a copy of the Planning Update at the Douglas County Library. Your written comments and concerns are welcome.

Thank you for your continued interest.

Sincerely,

Jay K. Carlson
District Manager

Table of Contents

Key Contact	1
Non-Discretionary Actions Under Reciprocal Right-of-Way Agreements	1
South River Field Office	2
Swiftwater Field Office	2
New Projects	2
South River Field Office	2
Status of Previous Planning Update Action Items	3
South River Field Office	3
Swiftwater Field Office	6
Deferred Analyses	9
South River Field Office	10
Swiftwater Field Office	10
Watershed Analysis Status	10
South River Field Office	10
Swiftwater Field Office	10
South River Resource Area Map	10
Swiftwater Resource Area Map	12
Abbreviations and Definitions	13

SPECIAL NOTICE: *Please notify us if you would prefer to receive the Roseburg District BLM Planning Update via email. Instead of receiving future paper copies through the standard mail, you will receive electronic email copies or notifications regarding future planning updates. This will save time and energy for everyone. Please send your email address to us at or100mb@blm.gov, and indicate that you would like to help us conserve natural resources by receiving future Planning Updates electronically. If you choose not to respond, you will remain on our current postal mailing list. Thank you!*

Key Contact

For more information about projects in the Quarterly Planning Update, contact Bob Hall, Public Affairs Officer at (541) 464-3245.

Non-Discretionary Actions Under Reciprocal Right-of-Way Agreements

A reciprocal right-of-way agreement is a document exchanging access rights between BLM and a permittee pursuant to 43 CFR 2812 regulations. BLM has 140 individual agreements and easements that were executed prior to the implementation of the Roseburg District Record of Decision and Resource Management Plan (ROD/RMP p. 71). These 140 agreements are subject to regulations in effect at the time the agreements were executed or assigned. The BLM's discretion on activities pursuant to these agreements (such as road construction) is limited to that described in the agreement itself.

South River Field Office

- **Seneca Jones Timber Company, Reciprocal Right-of-Way Agreement R-656** – Construction of 400 feet of road and clearing of 2.6 acres of second-growth timber for a yarding wedge on BLM-administered lands in the NE¹/₄NE¹/₄ of Section 7, T. 28 S., R. 3 W. allocated as General Forest Management Area.
- **Roseburg Resources Company, Reciprocal Right-of-Way Agreement R-851** – Construction of 136 feet of new road through second-growth timber on BLM-administered lands in Lot 9, Section 13, T. 29 S., R. 8 W. allocated as Connectivity/Diversity Block.

Swiftwater Field Office

- **Juniper Properties, Reciprocal Right-of-Way Agreement R-645P** - Open existing jeep road and existing road 23-6-12.0 segments G and E (approximately 3600 feet) for fire equipment access across BLM land in the SE¹/₄SE¹/₄ Section 11 and NW¹/₄NW¹/₄ Section 13, T. 23 S., R. 6 W., W.M. allocated as General Forest Management Area and Late-Successional Reserve.
- **Seneca Jones Timber Company, Reciprocal Right-of-Way Agreement R-913** - Construction of approximately 253 feet of new road across BLM administered lands in the SE¹/₄SE¹/₄ Section 1, T. 27 S., R. 3 W., W.M. allocated as Adaptive Management Area.
- **Seneca Jones Timber Company, Reciprocal Right-of-Way Agreement R-788** - Construction of approximately 75 feet of new road across BLM administered lands in Lot 4, Section 35, T. 24 S., R. 8 W., W.M. allocated as Late-Successional Reserve.

Categorical Exclusions

Categorical Exclusions are categories of actions determined to have no significant effect to the human environment, individually or cumulatively. As such, neither an EA nor an EIS is required (40 CRR 1508.4).

South River Field Office

None this past quarter.

Swiftwater Field Office

- **Millar Creek Apiary.** Allows use of logging landings as an apiary site. Twelve bee hives are enclosed within a five-strand bear proof, electric fence, measuring 30 feet by 30 feet. Sec. 26, T.25 S., R.02W. (OR-104-06-36).
- **Precommercial Thinning and Manual Release.** Precommercially thins timber stands ten to twenty years old to increase growing space for over-dense stands and removes competing vegetation from young conifer stands. Units are found throughout the Swiftwater Resource Area (OR-104-06-31). 822 acres are within Late-Successional Reserve, 869 acres within General Forest Management Areas, and 256 acres within Connectivity/Diversity Management Areas.
- **Rights-of-Way Grant OR 54381; Legal Access Driveway.** Authorizes the use of an existing driveway on public land as a secondary access to homesite. The road is approximately 220 feet long and 25 feet wide, containing 0.13 acres. Sec. 28, Lot 1, T.24 S., R.07W (OR-104-06-39).

New Projects

South River Field Office

Fruit Growers Reciprocal Right-of-Way Agreement

Description: Establishment of a new O&C reciprocal right-of-way agreement between the BLM and Fruit Growers Supply Company. The agreement would provide for use of existing roads under the control of the BLM, and construction of additional roads by Fruit Growers Supply Company over BLM-managed lands for the purpose of accessing three parcels of the company's holdings.

Location: Section 31 of T. 29 S., R. 4 W.; Section 36, T. 29 S., R. 5 W., Sections 21 and 22 of T. 29 S., R. 6 W.; and Sections 5 and 6 of T. 31 S., R. 5 W., W.M.

Issue Identification: December, 2006.

Analysis: Environmental Assessment.

Public Comment Period: Anticipated in March, 2007.

Decision Date: Anticipated in June, 2007.

Swiftwater Field Office

Hubbard Creek Road (19.1 Rd.) Improvement

Description: This is a Title II project. The 26-7-19.1 road would be improved to reduce sediment risk to aquatics. The improvement would include the realignment and resurfacing of 0.51 miles of road, surfacing an additional 0.72 miles of road, and replacing and/or installing additional culverts.

Location: Section 19 T.26S., R.07W., W.M.

Issue Identification: Anticipated November/December 2006.

Analysis: Anticipated in March 2007.

Public Comment Period: Anticipated in April 2007.

Decision Date: Anticipated in April 2007.

Millpond Recreation Maintenance Shop

Description: This project would build a new maintenance facility to replace the Rock Creek Shop. The old shop has had continuing problems with vandalism because of its isolated location. The new facility would be in the Millpond/lone Pine complex, where it could be monitored.

Location: Section 21 T.25S., R.02W., W.M.

Issue Identification: Anticipated December 2006.

Analysis: Anticipated at the end of December 2007.

Public Comment Period: Anticipated at the end of January 2007.

Decision Date: Anticipated at the end of February 2007.

Bell Mountain Commercial Thinning

Description: This project was analyzed as part of the Upper Umpqua Watershed Plan and Environmental Assessment. It involves the commercial thinning of approximately 155 acres of young managed stands in the General Forest Management Area and Connectivity/Diversity Land Use Allocations.

Location: Sections 14, 23, 26, & 27, T22S, R.7W, W.M.

Issue Identification: Covered under the Upper Umpqua Watershed Plan (EA # OR-104-02-09).

Analysis: Environmental Assessment completed.

Public Comment Period: Anticipated in December 2006.

Decision Date: Anticipated in January 2007.

Status of Previous Planning Update Action Items

South River Field Office

Note: Differences in 5th-field watershed and 6th-field subwatershed names from those identified in previous planning updates reflect changes in boundaries and naming. These changes do not change the project areas from those previously described.

South Fork Deer Creek O&C Permit

Description: Issuance of a temporary haul permit over BLM Road No. 28-4-5.1 and authorization to extend the existing road by approximately 1,550 feet to access adjoining private timber lands. This proposal was initially analyzed as the South Fork Middle Fork Deer Creek O&C Permit. The analysis was not carried forward, as identified in the Spring 2006 Planning Update, when the original proponent (Glide Lumber) was bought by Swanson Group who declined to pursue the application further. A new party has come forward with an application to build the road as previously proposed.

Location: NW¼NW¼, Section 5, T. 28 S., R. 4 W., W.M.

Issue Identification: Ongoing.

Analysis: Environmental assessment in progress.

Public Comment Period: Anticipated in December, 2006.

Decision Date: Anticipated in May, 2007.

Olalla-Lookingglass Commercial Thinning and Density Management

Description: Commercial thinning in the Matrix allocations, density management in Riparian Reserves associated with Matrix units, and density management in stands allocated as Late-Successional Reserves. Approximately 825 acres will be analyzed for treatment.

Location: Sections 21 and 27 of T. 28 S., R. 8 W.; Section 31 of T. 29 S., R. 7 W.; Sections 9 and 19 of T. 30 S., R. 7 W.; and Sections 1, 11, 13, 15, and 23 of T. 30 S., R. 8 W., W.M.

Issue Identification: Complete.

Analysis: Environmental Assessment.

Public Comment Period: Anticipated in December, 2006.

Decision Date: Three decisions are anticipated in fiscal years 2007 and 2008.

South Myrtle Creek Regeneration Harvest Plan

Description: Regeneration harvest of approximately 585 acres of mature and late-successional forest comprised of the previously sold but unawarded Buck Fever, Class of 98, Dream Weaver and Sweet Pea timber sales.

Location: Sections 29, 31, 32, 33, 34 and 36, T. 28 S., R. 3 W.; Section 7, T. 29 S., R. 2 W.; Sections 1, 3, 9 and 11, T. 29 S., R. 3 W.; Sections 15, 17 and 19, T. 29 S. R. 4 W.; and Section 25, T. 29 S., R. 5 W., W.M.

Issue Identification: Complete.

Analysis: Environmental Assessment in progress.

Public Comment Period: Uncertain at this time.

Decision Date: Decisions anticipated in fiscal year 2007.

Late-Successional Reserve #261 Density Management Project

Description: Density management on up to an estimated 900 acres of mid-seral forest stands allocated as Late-Successional Reserve, for the purpose of accelerating the development of late-successional forest habitat conditions.

Location: Section 17, T. 28 S., R. 8 W.; Sections 3, 15, 23 and 27, T. 29 S., R. 9 W.; and Sections 1 and 2, T. 30 S., R. 9 W., W.M.

Issue Identification: Complete.

Analysis: Environmental Assessment complete.

Public Comment Period: Completed.

Decision Date: Power Wagon Density Management was authorized on August 21, 2006, followed by Sherlock's Denn Density Management on September 26, 2006. Decisions on the remaining density management actions analyzed in the environmental assessment are anticipated in fiscal year 2007.

Myrtle Creek Commercial Thinning and Density Management

Description: Commercial thinning in mid-seral stands allocated to the General Forest Management Area, and density management in stands allocated to Connectivity/Diversity Blocks or as Riparian Reserves. Approximately 960 acres would be considered for treatment in the Myrtle Creek 5th-field watershed.

Location: Sections 17, 21, 33 and 35, T. 28 S., R. 3 W.; Section 21, T. 28 S., R. 4 W.; Sections 9, 11 and 21, T. 29 S., R. 3 W.; and Sections 1 and 3, T. 29 S., R. 4 W., W.M.

Issue Identification: Complete.

Analysis: Environmental Assessment complete.

Public Comment Period: Completed.

Decision Date: Decisions are anticipated in fiscal year 2008.

South River Restoration Programmatic Environmental Assessment

Description: The analysis considered a range of restoration projects that would be reasonably implemented over the next five years or longer. These projects fall into three basic categories: (1) non-commercial riparian vegetation treatments that could include tree girdling to create snags and down wood and conversion/release of alder-dominated stands in favor of a diverse mixture of longer-lived hardwood and conifer species, (2) road improvements and stream crossing replacements, and (3) stream restoration projects to provide grade control and create additional instream habitat structure.

Location: Various locations throughout the eight fifth-field watersheds encompassed by the South River Resource Area.

Issue Identification: Complete.

Analysis: Environmental Assessment complete.

Public Comment Period: Complete.

Decision Date: Decisions were issued for the replacement of stream-crossing culverts on a tributary to Holmes Creek, North Myrtle Creek and Beals Creek in the summer of 2005. Decisions were also issued for replacement of a culvert on West Fork Canyon Creek, and in-stream habitat restoration in Stouts Creek that was completed in the summer of 2006. Additional decisions will be forthcoming in fiscal year 2007 and beyond.

Can-Can Regeneration Harvest

Description: Regeneration harvest on approximately 489 acres within the Matrix. Three sales, Screen Pass, Hi-Yo Silver and Myrtle Morgan would yield an estimated 14-16 MMBF of timber.

Location: O'Shea Creek and Canyon Creek 6th-field subwatersheds in the South Umpqua River 5th field watershed, and the Judd Creek 6th field subwatershed in the Middle South Umpqua River 5th field watershed. Proposed units are located in T. 30 S., R. 4 W., Section 5; T. 30 S., R. 5 W., Sections 9, 10, 11 and 15; T. 31 S., R. 5 W., Sections 23 and 26; and T. 30 S., R. 6 W., Sections 13 and 25.

Issue Identification: Complete.

Analysis: Environmental Assessment complete.

Public Comment Period: Complete.

Decision Date: A decision for the Myrtle Morgan timber sale was issued on June 27, 2006, and for the Screen Pass timber sale on July 20, 2006. Authorization of the Hi-Yo Silver timber sales is anticipated in May of 2007.

Martin Creek Instream Restoration

Description: Placement of instream structures along a two mile stretch of Martin Creek, where it passes through lands owned by Roseburg Resources Company, and lands managed by the BLM. Structures consist of multiple logs and/or boulders, designed to aggrade the stream channel and provide pool habitat for resident and anadromous fish, and other aquatic organisms. The project will also, if funding can be secured, replace a stream-crossing culvert on BLM Road No. 32-7-1.2 that blocks access by fish to approximately one mile of habitat in a side tributary of Martin Creek.

Location: T. 31 S., R. 7 W., Section 35, and T. 32 S., R. 7 W., Sections 1 and 2.

Issue Identification: Complete.

Analysis: Environmental Assessment complete.

Public Comment Period: Complete.

Decision Date: All in-stream work is complete. No decision has been made on replacement of a stream-crossing culvert on Road No. 32-7-1.2.

Myrtle Creek Watershed Restoration

Description: The analysis identified a range watershed restoration projects that include the replacement of stream-crossing culverts that are at risk of failure and/or blocking passage to fish, road decommissioning, road upgrading, slide stabilization, and installation of in-stream structures to promote habitat complexity.

Location: Throughout the Myrtle Creek 5th Field Watershed.

Issue Identification: Complete.

Analysis: Environmental Assessment complete.

Public Comment Period: Complete.

Decision Date: No decisions for projects analyzed in this EA were issued in 2005 or are currently planned in 2006. Additional decisions for road improvements, road decommissioning and slide stabilization will be forthcoming in fiscal year 2007 and beyond.

South River Commercial Thinning 2000

Description: Commercial thinning and density management of approximately 300 acres in GFMA and Riparian Reserve land use allocations. The timber sales would be expected to yield approximately 3.3 MMBF.

Location: East Fork and Middle Fork Coquille River, South Umpqua River, and Middle South Umpqua River watersheds. Thinning units are located in T. 28 S., R. 8 W., Section 19; T. 29 S., R. 3 W., Sections 13 and 24; T. 30 S., R. 3 W., Sections 3 and 4; T. 29 S., R. 2 W., Section 19; and T. 30 S., R. 2 W., Section 9.

Issue Identification: Complete.

Analysis: Environmental Assessment complete.

Public Comment Period: Complete.

Decision Date: Decisions for Hurricane Ruby Commercial Thinning, Weaver Road Commercial Thinning, and Leave It to Weaver Commercial Thinning were previously issued. The three remaining units analyzed (E1, E2 and E4) will be revisited in a new analysis planned for later in fiscal year 2007.

Swiftwater Field Office

Swiftwater/Lone Rock Tie Road (aka Swiftwater Tie Road Realignment)

Description: This is a Title II project. The 26-3-15.0 road is closed due to a small landslide that removed a section of the road in 1996. The road would be repaired by realignment onto stable ground immediately adjacent to the existing location. The landslide and the existing failure would be stabilized in the General Forest Management Area.

Location: Section 11, T.26S., R.03W., W.M.

Issue Identification: Anticipated late November 2006.

Analysis: Anticipated in December 2006.

Public Comment Period: Anticipated in March 2007.

Decision Date: Anticipated in April 2007.

Umpqua Basin Tree Revetment

Description: This is a Title II project on non-BLM administered lands. This project provides for the installation of 7 to 10 tree revetments in various streams throughout the County. Willows and other riparian vegetation would be established for long term bank stability and habitat improvement.

Location: Various streams on non-BLM administered lands within the Roseburg BLM District boundary.

Issue Identification: Completed.

Analysis: Anticipated in November FY2007.

Public Comment Period: Anticipated in December FY2007.

Decision Date: Anticipated in December FY2007.

Buck Creek Commercial Thinning

Description: Commercial Thinning of approximately 324 acres of second-growth timber, on Matrix lands. This was a previously sold but unawarded timber sale of the same name.

Location: Sections 3, T22S, R4W, W.M.

Issue Identification: Completed.

Analysis: Environmental Assessment completed.

Public Comment Period: Completed.

Decision Date: Completed. Anticipate award December 2006.

Johnson Creek Commercial Thinning

Description: Commercial Thinning of approximately 296 acres of second-growth timber, on Matrix lands. This was a previously sold but unawarded timber sale of the same name.

Location: Sections 2, 9, 11, and 15, T21S, R7W, W.M.

Issue Identification: Completed.

Analysis: Environmental Assessment completed.

Public Comment Period: Completed.

Decision Date: Completed. Anticipate award in December 2006.

Foghorn Cleghorn Commercial Thinning

Description: Commercial Thinning of approximately 386 acres of second-growth timber, on Matrix lands. This was a previously sold but unawarded timber sale of the same name.

Location: Sections 2, 3, 4, and 5, T21S, R7W, W.M.

Issue Identification: The sale is under protest. If the protest is resolved through negotiated process the sale could be awarded.

Analysis: Environmental Assessment completed.

Public Comment Period: Complete.

Decision Date: Anticipate decision and award in December 2006.

Happy Summit Density Management

Description: Density management of approximately 391 acres of second-growth timber, in the Late-Successional Reserve Land Use Allocation. This was a previously sold but unawarded timber sale of the same name.

Location: Sections 1, 11, and 12, T21S, R6W; Sections 25 and 35, T20S, R6W, W.M.

Issue Identification: The sale is under protest. If the protest is resolved through negotiated process the sale could be awarded.

Analysis: Environmental Assessment completed.

Public Comment Period: Completed.

Decision Date: Anticipate decision and award in December 2006.

Yoncalla West Regeneration Harvest

Description: Regeneration harvest of approximately 27 acres of mature and late-successional forest in the General Forest Management Area Land Use Allocation. This was a previously sold but unawarded sale of the same name.

Location: Sections 33, T22S, R5W, W.M.

Issue Identification: Completed.

Analysis: Environmental Assessment completion in November 2006.

Public Comment Period: Anticipated in November/December 2006.

Decision Date: Anticipated in January 2007 and award by February 2007.

Diamondback Regeneration Harvest

Description: Regeneration harvest of approximately 64 acres of mature and late-successional forest in the General Forest Management Area Land Use Allocation. This was a previously sold but unawarded sale of the same name.

Location: Section 17, T24S, R6W, W.M.

Issue Identification: Completed.

Analysis: Environmental Assessment anticipated March 2007.

Public Comment Period: Anticipated in May 2007.

Decision Date: Anticipated in June 2007.

Bare Cupboard Commercial Thinning and Density Management

Description: This project was analyzed as part of the Upper Umpqua Watershed Plan and Environmental Assessment. It involves the commercial thinning and density management of approximately 320 acres of young managed stands in the General Forest Management Area and Riparian Reserve Land Use Allocations.

Location: Sections 19, T26S, R.7W, W.M.

Issue Identification: Covered under the Upper Umpqua Watershed Plan (EA # OR-104-02-09).

Analysis: Environmental Assessment completed.

Public Comment Period: Anticipated in December 2006.

Decision Date: Anticipated at the end of December 2006.

Boss Day Raider Density Management

Description: This project was analyzed as part of the Upper Umpqua Watershed Plan and Environmental Assessment. It involves the density management of approximately 440 acres of young managed stands in the Late-Successional Reserve Land Use Allocation.

Location: Section 1, T24S, R08W, W.M.

Issue Identification: Covered under the Upper Umpqua Watershed Plan (EA # OR-104-02-09).

Analysis: Environmental Assessment completed.

Public Comment Period: Anticipated in March 2007.

Decision Date: Anticipated in April 2007.

State Indemnity Selection (aka – In-Lieu Selections)

Description: The Congress conveyed lands to the State of Oregon, upon its statehood, in 1859. Not all lands were available for conveyance and this project will partially fulfill the United State's obligation to the State of Oregon by conveying approximately 180 acres of public lands to state control. Lands would be selected from the following 10 parcels.

Location: Parcel 1 – SE $\frac{1}{4}$ NE $\frac{1}{4}$, Section 32, T20S, R6W, WM. (40 ac.);
Parcel 2 – Govt. Lot 7 and SE $\frac{1}{4}$ SW $\frac{1}{4}$, Section 6, T21S, R6W, WM. (64.54 ac.);
Parcel 3 – NE $\frac{1}{4}$ SE $\frac{1}{4}$, Section 10, T21S, R7W, WM. (40 ac.);
Parcel 4 – NE $\frac{1}{4}$ SE $\frac{1}{4}$, Section 34, T22S, R4W, WM. (40 ac.);
Parcel 5 – Govt. Lot 1, Section 28, T22S, R7W, WM. (39.06 ac.);
Parcel 6 – SE $\frac{1}{4}$ NE $\frac{1}{4}$ and NE $\frac{1}{4}$ SE $\frac{1}{4}$ Section 26, T22S, R7W, WM. (80.45 ac.);
Parcel 7 – NW $\frac{1}{4}$ SE $\frac{1}{4}$, Section 4, T23S, R4W, WM. (40 ac.);
Parcel 8 – NE $\frac{1}{4}$ NE $\frac{1}{4}$, Section 24, T23S, R7W, WM. (40 ac.);
Parcel 9 – SE $\frac{1}{4}$ SE $\frac{1}{4}$, Section 32, T25S, R3W, WM. (40 ac.); and/or
Parcel 10 – SE $\frac{1}{4}$ SE $\frac{1}{4}$, Section 14, T25S, R7W, WM. (40 ac.)

Issue Identification: This project was identified by the Oregon State Office as high priority for conveyance to the State of Oregon and the Oregon Division of State Lands to resolve indemnity/in-lieu selections and issues in accordance with the 1991 court settlement.”

Analysis: Received an amended application from the State of Oregon in July 2006. Anticipate a completed EA in November 2006.

Public Comment Period: Anticipated in November/December 2006.

Decision Date: Anticipated in December 2006/January 2007.

Whatagas Regeneration Harvest

Description: Regeneration harvest of mature and late-successional forest totaling approximately 115 acres. The sale is expected to yield approximately 3.3 million board feet and is within the General Forest Management Area and Connectivity/Diversity block Land Use Allocations.

Location: Section 7 and 19; T25S, R3W; and Section 13, T25S, R4W, Section 7, T31S, R3W, W.M.

Issue Identification: Completed.

Analysis: Environmental Assessment Completed.

Public Comment Period: Completed.

Decision Date: August 17, 2006. Protested.

Broken Buck Regeneration Harvest

Description This project was analyzed and a Decision Document signed in 1997. Operations for this sale have been suspended since 1998 as a result of a series of law suits. One of the law suits resulted in a court order that invalidated the Biological Opinion of the National Marine Fisheries Service that covered this project, which put it out of compliance with the Endangered Species Act. All of the legal issues surrounding this sale have been resolved. A new Environmental Assessment is needed and will be prepared as well as another decision will be made that may enable BLM to lift the suspension and allow operations to commence on this sale. This project is found in the Connectivity/Diversity Block.

Location: Section 9, 17, T23S, R6W, W.M

Issue Identification: Completed.

Analysis: Anticipated in April 2007.

Public Comment Period: Anticipated in September 2007.

Decision Date: Anticipated November 2007.

North Bank Habitat Management Area Projects/Implementation Plan

Description: Mowing of roads and trails will be done as soils dry. Development and maintenance of springs and water sources will begin and continue through the summer. Trail signs will be installed across the NBHMA. Planting of willow cuttings and shrubs along streams where blackberries have been removed will continue as the weather permits. Youth crews will be removing noxious weeds at various locations throughout the spring and summer. The main gate will be moved up away from the County Road for public safety. Fuel treatment is planned for approximately 650 acres followed by seeding.

Location: Sections 31, 32, 33, T25S, R4W, W.M.; Sections 35, 36, T25S, R5W, W.M.; Sections 1, 2, 11, 12, 13, 14, T26S, R5W, W.M. and Sections 4, 5, 6, 7, 8, T26S, R4W, W.M.

Issue Identification: Completed

Analysis: Covered under the North Bank Habitat Management Area / ACEC Final EIS (September 2000)

Public Comment Period: Completed in September 2000

Decision Date: September 2000

Deferred Analyses

The following projects are not presently considered action items. Further work on the environmental assessments has been deferred. At such time as analysis is resumed, it will be noted in the Planning Update.

South River Field Office

It is not envisioned that the following timber sale analyses will be resumed. Consequently, reference to these specific proposals will not appear in future planning updates. Individual components of these discontinued analyses may, however, be addressed in future proposals.

N. Olalla-Lookingglass Regeneration Harvest
Middle South Umpqua/Olalla-Lookingglass Regeneration Harvest
Loose Laces
Ragu
South River FY 2001 Regeneration Harvest Project Plan

Swiftwater Field Office

Bear Hill Regeneration Harvest
Bell Mountain Regeneration Harvest
Elk Creek Watershed Plan Environmental Assessment
Powell Creek Regeneration Harvest

Watershed Analysis Status

South River Field Office

No watershed analysis is being conducted at this time.

Swiftwater Field Office

Rock Creek Region Watershed Assessment

The Swiftwater Field Office partnered with the Partnership for the Umpqua River to develop an assessment and watershed restoration plan for the Rock Creek Region. This included the Rock Creek and Canton Creek fifth-field watersheds and the Middle North Umpqua from the confluence of Steamboat Creek - North Umpqua to the confluence of Rock Creek - North Umpqua. the Assessment was completed in the Spring 2006.

Volunteer Opportunities

The Roseburg District has specific volunteer opportunities listed on-line at volunteer.gov/gov. Please call District Volunteer Program Coordinator Joe Ross at 464-3248 for further details.

November 18, 2006 National Family Volunteer Day http://www.pointsoflight.org/programs/seasons/nfvd

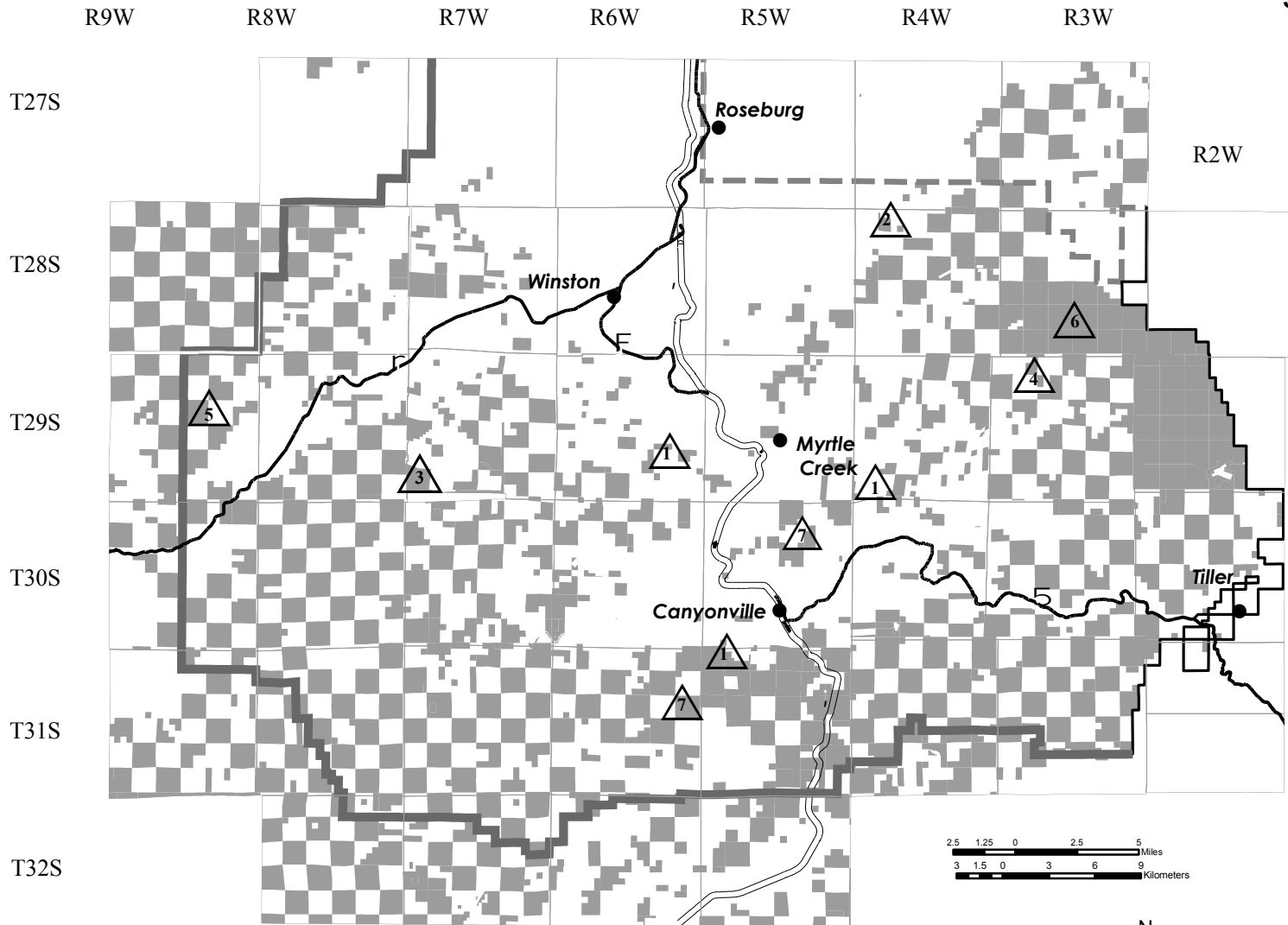


South River Field Office Planning Update

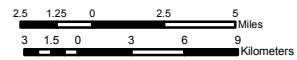
U.S. DEPARTMENT OF THE INTERIOR
Bureau of Land Management

South River Field Office
Roseburg District

Winter 2006



- Legend**
- Towns
 - ══ Interstate 5
 - ══ Oregon State Highway
 - BLM Managed Land
 - ▬ Roseburg District Boundary
 - ▬ Resource Area Boundary
 - ▬ National Forest Boundary



- | | | | |
|----|---|----|---|
| △1 | Fruit Growers Reciprocal Right-of-Way Agreement | △4 | South Myrtle Regeneration Harvest Plan |
| △2 | South Fork Deer Creek O&C Permit | △5 | Late-Successional Reserve #261 Density Management |
| △3 | Olalla-Lookinglass Commercial Thinning and Density Management | △6 | Myrtle Creek Commercial Thinning and Density Management |
| | | △7 | Can-Can Regeneration Harvest Plan |



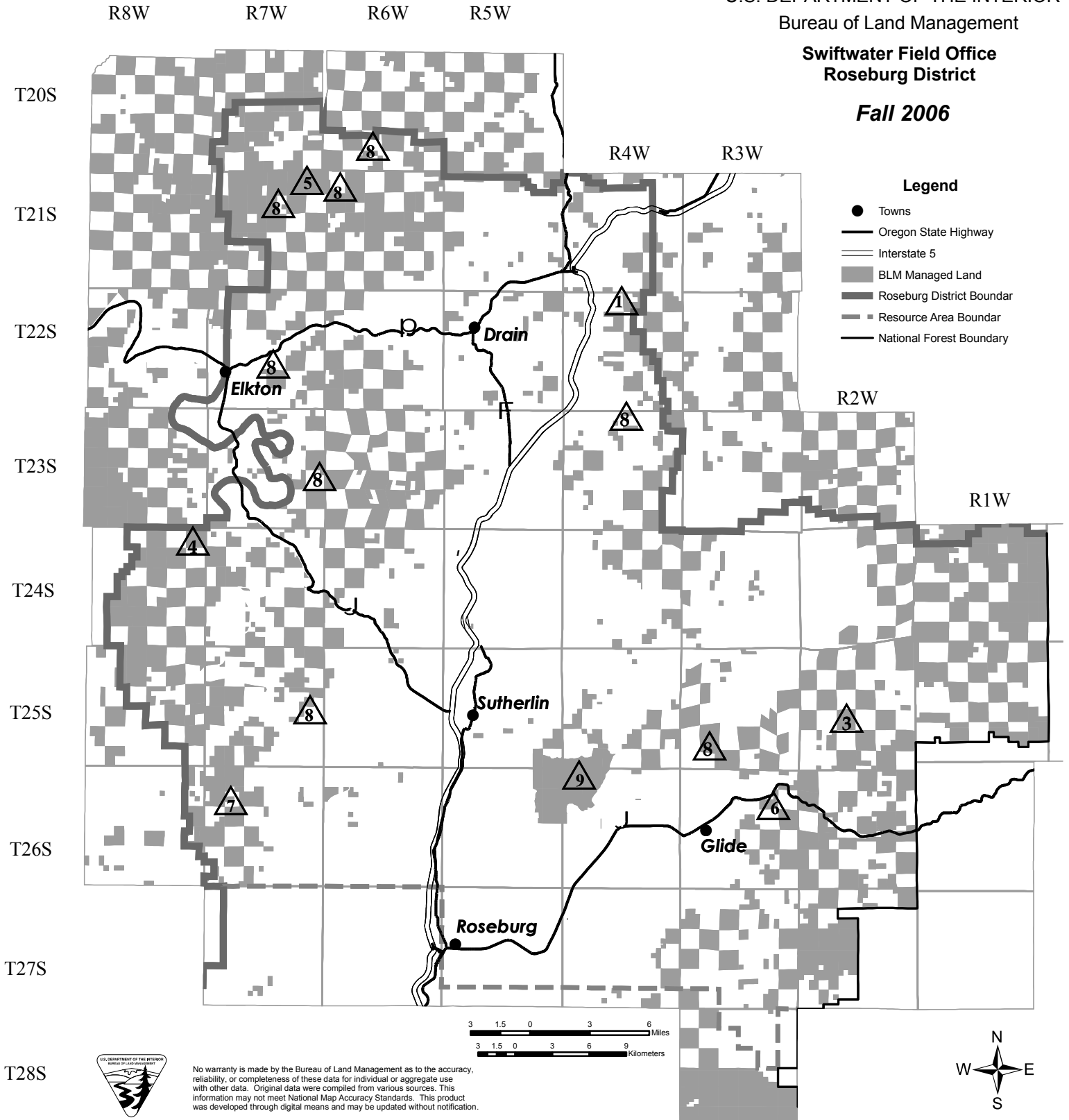
No warranty is made by the Bureau of Land Management as to the accuracy, reliability, or completeness of these data for individual or aggregate use with other data. Original data were compiled from various sources. This information may not meet National Map Accuracy Standards. This product was developed through digital means and may be updated without notification.

Swiftwater Field Office Planning Update

U.S. DEPARTMENT OF THE INTERIOR
Bureau of Land Management

Swiftwater Field Office
Roseburg District

Fall 2006



- 1 Buck Creek Commercial Thinning
- 2 Bare Cupboard Commercial Thinning
- 3 Millpond Recreation Maintenance Shop
- 4 Boss Day Raider Density Management
- 5 Johnson Creek Commercial Thinning

- 6 Swiftwater/LoneRock Tie Road
- 7 Hubbard Creek Road (19.1) Improvement
- 8 State of Oregon In-Leiu Selection
- 9 North Bank Habitat Management Area



Abbreviations and Definitions

ACEC/RNA – Area of Critical Environmental Concern/Research Natural Area

BO - Biological Opinion.

CX or Categorical Exclusion - Actions which do not have significant effects on the environment and for which an Environmental Analysis (EA) or an Environmental Impact Statement (EIS) is not required.

EA - Environmental Assessment – This is a concise public document that briefly provides evidence and analysis of a proposed Federal action. It is used to determine whether further analysis needs to be done for an Environmental Impact Statement (EIS) or a Finding of No Significant Impact (FONSI).

FONSI - Finding of No Significant Impact - This is a document that briefly presents the reasons why the implementation of an action will not result in “significant” environmental impacts (effects) beyond those already addressed in the Roseburg District’s *Proposed Resource Management Plan / Environmental Impact Statement* (PRMP/EIS, October 1994).

GFMA – General Forest Management Area.

IDT - Interdisciplinary Team - A team is a group of resource specialists, whose participation is determined by the issues relating to the project proposal, and who conduct environmental analysis.

LSR – Late-Successional Reserves - One of the seven Federal land designations set forth in the Northwest Forest Plan. These reserves will maintain a functional, interactive, late-successional and old-growth forest ecosystem. Approximately 81% of the Roseburg District BLM is reserve.

Matrix Lands - One of the seven Federal land designations set forth in the Northwest Forest Plan. Most timber harvest contributing to the Allowable Sale Quantity takes place in this area. Approximately 19% of the Roseburg District BLM is matrix.

MBF - Thousand board feet.

MMBF - Million board feet.

NEPA - National Environmental Policy Act - A federal law which sets the systematic interdisciplinary analysis to achieve integrated consideration of physical, biological, economic, and other sciences to provide for an informed decision. The process provides for public participation in the development, review and revision of certain activities on Federal Lands.

NWFP - Northwest Forest Plan - A common name for the Record of Decision for Amendments to Forest Service and Bureau of Land Management Planning Documents Within the Range of the Northern Spotted Owl (April 1994). It is also used to refer to the Standards and Guidelines for Management of Habitat for Late-Successional and Old Growth Forest Related Species with the Range of the Northern Spotted Owl which accompanies the Record of Decision.

O&C Lands - Revested Oregon and California Railroad Lands.

Resource Management Plan (RMP) - A land use plan prepared by the BLM in accordance with the Federal Land Policy and Management Act (FLPMA).

Scoping - An early and open part of environmental analysis that allows interested public and other Federal, state and local agencies the opportunity to provide issues, concerns and opportunities relative to proposed project actions. Scoping is required by regulation for Environmental Impact Statements.