

NEWSRelease

BUREAU OF LAND MANAGEMENT

100 Oregon Street • Vale, Oregon 97918 • <http://www.blm.gov/or/districts/vale>

News Release: OR-030-2009-006

For Immediate Release

March 20, 2009

News Contact: Mark Wilkening, (541) 473-6218

Snively Hot Springs Closed from Sunset to Sunrise

VALE, OREGON-The Bureau of Land Management, Vale District gave notice today that they are temporarily closing Snively Hot Springs to all entry from sunset to sunrise effect immediately. The closure will remain in effect from March 20, 2009 to March 20, 2011 or until the Owyhee River Below the Dam Activity Plan is completed.

The closure is the minimum action needed to provide visitor safety and protection of the site's resource values. The site has been subject to an increased level and frequency of unlawful and inappropriate activities including but not limited to disorderly conduct, assaults, and illegal use of alcohol and illicit drugs. Unattended campfires have escaped resulting in destruction of riparian vegetation.

The site will remain open during daylight hours and visitors are welcome. The area is an undeveloped hot springs site though the public has placed rocks in the Owyhee River to create soaking pools. Other restrictions which apply are: no camping or fires are allowed at anytime and glass bottles and containers are not allowed within 30 feet of the hot spring pools.

Unfortunately, the public has continued to ignore these restrictions and citations have been handed out by District Law Enforcement Rangers. "Whether it is a group or a single individual, if you violate any of the restrictions for this area, each person at a minimum will receive a citation" stated Lynn Miracle Vale District Law Enforcement Ranger. "We will be stepping up patrols at Snively Hot Springs to enforce the closure". Signs have been re-posted in the area informing the public of the restrictions.

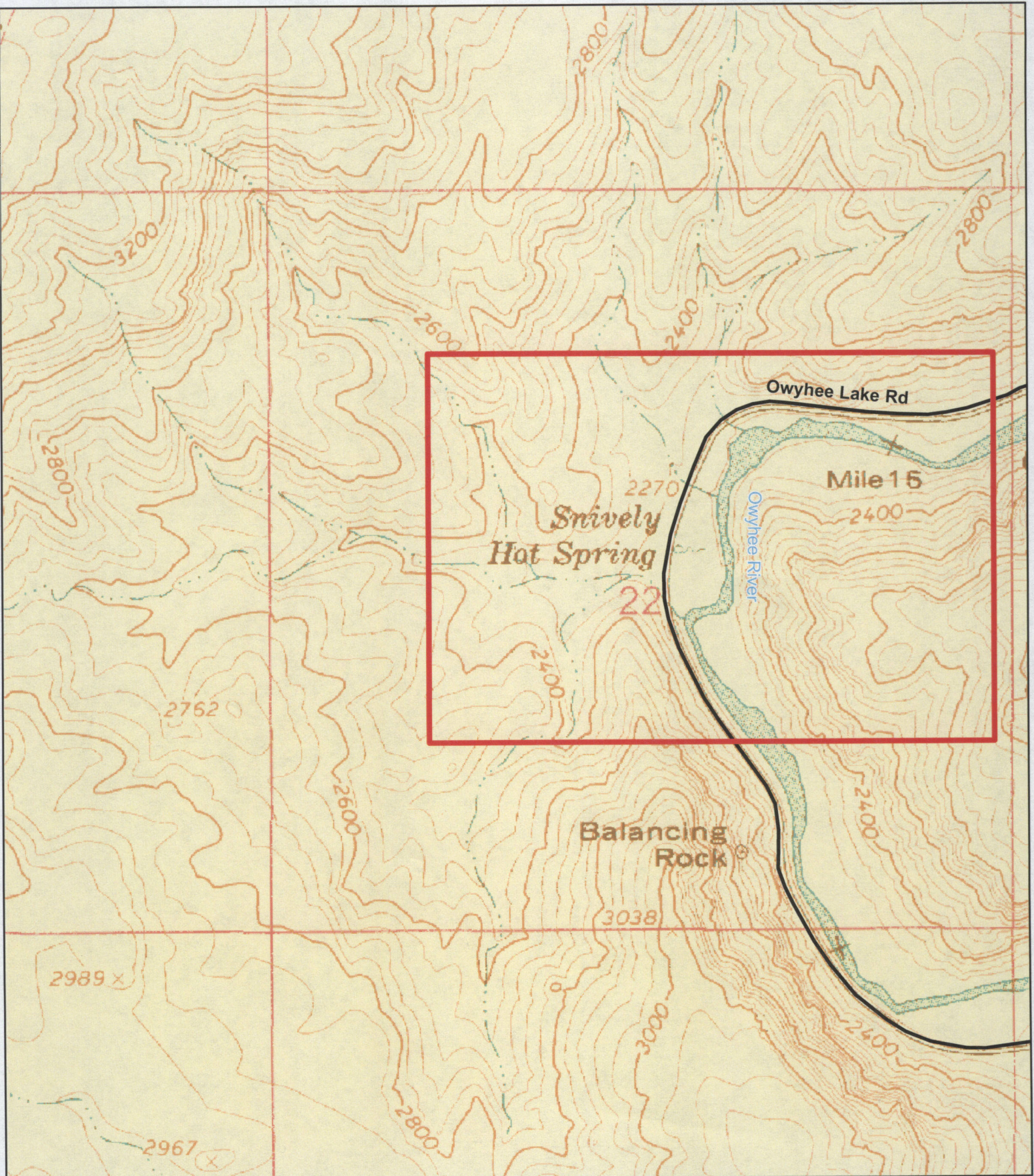
For additional information please contact Mark Wilkening, Public Affairs Officer for the Vale District at 541-473-6218 or visit the District website at www.blm.gov/or/districts/vale.

-BLM-




The BLM manages more land – 258 million acres – than any other Federal agency. This land, known as the National System of Public Lands, is primarily located in 12 Western States, including Alaska. The Bureau, with a budget of about \$1 billion, also administers 700 million acres of sub-surface mineral estate throughout the nation. The BLM's multiple-use mission is to sustain the health and productivity of the public lands for the use and enjoyment of present and future generations. The Bureau accomplishes this by managing such activities as outdoor recreation, livestock grazing, mineral development, and energy production, and by conserving natural, historical, cultural, and other resources on public lands.

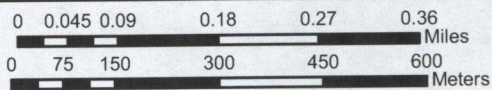
BLM
Vale District Office



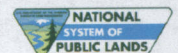


Legend

-  County Road
-  Bureau of Land Management
-  Closure Area



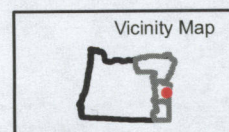
U.S. Department of Interior
Bureau of Land Management



Vale District

March 20, 2009

No warranty is made by the Bureau of Land Management as to the accuracy, reliability, or completeness of these data for individual or aggregate use with other data. Original data were compiled from various sources and may be updated without notification.



Closure of Snively Area
T.21S., R.45E., Section 22:
S1/2NE1/4, SE1/4NW1/4, NE1/4SW1/4, N1/2SE1/4