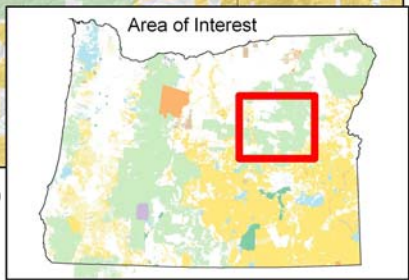
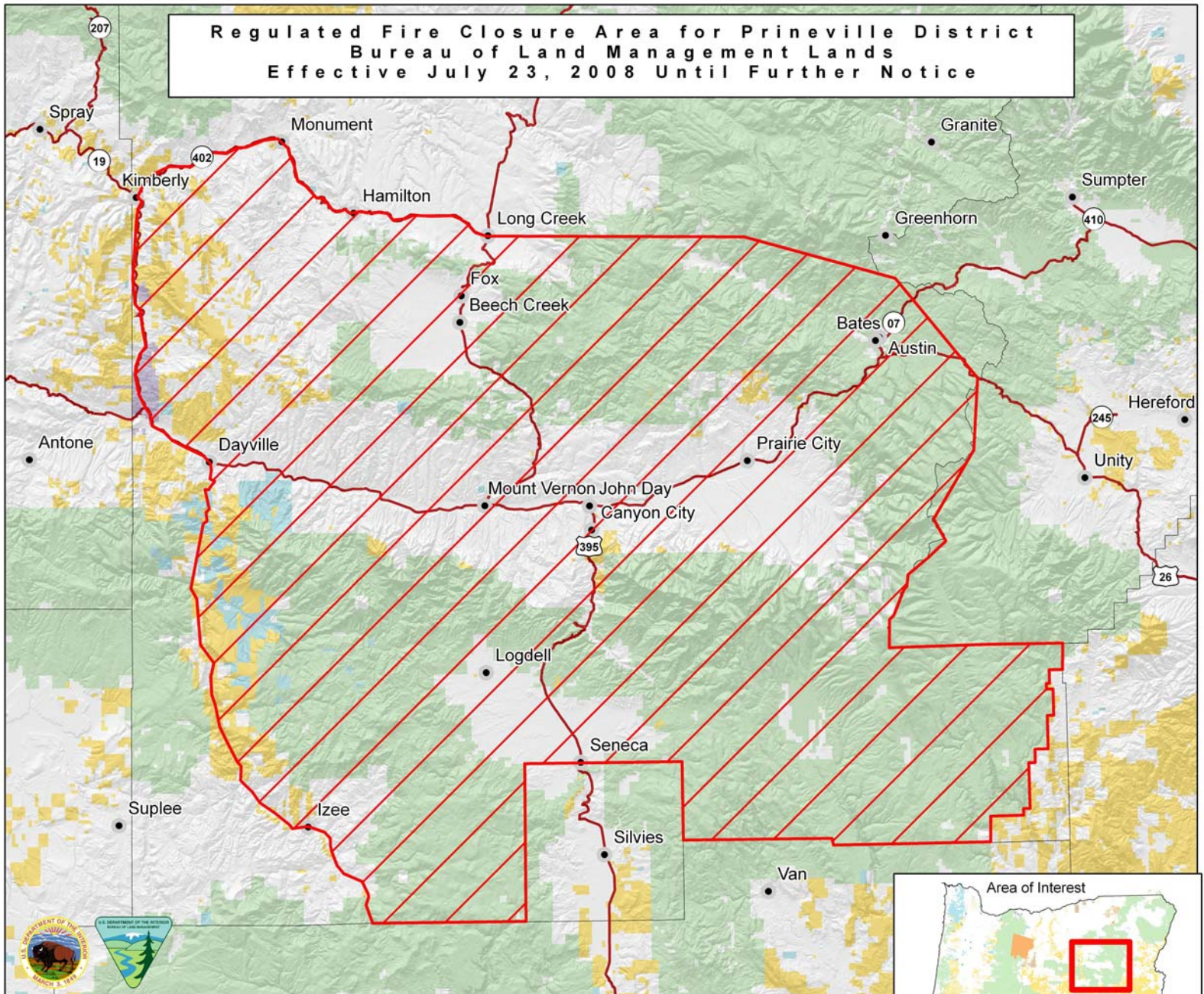


**Regulated Fire Closure Area for Prineville District
Bureau of Land Management Lands
Effective July 23, 2008 Until Further Notice**



- Area of Temporary Restrictions
- Bureau of Land Management
- U.S. Forest Service
- National Park Service
- State
- Local Government
- Private/Unknown
- Cities
- Major Highways
- County Boundaries

For More Information, Contact Prineville District at (541) 416-6700

N
W — E
S
0 5 10 20
Miles

No warranty is made by the Bureau of Land Management as to the accuracy, reliability, or completeness of these data for individual or aggregate use with other data. Original data were compiled from various sources and may be updated without notification.