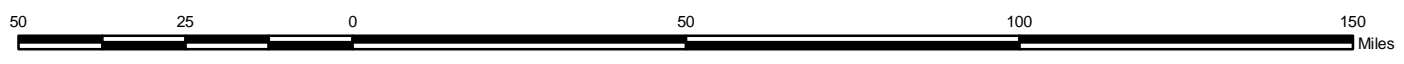
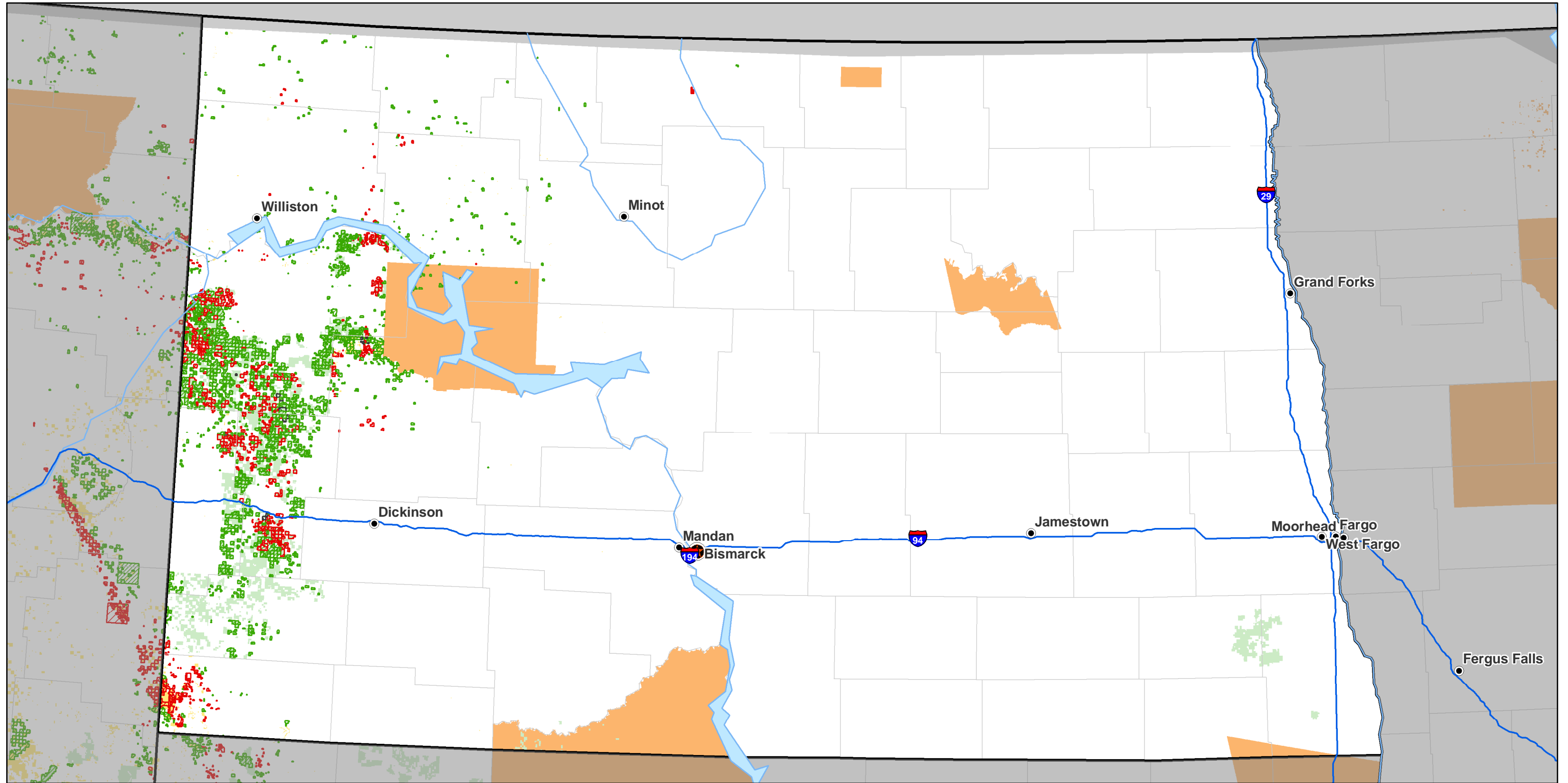


# FEDERAL OIL AND GAS LEASES FOR NORTH DAKOTA



**LEGEND**

<b>Oil &amp; Gas Leases</b>	<b>Surface Management Agency</b>
Producing Oil & Gas Leases	BLM
Non Producing Oil and Gas Leases	BIA
Suspended Oil and Gas Leases	USFS
<b>Generalized reference layers provided by ESRI Data &amp; Maps, 2004</b>	
Rivers	State Capital
County Boundaries	Cities (Population > 10,000)
State Boundaries	Major Highways

This map was generated from cases that are in LR2000. Data that is missing from LR2000 will not be displayed. Cases were matched with polygons from the NILS Land Description fabric and Parcel Fabric Alternate source. Some cases can not be displayed due to missing geometry.

Map produced by BLM National Applications, OC-3020  
 Publication Date: January 16, 2008



No warranty is expressed or implied as to the accuracy, reliability, and completeness of these data for individual use or aggregate use with other data. Original data were compiled from various sources. Spatial information may not meet National Map Accuracy Standards. This information may be updated without notification.

GeoCommunicator ([www.GeoCommunicator.gov](http://www.GeoCommunicator.gov)) is a Website for the distribution of spatial data from the U.S. National Integrated Land System and the Bureau of Land Management's Legacy Rehost System (LR2000). The Bureau of Land Management (BLM), an agency in the Department of Interior, is responsible for cadastral survey, land and mineral use authorization, and resource management on public lands in the United States. The National Integrated Land System (NILS) is a joint development project between the BLM and U.S. Forest Service conducted in partnership with states, counties, and private industry to provide a comprehensive solution to integrate survey data with parcel-based land records in an enterprise GIS environment. As part of the BLM's E-Government efforts and with the development of NILS, spatially displaying parcel data from many of the BLM's computer applications is becoming a reality.