

## 7. Rates and Price Indices

This section contains information on telephone price indices and rate levels.<sup>1</sup> It describes and presents a series of price indices maintained by the Bureau of Labor Statistics (BLS). It also discusses rate levels and changes in average rate levels.

### Telephone Service Price Indices

The BLS collects a variety of information on telephone service as part of three separate programs -- the Consumer Price Index (CPI), the Producer Price Index (PPI), and the Consumer Expenditure Survey. They can be found on the Internet at <[www.bls.gov/data](http://www.bls.gov/data)>. The monthly price indices represent prices sampled in the middle of the month.

A Consumer Price Index for telephone services was first published in 1935.<sup>2</sup> Since that time, telephone prices have tended to increase at a slower pace than most other prices. Table 7.1 shows long-run changes in the Consumer Price Indices for all items, all services, telephone services, each of the seven major categories that currently constitute the overall CPI, and several services that are often characterized as public utilities.<sup>3</sup> The price of telephone service has increased less rapidly than the prices of most of these categories when viewed over a long period of time. Chart 7.1 shows the levels of the overall CPI and the CPI for telephone services over time.

The CPI index of telephone services is based on a "market basket" intended to represent the telephone-related expenditures of a typical urban household. It includes both local and long distance services. The annual rate of change during recent years is shown in Table 7.2 for the overall CPI (which measures the impact of inflation on consumers), and the CPI for telephone services. In addition, Table 7.2 shows the Gross Domestic Product chain-type price index (which reflects inflation throughout the economy) prepared by the Bureau of Economic Analysis. Chart 7.2 shows the changes in the overall CPI and the CPI for telephone services over time.

For 2002 the nation's overall level of prices (measured by the CPI for all items) rose by 1.6%. The CPI for telephone services rose by 0.4% during 2002. The CPI for telephone services is composed of three subindices. During 2002, the local service component (including subscriber line charges) rose by 4.5%, while the price index for interstate toll calls fell by 4.7%, and the price index for state toll calls fell by 3.7%. The changes in these subindices over time

- 
- 1 For more detailed information, see Industry Analysis and Technology Division, Wireline Competition Bureau, Federal Communications Commission, *Reference Book of Rates, Price Indices, and Household Expenditures for Telephone Service* (July 15, 2003). Much, but not all, of the material in this section is based on that report.
  - 2 BLS publishes two sets of Consumer Price Indices. The CPI-U, used herein, is based on expenditures of all urban consumers. The CPI-W series is based on expenditures of urban wage earners and clerical workers.
  - 3 Table 7.1 shows changes from 1936 because several of the indices in the table began in that year.

are shown in Chart 7.3.

The Bureau of Labor Statistics publishes a number of price indices related to local telephone service, two of which are important to the monitoring program. The CPI index of local telephone charges is based on a broadly defined "market basket" of local services that includes monthly service charges, message unit charges, leased equipment, installation, service enhancements (such as tone dialing and call waiting), taxes, subscriber line charges, and all other consumer expenditures associated with local telephone services except long distance charges. In contrast, the PPI index of monthly residential rates is much more narrowly defined. It is based only on monthly service charges for residential service, optional tone dialing service, and subscriber line charges. It excludes taxes and all other telephone service charges. The annual rates of change for these two indices are presented in Table 7.3.

CPI data are available for intrastate toll and interstate toll services since December 1977. Table 7.3 also presents the annual changes in these series for recent years.

Price indices are less reliable when industries are changing rapidly. For example, in 1992, long distance carriers began to increase basic long distance rates while at the same time greatly expanding their range of discount offerings aimed at medium and heavy users of long distance service. The fixed market basket of toll calls measured for the CPI did not fully reflect these discounts. In 1998, the CPI for telephone services was altered to include cellular telephone services, making the new index not directly comparable to prior years. In 1995, BLS made major changes to the PPI telephone series, and there are no data after July 1995 comparable with prior data. At that time the BLS introduced revenue-weighted telephone price indices. The new indices categorize the telephone industry into much finer detail, though the new series are not comparable to the old in many categories. Because of these sorts of difficulties, measures of average revenues are sometimes used as alternatives to price indices.

Monthly data for the new CPI telephone indices are shown in Table 7.4. The current PPI indices are shown in Table 7.5.<sup>4</sup>

### Information on Rate Levels

Local rates are regulated by state regulatory agencies and vary greatly from area to area. Characterization of any rate as "typical" is therefore difficult. Table 7.6 presents average local residential rates in urban areas. The price indices published by the BLS indicate percentage changes in the price of the telephone services. The BLS does not publish the actual level of rates. The averages shown in Table 7.6 are based on an FCC survey using the same sampling areas and weights used by the BLS in constructing the Consumer Price Index. In October 2002 the national average for the representative total residential service charge was \$23.38 monthly. The average charge for connecting new phone service was \$42.39.

Table 7.7 presents average monthly local rates for single-line business customers in urban

---

4 The discontinued Producer Price Indices through July 1995 can be found in Table 5.6 of the *Monitoring Report*, CC Docket No. 87-339, May 1997.

areas. Like the residential rates presented above, they are based on an FCC survey using the same sampling areas and weights used by the BLS in constructing the Consumer Price Index. In October 2002, the representative average monthly charge was \$43.59, while the average charge for connecting phone service was \$72.35. Table 7.8 presents comparable data for businesses with a key system line, showing an average representative monthly charge of \$49.94 in October 2002, and an average connection charge of \$174.35. Table 7.9 presents comparable data for businesses with a PBX trunk, showing an average representative monthly charge of \$53.98 in October 2002 and an average connection charge of \$173.83.

Basic schedule rates of AT&T, WorldCom (also known as MCI), and Sprint for representative directly dialed interstate long distance calls are shown on an annual basis for 1980 through 2002 in Table 7.10 for residential customers. Higher charges apply to other types of calls, such as those using operator assistance. Lower prices are available through calling plans and other volume discounts. Since 1984, as a result of telephone rates becoming less distance sensitive, basic schedule charges for directly dialed interstate calls have fallen for calls over longer distances and risen for calls over shorter distances.

Table 7.11 contains average revenue per minute for interstate calls. These estimates show that billed revenue per minute has declined over time for both international and domestic services.

#### Subscriber Line and Access Charges

Long distance companies rely on the loops, switches, and transport facilities of local telephone companies for access to their customers. As a result, local telephone companies recover a portion of their costs from long distance companies accessing their networks. Both the manner in which these access charges have been assessed and the proportion of the costs they have recovered have varied considerably over time.

In the early 1980s, AT&T provided about three-quarters of the nation's local telephone service and almost all interstate long distance service. Because revenue sharing was largely an internal process for AT&T, it was able to charge prices above cost for long distance calls and share the revenues with local telephone companies. These transfers, while reducing the pressures on the local companies to raise monthly local rates, contributed to inefficiently high long distance rates. The high rates were responsible for suppressing demand for long distance calls and inducing large corporations to bypass the public switched network. Moreover, while such revenue sharing arrangements were sustainable in an industry where one firm monopolized both long distance and local service, they were not compatible with a competitive long distance industry.

In mid-1984, the FCC, in cooperation with a Federal-State Joint Board comprised of both federal and state regulators, introduced sweeping changes to the way that local companies charged for their services. The historic method of sharing revenues was replaced with a new system of access charges that provided a uniform method for local telephone companies to charge for the origination and termination of interstate traffic on their local networks. In particular, monthly subscriber line charges (SLCs) were introduced to recover a portion of the fixed costs of the local telephone companies' loops directly from end users on a per-line basis.

Since local telephone companies were required to reduce their charges to long distance carriers -- dollar for dollar -- the introduction of SLCs permitted reductions in implicit subsidies from long distance service to local service. The rebalancing of prices between local service and interstate long distance calls during the 1980s had a fundamental impact on the telephone industry as the price of long distance service fell and the volume of long distance calling surged.

In mid-1997, as part of its implementation of the 1996 Telecommunications Act, the FCC introduced further interstate access charge reform. Presubscribed interexchange carrier charges (PICCs) were created in order to allow local carriers to recover the remaining portion of their fixed loop costs from long distance carriers on a per-line, instead of a per-minute, basis. A further access charge reform was adopted on May 31, 2000, which eliminated the PICC and consolidated it with the SLC. This took effect on July 1, 2000.<sup>5</sup>

Average monthly SLCs and PICCs are shown in Table 7.12 and average per-minute rates charged to long distance carriers are shown in Table 7.13. Both tables report historical averages for all local exchange carriers (LECs) that file access tariffs subject to price-cap regulation and LECs in the National Exchange Carrier Association (NECA) pool. These LECs control over 98% of the industry's regulated access lines. Current per-line charges and per-minute charges are reported for each of the carriers in Tables 7.14 and 7.15, respectively.

The averages in Table 7.13 clearly illustrate the effectiveness of access reform in reducing the prices long distance carriers pay per minute for access to the local telephone companies' networks. The reductions in per-minute access prices over time have been a major contributing factor to reductions in long distance prices.

---

5 Although the changes took effect on July 1, some companies made subsequent adjustments to their tariffs, which did not take effect until August 11.

**Table 7.1**  
**Long-Term Changes for Various Price Indices**  
**(Average Annual Rates of Change)**

	1936 - 2002	1990 - 2002
CPI All Items	4.0 %	2.5 %
CPI All Services	4.4	3.4
CPI Telephone Services **	1.9	0.8
CPI Major Categories:		
- Food & Beverages	*	2.4
- Housing	*	2.8
- Apparel	2.7	-0.3
- Transportation	3.7	1.6
- Medical Care	5.2	4.6
- Recreation ***	*	1.7
- Other Goods & Services	*	4.1
CPI Public Transportation	4.9	2.3
CPI Utility Natural Gas Service	3.8	3.2
CPI Electricity	2.3	1.2
CPI Sewer & Water Maintenance	*	4.0
CPI Postage	4.2	3.6

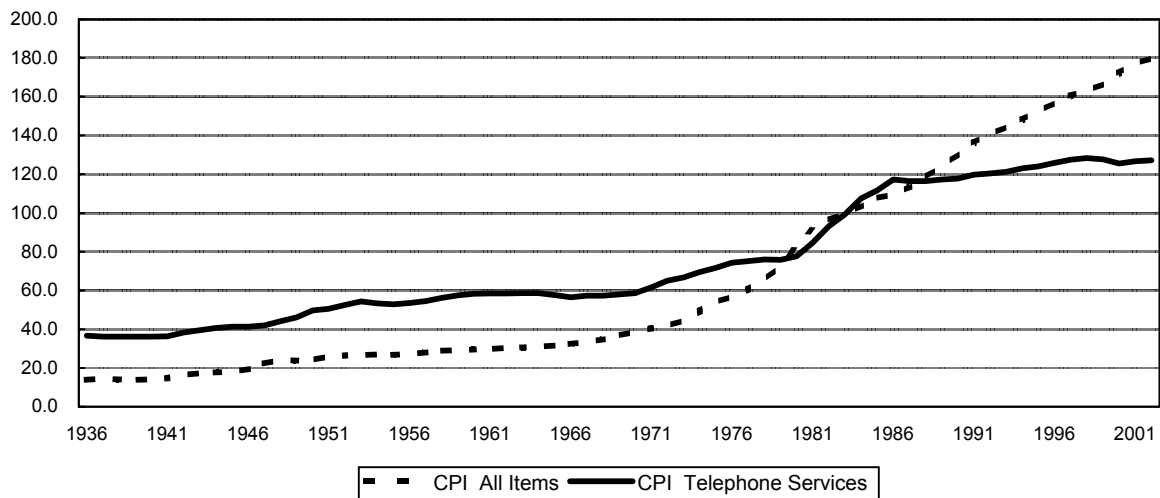
Note: All figures represent average annual rates of change in the December index values.  
 \* Series not established until after 1936.  
 \*\* The CPI telephone service index was revised in December of 1997.  
 \*\*\* Series not established until 1993. Figure reflects annual change between 1993 and 2002.

Source: Bureau of Labor Statistics.

**Chart 7.1**

**CPI All Items and CPI Telephone Services**

1982 - 1984 = 100

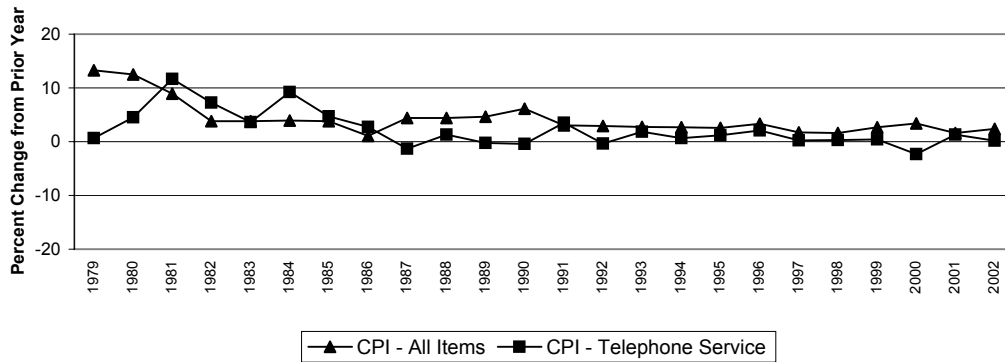


**Table 7.2  
Annual Changes in Major Price Indices**

	GDP Chain-Type Price Index	CPI - All Items	CPI - Telephone Services
1978	7.1 %	9.0 %	0.9 %
1979	8.3	13.3	0.7
1980	9.2	12.5	4.6
1981	9.3	8.9	11.7
1982	6.2	3.8	7.2
1983	3.9	3.8	3.6
1984	3.7	3.9	9.2
1985	3.2	3.8	4.7
1986	2.2	1.1	2.7
1987	3.0	4.4	-1.3
1988	3.4	4.4	1.3
1989	3.8	4.6	-0.3
1990	3.9	6.1	-0.4
1991	3.6	3.1	3.5
1992	2.4	2.9	-0.3
1993	2.4	2.7	1.8
1994	2.1	2.7	0.7
1995	2.2	2.5	1.2
1996	1.9	3.3	2.1
1997	1.9	1.7	0.2
1998	1.2	1.6	0.3 *
1999	1.4	2.7	0.4
2000	2.1	3.4	-2.3
2001	2.4	1.6	1.3
2002	1.1	2.4	0.2

\* The CPI telephone service index was revised in December of 1997.  
Sources: Bureau of Labor Statistics and Bureau of Economic Analysis.

**Chart 7.2  
Percentage Change in CPI All Items and Telephone Services**



**Table 7.3**  
**Annual Changes in Price Indices for**  
**Local and Long Distance Telephone Services**

	Local Residential Service		Toll Service *			
	CPI	PPI	Interstate		Intrastate	
			CPI	PPI	CPI	PPI
1978	1.4 %	3.1 %	-0.7 %	0.0 %	1.3 %	0.1 %
1979	1.7	1.6	-0.8	-0.9	0.1	-0.7
1980	7.0	7.1	3.4	5.5	-0.6	2.3
1981	12.6	15.6	14.6	15.9	6.2	8.0
1982	10.8	9.0	2.7	3.9	4.2	1.7
1983	3.1	0.2	1.4	0.0	7.4	3.9
1984	17.2	10.4	-4.3	-5.1	3.6	3.8
1985	8.9	12.4	-3.7	-3.0	0.6	2.1
1986	7.1	8.9	-9.4	-10.0	0.3	-3.5
1987	3.3	2.6	-12.4	-11.8	-3.0	-3.0
1988	4.5	4.6	-4.2	-2.1	-4.2	-3.8
1989	0.6	1.9	-1.3	-1.7	-2.6	0.5
1990	1.0	1.5	-3.7	-0.1	-2.2	-2.2
1991	5.1	2.1	1.3	-1.3	-1.5	-2.6
1992	0.5	-0.2	-1.3	1.0	-2.4	1.3
1993	1.0	0.8	6.5	3.8	0.2	-1.1
1994	-0.3	0.7	5.4	6.1	-1.0	-1.4
1995	2.6	**	0.1	**	-3.8	**
1996	0.9	0.2	3.7	0.7	6.1	0.9
1997	1.0	0.2	-4.3	7.8	2.8	-4.3
1998	1.3	-0.1	-0.8	-0.4	1.5	-3.7
1999	2.8	0.2	-0.7	2.3	-1.6	-2.7
2000	5.5	1.6	-11.2	-4.5	-6.0	-0.6
2001	4.5	2.6	-2.0	-9.2	-1.7	2.5
2002	5.3	1.6	-5.9	-18.4	-6.1	-0.3

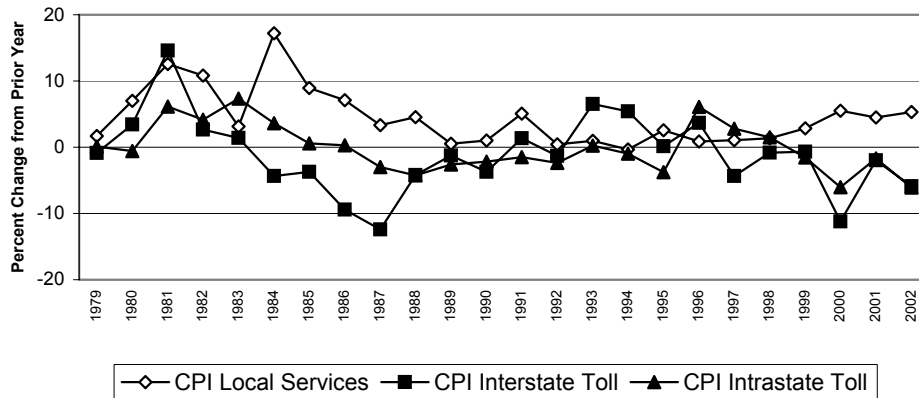
Source: Bureau of Labor Statistics.

\* CPI toll indices represent rates for households. Through 1994, PPI toll indices represent rate changes for both business and residential consumers. Since 1995, PPI indices reflect rates for residential customers.

\*\* The PPI telephone indices were revised in June of 1995. The series are not comparable.

**Chart 7.3**

**CPI Telephone Service Price Indices**



**Table 7.4  
Consumer Price Indices  
(December 1997 = 100)**

		<b>All Goods and Services</b>	<b>Telephone Services</b>	<b>Local Telephone Service</b>	<b>Long Distance Charges</b>	<b>Interstate Toll Service</b>	<b>Intrastate Toll Service</b>	<b>Cellular Telephone Services</b>
<b>BLS Series ID</b>		CUUR0000SA0	CUUR0000SEED	CUUR0000SEED01	CUUR0000SEED02	CUUR0000SS27051	CUUR0000SS27061	CUUR0000SEED03
1998	January	100.2	99.9	100.0	99.8	100.0	99.6	99.0
	February	100.4	100.0	100.4	99.7	100.1	98.9	98.1
	March	100.6	100.4	101.1	99.9	100.1	99.7	97.4
	April	100.7	100.5	101.1	100.1	100.1	101.0	96.4
	May	100.9	101.1	101.2	101.3	101.5	101.6	96.2
	June	101.1	101.4	101.4	101.7	101.2	102.5	94.4
	July	101.2	101.5	101.5	101.9	102.0	101.3	94.2
	August	101.3	100.4	101.3	99.9	99.1	101.6	93.9
	September	101.4	100.7	101.4	100.4	100.0	101.4	94.1
	October	101.7	100.7	101.5	100.4	100.0	101.6	93.7
	November	101.7	101.1	101.6	101.0	100.8	102.1	92.4
	December	101.6	100.3	101.3	99.9	99.2	101.5	91.7
1999	January	101.9	100.7	102.2	99.9	99.3	101.3	90.9
	February	102.0	100.4	102.0	99.5	99.1	100.7	89.7
	March	102.3	100.2	102.3	98.9	98.4	100.3	89.0
	April	103.0	100.0	100.9	99.8	99.5	100.7	87.8
	May	103.0	99.6	102.7	97.5	96.4	100.2	85.8
	June	103.0	99.7	103.2	97.4	96.3	100.2	84.0
	July	103.3	99.5	103.7	96.7	95.3	100.0	82.9
	August	103.6	99.8	103.8	97.1	95.9	99.8	82.3
	September	104.1	99.6	103.7	96.8	95.9	99.2	82.6
	October	104.3	99.8	103.5	97.4	96.9	98.8	82.0
	November	104.3	100.6	103.9	98.7	99.1	99.2	81.2
	December	104.3	100.7	104.2	98.6	98.5	99.9	81.1
2000	January	104.6	100.9	104.8	98.5	98.3	100.1	80.6
	February	105.3	99.4	104.9	95.5	94.0	99.2	79.7
	March	106.1	98.9	105.1	94.4	93.1	98.5	79.2
	April	106.2	98.6	105.2	93.7	92.4	97.8	78.9
	May	106.3	98.5	105.3	93.4	92.0	97.6	78.2
	June	106.9	97.2	105.8	90.6	89.0	95.0	76.8
	July	107.1	98.2	107.3	91.3	89.8	95.7	74.9
	August	107.1	98.9	109.5	90.7	89.2	95.1	73.7
	September	107.7	97.0	108.5	87.9	86.2	92.0	72.8
	October	107.9	98.3	109.8	89.4	87.9	92.9	73.0
	November	107.9	97.5	110.3	87.2	85.0	91.9	72.9
	December	107.9	98.4	110.0	89.5	87.5	93.9	71.1
2001	January	108.6	98.8	110.5	89.9	88.0	94.2	68.9
	February	109.0	98.7	110.7	89.5	87.6	93.7	68.9
	March	109.2	99.4	110.9	90.7	89.0	94.5	68.7
	April	109.7	99.0	111.9	89.1	87.2	93.1	68.8
	May	110.2	98.7	112.1	88.2	86.2	92.6	68.5
	June	110.4	99.0	112.3	88.7	86.7	93.0	68.1
	July	110.0	99.6	113.2	88.9	86.8	93.0	68.6
	August	110.0	99.6	113.9	88.5	86.4	92.7	68.1
	September	110.5	99.2	114.1	87.6	85.5	92.0	67.2
	October	110.2	99.9	114.6	88.5	86.4	92.9	67.1
	November	110.0	99.6	114.8	87.6	85.5	92.2	67.5
	December	109.5	99.7	114.9	87.9	85.8	92.3	67.2
2002	January	109.8	100.3	115.7	88.2	86.2	92.6	67.5
	February	110.2	100.3	116.1	87.9	85.8	92.6	67.5
	March	110.8	99.1	114.1	87.0	85.0	91.5	67.5
	April	111.5	98.2	114.0	85.1	82.7	90.1	67.6
	May	111.5	99.3	116.8	85.2	82.6	90.4	66.7
	June	111.5	99.2	116.9	85.0	82.4	90.1	66.6
	July	111.7	99.5	118.7	84.0	81.3	89.1	67.0
	August	112.0	100.6	120.2	84.7	82.6	89.1	67.8
	September	112.2	100.1	120.4	83.7	81.4	88.2	67.5
	October	112.4	99.9	120.6	83.0	80.7	87.5	67.9
	November	112.4	99.8	120.8	82.7	80.7	87.0	67.5
	December	112.2	99.9	121.0	82.6	80.7	86.7	67.4
2003	January	112.6	100.4	121.3	83.4	81.9	87.0	67.6
	February	113.5	100.5	121.2	83.5	82.2	86.9	67.7
	March	114.2	99.7	121.7	81.5	79.8	85.1	67.6
	April	113.9	98.7	121.9	79.2	77.4	83.1	67.5
	May	113.7	98.1	122.0	77.9	75.9	81.8	67.5

Note: Figures for All Goods and Services, Local Telephone Service, Interstate Toll Service, and Intrastate Toll Service after May, 2000 are converted from 1982-1984 base index series reported by the Bureau of Labor Statistics. Historical data on these series based upon the 1982-1984 index for January, 1972 through May, 2000 can be found in the Industry Analysis and Technology Division, Wireline Competition Bureau, *Monitoring Report* (October 2002).



**Table 7.5  
Producer Price Indices  
(June 1995 = 100)**

	Final Demand	Telephone Communications except Radiotelephone	Local Service, except Private Lines	Residence Local Service	Business Local Service	Coin Local Service	Other Local Service	Directory Assistance
<b>BLS Series ID</b>	pcubfd1#	pcu4813#	pcu4813#1	pcu4813#111	pcu4813#112	pcu4813#113	pcu4813#114	pcu4813#11401
1995 June	100.0	100.0	100.0	100.0	100.0	100.0	100.0	100.0
July	100.0	102.8	100.0	100.0	100.0	100.0	100.0	100.0
August	99.9	100.7	100.0	100.0	100.0	100.0	100.0	100.0
September	99.8	100.6	100.1	100.0	100.2	100.6	100.0	100.0
October	100.4	100.4	100.0	99.8	100.2	100.6	100.0	100.0
November	100.4	99.6	100.0	99.8	100.2	100.6	100.0	100.0
December	100.8	99.6	100.0	99.8	100.2	100.6	100.0	100.0
1996 January	101.1	99.3	100.0	99.8	100.1	100.6	100.0	100.0
February	101.1	99.6	100.0	99.8	100.2	100.6	100.0	100.0
March	101.6	99.5	100.1	99.8	100.2	101.9	100.0	100.0
April	102.0	99.7	100.1	99.8	100.2	101.9	100.0	100.0
May	102.6	99.5	100.1	99.8	100.2	101.9	100.0	100.0
June	102.9	99.9	100.2	100.0	100.2	101.9	100.0	100.0
July	102.8	100.3	100.3	100.0	100.4	102.0	100.0	100.0
August	103.0	100.6	100.4	100.0	100.5	102.0	100.0	100.0
September	102.9	100.5	100.4	100.0	100.5	102.0	100.0	100.0
October	103.7	100.4	100.4	100.0	100.5	102.0	100.0	100.0
November	103.4	100.1	100.4	100.0	100.5	102.0	100.0	100.0
December	103.4	99.5	100.4	100.0	100.5	102.0	100.0	100.0
1997 January	103.5	100.5	100.4	100.0	100.5	102.0	100.0	100.0
February	103.3	99.8	100.4	100.0	100.5	102.0	100.0	100.0
March	103.1	99.0	100.3	100.0	100.5	102.0	100.0	100.0
April	102.6	99.2	100.4	100.0	100.6	102.0	100.0	100.0
May	102.8	99.9	100.5	100.2	100.7	102.1	100.0	100.0
June	102.7	100.4	100.5	100.2	100.7	102.1	100.0	100.0
July	102.5	100.1	100.4	100.1	100.5	102.1	100.0	100.0
August	102.8	100.4	100.4	100.1	100.5	102.1	100.0	100.0
September	102.9	99.3	100.4	100.1	100.5	102.1	100.0	100.0
October	103.3	99.0	100.4	100.2	100.5	102.1	100.0	100.0
November	102.9	99.0	100.5	100.2	100.5	102.1	102.3	103.6
December	102.5	99.1	100.4	100.2	100.5	101.4	102.3	103.6
1998 January	101.8	99.2	100.5	100.2	100.6	101.7	102.3	103.6
February	101.7	99.0	100.5	100.2	100.6	101.7	102.3	103.6
March	101.6	98.7	100.5	100.2	100.6	101.7	102.3	103.6
April	101.9	98.6	100.5	100.2	100.6	101.7	102.3	103.6
May	102.0	98.7	100.4	100.0	100.5	101.7	102.3	103.6
June	102.0	98.2	100.3	100.0	100.4	101.7	102.3	103.6
July	102.3	99.0	100.3	100.1	100.3	101.7	102.3	103.6
August	102.0	98.7	100.3	100.1	100.3	101.7	102.3	103.6
September	102.0	98.5	100.3	100.1	100.4	101.7	102.3	103.6
October	102.7	97.9	100.3	100.1	100.3	101.7	102.3	103.6
November	102.1	97.3	100.3	100.1	100.3	101.7	102.3	103.6
December	102.2	97.4	100.3	100.1	100.4	101.7	102.3	103.6
1999 January	102.5	96.9	100.4	100.2	100.4	101.7	102.3	103.6
February	102.1	96.2	100.4	100.2	100.5	101.7	102.3	103.6
March	102.3	96.6	100.4	100.2	100.5	101.7	102.3	103.6
April	103.0	97.3	100.5	100.2	100.5	101.7	102.3	103.6
May	103.4	97.0	100.5	100.2	100.5	101.7	102.3	103.6
June	103.7	97.1	100.5	100.2	100.5	101.7	102.3	103.6
July	104.0	95.5	100.5	100.2	100.5	101.8	102.5	104.0
August	104.5	95.8	100.5	100.2	100.5	101.8	102.5	104.0
September	105.3	95.7	100.5	100.4	100.5	101.8	102.5	104.0
October	105.7	95.2	100.5	100.4	100.5	101.8	102.5	104.0
November	105.6	94.3	100.5	100.4	100.5	101.8	102.5	104.0
December	105.7	94.5	100.5	100.3	100.5	101.8	102.5	104.0

**Table 7.5  
Producer Price Indices  
(June 1995 = 100)**

	Final Demand	Telephone Communications except Radiotelephone	Local Service, except Private Lines	Residence Local Service	Business Local Service	Coin Local Service	Other Local Service	Directory Assistance
<b>BLS Series ID</b>	<b>pcubfd1#</b>	<b>pcu4813#</b>	<b>pcu4813#1</b>	<b>pcu4813#111</b>	<b>pcu4813#112</b>	<b>pcu4813#113</b>	<b>pcu4813#114</b>	<b>pcu4813#11401</b>
2000 January	105.5	94.8	100.6	100.3	100.6	101.8	102.5	104.0
February	106.6	94.1	100.6	100.3	100.6	101.8	102.5	104.0
March	107.0	94.8	100.7	100.3	100.9	101.8	102.5	104.0
April	106.9	94.1	100.7	100.5	100.7	101.5	102.5	104.0
May	107.5	93.4	100.7	100.6	100.6	101.9	102.5	104.0
June	108.5	94.1	100.8	100.8	100.5	102.3	102.5	104.0
July	108.5	94.0	101.3	101.7	100.6	102.7	102.5	104.0
August	108.2	94.0	101.3	101.7	100.6	103.2	102.5	104.0
September	109.4	93.8	101.5	101.9	100.6	103.6	102.6	104.2
October	109.8	93.4	101.4	101.9	100.5	103.6	102.6	104.2
November	109.6	93.0	101.4	101.9	100.5	103.6	102.6	104.2
December	109.4	93.1	101.4	101.9	100.5	103.6	102.6	104.2
2001 January	110.7	92.2	101.4	101.9	100.5	103.6	102.8	104.5
February	110.4	92.0	101.5	101.9	100.5	103.6	102.8	104.5
March	110.1	92.0	101.5	101.9	100.5	103.6	102.8	104.5
April	110.6	91.9	101.9	102.5	100.7	103.5	102.8	104.5
May	111.5	91.8	101.9	102.6	100.7	103.4	102.8	104.5
June	111.1	91.4	102.0	102.9	100.7	103.6	102.8	104.5
July	110.0	91.5	102.7	104.4	100.7	103.7	103.1	104.8
August	110.2	91.8	102.8	104.4	100.7	103.9	103.1	104.8
September	110.8	92.0	102.9	104.5	100.7	104.1	103.1	104.8
October	108.9	90.1	102.9	104.5	100.8	104.3	103.1	104.8
November	108.2	90.1	102.9	104.5	100.8	104.3	103.1	104.8
December	107.5	89.2	102.9	104.5	100.8	104.3	103.1	104.8
2002 January	107.5	88.4	103.4	105.2	101.0	104.3	103.1	104.8
February	107.7	88.0	103.4	105.2	101.0	104.3	103.1	104.8
March	108.4	87.9	103.4	105.3	101.0	104.3	103.1	104.8
April	108.9	87.5	103.4	105.4	101.0	104.3	103.1	104.8
May	108.6	87.8	103.4	105.3	101.0	104.3	103.1	104.8
June	109.0	87.7	103.5	105.5	101.1	104.3	103.1	104.8
July	109.0	87.4	104.0	106.1	101.1	104.3	112.3	119.5
August	108.9	87.8	104.0	106.1	101.2	104.3	112.3	119.5
September	109.5	87.7	104.0	106.2	101.1	103.9	112.6	119.9
October	110.7	85.5	104.0	106.2	101.1	103.9	112.6	119.9
November	109.9	86.4	103.9	106.2	101.1	103.9	112.6	119.9
December	109.3	86.0	104.0	106.2	101.1	103.9	112.6	119.9
2003 January*	111.5	85.6	103.9	106.1	101.1	103.9	112.6	119.9
February*	113.1	85.7	103.9	106.1	101.1	103.9	112.6	119.9
March*	114.9	85.6	103.9	106.1	101.1	103.9	112.6	119.9
April*	112.0	85.3	104.0	106.2	101.1	103.9	112.6	119.9

\* Subject to revision.

**Table 7.5**  
**Producer Price Indices - Continued**  
**(June 1995 = 100)**

	Other Local Service, except Directory Assistance	Public Switched Toll Service	Residence Switched Toll Service	Intrastate Residence Switched Toll Service	Interstate Residence Switched Toll Service	International Residence Switched Toll Service	Business Switched Toll Service	Business Switched Access Toll Service
<b>BLS Series ID</b>	pcu4813#11409	pcu4813#2	pcu4813#21	pcu4813#211	pcu4813#212	pcu4813#213	pcu4813#22	pcu4813#221
1995 June	100.0	100.0	100.0	100.0	100.0	100.0	100.0	100.0
July	100.0	105.2	102.6	101.2	105.2	99.4	108.2	104.0
August	100.0	101.3	101.3	101.1	103.7	95.7	101.4	101.4
September	100.0	101.0	101.0	103.2	100.1	97.2	101.0	102.1
October	100.0	100.8	102.0	105.8	100.9	96.4	99.5	100.3
November	100.0	99.3	99.7	102.9	98.1	94.3	98.8	99.2
December	100.0	99.1	100.1	104.2	96.3	97.1	98.0	98.4
1996 January	100.0	98.8	99.6	101.6	99.3	95.0	97.8	98.7
February	100.0	99.3	100.3	104.7	98.2	95.0	98.0	99.0
March	100.0	99.0	101.3	106.3	98.8	92.9	96.3	96.5
April	100.0	99.3	100.6	104.2	98.6	93.3	97.8	98.4
May	100.0	98.8	100.8	106.0	97.9	93.8	96.5	96.7
June	100.0	99.5	101.2	106.0	98.2	94.2	97.5	97.2
July	100.0	100.2	102.8	106.4	102.3	92.8	97.1	97.4
August	100.0	100.9	103.3	110.4	99.2	90.5	98.0	99.4
September	100.0	100.6	102.1	107.8	98.1	89.3	98.9	100.3
October	100.0	100.4	101.2	104.0	101.3	85.9	99.4	102.5
November	100.0	99.9	100.1	105.7	99.1	79.8	99.7	101.3
December	100.0	98.8	99.2	105.1	97.0	77.8	98.2	99.2
1997 January	100.0	100.6	102.7	103.5	105.4	82.0	98.0	100.1
February	100.0	99.3	101.7	103.1	104.1	79.6	96.4	98.8
March	100.0	97.7	99.5	102.2	99.0	80.2	95.7	98.3
April	100.0	98.2	100.2	101.0	102.2	80.1	95.8	98.7
May	100.0	99.3	101.4	101.8	105.0	80.1	96.9	100.7
June	100.0	100.3	101.8	101.4	104.9	84.4	98.5	103.2
July	100.0	99.7	102.2	99.9	107.0	85.1	96.7	103.0
August	100.0	100.4	103.4	100.9	107.1	85.6	96.9	104.2
September	100.0	98.4	100.9	100.5	104.2	85.6	95.5	103.2
October	100.0	97.8	99.4	100.7	102.0	84.7	95.8	103.3
November	100.0	97.6	98.2	103.9	97.3	80.7	96.9	104.6
December	100.0	97.9	99.7	100.6	104.6	83.4	95.8	104.4
1998 January	100.0	98.0	100.5	99.0	107.2	82.7	95.0	102.9
February	100.0	97.7	100.2	96.7	110.0	76.8	94.6	103.0
March	100.0	97.2	100.8	94.0	115.1	78.1	93.0	100.5
April	100.0	97.0	99.1	97.8	107.3	78.0	94.4	103.0
May	100.0	97.2	99.9	99.2	107.3	79.6	94.0	102.7
June	100.0	96.4	98.9	99.3	105.3	77.6	93.5	102.2
July	100.0	97.9	100.9	99.0	108.7	76.3	94.3	103.4
August	100.0	97.2	99.6	97.8	109.1	76.7	94.3	102.3
September	100.0	96.8	98.7	97.2	108.3	74.2	94.6	105.8
October	100.0	95.7	98.9	97.5	107.8	76.4	92.0	102.6
November	100.0	94.6	96.3	96.9	102.4	73.2	92.5	102.3
December	100.0	94.8	96.2	96.9	104.2	68.3	93.1	103.4
1999 January	100.0	93.9	97.3	97.2	105.0	72.7	89.9	100.0
February	100.0	92.5	95.4	96.4	102.0	69.6	89.1	99.7
March	100.0	93.3	96.9	97.0	106.0	68.0	89.0	100.0
April	100.0	94.5	97.6	96.6	108.0	69.1	90.8	101.2
May	100.0	93.9	97.3	96.8	106.8	69.5	89.9	100.5
June	100.0	94.2	97.4	96.7	107.2	69.3	90.5	101.9
July	100.0	91.1	98.4	97.2	108.7	71.6	82.4	93.8
August	100.0	91.7	99.4	97.5	110.1	73.9	82.5	95.8
September	100.0	91.4	99.0	96.6	110.1	73.1	82.4	94.8
October	100.0	90.5	97.6	96.9	107.5	69.7	82.1	94.1
November	100.0	88.8	95.4	95.2	104.0	67.0	80.9	92.4
December	100.0	89.3	95.8	94.3	106.6	65.8	81.5	93.4

**Table 7.5  
 Producer Price Indices - Continued  
 (June 1995 = 100)**

	Other Local Service, except Directory Assistance	Public Switched Toll Service	Residence Switched Toll Service	Intrastate Residence Switched Toll Service	Interstate Residence Switched Toll Service	International Residence Switched Toll Service	Business Switched Toll Service	Business Switched Access Toll Service
<b>BLS Series ID</b>	pcu4813#11409	pcu4813#2	pcu4813#21	pcu4813#211	pcu4813#212	pcu4813#213	pcu4813#22	pcu4813#221
2000 January	100.0	89.7	96.5	94.8	107.4	67.5	81.6	95.4
February	100.0	88.4	94.1	96.2	100.1	65.9	81.6	92.9
March	100.0	89.7	96.2	95.0	105.9	68.2	82.1	95.3
April	100.0	88.3	94.6	94.4	102.8	67.0	80.8	93.4
May	100.0	87.0	92.9	93.6	99.3	65.7	80.0	93.2
June	100.0	88.3	95.1	94.4	104.1	67.0	80.3	94.0
July	100.0	87.8	94.3	93.8	102.1	68.0	80.0	94.6
August	100.0	87.7	94.2	93.8	102.2	67.2	80.0	94.5
September	100.0	87.3	94.8	93.9	104.7	64.5	78.4	92.6
October	100.0	86.6	93.2	93.5	101.7	61.6	78.8	93.1
November	100.0	85.6	92.6	93.5	101.7	58.4	77.3	91.5
December	100.0	85.9	93.0	93.7	101.8	60.2	77.5	91.1
2001 January	100.0	84.2	92.2	93.3	107.4	60.9	74.7	87.6
February	100.0	83.8	92.1	94.1	99.5	61.8	73.9	87.9
March	100.0	83.9	92.4	94.7	98.2	61.3	73.8	87.5
April	100.0	83.4	92.1	94.3	98.6	61.3	73.0	87.2
May	100.0	83.1	92.2	94.3	98.2	60.4	72.2	85.8
June	100.0	82.4	91.4	95.2	98.9	57.4	71.6	84.7
July	100.0	81.9	91.3	95.6	96.9	57.9	70.7	84.3
August	100.0	82.5	92.8	95.8	96.0	54.8	70.2	83.2
September	100.0	82.7	91.7	95.9	101.2	52.9	72.0	84.3
October	100.0	79.2	88.4	94.9	92.2	49.7	68.2	80.5
November	100.0	79.1	89.0	95.5	94.7	45.6	67.4	77.6
December	100.0	77.4	88.2	96.0	92.4	44.5	64.6	74.6
2002 January	100.0	75.7	86.7	95.4	89.1	43.9	62.7	72.7
February	100.0	75.0	85.2	95.8	85.4	42.4	62.8	73.3
March	100.0	74.6	84.5	95.6	84.8	40.2	62.8	73.6
April	100.0	73.8	83.9	95.3	82.9	41.2	61.9	73.4
May	100.0	74.5	83.5	95.3	82.1	40.6	63.7	73.7
June	100.0	74.2	83.3	95.1	81.3	41.6	63.3	74.3
July	100.0	73.3	83.1	94.7	80.9	42.1	61.5	72.1
August	100.0	74.1	84.1	96.9	81.5	42.3	62.0	72.4
September	100.0	73.8	83.0	96.9	78.8	41.4	62.8	72.8
October	100.0	69.7	77.1	96.8	63.6	39.4	60.7	71.1
November	100.0	71.4	80.9	96.4	74.9	38.5	60.2	69.8
December	100.0	70.7	80.9	95.7	75.4	38.5	58.6	69.1
2003 January*	100.0	69.9	79.9	95.6	73.0	38.2	57.9	67.8
February*	100.0	70.2	79.4	87.6	80.1	36.8	59.2	68.9
March*	100.0	69.9	79.3	87.6	80.2	36.4	58.7	67.9
April*	100.0	69.3	78.0	86.9	77.7	35.6	59.0	68.7

\* Subject to revision.

**Table 7.5  
Producer Price Indices - Continued  
(June 1995 = 100)**

	Outbound Business Switched Access Toll Service	Intrastate Business Switched Access Toll Service, Outbound	Interstate Business Switched Access Toll Service, Outbound	International Business Switched Access Toll Service, Outbound	Inbound Business Switched Access Toll Service	Intrastate Business Switched Access Toll Service, Inbound	Interstate Business Switched Access Toll Service, Inbound	International Business Switched Access Toll Service, Inbound
<b>BLS Series ID</b>	pcu4813#2211	pcu4813#22111	pcu4813#22112	pcu4813#22113	pcu4813#2212	pcu4813#22121	pcu4813#22122	pcu4813#22123
1995 June	100.0	100.0	100.0	100.0	100.0	100.0	100.0	100.0
July	103.8	100.6	102.7	116.4	104.4	100.6	107.5	94.6
August	101.3	100.7	102.7	99.2	101.6	100.7	101.8	103.9
September	103.1	101.0	103.3	109.4	100.3	98.9	101.1	92.4
October	99.4	100.8	98.9	97.0	101.9	98.3	104.1	99.3
November	99.4	100.8	98.5	97.9	98.9	99.5	99.5	95.5
December	99.2	100.3	98.5	98.9	97.1	101.0	93.5	107.1
1996 January	99.1	100.9	95.9	102.7	98.0	96.2	95.6	106.6
February	98.3	101.5	96.5	94.0	100.1	97.4	98.8	101.2
March	96.2	100.7	93.7	88.7	97.0	95.3	90.4	93.4
April	98.0	101.2	94.8	96.3	99.0	95.9	94.9	91.0
May	97.8	101.6	95.1	93.9	94.7	91.2	92.3	88.1
June	97.5	101.1	96.5	87.6	96.5	96.6	90.0	93.9
July	97.2	101.6	95.3	88.8	97.7	95.6	89.6	93.2
August	99.7	102.0	101.6	88.5	98.9	91.4	94.8	100.6
September	101.7	102.2	108.2	84.0	97.7	92.3	94.2	92.9
October	105.0	103.1	114.5	87.4	98.1	91.0	94.4	93.6
November	101.4	101.7	106.0	89.1	101.0	91.6	97.9	86.7
December	97.8	101.8	98.2	82.2	101.5	90.8	91.5	93.2
1997 January	97.6	102.6	96.1	86.6	104.4	87.1	95.6	101.5
February	97.5	102.4	98.8	81.1	101.0	90.5	95.5	91.8
March	97.9	101.0	98.2	89.1	98.9	90.3	93.0	82.8
April	98.7	100.8	100.5	88.7	98.8	90.7	92.2	90.2
May	100.7	101.3	106.5	85.8	100.8	87.8	99.0	86.9
June	103.7	100.4	113.6	90.7	102.4	86.9	100.5	91.7
July	105.9	100.4	121.0	86.0	98.1	82.2	94.0	84.4
August	107.0	100.8	124.0	85.2	99.4	81.7	97.4	79.4
September	107.9	101.9	125.9	83.1	95.2	79.7	88.9	72.5
October	107.6	102.1	124.0	86.7	95.9	80.8	87.4	74.3
November	108.3	101.7	125.9	88.3	98.2	79.5	92.0	79.8
December	108.8	103.0	126.3	87.2	96.6	75.6	90.9	73.9
1998 January	108.7	102.6	126.3	85.3	92.8	76.0	85.4	68.8
February	111.1	102.5	132.1	87.5	88.9	74.2	84.7	74.3
March	108.9	102.3	128.2	83.6	85.9	75.7	80.6	74.8
April	112.6	102.5	137.3	85.8	86.4	72.9	84.2	67.3
May	111.5	101.6	135.6	86.5	87.3	69.5	85.8	62.3
June	111.2	102.8	132.8	87.0	86.5	70.0	85.0	59.8
July	112.0	103.7	134.6	85.3	88.4	75.6	85.6	60.1
August	112.9	104.2	135.4	87.9	84.1	74.2	78.6	62.8
September	115.6	105.6	142.1	85.2	88.7	75.6	86.7	61.1
October	111.2	106.9	130.0	82.3	87.6	74.6	85.4	55.7
November	111.4	106.4	129.1	87.1	86.6	70.5	84.8	60.1
December	112.5	106.3	132.1	87.8	87.5	73.8	84.6	65.6
1999 January	108.1	104.7	122.2	88.1	86.0	75.3	79.6	69.9
February	106.4	104.5	118.4	86.2	88.0	78.0	83.4	65.2
March	107.5	104.9	120.3	88.0	87.0	74.7	82.9	65.4
April	107.9	104.3	122.2	88.1	89.4	76.5	86.8	70.9
May	107.9	104.1	120.6	92.3	87.8	74.4	83.7	75.7
June	110.5	104.7	123.8	100.2	86.9	73.6	82.4	74.5
July	100.0	102.5	104.6	84.2	83.0	70.7	74.5	79.3
August	103.2	102.9	112.9	83.5	83.0	70.0	75.3	74.4
September	101.8	102.5	110.4	82.1	82.5	69.8	74.8	69.0
October	100.0	102.3	109.6	72.6	83.7	70.5	76.1	79.9
November	98.8	101.9	108.1	69.3	81.3	68.3	72.3	74.7
December	99.3	101.9	107.0	75.4	83.1	69.7	75.0	81.2

**Table 7.5  
 Producer Price Indices - Continued  
 (June 1995 = 100)**

	Outbound Business Switched Access Toll Service	Intrastate Business Switched Access Toll Service, Outbound	Interstate Business Switched Access Toll Service, Outbound	International Business Switched Access Toll Service, Outbound	Inbound Business Switched Access Toll Service	Intrastate Business Switched Access Toll Service, Inbound	Interstate Business Switched Access Toll Service, Inbound	International Business Switched Access Toll Service, Inbound
<b>BLS Series ID</b>	pcu4813#2211	pcu4813#22111	pcu4813#22112	pcu4813#22113	pcu4813#2212	pcu4813#22121	pcu4813#22122	pcu4813#22123
2000 January	102.1	102.4	109.9	85.2	83.8	70.7	76.6	76.2
February	98.5	101.5	104.8	76.9	83.2	70.2	75.7	75.0
March	101.4	103.0	113.6	69.3	84.6	76.1	74.9	80.1
April	100.0	102.0	110.5	70.5	81.9	69.5	74.6	58.9
May	100.5	102.0	110.5	74.0	80.7	68.4	72.7	56.5
June	100.6	102.2	111.1	72.6	82.6	68.8	77.4	52.0
July	101.6	102.2	110.5	80.9	82.5	68.7	77.3	51.0
August	101.6	102.2	110.8	80.3	82.2	68.3	76.6	54.1
September	100.1	102.0	110.0	73.0	79.5	61.9	74.2	51.9
October	98.9	101.8	108.2	69.6	83.1	69.4	78.2	52.9
November	97.5	101.3	105.6	68.3	81.1	67.5	75.2	46.9
December	96.9	100.8	103.0	72.4	81.1	67.2	74.8	52.5
2001 January	92.1	99.4	95.6	62.8	79.7	65.8	72.5	51.1
February	91.2	99.0	95.5	58.0	82.2	68.5	77.3	46.8
March	91.0	99.5	92.7	62.2	81.5	67.6	75.7	51.4
April	91.0	98.4	96.1	57.1	80.6	66.3	74.5	50.7
May	89.3	97.7	93.2	55.1	79.7	66.4	72.3	49.6
June	87.0	98.0	86.7	55.3	80.6	66.7	74.3	49.3
July	87.1	98.4	86.3	55.3	79.4	67.5	71.0	49.3
August	86.2	98.3	85.6	51.9	77.8	64.9	69.1	47.4
September	88.2	97.6	91.1	53.3	77.6	63.5	68.9	51.9
October	81.5	95.4	77.6	48.9	78.6	66.8	70.1	45.9
November	80.2	96.7	70.8	53.5	73.2	62.0	60.2	45.4
December	74.6	93.4	60.7	51.3	74.5	56.5	66.9	40.4
2002 January	72.6	93.3	56.2	48.9	72.7	60.8	60.8	37.4
February	72.3	93.3	55.1	49.3	75.1	62.6	64.7	37.9
March	73.3	93.1	57.4	50.9	74.1	63.2	61.9	39.8
April	72.7	92.8	54.5	53.9	74.7	60.7	65.2	36.4
May	72.4	91.7	49.7	64.2	76.1	63.3	66.2	41.0
June	72.9	92.1	52.9	61.1	76.7	62.5	67.0	41.0
July	70.5	91.9	49.4	53.4	74.8	63.2	63.5	39.4
August	69.3	91.8	48.7	48.4	77.6	64.7	68.2	42.1
September	69.7	91.8	49.0	50.2	78.0	64.9	67.6	55.1
October	68.3	91.4	48.9	43.0	75.9	62.6	64.0	58.4
November	67.7	91.0	48.2	42.2	73.6	61.0	61.5	45.7
December	66.0	90.5	44.4	40.9	74.4	60.2	63.9	45.3
2003 January*	64.3	90.2	39.5	41.6	73.9	62.9	60.3	52.2
February*	64.4	89.9	41.1	39.8	76.7	63.2	65.9	54.3
March*	64.4	90.0	40.6	40.4	74.0	63.3	60.2	52.6
April*	64.5	89.4	41.4	41.0	76.0	63.4	64.2	55.4

\* Subject to revision.

**Table 7.5  
 Producer Price Indices - Continued  
 (June 1995 = 100)**

	Business Special Access Switched Toll Service, except Private Lines	Outbound Business Special Access Switched Toll Service	Intrastate Business Special Access Switched Toll Service, Outbound	Interstate Business Special Access Switched Toll Service, Outbound	International Business Special Access Switched Toll Service, Outbound	Inbound Business Special Access Switched Toll Service	Intrastate Business Special Access Switched Toll Service, Inbound
<b>BLS Series ID</b>	pcu4813#222	pcu4813#2221	pcu4813#22211	pcu4813#22212	pcu4813#22213	pcu4813#2222	pcu4813#22221
1995 June	100.0	100.0	100.0	100.0	100.0	100.0	100.0
July	115.4	119.9	119.0	98.9	152.8	107.3	101.6
August	101.3	100.3	105.6	98.9	100.4	103.3	107.4
September	99.1	97.7	98.9	95.3	99.7	101.7	104.9
October	98.0	98.3	107.4	92.9	105.7	97.5	93.8
November	98.0	98.5	105.8	94.9	105.1	97.0	93.3
December	97.3	97.8	100.0	95.3	103.8	96.4	94.2
1996 January	96.3	95.8	105.2	92.6	97.8	97.1	93.5
February	96.4	95.1	103.6	91.7	96.6	98.9	96.7
March	95.8	94.3	101.2	89.4	98.7	98.5	92.5
April	96.9	95.3	102.1	92.4	97.1	99.9	108.5
May	96.2	96.6	93.8	92.2	100.6	95.5	98.3
June	98.2	96.2	102.2	86.6	103.2	101.6	102.2
July	96.7	95.1	112.2	82.9	101.7	99.4	101.2
August	95.6	95.9	110.6	89.6	101.2	95.0	101.7
September	96.6	95.1	100.7	91.6	98.7	99.3	100.1
October	94.2	93.3	96.0	91.2	93.2	95.9	103.0
November	96.9	93.6	93.8	94.3	91.5	102.9	113.1
December	96.7	90.7	90.3	87.7	93.7	107.3	103.0
1997 January	94.6	90.5	85.5	86.9	97.4	102.0	106.0
February	92.3	89.6	87.9	88.8	94.4	97.3	109.9
March	91.2	88.5	86.3	85.2	95.3	96.2	106.7
April	91.0	89.0	88.3	87.8	93.1	94.6	101.3
May	90.5	86.7	87.0	85.6	88.8	97.3	102.5
June	90.5	87.3	82.0	83.7	89.3	96.1	99.9
July	86.1	83.3	83.4	77.7	90.5	91.1	98.5
August	84.4	81.0	83.5	74.0	89.0	90.6	96.0
September	82.4	76.9	82.8	68.5	83.2	92.3	86.6
October	83.2	77.9	81.2	72.4	81.7	92.7	88.4
November	83.8	77.8	85.5	72.0	82.1	94.6	80.3
December	81.3	76.8	86.0	69.3	79.3	89.5	79.1
1998 January	81.7	75.9	83.4	69.0	82.3	92.2	71.7
February	80.6	73.2	79.7	65.7	82.6	93.9	73.6
March	80.3	76.7	85.8	69.9	86.0	86.7	68.4
April	79.7	74.7	77.9	70.3	80.9	88.8	65.6
May	79.2	73.0	79.8	69.6	75.2	90.4	71.2
June	78.8	68.7	76.0	63.5	72.3	96.9	76.8
July	79.0	67.4	65.2	64.6	70.2	99.9	79.0
August	80.7	70.5	70.4	65.1	78.1	99.0	74.9
September	75.8	66.1	70.5	62.9	66.4	93.3	80.4
October	74.1	65.4	65.7	62.1	67.7	89.6	74.9
November	76.0	70.1	71.4	68.0	72.4	86.5	77.2
December	75.9	67.2	70.1	63.3	70.3	91.4	79.3
1999 January	72.9	65.4	67.0	61.4	68.5	86.3	77.3
February	71.2	63.5	63.0	58.3	68.0	84.9	84.6
March	70.5	62.3	63.5	58.5	63.8	85.2	80.3
April	73.3	64.7	69.5	63.6	61.5	88.6	79.8
May	72.0	63.1	66.0	63.5	57.7	88.0	79.9
June	71.2	60.0	61.9	60.0	54.2	91.2	83.8
July	63.0	58.3	61.5	56.6	53.6	71.6	64.0
August	60.1	51.5	54.5	53.1	38.7	75.7	67.4
September	61.4	54.2	58.7	55.0	43.4	74.4	65.5
October	61.9	57.6	60.8	57.3	50.6	69.5	59.5
November	61.4	53.9	54.0	51.2	50.1	74.8	65.6
December	61.5	56.0	56.3	53.7	52.5	71.2	61.6

**Table 7.5  
 Producer Price Indices - Continued  
 (June 1995 = 100)**

	Business Special Access Switched Toll Service, except Private Lines	Outbound Business Special Access Switched Toll Service	Intrastate Business Special Access Switched Toll Service, Outbound	Interstate Business Special Access Switched Toll Service, Outbound	International Business Special Access Switched Toll Service, Outbound	Inbound Business Special Access Switched Toll Service	Intrastate Business Special Access Switched Toll Service, Inbound
<b>BLS Series ID</b>	pcu4813#222	pcu4813#2221	pcu4813#22211	pcu4813#22212	pcu4813#22213	pcu4813#2222	pcu4813#22221
2000 January	58.2	50.6	47.0	44.9	51.3	71.9	62.4
February	62.4	55.5	55.3	51.9	53.8	74.8	66.0
March	59.7	52.6	52.3	49.4	49.1	72.5	63.1
April	59.7	53.2	52.6	50.2	49.7	71.3	61.6
May	57.7	51.7	50.0	48.3	48.6	68.5	58.3
June	57.0	50.5	51.3	48.4	43.8	68.8	58.6
July	55.4	49.0	49.4	48.0	40.3	66.8	56.1
August	55.6	48.7	50.3	48.2	38.5	67.9	57.4
September	54.3	46.5	46.3	45.3	36.9	68.3	57.9
October	54.7	48.9	49.2	46.8	41.6	65.3	54.3
November	53.3	48.2	49.1	47.2	38.7	62.5	50.9
December	54.5	45.7	45.5	44.2	36.4	70.3	60.5
2001 January	53.0	43.8	40.7	39.4	39.0	69.5	59.5
February	50.2	42.8	43.1	39.7	34.4	63.5	52.1
March	50.7	41.9	41.1	39.5	32.2	66.5	55.4
April	48.9	41.3	47.0	34.8	35.4	62.4	52.9
May	49.3	41.4	49.5	35.5	33.8	63.4	58.5
June	49.6	40.7	44.4	34.9	34.4	65.5	56.8
July	47.9	41.1	41.5	38.7	30.8	60.1	49.9
August	48.4	39.5	37.5	34.6	33.0	64.4	57.7
September	51.2	43.5	49.1	37.2	38.5	65.1	58.5
October	47.4	40.7	49.7	33.6	34.1	59.6	53.3
November	50.2	41.9	29.5	32.6	47.3	65.0	60.8
December	47.7	40.2	47.8	30.0	38.8	61.3	53.4
2002 January	46.0	36.9	47.2	25.7	34.9	62.8	62.8
February	45.3	39.1	48.3	29.4	36.1	56.2	45.7
March	44.9	38.9	52.2	28.3	35.5	55.3	48.1
April	42.8	36.8	53.8	25.0	33.1	53.5	45.4
May	46.7	39.4	50.0	30.2	34.8	59.9	57.0
June	45.0	38.7	49.0	29.5	34.2	56.2	51.9
July	43.9	38.1	49.7	27.7	34.5	54.2	48.5
August	44.8	38.4	43.7	29.4	35.0	56.2	51.2
September	45.0	40.0	52.1	30.4	35.8	56.3	50.5
October	45.9	36.8	45.8	27.0	33.0	54.8	47.2
November	43.9	37.9	47.7	28.6	33.3	54.5	46.3
December	41.2	35.4	43.1	24.3	33.5	51.6	46.6
2003 January*	41.5	34.9	47.3	25.1	29.0	53.2	54.0
February*	42.8	36.1	42.5	27.3	31.0	54.8	46.7
March*	43.1	37.4	46.8	29.7	29.9	53.2	51.5
April*	42.6	36.3	47.1	25.3	33.3	53.9	47.8

\* Subject to revision.



**Table 7.5  
Producer Price Indices - Continued  
(June 1995 = 100)**

	Interstate Business Special Access Switched Toll Service, Inbound	International Business Special Access Switched Toll Service, Inbound	Other Toll Service	Private Line Service	Intrastate Private Line Service	LEC Intrastate Private Line Service	Other Telephone Services	Directory Advertising	Other Telephone Services
<b>BLS Series ID</b>	pcu4813#22222	pcu4813#22223	pcu4813#29	pcu4813#3	pcu4813#31	pcu4813#311	pcu4813#9	pcu4813#91	pcu4813#99
1995 June	100.0	100.0	100.0	100.0	100.0	100.0	100.0	100.0	100.0
July	109.0	99.6	100.0	100.0	100.0	100.0	100.0	100.0	100.0
August	102.2	98.5	100.0	100.0	100.0	100.0	100.0	100.0	100.0
September	99.9	97.6	100.0	100.0	100.0	100.0	100.0	100.0	100.0
October	99.7	97.3	100.0	100.0	100.0	100.0	100.0	100.0	100.0
November	98.7	97.2	100.0	100.0	100.0	100.0	100.2	100.3	100.0
December	97.1	97.1	100.0	100.0	100.0	100.0	100.2	100.3	100.0
1996 January	97.7	97.0	100.0	100.0	100.0	100.0	100.2	100.3	100.0
February	101.5	97.3	100.0	100.0	99.9	99.9	100.2	100.3	100.0
March	100.8	97.4	100.0	100.0	99.9	99.9	100.2	100.3	100.0
April	98.8	97.6	100.0	100.4	101.1	101.2	100.2	100.3	100.0
May	96.0	97.5	100.1	100.4	101.1	101.2	100.2	100.3	100.0
June	105.4	97.7	99.8	100.4	101.1	101.2	100.2	100.3	100.0
July	101.1	97.5	100.3	100.4	101.1	101.2	100.2	100.2	100.0
August	91.1	97.2	100.9	100.4	101.1	101.2	100.2	100.3	100.0
September	100.1	97.1	100.2	100.4	101.1	101.2	100.2	100.2	100.0
October	97.8	97.2	100.2	100.3	100.8	100.9	100.4	100.5	100.0
November	107.5	96.9	100.2	100.3	100.8	100.9	100.6	100.7	100.0
December	118.1	96.7	100.2	100.3	100.8	100.9	100.6	100.7	100.0
1997 January	106.4	96.7	100.2	100.3	100.8	100.9	100.5	100.7	100.0
February	96.0	96.5	100.2	100.3	100.8	100.9	100.6	100.7	100.0
March	96.5	96.6	100.2	100.3	100.8	100.9	100.5	100.6	100.0
April	97.4	96.8	100.2	100.3	100.8	100.9	100.5	100.7	100.0
May	101.1	97.2	100.2	100.3	100.9	101.1	100.5	100.7	100.0
June	99.4	97.3	100.2	100.3	100.9	101.1	100.5	100.6	100.0
July	90.0	96.9	100.2	100.3	100.9	101.1	100.5	100.6	100.0
August	91.4	97.1	100.2	100.3	100.9	101.1	100.5	100.6	100.0
September	97.2	97.0	100.2	100.3	100.8	100.9	100.5	100.6	100.0
October	97.2	96.9	100.6	100.3	100.8	100.9	100.7	100.8	100.0
November	99.1	96.7	100.6	100.3	100.8	100.9	100.7	100.9	100.0
December	89.7	96.7	100.7	100.3	100.8	100.9	100.7	100.8	100.0
1998 January	96.3	96.5	100.5	100.3	100.8	100.9	100.7	100.8	100.0
February	104.0	96.5	101.3	100.3	100.8	100.9	100.8	100.9	100.0
March	94.4	96.4	101.0	100.3	100.8	100.9	100.7	100.9	100.0
April	103.5	96.6	101.8	100.3	100.8	100.9	100.7	100.8	100.0
May	101.8	96.4	101.8	100.3	100.8	100.9	100.7	100.8	100.0
June	110.9	96.5	101.8	100.3	100.8	100.9	100.7	100.8	100.0
July	120.4	96.5	102.0	100.3	100.8	100.9	100.7	100.8	100.0
August	121.6	96.4	101.4	100.3	100.8	100.9	100.7	100.8	100.0
September	109.7	96.5	102.3	100.3	100.8	100.9	100.6	100.8	100.0
October	104.3	96.5	102.0	100.3	100.8	100.9	100.8	101.0	100.0
November	98.0	96.2	101.8	100.3	100.8	100.9	100.8	101.0	100.0
December	106.5	96.1	102.0	100.3	100.8	100.9	100.8	101.0	100.0
1999 January	97.6	96.0	101.5	100.2	100.6	100.7	100.8	101.0	100.0
February	93.0	96.1	101.5	100.3	100.8	101.0	100.8	101.0	100.0
March	94.7	96.0	101.5	100.3	100.8	101.0	100.8	101.0	100.0
April	101.2	96.2	101.4	100.3	100.8	101.0	100.8	101.0	100.0
May	100.0	96.2	102.0	100.3	100.8	101.0	100.8	101.0	100.0
June	104.9	96.9	100.1	100.3	100.8	101.0	100.8	101.0	100.0
July	74.2	97.1	101.6	100.3	100.8	100.9	100.2	100.2	100.0
August	80.7	96.5	100.0	100.3	100.8	100.9	100.2	100.2	100.0
September	79.0	96.2	101.9	100.3	100.8	100.9	100.8	101.0	100.0
October	71.6	92.1	100.0	100.3	100.8	100.9	100.8	100.9	100.0
November	79.6	85.0	98.8	100.3	100.8	100.9	100.9	101.1	100.0
December	74.3	84.5	99.1	100.4	101.2	101.4	100.4	100.5	100.0

**Table 7.5  
 Producer Price Indices - Continued  
 (June 1995 = 100)**

	Interstate Business Special Access Switched Toll Service, Inbound	International Business Special Access Switched Toll Service, Inbound	Other Toll Service	Private Line Service	Intrastate Private Line Service	LEC Intrastate Private Line Service	Other Telephone Services	Directory Advertising	Other Telephone Services
<b>BLS Series ID</b>	pcu4813#22222	pcu4813#22223	pcu4813#29	pcu4813#3	pcu4813#31	pcu4813#311	pcu4813#9	pcu4813#91	pcu4813#99
2000 January	75.2	90.6	99.1	100.4	101.2	101.4	100.7	100.9	100.0
February	79.5	90.0	99.6	100.4	101.2	101.4	100.9	101.0	100.0
March	76.1	90.8	100.2	100.4	101.2	101.4	100.5	100.7	100.0
April	74.3	88.5	100.6	100.4	101.2	101.4	100.6	100.7	100.0
May	70.2	89.1	100.3	100.4	101.2	101.4	100.0	100.0	100.0
June	70.6	89.1	100.8	100.4	101.2	101.4	100.0	100.1	100.0
July	67.6	85.2	100.6	100.4	101.2	101.4	100.7	100.9	100.0
August	69.2	93.0	100.3	100.4	101.2	101.4	100.6	100.7	100.0
September	69.8	95.5	100.4	100.4	101.2	101.4	101.3	101.6	100.0
October	65.2	93.0	99.3	100.4	101.1	101.3	100.0	100.0	100.0
November	61.2	78.2	99.8	100.4	101.2	101.4	101.3	101.6	100.0
December	72.9	88.8	95.6	100.4	101.2	101.4	101.0	101.2	100.0
2001 January	71.6	84.2	101.7	100.4	101.1	101.2	101.5	101.8	100.0
February	62.7	81.3	102.9	100.4	101.0	101.2	101.5	101.8	100.0
March	67.2	84.5	101.0	100.4	101.0	101.2	101.5	101.8	100.0
April	60.4	90.4	101.6	100.4	101.0	101.2	101.5	101.8	100.0
May	60.6	90.1	101.4	100.3	100.7	100.8	101.5	101.8	100.0
June	65.0	93.2	101.2	100.3	101.0	101.1	101.5	101.8	100.0
July	56.9	92.6	100.3	100.3	101.0	101.1	101.4	101.7	100.0
August	62.8	88.5	100.2	100.3	101.0	101.1	101.4	101.7	100.0
September	63.7	87.7	101.0	100.5	101.5	101.7	101.5	101.8	100.0
October	55.1	85.7	100.6	100.6	101.7	101.9	101.5	101.8	100.0
November	63.0	80.7	100.3	100.6	101.7	101.9	101.7	102.1	100.0
December	58.3	70.4	101.6	100.6	101.7	101.9	101.7	102.0	100.0
2002 January	58.4	78.6	102.4	100.6	101.7	101.9	101.7	102.0	100.0
February	50.6	76.0	100.5	100.6	101.9	102.1	101.7	102.0	100.0
March	48.4	77.2	99.2	100.6	101.9	102.1	101.7	102.0	100.0
April	45.6	75.6	99.2	100.7	102.2	102.4	101.7	102.0	100.0
May	54.5	74.4	99.9	100.8	102.3	102.6	101.6	102.0	100.0
June	48.9	74.6	100.1	100.9	102.5	102.9	101.6	102.0	100.0
July	46.1	74.2	99.5	100.9	102.7	103.1	101.6	102.0	100.0
August	49.1	75.6	99.6	100.9	102.7	103.1	101.6	102.0	100.0
September	49.6	75.2	99.5	100.9	102.7	103.1	101.6	102.0	100.0
October	47.6	73.5	95.9	101.3	103.7	104.2	101.9	102.0	100.0
November	47.3	74.5	96.4	101.3	103.7	104.2	101.8	102.2	100.0
December	41.6	74.0	93.9	101.3	103.7	104.2	102.0	102.4	100.0
2003 January*	42.7	73.9	91.5	100.9	102.8	103.1	102.0	102.4	100.0
February*	47.7	74.4	92.4	101.3	103.7	104.2	101.9	102.3	100.0
March*	43.4	60.9	90.5	101.3	103.7	104.2	101.9	102.3	100.0
April*	45.8	61.3	90.4	101.3	103.7	104.2	101.9	102.3	100.0

\* Subject to revision.

**Table 7.6**  
**Average Residential Rates for Local Service in Urban Areas, 1986-2002**  
(As of October 15)

Year	1986	1987	1988	1989	1990	1991	1992	1993	1994	1995	1996	1997	1998	1999	2000	2001	2002
Representative Monthly Charge *	\$12.58	\$12.44	\$12.32	\$12.30	\$12.36	\$13.03	\$13.05	\$13.16	\$13.19	\$13.62	\$13.71	\$13.67	\$13.75	\$13.77	\$13.64	\$14.49	\$14.55
Subscriber Line Charges	2.04	2.66	2.67	3.53	3.55	3.56	3.55	3.55	3.55	3.54	3.54	3.53	3.52	3.58	4.50	5.05	5.64
Additional Monthly Charge for Touch-Tone Service	1.57	1.52	1.54	1.52	1.33	1.06	0.97	0.94	0.77	0.44	0.30	0.25	0.10	0.09	0.06	0.04	0.04
Taxes, 911, and Other Charges	1.51	1.56	1.58	1.70	2.00	2.12	2.15	2.29	2.31	2.41	2.40	2.42	2.39	2.48	2.57	3.03	3.14
<b>Total Monthly Charge</b>	<b>17.70</b>	<b>18.18</b>	<b>18.11</b>	<b>19.05</b>	<b>19.24</b>	<b>19.77</b>	<b>19.72</b>	<b>19.95</b>	<b>19.81</b>	<b>20.01</b>	<b>19.95</b>	<b>19.88</b>	<b>19.76</b>	<b>19.93</b>	<b>20.78</b>	<b>22.62</b>	<b>23.38</b>
Basic Connection Charge	45.63	44.04	42.94	43.06	43.06	42.00	41.50	41.38	41.28	40.91	41.11	41.04	41.24	41.26	41.45	40.02	39.57
Additional Connection Charge for Touch-Tone Service	1.34	1.31	1.55	1.76	1.77	1.27	1.22	1.23	0.85	0.23	0.23	0.17	0.12	0.12	0.12	0.12	0.12
Taxes, 911, and Other Charges	2.28	2.20	2.11	2.44	2.32	2.30	2.29	2.30	2.33	2.44	2.36	2.46	2.38	2.57	2.53	2.81	2.70
<b>Total Connection Charge</b>	<b>49.25</b>	<b>47.55</b>	<b>46.60</b>	<b>47.26</b>	<b>47.15</b>	<b>45.57</b>	<b>45.01</b>	<b>44.92</b>	<b>44.46</b>	<b>43.58</b>	<b>43.70</b>	<b>43.67</b>	<b>43.74</b>	<b>43.95</b>	<b>44.10</b>	<b>42.95</b>	<b>42.39</b>
Additional Charge If Drop Line and Connection Block Needed	n.a.	n.a.	6.04	6.07	6.89	6.89	6.50	7.29	6.74	5.90	5.74	5.65	5.64	5.86	5.84	5.84	5.85
Lowest-Cost Inside Wiring Maintenance Plan	0.58	0.85	0.89	1.07	1.07	1.20	1.25	1.31	1.45	1.52	1.78	1.68	2.22	2.66	3.03	3.62	3.61

n.a.: not available

\* Rate is based upon flat-rate service where available, and measured/message service with 100 five-minute, same-zone business-day calls elsewhere.

**Table 7.7**  
**Average Local Rates for Businesses with a Single Line in Urban Areas**  
(As of October 15)

Year	1989	1990	1991	1992	1993	1994	1995	1996	1997	1998	1999	2000	2001	2002
Monthly Representative Service Charge*	\$31.06	\$30.97	\$32.29	\$32.45	\$32.70	\$32.25	\$32.48	\$32.58	\$32.76	\$32.44	\$32.41	\$32.18	\$31.88	\$32.12
Subscriber Line Charges	3.55	3.57	3.57	3.56	3.57	3.57	3.57	3.54	3.54	3.54	3.52	4.39	4.91	5.38
Extra for Touch-Tone	2.43	2.35	1.84	1.71	1.67	1.21	0.97	0.82	0.38	0.32	0.25	0.19	0.18	0.14
Taxes, 911 and Other Charges	4.21	4.32	4.42	4.57	4.63	4.61	4.79	4.87	4.99	4.97	5.03	5.04	5.45	5.95
<b>Total Monthly Charge</b>	<b>41.25</b>	<b>41.21</b>	<b>42.12</b>	<b>42.29</b>	<b>42.57</b>	<b>41.64</b>	<b>41.80</b>	<b>41.81</b>	<b>41.67</b>	<b>41.27</b>	<b>41.21</b>	<b>41.80</b>	<b>42.43</b>	<b>43.59</b>
Monthly Charge for Flat-Rate Service	\$33.04	\$33.29	\$34.12	\$34.06	\$34.85	\$34.39	\$34.45	\$34.42	\$34.68	\$34.39	\$33.73	\$33.45	\$32.02	\$33.34
Subscriber Line Charges	3.65	3.69	3.70	3.70	3.70	3.70	3.69	3.61	3.61	3.56	3.50	4.35	4.77	5.73
Extra for Touch-Tone	2.12	2.11	1.87	1.84	1.76	1.12	1.00	0.89	0.53	0.49	0.47	0.43	0.39	0.30
Taxes, 911 and Other Charges	4.90	4.98	5.22	5.34	5.50	5.36	5.58	5.55	5.58	5.63	5.49	5.68	5.98	6.88
<b>Total Monthly Charge for Flat-Rate Service</b>	<b>43.71</b>	<b>44.07</b>	<b>44.91</b>	<b>44.94</b>	<b>45.81</b>	<b>44.57</b>	<b>44.71</b>	<b>44.47</b>	<b>44.39</b>	<b>44.07</b>	<b>43.20</b>	<b>43.90</b>	<b>43.15</b>	<b>46.25</b>
Number of Sample Cities with Flat-Rate Service	59	56	54	54	54	53	53	53	53	54	54	54	54	54
Monthly Charge for Measured/Message Service	\$16.18	\$16.17	\$16.76	\$16.55	\$16.60	\$16.74	\$17.06	\$17.26	\$17.28	\$17.16	\$17.06	\$16.92	\$17.16	\$17.44
200 Five-Minute Business-Day Same-Zone Calls	16.11	16.19	16.70	17.23	17.57	17.38	17.15	17.10	17.18	17.15	17.24	17.63	17.56	17.24
Subscriber Line Charges	3.54	3.55	3.55	3.54	3.55	3.55	3.54	3.51	3.51	3.53	3.52	4.39	4.90	5.33
Extra for Touch-Tone	2.48	2.39	1.87	1.73	1.68	1.22	0.98	0.83	0.39	0.33	0.25	0.20	0.19	0.14
Taxes, 911 and Other Charges	4.41	4.53	4.56	4.77	4.86	4.83	5.01	5.13	5.22	5.19	5.28	5.32	5.76	6.26
<b>Total Monthly Charge for Measured/Message Service</b>	<b>42.72</b>	<b>42.83</b>	<b>43.44</b>	<b>43.82</b>	<b>44.26</b>	<b>43.72</b>	<b>43.75</b>	<b>43.84</b>	<b>43.57</b>	<b>43.35</b>	<b>43.35</b>	<b>44.45</b>	<b>45.57</b>	<b>46.40</b>
Number of Sample Cities with Measured/Message Service	83	83	84	84	84	87	87	86	85	85	85	85	85	86
Cost of a Five-Minute Business-Day Same-Zone Call	\$0.09	\$0.09	\$0.09	\$0.09	\$0.09	\$0.09	\$0.09	\$0.09	\$0.09	\$0.09	\$0.09	\$0.10	\$0.09	\$0.09
Basic Connection Charge	\$71.05	\$71.36	\$72.75	\$72.55	\$71.41	\$69.88	\$67.87	\$68.47	\$68.67	\$65.83	\$67.87	\$67.77	\$67.04	\$67.25
Additional Connection Charge for Touch-Tone Service	1.70	1.89	1.13	1.19	1.17	0.92	0.27	0.17	0.17	0.12	0.12	0.12	0.12	0.12
Taxes	4.06	4.15	4.32	4.33	4.25	4.13	4.17	4.20	4.45	4.13	4.53	4.40	4.69	4.97
<b>Total Connection Charge</b>	<b>76.81</b>	<b>77.40</b>	<b>78.20</b>	<b>78.07</b>	<b>76.83</b>	<b>74.93</b>	<b>72.31</b>	<b>72.85</b>	<b>73.29</b>	<b>70.09</b>	<b>72.55</b>	<b>72.29</b>	<b>71.86</b>	<b>72.35</b>
Additional Charge If Drop Line and Connection Block Needed	\$5.92	\$7.87	\$6.90	\$6.83	\$6.64	\$6.49	\$7.28	\$6.98	\$6.54	\$6.54	\$6.65	\$6.62	\$6.62	\$6.63
Lowest-Cost Inside Wiring Maintenance Plan	\$1.78	\$1.91	\$2.05	\$2.03	\$2.08	\$2.26	\$2.39	\$2.63	\$2.84	\$3.04	\$3.53	\$3.92	\$4.86	\$4.95

\* Rate is based upon flat-rate service where available, and measured/message service with 200 five-minute same-zone business-day calls elsewhere.

**Table 7.8**  
**Average Local Rates for Businesses with a Key System Line in Urban Areas**  
(As of October 15th)

Year	1989	1990	1991	1992	1993	1994	1995	1996	1997	1998	1999	2000	2001	2002
Monthly Representative Service Charge*	\$37.19	\$36.74	\$36.92	\$37.18	\$37.36	\$36.98	\$37.34	\$36.98	\$37.25	\$37.30	\$36.99	\$36.48	\$37.76	\$36.72
Subscriber Line Charges	4.87	4.98	4.85	4.78	5.36	5.45	5.61	5.50	5.75	5.82	6.92	6.95	6.62	6.40
Extra for Touch-Tone	2.65	2.49	1.94	1.82	1.67	1.23	1.00	0.85	0.41	0.33	0.26	0.20	0.19	0.14
Taxes, 911, and Other Charges	5.18	5.23	5.13	5.29	5.39	5.37	5.59	5.66	5.81	6.11	5.95	5.82	6.65	6.67
<b>Total Monthly Charge</b>	<b>49.89</b>	<b>49.44</b>	<b>48.84</b>	<b>49.08</b>	<b>49.78</b>	<b>49.04</b>	<b>49.54</b>	<b>49.00</b>	<b>49.22</b>	<b>49.56</b>	<b>50.12</b>	<b>49.43</b>	<b>51.22</b>	<b>49.94</b>
Monthly Charge for Flat-Rate Service	\$44.84	\$44.75	\$44.35	\$44.44	\$44.85	\$44.88	\$45.31	\$45.33	\$44.71	\$45.05	\$43.78	\$42.86	\$43.90	\$43.41
Subscriber Line Charges	5.65	5.68	5.55	5.52	6.02	6.16	6.17	6.10	6.63	7.06	7.70	7.87	7.46	6.99
Extra for Touch-Tone	2.25	2.15	1.87	1.84	1.76	1.13	1.07	0.96	0.60	0.49	0.47	0.43	0.40	0.30
Taxes, 911, and Other Charges	6.77	6.73	6.70	6.83	6.96	6.96	7.16	7.16	7.17	7.79	7.14	7.19	7.84	8.35
<b>Total Monthly Charge for Flat-Rate Service</b>	<b>59.51</b>	<b>59.32</b>	<b>58.48</b>	<b>58.64</b>	<b>59.60</b>	<b>59.14</b>	<b>59.70</b>	<b>59.55</b>	<b>59.11</b>	<b>60.39</b>	<b>59.10</b>	<b>58.34</b>	<b>59.61</b>	<b>59.04</b>
Number of Sample Cities with Flat-Rate Service	59	56	54	54	54	53	53	53	53	54	54	54	54	54
Monthly Charge for Measured/Message Service	\$20.38	\$20.48	\$19.81	\$19.38	\$19.98	\$19.81	\$20.16	\$20.13	\$21.10	\$20.41	\$20.49	\$20.17	\$20.76	\$21.13
200 Five-Minute Business-Day Same-Zone Calls	16.01	16.10	16.88	17.45	17.86	17.66	17.36	17.40	17.33	17.39	17.69	18.09	19.07	18.05
Subscriber Line Charges	4.78	4.88	4.74	4.67	5.24	5.35	5.53	5.46	5.61	6.17	6.83	6.85	6.63	6.34
Extra for Touch-Tone	2.77	2.59	1.99	1.86	1.70	1.24	1.00	0.86	0.36	0.27	0.19	0.13	0.12	0.07
Taxes, 911, and Other Charges	4.93	5.10	4.91	5.05	5.20	5.18	5.35	5.55	5.70	6.08	5.95	5.91	6.06	6.53
<b>Total Monthly Charge for Measured/Message Service</b>	<b>48.87</b>	<b>49.14</b>	<b>48.33</b>	<b>48.41</b>	<b>49.98</b>	<b>49.24</b>	<b>49.40</b>	<b>49.40</b>	<b>50.10</b>	<b>50.32</b>	<b>51.15</b>	<b>51.15</b>	<b>52.65</b>	<b>52.13</b>
Number of Sample Cities with Measured/Message Service	77	77	78	78	80	81	81	79	77	80	80	80	80	80
Cost of a Five-Minute Business-Day Same-Zone Call	\$0.0932	\$0.0948	\$0.0935	\$0.0955	\$0.0969	\$0.0947	\$0.0928	\$0.0927	\$0.0922	\$0.0921	\$0.0938	\$0.0958	\$0.0921	\$0.0925
Basic Connection Charge for Three Lines	\$166.89	\$165.13	\$178.14	\$178.25	\$170.59	\$169.78	\$167.99	\$167.93	\$167.17	\$166.34	\$163.86	\$163.79	\$162.35	\$162.57
Additional Connection Charge for Touch-Tone Service	5.10	5.68	3.40	3.39	3.48	2.75	0.67	0.67	0.52	0.37	0.37	0.37	0.37	0.37
Taxes	9.43	9.30	9.67	9.61	9.02	9.00	9.84	10.04	11.04	10.54	11.24	10.71	10.12	11.42
<b>Total Connection Charge for Three Lines</b>	<b>181.42</b>	<b>180.11</b>	<b>191.21</b>	<b>191.25</b>	<b>183.08</b>	<b>181.54</b>	<b>178.49</b>	<b>178.64</b>	<b>178.74</b>	<b>177.28</b>	<b>175.47</b>	<b>174.86</b>	<b>172.84</b>	<b>174.35</b>
Additional Charge If Drop Line and Connection Block Needed	13.39	14.09	20.79	12.76	13.28	11.58	11.69	9.89	9.57	9.57	9.69	9.66	10.90	10.90

\* Rate is based upon flat-rate service where available, and measured/message service with 200 five-minute, same-zone business-day calls elsewhere.

**Table 7.9**  
**Average Local Rates for Businesses with a PBX Trunk in Urban Areas**  
(As of October 15th)

Year	1989	1990	1991	1992	1993	1994	1995	1996	1997	1998	1999	2000	2001	2002
Monthly Representative Service Charge*	\$39.24	\$39.18	\$40.86	\$40.96	\$40.35	\$39.83	\$40.10	\$40.13	\$40.07	\$40.36	\$39.96	\$39.65	\$39.75	\$39.38
Subscriber Line Charges	4.98	4.98	4.85	4.78	5.36	5.45	5.61	5.57	5.74	5.17	6.92	6.95	6.56	6.41
Extra for Touch-tone	3.29	3.29	2.66	2.47	2.38	1.74	1.36	1.13	0.58	0.49	0.39	0.24	0.23	0.17
Taxes, including 911 and Other Charges	5.63	5.65	5.71	5.90	5.89	5.83	6.05	6.12	6.24	6.27	6.39	6.26	7.51	8.02
<b>Total Monthly Charge</b>	<b>53.14</b>	<b>53.10</b>	<b>54.08</b>	<b>54.11</b>	<b>53.98</b>	<b>52.85</b>	<b>53.12</b>	<b>52.95</b>	<b>52.63</b>	<b>52.29</b>	<b>53.66</b>	<b>53.10</b>	<b>54.06</b>	<b>53.98</b>
Monthly Charge for Flat-rate Service	\$49.40	\$49.36	\$51.49	\$51.24	\$51.21	\$51.05	\$51.09	\$50.92	\$50.46	\$51.13	\$49.25	\$49.06	\$49.54	\$49.26
Subscriber Line Charges	5.68	5.68	5.55	5.52	6.02	6.16	6.17	6.10	6.61	6.93	7.70	7.87	7.47	7.11
Extra for Touch-tone	3.29	2.65	2.32	2.29	2.14	1.40	1.28	1.15	0.73	0.63	0.61	0.53	0.51	0.38
Taxes, including 911 and Other Charges	7.44	7.49	7.75	7.95	7.98	7.95	8.12	8.09	8.08	8.68	7.99	8.11	9.44	9.17
<b>Total Monthly Charge for Flat-rate Service</b>	<b>65.81</b>	<b>65.19</b>	<b>67.11</b>	<b>66.99</b>	<b>67.36</b>	<b>66.56</b>	<b>66.66</b>	<b>66.26</b>	<b>65.87</b>	<b>67.36</b>	<b>65.55</b>	<b>65.58</b>	<b>66.96</b>	<b>65.44</b>
Number of Sample Cities with Flat-rate Service	53	56	54	54	54	53	53	53	53	54	54	54	54	54
Monthly Charge for Measured/Message Service	\$20.53	\$20.45	\$20.88	\$20.65	\$20.23	\$20.03	\$20.42	\$20.44	\$21.16	\$20.81	\$21.17	\$20.61	\$21.09	\$21.40
200 Five-minute Business-day Same-zone Calls	16.10	16.10	16.57	17.18	17.61	17.41	17.10	17.04	17.22	17.12	17.47	17.97	17.95	18.01
Subscriber Line Charges	4.89	4.85	4.76	4.68	5.27	5.34	5.52	5.47	5.63	5.55	6.85	6.85	6.33	6.33
Extra for Touch-tone	3.41	3.41	2.69	2.47	2.37	1.72	1.33	1.08	0.54	0.42	0.30	0.15	0.07	0.07
Tax including 911 Charges	5.16	5.16	5.04	5.22	5.25	5.21	5.36	5.51	5.76	5.82	6.04	5.96	6.40	6.56
<b>Total Monthly Charge for Measured/Message Service</b>	<b>50.09</b>	<b>49.97</b>	<b>49.93</b>	<b>50.20</b>	<b>50.73</b>	<b>49.71</b>	<b>49.73</b>	<b>49.54</b>	<b>50.31</b>	<b>49.72</b>	<b>51.83</b>	<b>51.54</b>	<b>51.84</b>	<b>52.38</b>
Number of Sample Cities with Measured/Message Service	77	74	76	76	78	79	79	78	76	78	78	78	76	76
Cost of a Five-minute Business-day Same-zone Call	\$0.10	\$0.10	\$0.09	\$0.10	\$0.10	\$0.09	\$0.09	\$0.09	\$0.09	\$0.09	\$0.09	\$0.10	\$0.09	\$0.09
Basic Connection Charge for Three Lines	\$164.60	\$164.60	\$178.28	\$178.39	\$170.74	\$169.93	\$168.08	\$168.02	\$166.42	\$165.91	\$163.43	\$163.36	\$161.85	\$162.03
Additional Connection Charge for Touch-tone Service	5.51	5.51	3.22	3.39	3.48	2.75	0.67	0.67	0.52	0.67	0.37	0.37	0.37	0.37
Tax	9.20	9.20	9.65	9.61	9.02	9.01	9.84	10.05	11.04	10.56	11.26	10.72	10.13	11.43
<b>Total Connection Charge for Three Lines</b>	<b>179.31</b>	<b>179.31</b>	<b>191.16</b>	<b>191.39</b>	<b>183.23</b>	<b>181.69</b>	<b>178.59</b>	<b>178.73</b>	<b>177.99</b>	<b>177.14</b>	<b>175.06</b>	<b>174.46</b>	<b>172.36</b>	<b>173.83</b>
Additional Charge if Drop Line and Connection Block Needed	14.09	14.09	20.79	12.58	13.28	11.58	11.69	10.46	10.10	10.10	9.87	9.84	9.83	9.84

**Table 7.10**  
**Basic Schedule Interstate Toll Rates of AT&T, WorldCom, and Sprint for Residential Customers for a 10-Minute Day Call**  
**(As of December 31)**

	Residence Day Rates for 10-Minute calls																										
	5-Mile Call			16-Mile Call			39-Mile Call			90-Mile Call			200-Mile Call			334-Mile Call			678-Mile Call			1418-Mile Call			2455-Mile Call		
	AT&T	WorldCom	Sprint	AT&T	WorldCom	Sprint	AT&T	WorldCom	Sprint	AT&T	WorldCom	Sprint	AT&T	WorldCom	Sprint	AT&T	WorldCom	Sprint	AT&T	WorldCom	Sprint	AT&T	WorldCom	Sprint	AT&T	WorldCom	Sprint
1980	\$1.01			\$1.41			\$2.35			\$3.15	\$2.37	\$2.30	\$3.54	\$2.58	\$2.50	\$3.74	\$2.81	\$2.70	\$3.77	\$3.22	\$2.90	\$3.97	\$3.61	\$3.20	\$4.17	\$3.82	\$3.30
1981	1.13			1.63			2.77			3.67	3.07	2.67	4.07	3.39	2.90	4.36	3.62	3.13	4.39	3.66	3.36	4.60	3.84	3.71	4.80	4.00	3.83
1982	1.76	\$1.53	\$1.53	2.38	\$1.54	\$1.55	3.00	\$1.94	\$1.92	3.90	3.28	3.27	4.09	3.42	3.43	4.37	3.63	3.62	4.49	3.74	3.74	4.60	3.84	3.85	5.15	4.32	4.32
1983	1.76	1.54	1.54	2.38	2.10	2.09	3.00	2.70	2.69	3.90	3.28	3.29	4.09	3.42	3.43	4.37	3.63	3.62	4.49	3.74	3.74	4.60	3.84	3.83	5.15	4.32	4.32
1984	1.65	1.48	1.62	2.27	1.96	2.19	2.79	2.56	2.76	3.69	3.33	3.49	3.87	3.48	3.63	4.06	3.72	3.80	4.18	3.84	3.98	4.29	3.96	4.06	4.83	4.47	4.67
1985	1.98	1.80	1.70	2.59	2.33	2.00	3.00	2.82	2.20	3.48	3.29	3.34	3.66	3.48	3.45	3.85	3.72	3.63	3.97	3.84	3.70	4.07	3.96	3.80	4.43	4.28	4.10
1986	1.75	1.67	1.61	2.26	2.12	2.11	2.57	2.47	2.46	2.95	2.85	2.84	3.14	3.04	3.03	3.33	3.25	3.24	3.44	3.35	3.34	3.54	3.46	3.45	3.79	3.68	3.67
1987	1.48	1.45	1.46	1.89	1.85	1.86	2.09	2.04	2.06	2.38	2.32	2.34	2.56	2.51	2.52	2.75	2.70	2.70	2.95	2.90	2.92	2.96	2.91	2.93	3.08	3.04	3.04
1988	1.47	1.44	1.44	1.78	1.75	1.76	1.98	1.94	1.94	2.16	2.12	2.13	2.34	2.40	2.40	2.43	2.50	2.50	2.64	2.69	2.71	2.64	2.71	2.73	2.75	2.84	2.84
1989	1.71	1.70	1.70	2.01	2.00	2.00	2.21	2.15	2.20	2.21	2.15	2.20	2.30	2.15	2.25	2.31	2.15	2.30	2.40	2.35	2.35	2.50	2.45	2.45	2.50	2.45	2.45
1990	1.71	1.70	1.71	1.97	1.90	1.90	1.97	1.90	1.90	2.15	2.10	2.10	2.15	2.10	2.10	2.30	2.10	2.30	2.39	2.30	2.30	2.49	2.40	2.40	2.49	2.40	2.40
1991	1.70	1.70	1.71	1.80	1.80	1.80	1.90	1.90	1.90	2.10	2.10	2.10	2.10	2.10	2.10	2.30	2.30	2.30	2.30	2.30	2.30	2.44	2.40	2.40	2.45	2.40	2.40
1992	2.00	1.99	2.00	2.20	2.20	2.20	2.20	2.20	2.20	2.20	2.20	2.20	2.20	2.10	2.10	2.30	2.29	2.30	2.30	2.30	2.30	2.40	2.39	2.40	2.50	2.50	2.40
1993	2.20	2.20	2.20	2.30	2.30	2.30	2.30	2.30	2.30	2.30	2.30	2.30	2.40	2.40	2.40	2.40	2.40	2.40	2.40	2.40	2.40	2.50	2.50	2.50	2.50	2.50	2.50
1994	2.40	2.40	2.40	2.40	2.40	2.40	2.50	2.50	2.50	2.60	2.60	2.60	2.70	2.70	2.70	2.70	2.70	2.70	2.70	2.70	2.70	2.70	2.70	2.70	2.80	2.80	2.80
1995	2.40	2.40	2.40	2.40	2.40	2.40	2.50	2.50	2.50	2.60	2.60	2.60	2.70	2.70	2.70	2.70	2.70	2.70	2.70	2.70	2.70	2.70	2.70	2.70	2.80	2.80	2.80
1996	2.60	2.60	2.60	2.80	2.70	2.70	2.80	2.80	2.80	2.80	2.80	2.80	2.90	2.80	2.90	3.00	2.90	2.90	3.00	2.90	3.00	3.00	2.90	3.00	3.10	3.10	3.10
1997	2.80	2.60	2.60	2.80	2.60	2.80	2.80	2.60	2.80	2.80	2.60	2.80	2.80	2.90	2.90	2.80	2.90	3.00	2.80	2.90	3.00	2.80	2.90	3.00	2.80	2.90	3.10
1998	2.80	2.60	2.50	2.80	2.60	2.50	2.80	2.60	2.50	2.80	2.60	2.50	2.80	2.90	2.50	2.80	2.90	2.50	2.80	2.90	2.50	2.80	2.90	2.50	2.80	2.90	2.50
1999	2.60	2.60	2.60	2.60	2.60	2.80	2.60	2.60	2.80	2.60	2.60	2.80	2.60	2.90	2.90	2.60	2.90	3.00	2.60	2.90	3.00	2.60	2.90	3.00	2.60	2.90	3.10
2000	2.95	3.00	2.80	2.95	3.00	3.00	2.95	3.00	3.00	2.95	3.00	3.20	2.95	3.00	3.20	2.95	3.00	3.30	2.95	3.00	3.30	2.95	3.00	3.30	2.95	3.00	3.40
2001	3.00	3.00	3.00	3.00	3.00	3.00	3.00	3.00	3.00	3.00	3.00	3.00	3.00	3.00	3.00	3.00	3.00	3.00	3.00	3.00	3.00	3.00	3.00	3.00	3.00	3.00	3.00
2002	3.50	3.50	3.00	3.50	3.50	3.00	3.50	3.50	3.00	3.50	3.50	3.00	3.50	3.50	3.00	3.50	3.50	3.00	3.50	3.50	3.00	3.50	3.50	3.00	3.50	3.50	3.00
	Percent Change 1989 to 2002																										
	105%	106%	76%	74%	75%	50%	58%	63%	36%	58%	63%	36%	52%	63%	33%	52%	63%	30%	46%	49%	28%	40%	43%	22%	40%	43%	22%

Sources : AT&T, WorldCom and Sprint tariffs until tariffs were discontinued on August 1, 2001. Dr. Bob's Long Distance for Less , Market Dynamics, Bethesda, Maryland. AT&T's, WorldCom's, and Sprint's websites after tariffs were discontinued.

**Table 7.11**  
**Average Revenue per Minute**

	AT&T	All Carriers		
	All Interstate and International Switched Services	All Interstate and International Switched Services	International Switched Services	All Interstate Switched Services
1984	\$0.32	NA	NA	NA
1985	0.31	NA	NA	NA
1986	0.28	NA	NA	NA
1987	0.25	NA	NA	NA
1988	0.23	NA	NA	NA
1989	0.22	NA	NA	NA
1990	0.20	NA	NA	NA
1991	0.20	NA	NA	NA
1992	0.19	\$0.19	\$1.01	\$0.15
1993	0.19	0.19	1.02	0.15
1994	0.18	0.18	0.93	0.14
1995	NA	0.17	0.91	0.12
1996	NA	0.16	0.76	0.12
1997	NA	0.15	0.69	0.11
1998	NA	0.14	0.58	0.11
1999	NA	0.14	0.54	0.11
2000	NA	0.12	0.52	0.09
2001	NA	0.10	0.35	0.08

NA - Not available.

Note: Data for some prior years have been revised.

Sources: AT&T information provided by AT&T. Other estimates from Industry Analysis and Technology Division, Wireline Competition Bureau, *Telecommunications Industry Revenues* (March 2003).



**Table 7.12**  
**Interstate Per-Line Access Charges**  
**(National Average per Month per Line) \***

Rates in Effect		Charged to End Users † (Subscriber Line Charges)			Charged to Long Distance Carriers ‡ (Presubscribed Interexchange Carrier Charges)			
From	To	Residential and Single-Line Business	Non-Primary Residential	Multiline Business and Centrex	Residential and Single-Line Business	Non-Primary Residential	Multiline Business	Centrex
05/26/84	05/31/85	\$0.00		\$4.99				
06/01/85	09/30/85	1.00		4.99				
10/01/85	05/31/86	1.00		4.97				
06/01/86	12/31/86	2.00		4.97				
01/01/87	06/30/87	2.00		5.12				
07/01/87	12/31/87	2.60		5.12				
01/01/88	11/30/88	2.60		5.01				
12/01/88	03/31/89	3.20		5.01				
04/01/89	12/31/89	3.50		4.94				
01/01/90	06/30/90	3.48		4.84				
07/01/90	12/31/90	3.48		4.83				
01/01/91	06/30/91	3.48		4.77				
07/01/91	11/27/91	3.49		4.74				
11/28/91	06/30/92	3.49		4.76				
07/01/92	06/30/93	3.49		4.68				
07/01/93	06/30/94	3.50		5.37				
07/01/94	06/30/95	3.50		5.45				
07/01/95	06/30/96	3.50		5.50				
07/01/96	06/30/97	3.50		5.53				
07/01/97	12/31/97	3.50		5.68				
01/01/98	06/30/98	3.50	\$4.98	6.92	\$0.49	\$1.50	\$2.52	\$0.35
07/01/98	12/31/98	3.50	4.99	7.11	0.49	1.38	2.38	0.38
01/01/99	06/30/99	3.50	5.88	7.05	0.49	1.38	2.22	0.32
07/01/99	12/31/99	3.50	5.84	6.94	0.95	1.77	2.78	0.42
01/01/00	06/30/00	3.50	5.81	6.94	0.92	1.70	2.44	0.35
08/11/00 #	06/30/01	4.28	5.99	6.88	0.00	0.00	2.30	0.37
07/01/01	12/31/01	4.78	5.93	6.66	0.00	0.00	1.35	0.22
01/01/02	06/30/02	4.92	5.93	6.79	0.00	0.00	1.35	0.22
07/01/02	06/30/03	5.62	5.88	6.45	0.00	0.00	0.48	0.08

\* This table shows average rates (weighted by access lines) for all local exchange carriers (LECs) that file access tariffs subject to price-cap regulation and all LECs in the National Exchange Carrier Association (NECA) pool.

† Prior to 1/01/98 carriers did not charge separate subscriber line charge (SLC) rates for primary and non-primary residential lines. Therefore, the residential and single-line business average SLCs reported prior to 1/01/98 include all residential SLC charges. The average residential and single-line business SLC rate as of 1/01/98 excludes non-primary residential SLC charges. Non-primary SLC charges are now reported separately, except for the LECs in the NECA pool, which continue to charge a single residential SLC. Under price-cap regulation, as of January 1, 2002, the caps on SLCs for primary residential and single-line business, non-primary residential, and multiline business and Centrex lines were \$5.00, \$7.00, and \$9.20, respectively. For NECA pool companies, the residential SLC cap was \$5.00 as of January 1, 2002, while the multiline business and Centrex SLC cap was \$9.20.

‡ On 1/01/98 price-cap carriers began to charge presubscribed interexchange carrier charges (PICCs). The reported PICCs are averages per line including both price-cap and NECA pool lines. While carriers do not charge different rates for Centrex and multiline business SLCs, they do charge different PICC rates for these lines. Therefore, the average multiline business and Centrex PICC rates are reported separately. However, multiline business line counts, used to compute average PICC rates, include Centrex lines for LECs in the NECA pool, which do not charge PICCs or distinguish in access filings between the two line types. On 7/01/00 price-cap carriers stopped charging residential and single line business PICCs. Therefore, under price-cap regulation, as of July 1, 2000, the caps on PICCs for primary residential and single-line business, non-primary residential, and multiline business lines equal \$0.00, \$0.00, and \$4.31, respectively. Centrex groups of 9 or fewer lines are capped at the multiline business PICC rate of \$4.31 per group. Centrex groups with more than 9 lines are capped \$0.48 per line (1/9th the multiline business rate).

# Although the charges took effect on July 1, 2000, some companies made adjustments to the tariffs which did not take effect until August 11, 2000.

Source: Access tariff filings.

**Table 7.13**  
**Interstate Per-Minute Access Charges**  
**(National Average in Cents per Minute) \***

Rates in Effect		Interstate Charges for Switched Access Service				
From	To	Carrier Common Line per Originating Access Minute*	Carrier Common Line per Terminating Access Minute*	Traffic Sensitive per Switched Minute	Non-Traffic Sensitive per Switched Minute †	Total Charge per Conversation Minute ‡
05/26/84	01/14/85	5.24 ¢	5.24 ¢	3.10 ¢		17.26 ¢
01/15/85	05/31/85	5.43	5.43	3.10		17.66
06/01/85	09/30/85	4.71	4.71	3.10		16.17
10/01/85	05/31/86	4.33	4.33	3.10		15.38
06/01/86	12/31/86	3.04	4.33	3.10		14.00
01/01/87	06/30/87	1.55	4.33	3.10		12.41
07/01/87	12/31/87	0.69	4.33	3.10		11.49
01/01/88	11/30/88	0.00	4.14	3.10		10.56
12/01/88	02/14/89	0.00	3.39	3.00		9.60
02/15/89	03/31/89	0.00	3.25	3.00		9.46
04/01/89	12/31/89	1.00	1.83	3.00		9.11
01/01/90	06/30/90	1.00	1.53	2.50		7.78
07/01/90	12/31/90	1.00	1.23	2.50		7.48
01/01/91	06/30/91	1.00	1.14	2.40		7.18
07/01/91	06/30/92	0.88	1.06	2.40		6.97
07/01/92	06/30/93	0.79	0.95	2.40		6.76
07/01/93	06/30/94	0.88	1.16	2.20		6.66
07/01/94	06/30/95	0.84	1.08	2.10	0.28 ¢	6.89
07/01/95	06/30/96	0.74	0.89	1.96	0.21	6.16
07/01/96	06/30/97	0.72	0.89	1.95	0.17	6.04
07/01/97	12/31/97	0.64	0.84	1.63	0.14	5.18
01/01/98	06/30/98	0.68	0.23	1.29	0.21	4.04
07/01/98	12/31/98	0.91	0.20	0.99	0.30	3.82
01/01/99	06/30/99	0.82	0.16	0.98	0.32	3.71
07/01/99	12/31/99	0.37	0.10	0.86	0.28	2.82
01/01/00	06/30/00	0.32	0.10	0.86	0.31	2.85
08/11/00 #	06/30/01	0.23	0.07	0.52	0.26	1.91
07/01/01	12/31/01	0.15	0.07	0.48	0.24	1.71
01/01/02	06/30/02	0.15	0.07	0.47	0.24	1.69
07/01/02	06/30/03	0.02	0.01	0.48	0.22	1.46

\* This table shows average rates (weighted by minutes of use) for all local exchange carriers (LECs) that file access tariffs subject to price-cap regulation and all LECs in the National Exchange Carrier Association (NECA) pool. The average rates reported here do not include the average revenue per minute from subscriber line charges (SLCs) or primary interexchange carrier charges (PICCs), which are reported in Table 7.12.

† Non-traffic sensitive charges include charges assessed on a per-month per-unit basis. Prior to 07/01/94 these charges were included in the average traffic-sensitive rates.

‡ The total charge per conversation minute consists of charges on the originating end of the call, which are adjusted for dialing and call setup time, plus charges on the terminating end. Originating charges per conversation minute equal the carrier common line charge per originating access minute plus the traffic-sensitive charge per switched minute, both multiplied by 1.07 to account for dialing and call setup time, plus the non-traffic-sensitive charge per switched minute. Terminating charges per conversation minute equal carrier common line charges per terminating access minute plus both traffic-sensitive and non-traffic-sensitive charges per switched minute.

# Although the charges took effect on July 1, 2000, some companies made adjustments to the tariffs which did not take effect until August 11, 2000.

Source: Access tariff filings.

**Table 7.14**  
**Interstate Per-Line Access Charges by Carrier**  
(In Dollars per Month per Line)\*

Company	Rates Effective From 07/01/02 To 06/30/03							2001 Average Monthly Access Lines † (Thousands)		
	Subscriber Line Charges			Presubscribed Interexchange Carrier Charges						
	Residential and Single-Line Business	Non-Primary Residential	Multiline Business and Centrex	Residential and Single-Line Business	Non-Primary Residential	Multiline Business	Centrex	Residential and Single-Line Business	Non-Primary Residential	Multiline Business and Centrex
Aliant	4.96	4.96	5.63	0.00	0.00	0.00	0.00	185	15	78
BellSouth	6.00	7.00	7.84	0.00	0.00	0.74	0.08	15,019	2,499	6,192
Cincinnati Bell	5.19	5.19	5.19	0.00	0.00	0.00	0.00	655	82	288
Citizens	5.73	6.42	9.20	0.00	0.00	4.31	0.63	1,658	180	511
Iowa Telecomm	6.00	7.00	9.10	0.00	0.00	4.31	0.00	224	17	46
Qwest	5.73	6.29	6.84	0.00	0.00	0.10	0.10	10,228	1,873	4,720
SBC	4.93	4.86	4.89	0.00	0.00	0.00	0.00	30,560	6,781	17,506
Sprint	5.50	5.82	7.27	0.00	0.00	0.28	0.00	5,316	847	1,829
Valor	6.00	7.00	9.12	0.00	0.00	4.07	2.13	339	55	92
Verizon	5.96	6.38	6.97	0.00	0.00	0.97	0.14	33,123	6,690	15,982
Price Caps	5.58	5.88	6.33	0.00	0.00	0.50	0.08	97,308	19,040	47,243
NECA	6.00	NA	9.20	0.00	NA	0.00	NA	11,510	NA	2,066
All Price Caps and NECA	\$5.62	\$5.88	\$6.45	\$0.00	\$0.00	\$0.48	\$0.08	108,818	19,040	49,309

\* This table shows average rates (weighted by access lines) for all local exchange carriers (LECs) that file access tariffs subject to price-cap regulation and all LECs in the National Exchange Carrier Association (NECA) pool. Rates are composites of all regions and subsidiaries of each local exchange carrier. No information is available for those carriers that are not in the NECA pool, but are subject to rate-of-return regulation.

† Access line counts measure lines that companies report as qualified to receive subscriber line charges (SLCs). ISDN-BRI lines, which are charged non-primary SLC and PICC rates are included in the non-primary residential line counts. ISDN-PRI lines, which are charged rates equal to five times the multiline business SLC and PICC rates, are multiplied by five and added to multiline business counts.

N/A: not available

Source: Access tariff filings.

**Table 7.15**  
**Interstate Per-Minute Access Charges by Carrier**  
(In Cents per Minute) \*

Company	Rates Effective From 07/01/02 To 06/30/03					2001 Minutes of Use (Millions)		
	Carrier Common Line per Originating Access Minute	Carrier Common Line per Terminating Access Minute	Switched Traffic Sensitive per Access Minute	Switched Non-Traffic Sensitive per Access Minute †	Total Charge per Conversation Minute ‡	CCL Originating	CCL Terminating	Local Switching
Aliant	0.00 ¢	0.00 ¢	0.73 ¢	0.37 ¢	2.24	257	643	913
BellSouth	0.00	0.00	0.35	0.20	1.13	27,108	55,240	76,617
Cincinnati Bell	0.00	0.00	0.52	0.26	1.60	992	2,133	3,134
Citizens	0.12	0.00	0.71	0.54	2.69	2,035	4,506	6,560
Iowa Telecomm	0.03	0.00	0.86	0.27	2.36	413	326	739
Qwest	0.00	0.00	0.53	0.15	1.41	20,509	37,988	58,539
SBC	0.00	0.00	0.44	0.17	1.25	71,493	76,858	149,482
Sprint	0.02	0.00	0.60	0.13	1.52	6,978	18,896	26,128
Valor	0.54	0.11	0.78	0.34	2.98	358	916	1,274
Verizon	0.02	0.00	0.42	0.23	1.35	53,826	128,385	182,882
Price Caps	0.01	0.00	0.44	0.20	1.33	183,968	325,891	506,268
NECA	0.20	0.20	1.45	0.83	5.08	11,755	21,652	18,521
All Price Caps and NECA	0.02	0.01	0.48	0.22	1.46	195,723	347,543	524,789

\* This table shows average rates (weighted by minutes of use) for all local exchange carriers (LECs) that file access tariffs subject to price-cap regulation and all LECs in the National Exchange Carrier Association (NECA) pool. Rates are composites of all regions and subsidiaries of each local exchange carrier. No information is available for those carriers that are not in the NECA pool, but are subject to rate-of-return regulation. The average rates reported here do not include the average revenue per minute from subscriber line charges (SLCs) or primary interexchange carrier charges (PICCs), which are reported in Table 7.14

† Non-traffic sensitive charges include charges assessed on a per-month per-unit basis. Prior to 07/01/94 these charges were included in the average traffic-sensitive rates.

‡ The total charge per conversation minute consists of charges on the originating end of the call, which are adjusted for dialing and call setup time, plus charges on the terminating end. Originating charges per conversation minute equal the carrier common line charge per originating access minute plus the traffic-sensitive charge per switched minute, both multiplied by 1.07 to account for dialing and call setup time, plus the non-traffic-sensitive charge per switched minute. Terminating charges per conversation minute equal carrier common line charges per terminating access minute plus both traffic-sensitive and non-traffic-sensitive charges per switched minute.

Source: Access tariff filings.