



# EPA's Interactive Training for Response to Radiation Alarms at Metal Processing Facilities

Debbie Kopsick and Renelle Rae

## Problem



- How many meltings of radioactive sources have occurred?
- What is the average cost of cleanup from a source melting?
- Worldwide, how many deaths have occurred from improper handling of an orphan source?

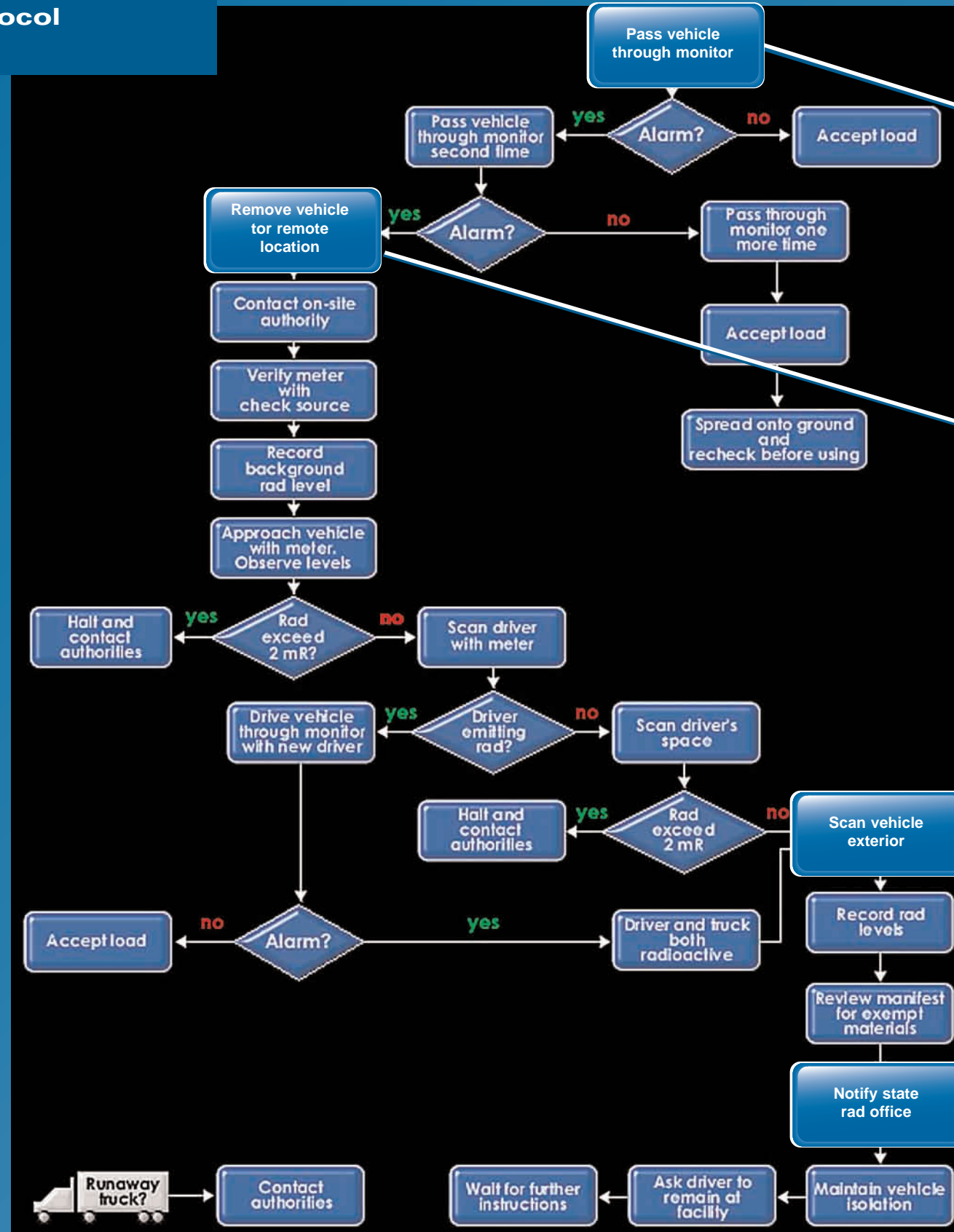
To help prevent unwanted sources of radiation from entering a metal processing facility, EPA developed a CD ROM-based training program that uses interactive modules to illustrate the procedures and skills necessary to correctly respond to a radiation alarm.

## Objectives of the Program

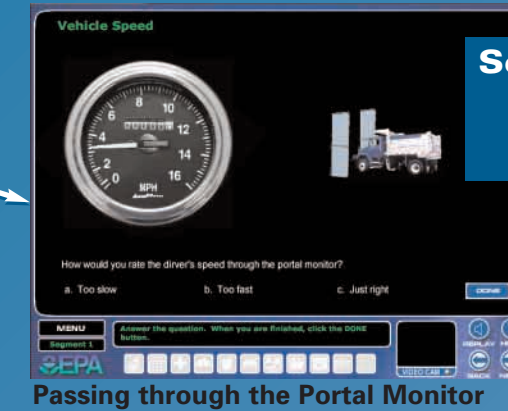


- Understand consequences of allowing radioactive material to enter facility
- Recognize common errors that can occur during site entry of metal
- Understand response protocol
- Be able to perform four basic response skills

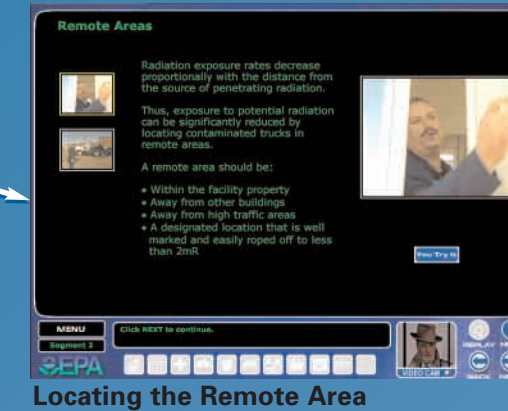
## Response Protocol



## Segments



Passing through the Portal Monitor



Locating the Remote Area

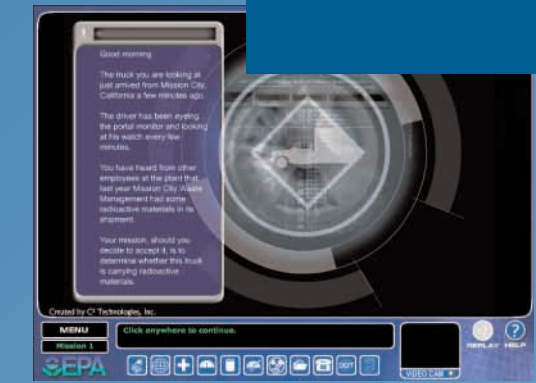


Using the Handheld Survey Meter



Reporting Incidents

## Missions



The Missions section allows application of knowledge gained in possible scenarios.

## Resources

State	Telephone #	24 Hr Phone #	Fax
Alabama	334/206-5391	334/242-4378	334/206-5387
Alaska	907/269-7942	907/561-4393	907/269-6290
Arizona	602/255-4845	602/223-2212	602/437-0705
Arkansas	501/661-2301	501/661-2136	501/661-2468
California	916/322-3482	800/852-7550	916/324-3610
Colorado	303/692-3038	303/344-9989	
Connecticut	860/424-3029	860/424-333	860/424-4055
Delaware	302/739-3787		302/739-3839
Florida	407/297-2095		407/297-2085

Available contact information and incident forms