

# Performance Track Final Progress Report

## About Performance Track

The U.S. Environmental Protection Agency's National Environmental Performance Track program (Performance Track) was a public-private partnership that encouraged continuous environmental improvement through environmental management systems, community outreach, and measurable results. Performance Track was a voluntary approach to recognize and drive environmental excellence among private and public facilities by encouraging facilities with strong environmental records to go above and beyond their legal requirements. In partnership with EPA, members voluntarily set measurable goals to improve the quality of our nation's air, water, and land. Members included facilities of major corporations, small businesses, and public entities.

In March 2009, EPA decided to halt the Performance Track program. The program was in existence for almost nine years. This report summarizes highlights of the program including program growth, changes, and environmental results.

*For more information on Performance Track and its members, please visit [www.epa.gov/performance-track](http://www.epa.gov/performance-track).*

In 2008, despite the economic downturn across the country, Performance Track continued to grow. The program welcomed 84 new members in 2008, increasing the membership base to 547. Performance Track's renewal rate also remained very high at 85 percent. These sustained trends demonstrated

a commitment to improving environmental performance even when budgets are tight.

Over the life of the program, the combined environmental effort of all Performance Track member facilities has resulted in cumulative reported reductions of many environmental indicators, including reductions in water use by 2.87 billion gallons, greenhouse gas emission reductions of 366,948 metric tons of carbon dioxide equivalent, and conservation of 24,864 acres of habitat. Many of the members' achievements address issues that are not covered by current regulations.

Continuous improvement was a core value of Performance Track for both members and the program itself. Over the life of the program many changes to membership criteria and program implementation were made. In 2008, EPA received feedback from stakeholders indicating that additional structure and transparency in the process by which members select goals could increase program integrity and maximize environmental improvements at member facilities. As a result, the program developed new goal selection criteria and designated several key areas as core environmental indicators.

The introduction of challenge goals at the national and regional levels served as another way to maximize environmental improvements by focusing members' goal selection on national and regional priorities. Working with the Office of Water, Performance Track established a new challenge goal for protecting impaired waters from further degradation. Performance Track also collaborated with other EPA program offices to launch challenge goals for reducing greenhouse gas emissions and priority chemicals, and worked with a group of non-governmental organizations to create a challenge goal for enhancing and restoring habitat.

The Performance Track program coordinated closely with states as they developed and implemented complementary performance-based programs. New partnerships with Arizona and West Virginia were confirmed in 2008 through the signing of Memoranda of Agreement (MOA). In total, 14 states had signed MOA with EPA and more than 20 state-level performance-based programs are in operation across the country.

During its final year, Performance Track designated Xerox Corporation as a Corporate Leader based on the company's longstanding commitment to corporate environmental leadership. Other Corporate Leaders included Baxter Healthcare Corporation, Xanterra Parks and Resorts, Johnson & Johnson, and Rockwell Collins. EPA created the Performance Track Corporate Leader designation in 2004 as a way to recognize companies that exhibit environmental stewardship at the corporate level.

Performance Track Corporate Leaders offered the program's nearly 550 members a steady flow of ideas for improving performance and future goal selection based on their own leading practices. Along with the recognition that the program offered its members, this cross-pollination of ideas for best practices and innovation in environmental performance was central to the program membership.

EPA plans to advance the Agency's understanding of environmental leadership programs and inform its future efforts to recognize and drive environmental excellence through the creation of a subcommittee under the National Advisory Committee on Environment and Technology in 2009 and a study by the RAND Corporation to be completed in 2009.

# Performance Track

## a holistic approach to environmental improvement

Rather than focusing on just one specific pollutant or environmental issue, Performance Track worked with members to improve performance among a variety of environmental indicators, throughout the product lifecycle. The figure at right displays the indicators around which members set ambitious “stretch” goals, challenging them to innovate and develop new practices. Members’ cumulative results are displayed next to each indicator.

The results highlighted here cover the period 2000-2007 (the last year for which data were reported) for members that completed at least one three-year term in the program. Detailed results for all indicators, calculation methodology, and results caveats are available at [www.epa.gov/performance-track/results](http://www.epa.gov/performance-track/results).

### UPSTREAM



#### Material Procurement

Hazardous/Toxic Components	-192 tons ✓
Recycled Content	-572 tons ✓



#### Suppliers’ Environmental Performance

-2,674 tons ✓

### INPUTS



#### Material Use

Materials Used	-48,888 tons ✓
Hazardous Materials Used	+56,543 tons
Packaging Materials Used	+390 tons
Use of Reused-Recycled Materials	-301,808 tons ✓



#### Water Use

Total Water Used	-2,871,860,883 gallons ✓
------------------	--------------------------



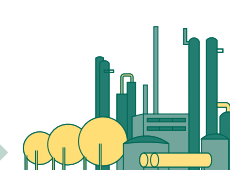
#### Energy Use

Non-Transportation Energy Use	-6,701,303 MMBtu ✓
Transportation Energy Use	+29,009 gallons



#### Land and Habitat

Land and Habitat Conservation	+24,864 acres ✓
-------------------------------	-----------------



**CUMULATIVE IMPROVEMENTS**  
*in perspective*



Energy savings to power **73,000 homes** for one year



Greenhouse gas reductions to offset the emissions of **67,000 cars** for one year



Solid waste reductions equivalent to the amount produced by **576,000 households** for one year

# Performance Track Members' Results 2000-2007

## NONPRODUCT OUTPUTS



### Air Emissions

Greenhouse Gases	-366,948 metric tons of CO <sub>2</sub> equivalent	✓
VOCs	-4,884 tons	✓
Air Toxics	-925 tons	✓
Carbon Monoxide	-4 tons	✓
NOx	-15,656 tons	✓
PM-10	+50 tons	
SOx	-43,083 tons	✓
Radiation	-814 curies	✓



### Waste

Non-Hazardous Waste Generation	-1,261,006 tons	✓
Hazardous Waste Generation	-68,146 tons	✓



### Discharges to Water

Discharges of BOD, COD, TSS, Nutrients, Sediments	-35,581 tons	✓
Discharges of Toxics	-3,361 tons	✓



### Noise

	-52 dBA	✓
--	---------	---

## DOWNSTREAM



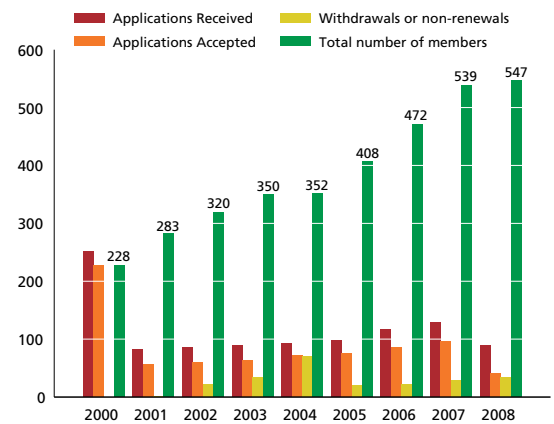
### Products

Expected Lifetime Waste from Product Use	-100 tons	✓
Waste to Air, Water, Land from Disposal or Recovery	NA	

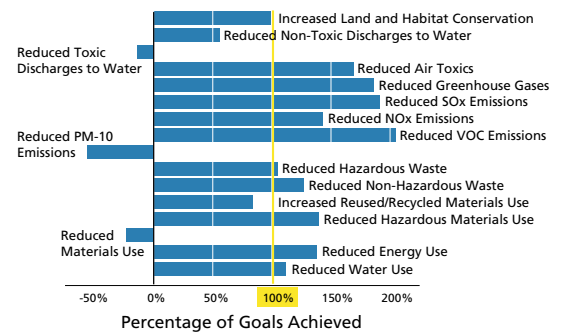
#### Key

- + Cumulative increase from baseline
- Cumulative decrease from baseline
- ✓ Improvement in performance
- NA No data were reported on this indicator by Performance Track members.

By the end of 2008, Performance Track had 547 members.



From 2000-2007, Performance Track members collectively made progress toward or exceeded nearly all of their goals.



# Performance Track and Water

Many Performance Track members' achievements addressed issues that are vital to the health of our planet but not covered by current regulations. The use of water is one of these issues, and represents an area in which Performance Track members made significant improvements.

The use, reuse, and recycling of water have become critical areas of improvement for facilities across the United States. Not only must water be sourced carefully, it requires immense quantities of energy to treat and transport. To effectively manage this critical resource, Performance Track members implemented a variety of practices in water conservation, treatment, and reuse, through improvements made in the Water Use and Discharges to Water goal categories. Many members will continue these efforts even though the program has been halted.

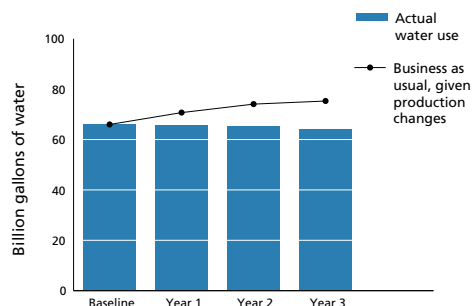
## Selected Achievements by Performance Track Members

### Total Water Use

- At its Ocotillo, Arizona, manufacturing and development facility, Intel has had an extensive water conservation and recycling program since the facility broke ground in the mid-1990s. Careful planning and collaboration with the City of Chandler gave Intel room to expand while ensuring that the area's water resources would be managed sustainably. Working with the city, Intel recharged approximately 1 billion gallons of municipal water back into the aquifer between 2002 and 2004. The facility also reuses treated water from the site and treated water from a nearby public-owned treatment plant for lawn and ground irrigation. Intel continues its efforts to reduce water use.
- DuPont Mt. Clemens in Mt. Clemens, Michigan, reduced its water use by nearly 3.5 million gallons from 2006 to 2007 through process improvements, improved treatment, and conservation measures. The facility also treated and reused water onsite in cooling towers. DuPont Mt. Clemens continues its efforts to reduce water use.
- Novozymes in Franklinton, North Carolina, reduced its water use by 35 percent between 2003 and 2006, on a

normalized basis, through the installation of improved water seal control systems on large vacuum pumps, improved water recycling systems for membrane filters, increased conservation by operators, and using alternative sanitizer that requires less water. Novozymes continues its efforts to reduce water use.

Together, 179 Performance Track members reduced their water use by 2.87 billion gallons.



Results cover the years 2000-2007 and include only members that set a goal for this indicator and completed at least one three-year membership term.

### Discharge to Water

- Arizona Chemical in Savannah, Georgia, aimed to reduce discharges of biological oxygen demand (BOD) by 30 percent between 2002 and 2006 through installation of pre-screening equipment that will improve the recovery of oil from brine, significantly reducing losses of high-BOD material to the wastewater system. Arizona Chemical continues its efforts to reduce its BOD discharges and was also exploring a market for spent brine, which is now used by paper mills to recover saltcake.

### Challenge Goals

Performance Track partnered with EPA's Office of Water to offer national challenge goals in water use reduction and reduction in discharges to impaired waters. Several EPA Regions also established challenge goals to reduce specific discharges to water:

- Region 2 challenged facilities to address nutrient discharges (phosphorous and nitrogen) and non-point sediment runoff into watersheds.
- In Region 3, facilities were challenged to reduce sediments from runoff, a specific set of toxic discharges, or a specific set of nutrients.

### Alternate Goals

Members have also set alternate goals to protect watershed health. Examples of this work could include the following:

- Supporting collection and reporting of ambient water quality data.
- Decreasing impermeable pavement, installing "green" roofs, increasing bioretention, increasing on-lot treatment, using stormwater as a resource (e.g., for cooling water, irrigation water), and minimizing exposure of industrial chemicals or activities to the elements.

Kodak Colorado Division of Windsor, Colorado, set an alternate goal to monitor and analyze ambient water quality in the Cache La Poudre River. Little information exists about the ambient water quality for many U.S. waterbodies. Access to water quality data can enhance the understanding of the health of a river and inform decision-making about how to best protect it.

Kodak Colorado Division and other dischargers to segments of the Cache La Poudre River formed an ambient water quality monitoring group in cooperation with the Colorado Department of Public Health and Environment. In 2007, the group developed the monitoring plan and signed an official agreement to provide ambient water quality monitoring. This group will provide coordinated and accurate data about the water quality along 45 river miles year round, which will be available to members of the monitoring group, regulators, and the public.

**EPA 100-R-09-003**  
**U.S. EPA, Office of Policy, Economics,**  
**and Innovation (MC 1807-T)**  
[www.epa.gov/performancectrack](http://www.epa.gov/performancectrack)  
**1-888-339-PTRK (1-888-339-7875)**

# Performance Track Members as of 2009

## Performance Track Corporate Leaders

**Baxter Healthcare Corporation**  
**Johnson & Johnson**  
**Rockwell Collins**  
**Xanterra Parks and Resorts**  
**Xerox Corporation**

173rd Fighter Wing, Kingsley Field,  
 Air National Guard\*  
 3M Alexandria  
 3M Brownwood\*  
 3M Columbia Missouri  
 3M Company - Austin Research Boulevard Site  
 3M Company - Valley  
 3M Company, Aberdeen  
 3M Company, Brookings  
 3M Cordova  
 3M Cumberland  
 3M Cynthia  
 3M Decatur  
 3M ESPE\*  
 3M Guin\*  
 3M Knoxville IA  
 3M Menomonee  
 3M Nevada  
 3M New Ulm\*  
 3M Petaluma  
 3M Prairie du Chien  
 3M Unitek Corporation - Monrovia, California  
 Aaron Oil Company, Inc.\*  
 ACL Transportation Services LLC  
 Acushnet Rubber Co., Inc., D/B/A PRECIX\*  
 Advanced Sterilization Products\*\*  
 AFCO (Associated Fuel Pump Systems Corporation)  
 Akzo Nobel Aerospace Coatings\*  
 Alliant Techsystems Inc., Lake City  
 Ammunition Division  
 Aloe Vera of America, Inc.  
 American Synthetic Rubber Company, LLC  
 Analog Devices, Inc. -  
 Wilmington Manufacturing  
 Andersen Corporation\*  
 Applied Materials  
 Arizona Chemical - Dover, Ohio  
 Arizona Chemical - Panama City  
 Arizona Chemical - Pensacola  
 Arizona Chemical - Port St. Joe Plant  
 Arizona Chemical- Savannah, GA  
 ASMO North Carolina, Inc  
 Aspen Skiing Company  
 Atlas Copco Drilling Solutions LLC  
 Badlands Inn, LLC  
 BAE SYSTEMS Controls  
 BAE SYSTEMS Information and  
 Electronic Systems Integration\*  
 Baker Petrolite - Rayne Blend Plant\*  
 Baker Petrolite- Houston Blend Plant  
 Ball Metal Beverage Container Corp.  
 "Golden Facility"  
 Bandelier Trading Company  
 Barksdale Air Force Base  
 BASF Corporation - Belvidere, NJ  
 Bath Iron Works  
 Battelle Columbus Ohio\*  
 Baxter Caribe, Inc.\*\*  
 Baxter Healthcare - Cleveland, MS†  
 Baxter Healthcare - McGaw Park†  
 Baxter Healthcare - Round Lake  
 Technology Park†  
 Baxter Healthcare - Tampa (Largo)†  
 Baxter Healthcare Corp Thousand Oaks†  
 Baxter Healthcare Corp. of Puerto Rico,  
 Jayuya Facility†  
 Baxter Healthcare Corporation, Irvine, CA†  
 Baxter Healthcare Corporation,  
 Mountain Home, AR†

Baxter Healthcare of Puerto Rico\*\*  
 Baxter Pharmaceutical Solutions, LLC†  
 Baxter/Hayward†  
 Bay County Waste to Energy Facility  
 Bentley Prince Street, Inc.  
 BFGoodrich Tire Manufacturing-Opelika, AL  
 BFGoodrich Tire Manufacturing-  
 Tuscaloosa, AL  
 Big Bend Resorts/Chisos Mountains Lodge  
 BioSense Webster, Inc.\*\*  
 Blue Ridge Paper Products - Canton Mill  
 BMW Manufacturing Co., LLC.\*  
 Boise White Paper LLC - Wallula  
 Boston Scientific - Maple Grove  
 Weaver Lake Campus  
 Bridgestone/Firestone North American Tire  
 LLC - Wilson, NC  
 Bridgestone/Firestone North American Tire  
 LLC - Warren County\*  
 Bridgestone/Firestone North American Tire  
 LLC - Bloomington, IL  
 Bridgestone/Firestone North American Tire  
 LLC - LaVergne  
 Bridgestone/Firestone South Carolina\*  
 Bristol-Myers Squibb Company\*  
 Bristol-Myers Squibb PRI - Wallingford, CT  
 Brookhaven National Laboratory  
 Brooklyn Navy Yard Cogeneration Partners  
 Calville Bay Resort & Marina  
 Capulin Volcano National Monument  
 Cardone Industries, Inc.  
 Caribbean Refrescos Inc.  
 CCDA Waters, LLC  
 Centocor, Inc.\*\*  
 Charleston Air Force Base  
 Chesterfield County Waste and  
 Resource Recovery  
 Chicago White Metal Casting, Inc.\*  
 Ciba Specialty Chemicals Corporation,  
 Newport Site\*  
 City of Dallas  
 City of Lawrence Wastewater Utility  
 City of Manassas Maintenance Garage  
 City of Scottsdale  
 Coca-Cola North America - Apopka, FL  
 Coca-Cola North America - Columbus  
 Syrup Plant  
 Coca-Cola North America - Dallas Syrup Plant  
 Coca-Cola North America - Dunedin Facility  
 Coca-Cola North America - Lehigh Valley Plant  
 Coca-Cola North America - Ontario  
 Syrup Plant  
 Coca-Cola Northampton  
 Colonial Acres Golf Course  
 Columbia Vista - Evergreen  
 Columbia Vista - Fruit Valley  
 Comanche Peak Nuclear Power Plant  
 Concurrent Technologies Corporation\*  
 Consumer Products Company†  
 Cordis Corp.\*\*  
 Cordis Corporation\*\*  
 Cordis Neurovascular, Inc.\*\*  
 Corning Wilmington Optical Fiber Facility  
 Cottonwood Cove Resort & Marina  
 Covanta Babylon Inc.  
 Covanta Bristol, Inc.  
 Covanta Company of Southeastern  
 Connecticut  
 Covanta Fairfax, Inc.  
 Covanta Haverhill, Inc.  
 Covanta Hempstead Company  
 Covanta Hennepin Energy  
 Resource Company, L.P.  
 Covanta Hillsborough, Inc.  
 Covanta Honolulu Resource Recovery Venture  
 Covanta Huntington, LP  
 Covanta Huntsville, Inc.  
 Covanta Indianapolis, Inc.  
 Covanta Kent, Inc.  
 Covanta Lake II, Inc.  
 Covanta Lee, Inc.  
 Covanta Marion, Inc.  
 Covanta Mid-Connecticut, Inc.  
 Covanta Montgomer, Inc.  
 Covanta Niagara

Covanta of SEMASS  
 Covanta Onondaga LP  
 Covanta Pasco  
 Covanta Projects of Wallingford  
 Covanta Stanislaus, Inc.  
 Cutler Hammer Electrical Co.  
 Cytec Clean Inc.  
 Dallas/Fort Worth International Airport  
 Dassault Falcon Jet Corp - Little Rock  
 Decker Manufacturing Corporation  
 Defense Supply Center Richmond  
 Delta Faucet Company of Tennessee  
 DENSO Manufacturing Michigan, Inc.\*  
 Denver International Airport  
 DePuy Orthopaedics, Inc.\*\*  
 DePuy, Inc.\*\*  
 Doughton Park Bluffs Lodge Forever Resorts  
 Dow West Virginia Operations,  
 South Charleston Site  
 DPP - Griffin  
 DuPont - Spruance Plant  
 DuPont EKC Technology  
 DuPont Fort Madison Plant  
 DuPont Front Royal  
 DuPont Mt Clemens Plant  
 Durango-McKinley Paper Company\*  
 Dyess Air Force Base  
 E & T CONTROLS, INC.  
 Eaton Corporation Kearney Nebraska,  
 MDH Company  
 Eaton Hydraulics  
 Eaton Hydraulics Operation - Searcy, Arkansas  
 Elanco Augusta Technology Center  
 Ellsworth Air Force Base  
 Elmendorf Air Force Base  
 EMCO Enterprises, Inc  
 Endicott Interconnect Technologies, Inc.\*  
 EPA Mid-Atlantic Regional Office Facility  
 Epic Resins  
 Epon Portland Inc.\*  
 ETHICON - San Angelo\*\*  
 Ethicon Endo-Surgery, Albuquerque NM\*\*  
 Ethicon Endo-Surgery, Inc.\*\*  
 ETHICON LLC\*\*  
 ETHICON, Inc.\*\*  
 Ethicon, Inc.\*\*  
 Evelyn Hill Inc  
 Evergreen Packaging Incorporated -  
 Pine Bluff Mill  
 Evinik Cyro LLC  
 Fairchild Semiconductor Corporation  
 Fairholme Store & Marina  
 Federal-Mogul - Boyertown  
 Fenwal Blood Technologies  
 Fenwal Blood Technologies, Maricao PR  
 Filtrona Extrusion  
 Firestone Agricultural Tire Company\*  
 Firestone Building Products - Aurora  
 Firestone Building Products - Corsicana  
 Firestone Building Products Company -  
 DeForest  
 Firestone Building Products Company -  
 Salt Lake  
 Firestone Building Products Company -  
 Youngwood  
 Forever Resorts - Corporate Office  
 Forever Resorts as Black Canyon/  
 Willow Beach River Adventures  
 Forever Resorts at Grand Canyon Lodge  
 Forever Resorts Badlands Lodge, LLC  
 Forever Resorts Fun Country Marine Industries  
 Forever Resorts Rocky Mountain Park Inn  
 Forever Resorts Sun Country Marine West  
 Forever Resorts-Rocky Mountain Park Company  
 Fort Benning  
 Fort Lewis, Public Works  
 Fraser Papers Ltd  
 FRC East  
 FRC Southwest  
 Freescale Semiconductor, Inc. - Chandler  
 Freescale Semiconductor, Inc. - Tempe  
 Freescale Semiconductor, Inc., Ed Bluestein  
 Freescale Semiconductor, Inc., Oak Hill  
 Frito-Lay, Inc. - Rancho Cucamonga, CA  
 Frito-Lay, Inc. - Canton, Ohio

Frito-Lay, Inc. - Gothenburg, NE  
 Frito-Lay, Inc. - Jonesboro, AR  
 Frito-Lay, Inc. - Orlando, FL  
 Frito-Lay, Inc. - Pulaski, TN  
 Frito-Lay, Inc. - Wooster, Ohio  
 Frito-Lay, Inc. - Sidney, Illinois  
 FUJIFILM Hunt Chemicals U.S.A., Inc.\*  
 FUJIFILM Hunt Chemicals U.S.A., Inc. -  
 Dayton, TN  
 Furnace Creek Inn & Ranch Resort†  
 Georgia-Pacific Chemicals, LLC - Albany, OR  
 Georgia-Pacific Chemicals, LLC - Vienna, GA  
 Georgia-Pacific Chemicals, LLC - Russellville, SC  
 Georgia-Pacific Chemicals, LLC - Conway, NC  
 Georgia-Pacific Chemicals, LLC - Columbus, OH  
 Gerdau Ameristeel Wilton  
 Global Pharmaceutical Supply Group Vacaville†  
 Goss International Americas INC.  
 Fort Worth Operations  
 Grand Canyon National Park Facility  
 Management Division  
 Grand Teton Lodge Company  
 Grundfos Pump Manufacturing Corporation\*  
 Gwaltney of Smithfield, Ltd.  
 Health Care Systems Inc.\*\*  
 Henkel Corporation, Seabrook, NH\*  
 Hewlett Packard Caribe BV  
 Hewlett Packard Corvallis Oregon Site  
 Hewlett Packard-Boise Site  
 Hitachi Automotive Products  
 Hunter Douglas Tupelo Center  
 Hurricane Ridge Lodge  
 IBM - Burlington\*  
 IBM - Thomas J Watson Research Center  
 Ideal Jacobs Corporation  
 Indiantown Cogeneration L.P.\*  
 Intel Arizona - Ocotillo Campus  
 Intel Corporation - DuPont Campus  
 Intel Corporation - New Mexico  
 Intel Massachusetts, Inc.  
 InterfaceFABRIC, Inc., Guilford Facility\*  
 InterfaceFLOR, LLC  
 International Paper - Franklin Mill  
 International Paper - Vicksburg Mill  
 International Paper - Courtland Mill  
 International Paper - Eastover Mill  
 International Paper - Georgetown Mill  
 International Rectifier - El Segundo  
 International Truck and Engine Corporation\*  
 INX International Ink Co  
 Isle Royale Resorts  
 Itron Inc.  
 J&J - Merck Consumer Pharmaceuticals\*\*  
 Janssen Ortho LLC\*\*  
 Janssen Pharmaceutica\*\*  
 John Crane, Inc. Cranston, RI Division  
 John Deere Davenport Works  
 John Deere Thibodaux  
 John Zink Company LLC  
 Johnson & Johnson Pharmaceutical  
 Research & Development, L.L.C. La Jolla\*\*  
 Johnson & Johnson Pharmaceutical  
 Research & Development, L.L.C.\*\*  
 Johnson & Johnson World Headquarters\*\*  
 Karl Schmidt Unisia, Inc. Fort Wayne Facility  
 Karl Schmidt Unisia, Inc. Marinette Facility  
 Kent County Regional Wastewater  
 Treatment Facility  
 King Industries, Inc.  
 Kodak Colorado Division  
 Lafarge Aggregates SE - Douglasville Quarry\*  
 Lake Amistad Resort And Marina  
 Lake Crescent Lodge  
 Lake Don Pedro Marina, LLC  
 Lake Mead RV Village  
 Lake of the Ozarks Marina  
 Lake Oroville Marina, LLC  
 Lake Roosevelt Vacations, Inc.  
 Lehigh Technologies of GA  
 LifeScan LLC\*\*  
 LifeScan, Inc.\*\*  
 LifeSpan Technology Recycling- Denver, CO  
 Lincoln Industries  
 Lockheed Martin -  
 Maritime Security & Ships Systems

# Performance Track Members as of 2009, continued

Lockheed Martin Aeronautics Company - Fort Worth	New Hampshire Ball Bearings, Inc.* New Hampshire Ball Bearings, Inc. New Hampshire Ball Bearings, Inc., Astro Division	SEH America Sensata Technologies* Seymour Johnson Air Force Base Shaw Plant 13 Shaw Plant 15X Shaw Plant Z	U.S. Postal Service Central Massachusetts Processing and Distribution Center
Lockheed Martin Aeronautics Company - Marietta	NewPage Duluth Mill Newport Computer Service Inc.	Sheppard Air Force Base Signal Mountain Lodge Siltronic Corporation*	U.S. Postal Service Eastern Maine Processing and Distribution Facility
Lockheed Martin Aeronautics Company - Palmdale	Nitinol Devices and Components** Noramco-Athens**†	Smithfield - Elon Smithfield Transportation Co - Tar Heel Smithfield Transportation Co. Smithfield Division	U.S. Postal Service Elmira New York Vehicle Maintenance Facility
Lockheed Martin Maritime Systems and Sensors, Liverpool, NY*	Northrop Grumman St. Augustine Site Novozymes North America, Inc.	Southco, Inc - Honeoye Falls Facility Southfork Asset Management Southfork Ranch Spartan Steel Coating	U.S. Postal Service Manchester, NH Vehicle Maintenance Facility
Lockheed Martin Missiles and Fire Control	Nucor Steel - Nebraska Nucor Steel Auburn Inc	Stanley Fastening Systems Stanley Hydraulic Tools Stanley Tools Cheraw Stanley Tools New Britain Plant	U.S. Postal Service New Haven CT Vehicle Maintenance Facility
Lockheed Martin Missiles and Fire Control - Dallas Operation	Oak Ridge National Laboratory - U.S DOE Olin Chlor Alkali Charleston Ortho Biologics, LLC**†	Stanley Tools Pittsfield Plant Swiss Re - Armonk Symmetry Medical - New Bedford* TABC, Inc.	U.S. Postal Service Portsmouth, NH Processing and Distribution Facility
Lockheed Martin Missiles and Fire Control - Orlando	Ortho Pharmaceuticals, a division of Janssen Ortho LLC**†	Taft Manufacturing Company* TDK Components USA, Inc.* TEC1	U.S. Postal Service Providence Rhode Island Vehicle Maintenance Facility
Lockheed Martin MS2, Moorestown, NJ*	Ortho-Clinical Diagnostics**† Ortho-Clinical Diagnostics**† Ortho-McNeil Pharmaceutical**†	Temple Inland-Maysville Paper Mill Tenneco Automotive Operating Company, Inc. Teradyne, Inc.- NR*	U.S. Postal Service Rochester New York Vehicle Maintenance Facility
Lockheed Martin Space Systems Company, Watertown Plant*	Osram Sylvania Products Inc. Pacific Northwest National Laboratory Port 500 Facility, Philip Morris USA PerkinElmer Optoelectronics*	The Coca-Cola Company - Truesdale The Goodyear Tire & Rubber Company - Topeka Plant	U.S. Postal Service Rochester, New York Processing & Distribution Center
Lockheed Martin Systems Integration-Owego*	Pfizer Incorporated Terre Haute Pfizer Pharmaceuticals LLC Pfizer Pharmaceuticals LLC - Caguas Operations Pfizer Pharmaceuticals LLC - Vega Baja, PR	TOYOTA MOTOR MANUFACTURING KENTUCKY, INC. Toyota Motor Manufacturing West Virginia, Inc.	U.S. Postal Service Schenectady, NY Main Office
L'Oreal USA - Piscataway Manufacturing	Pfizer, Inc - Franklin, OH Pfizer, Inc - Lincoln, NE Pfizer, Inc - White Hall	Toyota Motor Manufacturing, Indiana Trinity Center Marina Trinity Lake Resort & Marina	U.S. Postal Service Southern Connecticut Processing and Distribution Center
Louisiana Pacific - Middlebury, Indiana	Pfizer, Inc - White Hall Pfizer, La Jolla Laboratories Pictorial Offset Corporation Pine Grove Landfill, Inc.	Tyco Healthcare Group LP, Ludlow U.S. Borax, Inc.-Boron Operation U.S. Coast Guard Air Station Cape Cod*	U.S. Postal Service Southern Maine Processing and Distribution Center
Louisiana-Pacific Corporation, Carthage OSB Plant	Pinewood Cove Resort PING Pittsburgh Glass Works, LLC - Works 8 Port of Houston Authority Barbours Cut Terminal	U.S. Department of Energy & DynMcDermott Petroleum Operations Company* U.S. Department of Energy, West Valley Demonstration Project*	U.S. Postal Service Springfield MA Vehicle Maintenance Facility
Louisiana-Pacific, Hanceville OSB	Port of Houston Authority Central Maintenance Facility	U.S. FAA Mike Monroney Aeronautical Center U.S. Postal Service - Hartford Processing and Distribution Center*	U.S. Postal Service Springfield, MA Bulk Mail Center and Processing & Distribution Center
Louisiana-Pacific, Houllon OSB	Portland VA Medical Center Pratt & Whitney - Cheshire Pratt & Whitney - HMI - Clayville Pratt & Whitney - North Berwick Parts Center Pratt & Whitney / Pratt & Whitney Rocketdyne - Florida	U.S. Postal Service - Seattle Bulk Mail Center U.S. Postal Service - South Sound Distribution Delivery Center	U.S. Postal Service Stamford CT Processing and Distribution Center
Louisiana-Pacific, Jasper OSB	PRIZIM Inc. PRO-TEC COATING COMPANY Pull-A-Part of Conley, LLC Pull-A-Part of Norcross, LLC	U.S. Postal Service Albany New York Vehicle Maintenance Facility	U.S. Postal Service Stamford CT Vehicle Maintenance Facility
Louisiana-Pacific, Roxboro	Qimonda North America Raymond-Muscatine Inc. Raytheon, Aurora Reaxis Incorporated Republic Metals Corporation	U.S. Postal Service Albany, New York Processing and Distribution Center	U.S. Postal Service Springfield, MA Vehicle Maintenance Facility
Louisiana-Pacific, Tomahawk, Engineered Wood Siding	Ricoh Electronics, Inc. - Georgia Facility Ricoh Electronics, Inc. - OMG Ricoh Electronics, Inc. - RSG / TMG, Ca. Rio Grande Village Store & RV Park Robert J. Dole VA Medical & Regional Office Center	U.S. Postal Service Binghamton NY Vehicle Maintenance Facility	U.S. Postal Service Springfield, MA Bulk Mail Center and Processing & Distribution Center
Louisiana-Pacific, Two Harbors, Engineered Siding	Rockwell Collins Inc. - Wichita Service Center† Rockwell Collins, Inc. - 35th Street Operations† Rockwell Collins, Inc. - Bellevue Operations**† Rockwell Collins, Inc. - C Avenue Operations† Rockwell Collins, Inc. - Coralville Operations**† Rockwell Collins, Inc. - Decorah Operations**† Rockwell Collins, Inc. - Manchester Operations**†	U.S. Postal Service Binghamton, New York Processing and Distribution Facility	U.S. Postal Service Stamford CT Processing and Distribution Center
Louisiana-Pacific, Wilmington EWP	Rockwell Collins, Dallas Service Center† Rohm and Haas - Kankakee Polymer Plant* Rohm and Haas Electronic Materials, LLC* Rohm and Haas - La Mirada Plant Rough Canyon Marina LLC Sandia National Laboratories SavATree	U.S. Postal Service Bridgeport CT Post Office U.S. Postal Service Brockton Processing Distribution Center	U.S. Postal Service Stamford CT Vehicle Maintenance Facility
Lyman Morse Boatbuilding	Schering-Plough Animal Health Corporation - Baton Rouge	U.S. Postal Service Brockton Vehicle Maintenance Facility	U.S. Postal Service Springfield, MA Bulk Mail Center and Processing & Distribution Center
Mabry Mill / Rocky Knob Cabins	Schering-Plough HealthCare Products, Inc. Schering-Plough Products, L.L.C. Las Piedras Operations	U.S. Postal Service Buffalo New York Processing and Distribution Center	U.S. Postal Service Stamford CT Processing and Distribution Center
MacArthur Waste to Energy		U.S. Postal Service Buffalo New York Vehicle Maintenance Facility	U.S. Postal Service Stamford CT Vehicle Maintenance Facility
Madison Chemical Co., Inc.*		U.S. Postal Service Cambridge MA Central Square Post Office	U.S. Postal Service Stamford CT Vehicle Maintenance Facility
Madison Precision Products owned by the METTS Corporation			U.S. Postal Service Syracuse New York Processing & Distribution Center
Maker's Mark Distillery, Inc.			U.S. Postal Service Syracuse New York Vehicle Maintenance Facility
Mammoth Cave Hotel Management and Engineering Services LLC			U.S. Postal Service Tacoma Mail Processing and Distribution Center
Marathon Petroleum Company - Louisiana Refinery Division			U.S. Postal Service Utica New York Processing and Distribution Facility
Marathon Petroleum Company, LLC - Corporate Office			U.S. Postal Service Utica New York Vehicle Maintenance Facility
Marina at Lake Meredith			U.S. Postal Service Waterbury Vehicle Maintenance Facility
McNeil Consumer & Specialty Pharmaceuticals**†			University of Texas Medical Branch UPM - Blandin Mill
McNeil Consumer Healthcare**†			V&M STAR - Houston V&M STAR - Youngstown Valvoline
McNeil PPC**†			Vectron International, Inc. Vermeer Corporation
MD Anderson Cancer Center			Verso Paper, Androscooggin Mill** Verso Paper, Bucksport Mill Vistakon**†
Memory Experts International, Inc.			WaferTech LLC
Michelin NA - Sandy Springs (US2)			Washington Group International - ANCDF Washington State University
Michelin NA - Starr (US8)			Xanterra at Crater Lake National Park† Xanterra at Mt. Rushmore National Memorial† Xanterra at Rocky Mountain National Park† Xanterra Parks & Resorts at Bryce Canyon Lodge† Xanterra Parks & Resorts at Yellowstone National Park†
Michelin North America - Norwood, MATC			Xanterra Parks & Resorts at Zion Lodge† Xanterra South Rim, L.L.C.† Xerox - Webster, NY† Xerox Corporation - Cincinnati, OH† Xerox Corporation - El Segundo† Xerox Office Group - Wilsonville† Xerox Oklahoma City Supplies Manufacturing Plant†
Michelin North America - Spartanburg Manufacturing			Yamaha Motor Manufacturing Corporation of America
Michelin North America, Inc. - Ardmore, OK			Yankee Freedom II - Dry Tortugas National Park Ferry YSI Incorporated*
Michelin North America, Inc. - US4 Dothan, AL			
Michelin North America, Inc. Greenville Manufacturing Facility, US1			
Michigan Waste Energy, Inc.			
Micron Technology, Inc. - Boise Site			
Micron Technology, Virginia Milgard Pultrusion			
Minot Air Force Base			
Moccasins Point Marina LLC.			
Mohawk Fine Papers Inc. - Beckett Mill			
Monadnock Paper Mills, Inc.			
Monsanto Company - Luling, LA Facility*			
Monsanto Company - Muscatine, Iowa Plant*			
Montenay Energy Resources of Montgomery County, Inc.*			
Mormon Lake Properties LLC / Mormon Lake Lodge			
Motorola ILO2*			
NASA Ames Research Center National Manufacturing Company, a division of Stanley Works			
Naval Air Engineering Station Naval Undersea Warfare Center Division, Newport			
Nellis Air Force Base			
Nestle Confections & Snacks Division			
Nestlé USA - Beverage Division, Jacksonville, IL			