

# **Proposed China Mountain Wind Power Project Environmental Impact Statement**

## **Public Meeting**



---

China Mountain Wind Power  
Project EIS

*Welcome*

**to the**

**Proposed China  
Mountain Wind  
Power Project EIS**

**Public Meeting**



---

China Mountain Wind Power  
Project EIS

*Please*  
Sign-in  
Here!



---

China Mountain Wind Power  
Project EIS

# What is Scoping?

---

The National Environmental Policy Act requires that there shall be an early and open process for determining the scope of issues to be addressed and for identifying the significant issues related to a proposed action. This process is termed Scoping. Scoping is a continual process that ensures the content of the environmental analysis is focused properly. Scoping is an opportunity for tribes and persons who would be affected or interested to provide input and to express their environmental concerns regarding the proposed project.

Overall scoping helps to:

- Identify the relevant issues related to the resources and values in the project area.
- Identify feasible alternatives.



# Public Comment

---

Under the guidelines of the National Environmental Policy Act, the BLM is providing the public the opportunity to comment on this proposed project. This open house meeting is to provide you with the opportunity to visit with BLM resource specialists, ask questions, share information or feedback with them, and provide comment on the proposed project.



---

China Mountain Wind Power  
Project EIS

# Project Applicant

---

**China Mountain Wind LLC**

an affiliate of



**RES Developments Americas, Inc.**

Renewable Energy Systems (RES) Americas is a privately owned company headquartered in Denver, Colorado with their parent company headquartered in the United Kingdom. The company has a long history of developing, constructing and operating wind power projects. RES has constructed 62 operational wind projects with a capacity of more than 2,500 MW around the world and has an additional 1,540 MW under construction. RES currently operates wind farms in Texas and Washington and has additional projects under and/or proposed for development in California, Washington, Colorado, Idaho, Oregon, Texas, Montana, and Minnesota.



China Mountain Wind Power  
Project EIS

# Project Features

---

- Wind turbines with tower heights ranging from 200 to 250 feet
- Up to two substations each covering a two-acre fenced containment area
- Underground electrical cable connecting wind turbines to substations
- Up to 15 miles of new three-phase 138 kV or 345 kV transmission circuits from substations
- Approximately 40 miles of new access roads and 30 miles of improved existing roads
- Temporary concrete batch plant covering up to five acres during project construction
- Project would disturb up to 540 acres on a temporary basis and up to 180 on a permanent basis



# Project Description

---

The Bureau of Land Management (BLM) intends to prepare an Environmental Impact Statement (EIS) for the proposed China Mountain Wind Power Project. China Mountain Wind, LLC (The Applicant) proposes to:

- Develop an approximately 425 megawatt (MW) wind energy facility
- Up to 185 wind turbines with a capacity between 2.3 and 3.0 MW
- On approximately 30,700 acres in the Jarbidge Foothills consisting of:
  - 15,300 acres of the BLM Twin Falls District, Jarbidge Field Office
  - 4,700 acres of public lands administered by BLM Elko District, Wells Field Office
  - 2,000 acres of land managed by the State of Idaho
  - 8,700 acres of private land in Idaho





# Affected Resources

---

The following resources have been identified by the BLM as potentially affected resources.

Additional resources may be identified through the scoping process or during the preparation of the Environmental Impact Statement.

- Visual Resources
- Sage Grouse
- Avian and Bat Species
- Cultural Resources
- Soils and Geology
- Recreation
- Rangeland Resources
- Social and Economic Values



# Proposed Studies

---

To assess potential project impacts to resources within the project area several studies are either underway or are proposed to be completed in the near future. These studies include:

- Avian Use Surveys
- Sage Grouse Lek Surveys
- Bat Species Monitoring
- Big Game Use Surveys
- Cultural and Historical Resource Surveys
- Visual Resource Assessment Including Computer Generated Simulations of the Built Project
- Social and Economic Baseline Studies



# Alternatives

---

Through the scoping process and during preparation of the Environmental Impact Statement the BLM will develop alternatives to the Proposed Action.

The Bureau of Land Management seeks public input for potential project alternatives. The public is encouraged to provide feedback and suggestions regarding the Applicant's proposed alternative and to recommend potential additional alternatives during the scoping period.



# How You Can Be Involved

---

This is your opportunity to provide us with comments, issues or concerns regarding this proposal.

Tonight's public meeting is a vital part of the Public Comment Process of the National Environmental Policy Act.

Comments may be sent to:

Bureau of Land Management  
Attention: Ester McCullough  
Jarbidge Field Office  
2536 Kimberly Road  
Twin Falls, ID 83301  
Telephone (208) 735-2072  
FAX (208) 736-2375

E-mail comments to:

*[id\\_chinamtn\\_eis@blm.gov](mailto:id_chinamtn_eis@blm.gov)*

**For more information on the proposed China Mountain Wind Power Project, please visit the project web site at**

**[http://www.blm.gov/id/st/en/prog/planning/china\\_mountain\\_wind.html](http://www.blm.gov/id/st/en/prog/planning/china_mountain_wind.html)**



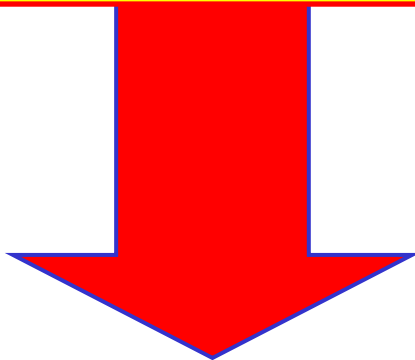
China Mountain Wind Power  
Project EIS

# We Want Your Comments

Your comments are important to us. Please take the time to fill out one of the comment forms. You may leave it with us or mail it to the address printed on the form. For comments to be most helpful in the preparation of the Draft Environmental Impact Statement please submit comments by July 21, 2008.

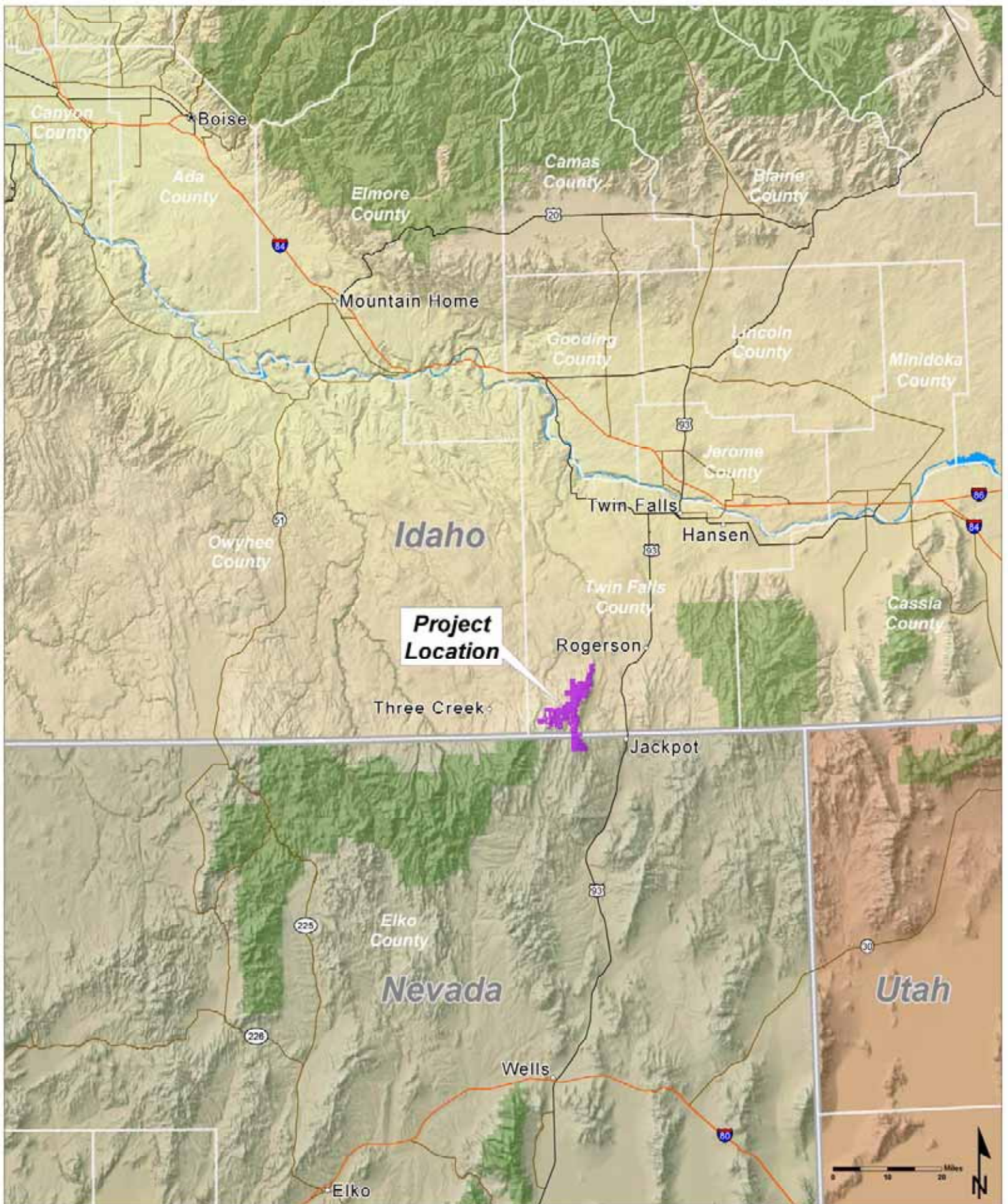
*Thank you for your participation*

Comment Forms Available Here

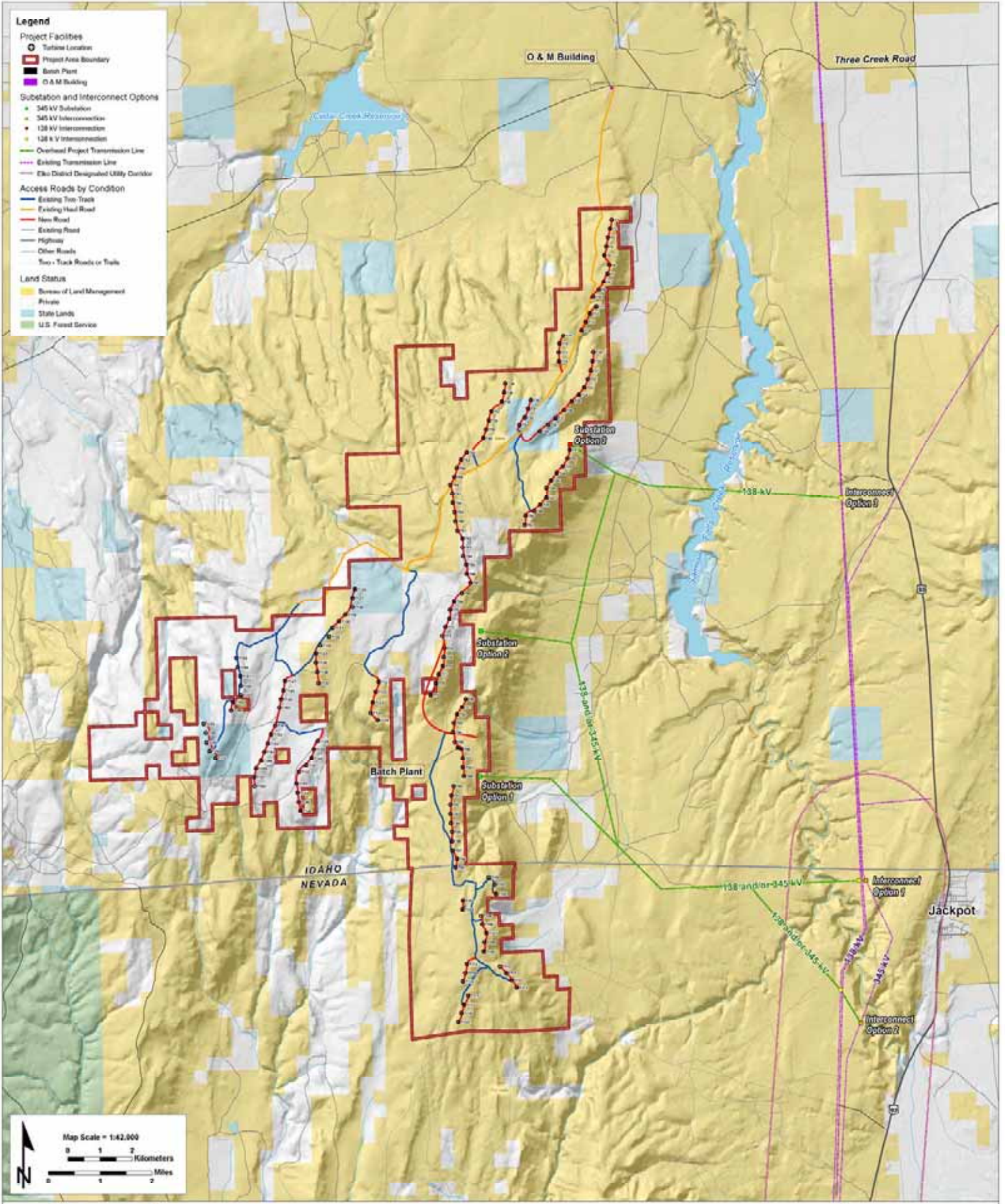


---

China Mountain Wind Power  
Project EIS



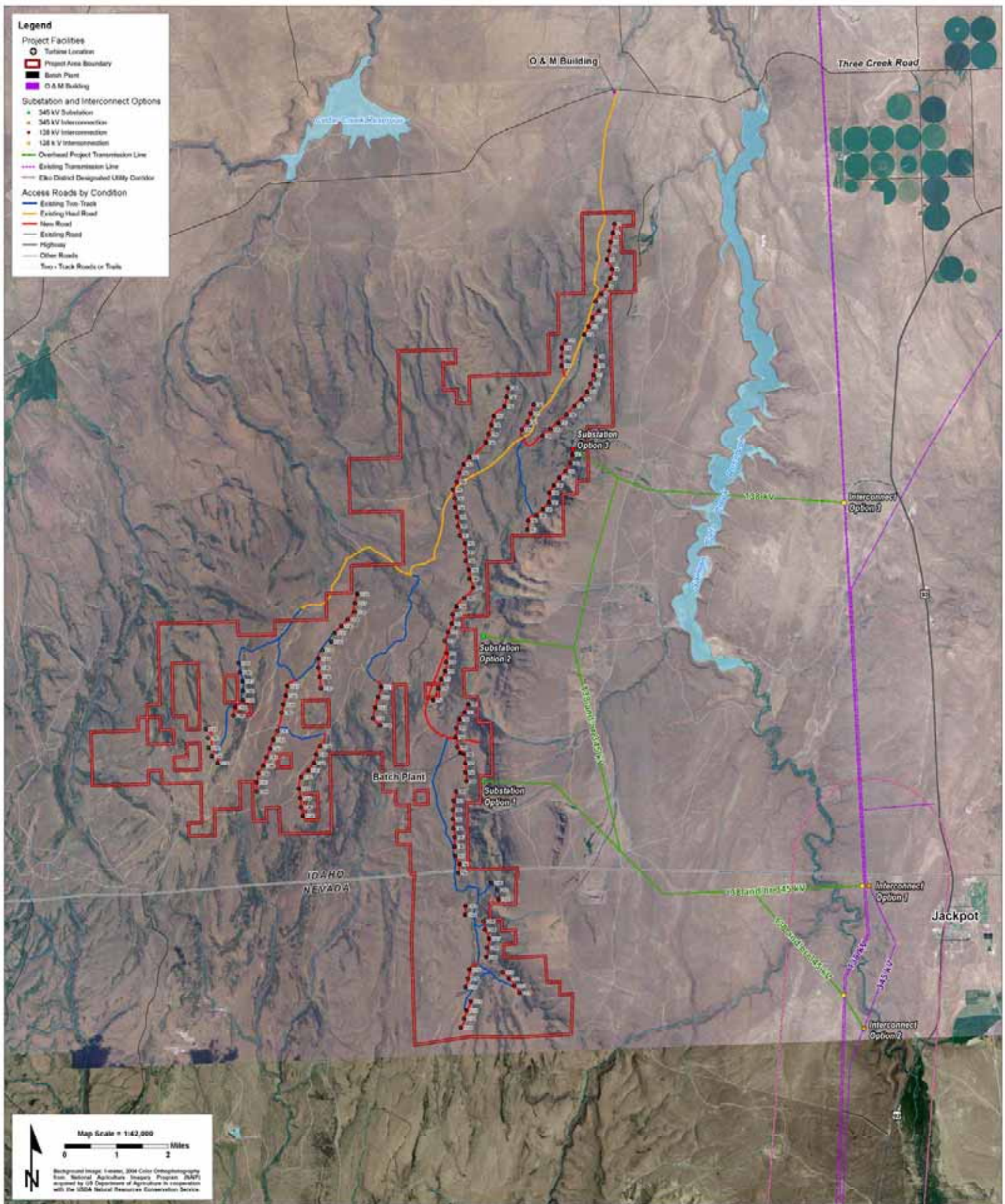
China Mountain Wind Power Project  
Environmental Impact Statement  
**Project Vicinity Map**



China Mountain Wind Power Project  
 Environmental Impact Statement  
**Proposed Site Plan - 2008**



- Legend**
- Project Facilities**
    - Turbine Location
    - Project Area Boundary
    - Barren Plant
    - O & M Building
  - Substation and Interconnect Options**
    - 345 kV Substation
    - 345 kV Interconnection
    - 138 kV Interconnection
    - 138 kV Interconnection
    - Overhead Project Transmission Line
    - Existing Transmission Line
    - Elko District Designated Utility Corridor
  - Access Roads by Condition**
    - Existing Tim-Track
    - Existing Haul Road
    - New Road
    - Existing Road
    - Highway
    - Other Roads
    - Tim-Track Roads or Trails

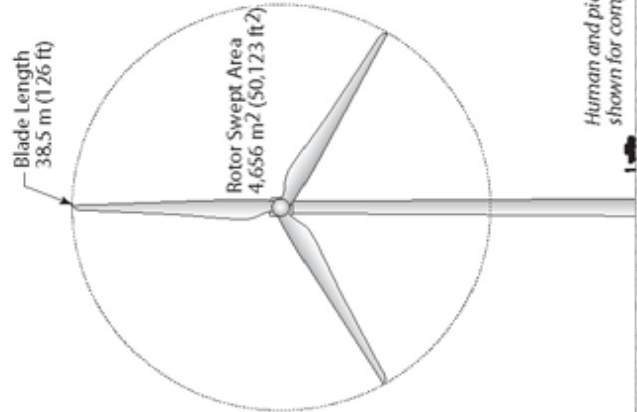
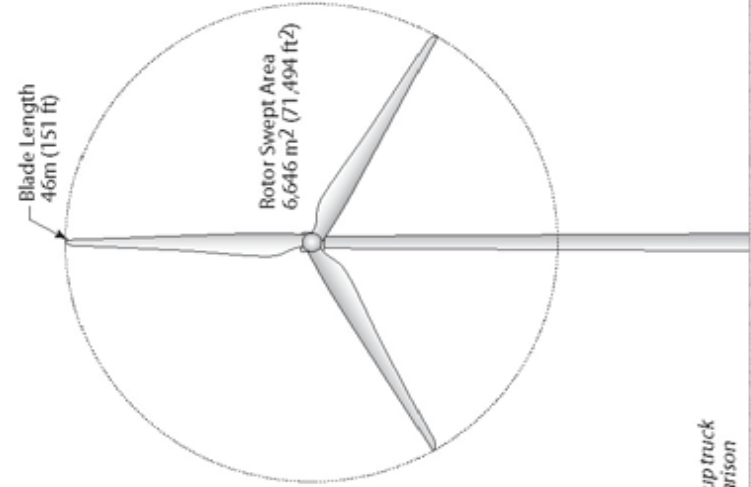
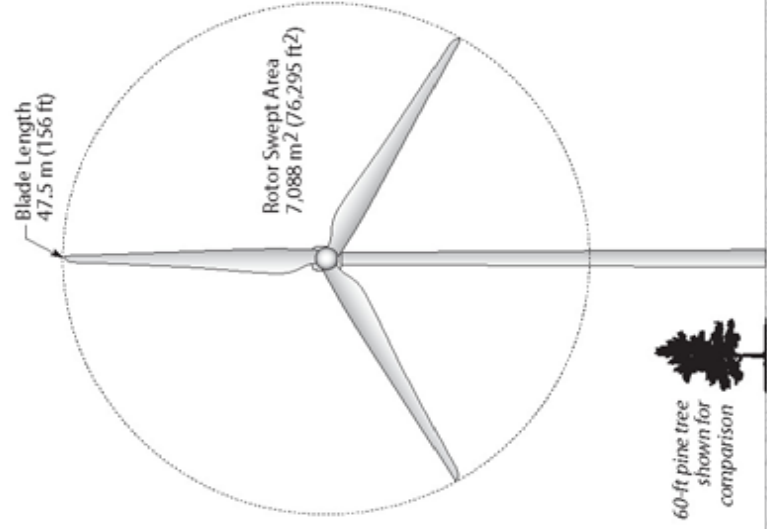
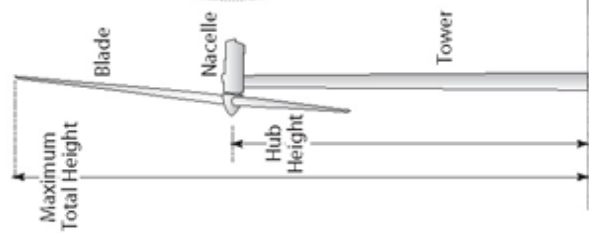
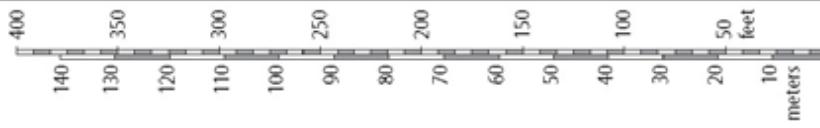


**China Mountain Wind Power Project  
Environmental Impact Statement  
Proposed Site Plan - 2008**





China Mountain Wind Power  
Project EIS  
Photos of Typical Wind Energy Projects



Generic Turbine Profile	1.5 MW Turbine	2.3 MW Turbine	2.4 MW Turbine
Hub height:	65 m (213 ft)	80 m (262.5 ft)	80 m (262.5 ft)
Max height:	103 m (338 ft)	126 m (413 ft)	127.5 m (418 ft)



China Mountain Wind Power  
Project EIS  
Wind Turbine Profiles

# Project Schedule

---

The Draft EIS, which is scheduled for completion in early 2010, will be provided to the public for review and comment. Comments on the Draft EIS received from agencies and the public will be considered and incorporated into the Final EIS. The Final EIS is expected to be published in late 2010.

