

ENHANCING OUR COMMUNITY



**Pacific Gas and
Electric Company™**



Project:
Jefferson-Martin 230-kv
Transmission Line

Contractor:
Black & Veatch Construction, Inc.
**San Andreas & Sawyer Camp Trails
Subject to Closure from
Sept. 26, 2005 Thru March 2006
Closed Trail Area Marked in Red**



More Information:
1-800-234-2117
www.jeffersonmartin.com
info@jeffersonmartin.com



New Tower

Old Tower



Old Tower

New Tower

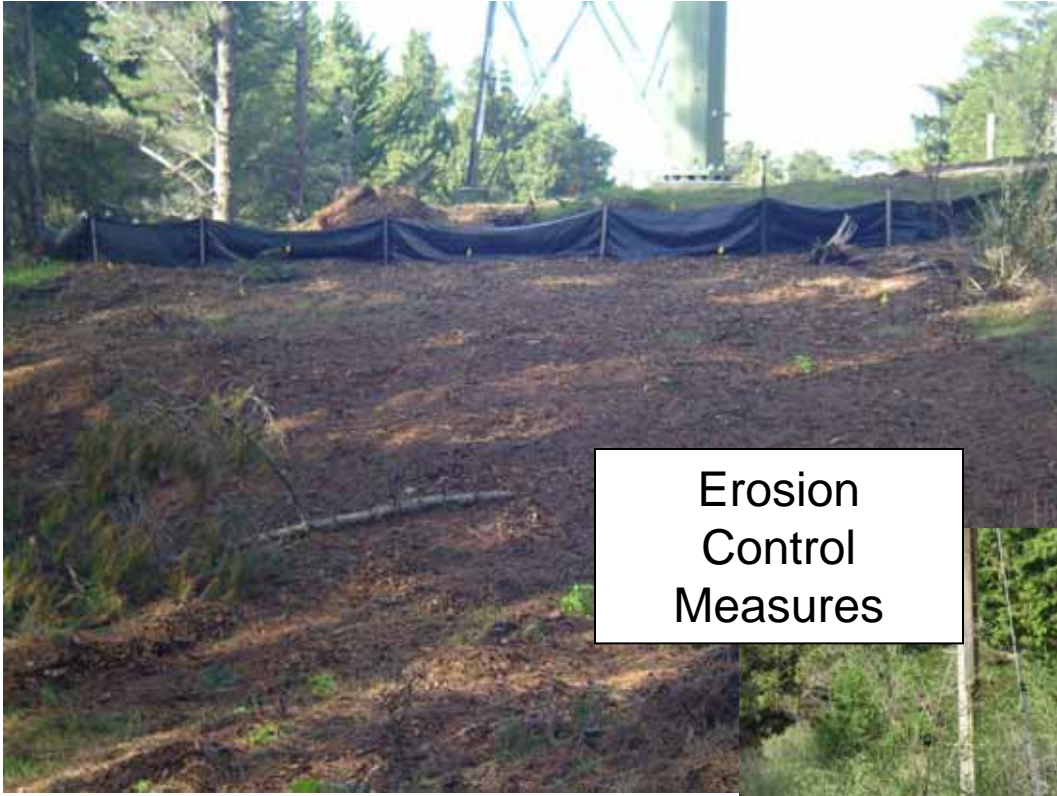


Old Tower
Footprint



New Tower
Footprint





Erosion
Control
Measures





Tree removal



Mitigation Measures for San Francisco red-legged snakes



Tower Construction site



Large Trees needed to be removed for tower. Restoration plan is in progress.

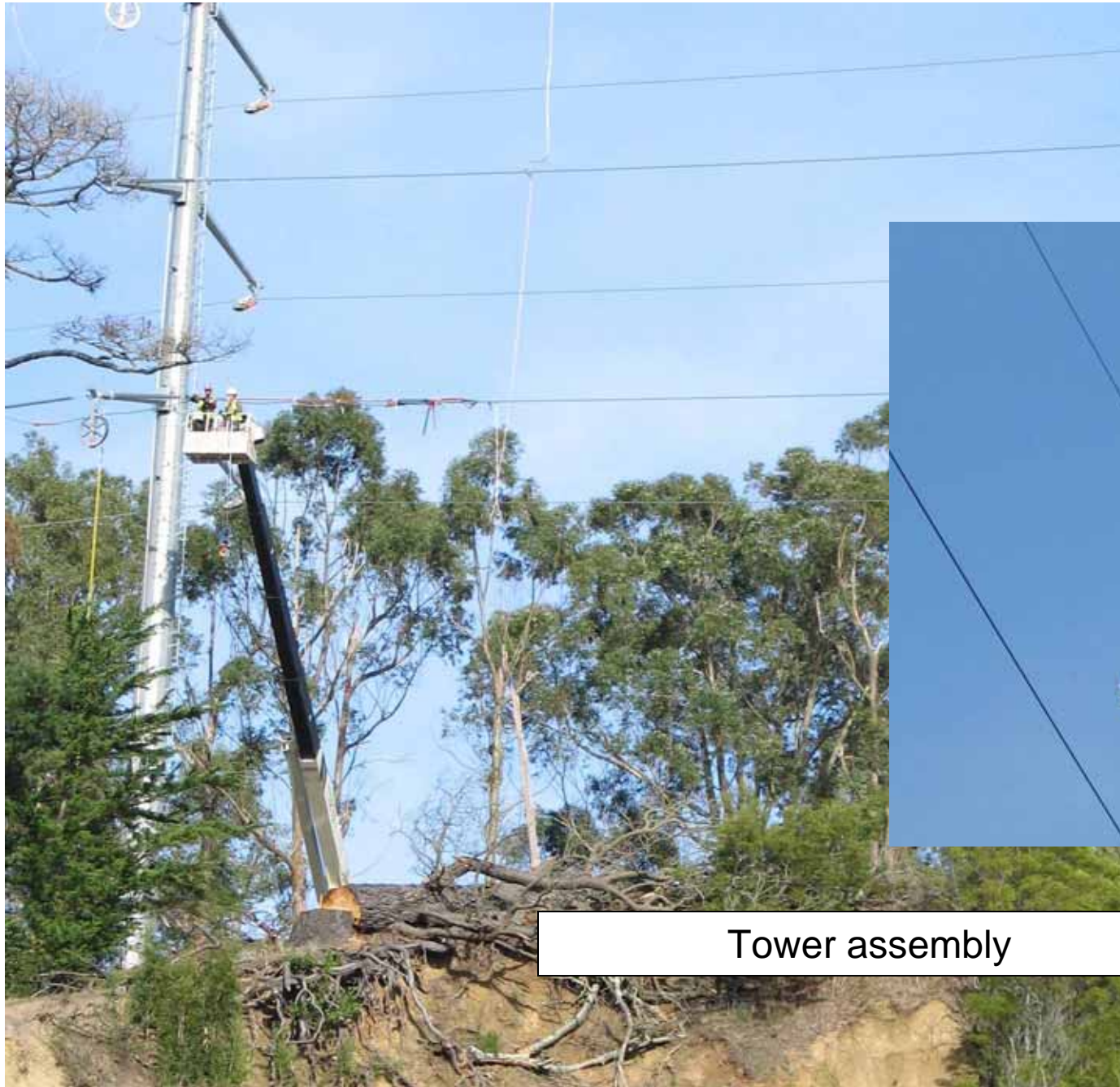




Woodrat nest on site,
undisturbed



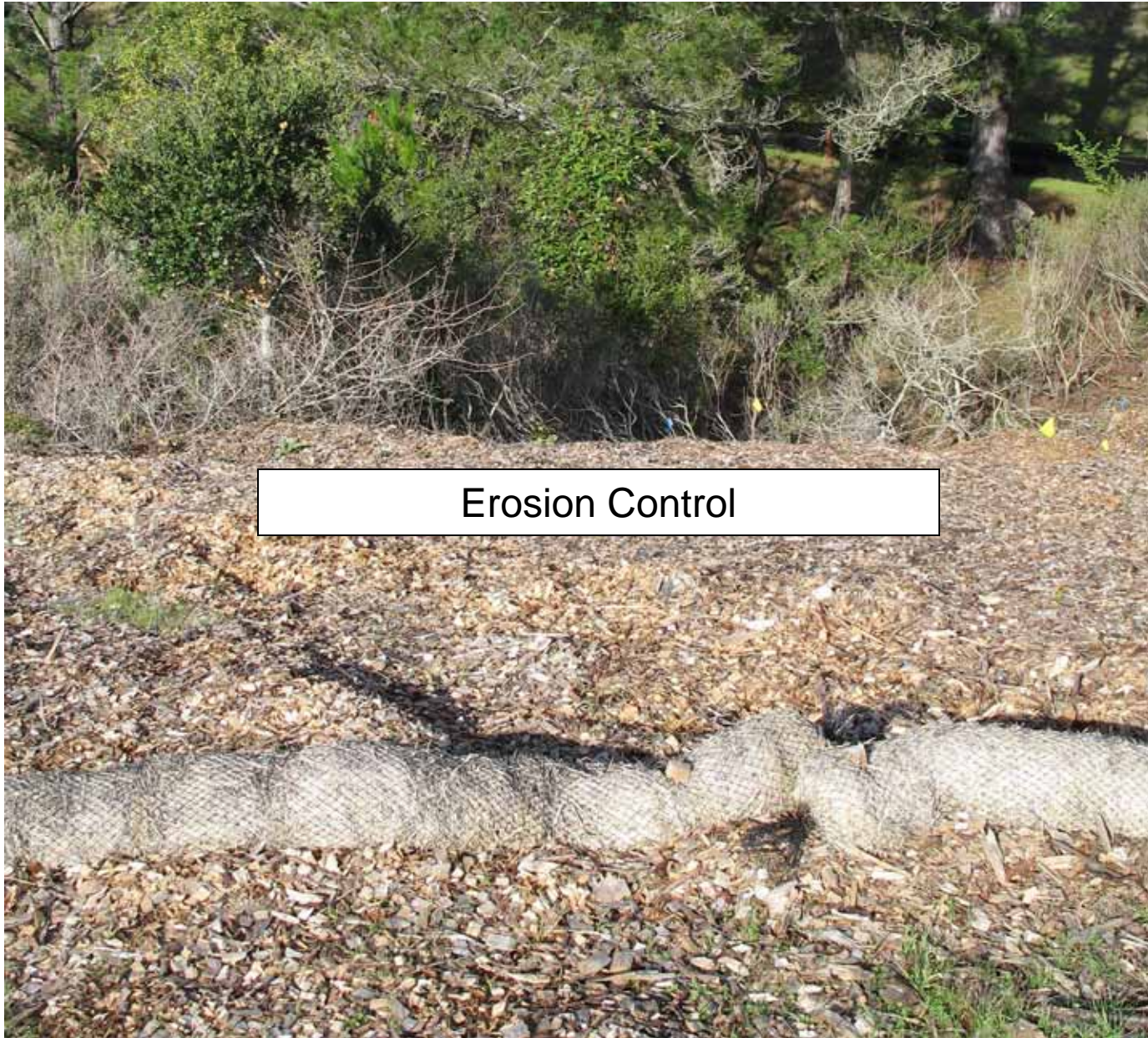
Snake fencing around staging area,
they can get out, but not in



Tower assembly







Erosion Control



Snake fencing around wetland



Tree replanting – oaks from native acorns



More snake fencing – mitigation measure











Some wildlife on project site

