



Bobcat

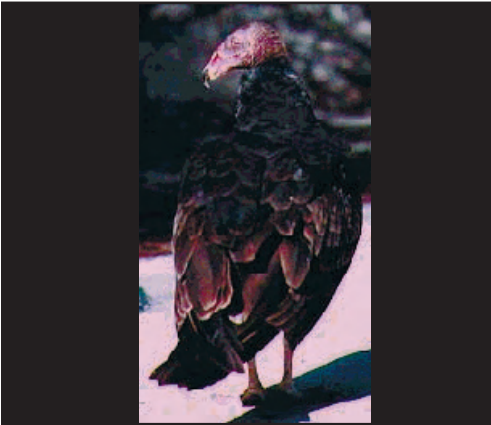
Felis rufus

Loves open areas, but can be seen in deep forest or alongside streams. Sleeps in a den of dry leaves, in a hollow log, or under a rock ledge or fallen tree.

Appearance gray-brown to reddish color, bobbed tail

When active night and daytime

What it eats rabbits, mice, squirrels, woodrats, small weak deer



Turkey Vulture

Cathartes aura

Loves flying high in dry open areas and along roadsides

Appearance brown-black color with unfeathered red head and yellow feet

What it eats dead animals and rotting meat



Northern Spotted Owl

Strix occidentalis

Loves thickly wooded canyons, old growth redwood forests

Appearance large dark eyes and white spotting on head, back, and underparts

When active nighttime

What it eats woodrats, rabbits, deer mice, red tree voles, pocket gophers

Note Endangered species



Gray Fox

Urocyon cinereoargenteus

Loves hunting for prey in the forest, open areas, or along creeks and rivers

Appearance predominantly gray fur with patches of red

When active night

What it eats rabbits, voles, field mice, shrews, squirrels, birds, fruit, vegetation

Note one of the few canines who can climb trees



Pacific Giant Salamander

Dicamptodon ensatus

Loves stream areas inside damp forests

Appearance brown on black, gray, or purple, with white speckled sides; around 30 cm in length

When active feeds mainly at night

What it eats snakes, small rodents, insects, crustaceans, mollusks, banana slugs



Coho Salmon

Oncorhynchus kisutch

Loves streams and oceans

Appearance silver with black spots

What it eats aquatic micro-organisms, insect larvae, decaying animals and insects

Note born in a river, then travel to the ocean where they live their adult lives. However, they come back to the river they were born in to lay their eggs and die. Endangered species.



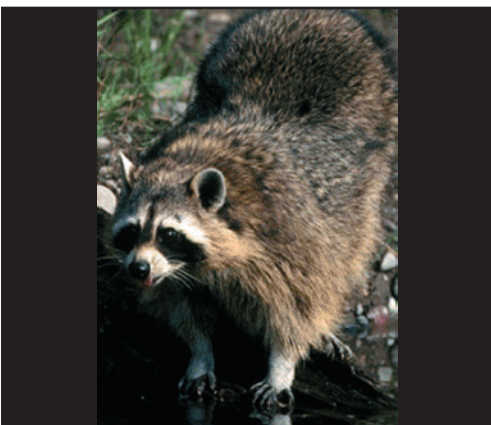
Water Strider

Geris remigis

Loves skimming along the surface of slow moving ponds and streams

Appearance long and slender black body

What it eats small insects



Raccoon

Procyon lotor

Loves to feed alongside streams, but will wander from water.

Sleeps in hollow logs, trees, or ground burrows

Appearance salt and pepper coloring, masked face

When active mainly at night

What it eats fruits, nuts, grains, insects, frogs, fish, crayfish, bird's eggs



Convergent Lady Bug

Hippodamia convergens

Loves dense forests, fields, and open grasslands

Appearance orange and black

What it eats..... aphids and pollen (in the inland valley before migration)

Note born in the inland valleys where they feast on aphids and pollen. In the summer they migrate to the coast to clump together for protection and to mate. In the late winter they return to the inland valleys to lay eggs and die.



Western Gray Squirrel

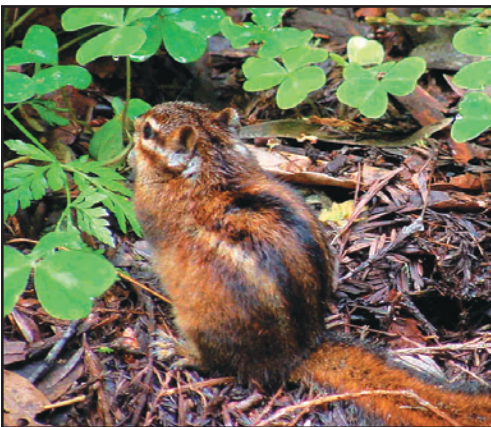
Sciurus griseus

Loves to feed in the dense forest or open areas; sleeps in nests of sticks, leaves and shredded bark in tree cavities or on branches

Appearance large and gray with a bushy tail

When active mornings

What it eats..... mushrooms, acorns, fir seeds



Sonoma Chipmunk

Eutamias sonoma

Loves to feed in dense forest; sleeps in burrows or nests in tree cavities

Appearance reddish-brown colored with stripes down back and tail

When active during the day

What it eats..... seeds, nuts, buds, fruit, insects



Dusky-Footed Woodrat

Neotoma fuscipes

Loves shady forest close to streams and water

Appearance gray colored with tints of bluff and pink

When active nighttime

What it eats..... green plants, nuts, seeds, fruit, mushrooms



Banana Slug

Ariolimax columbianus

Loves wet and very shady areas

Appearance smooth and yellow, sometimes spotted

When active night

What it eats living and decaying leaves, roots, mushrooms, fruit, seeds, bulbs, lichen, algae, animal droppings, dead animals



Steller's Jay

Cyanocitta stelleri

Loves dense forest, but can be seen scavenging in open areas; makes nests of twigs and mud in coniferous trees

Appearance bright blue with a black crest, throat and upper breast

What it eats berries, nuts, acorns, wild bees, wasps, eggs, nestlings of small birds



Black-Tailed Deer

Odocoileus hemionus columbianus

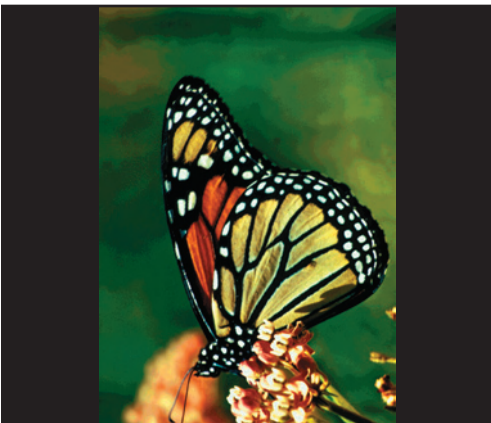
Loves open areas, but can be seen in deep forest or alongside streams

Appearance brown or gray with a white tail that has a black stripe

When active mainly at dawn and dusk

What it eats redwood sorrel, acorns, shrubs

Note Buck sheds antlers in winter



Monarch Butterfly

Danaus plexippus

Loves open meadows, but will winter under dense tree cover

Appearance large with orange and black wings

What it eats the larvae feed on milkweeds, the adults forage for flower nectar

Note migrates between Mexico and California