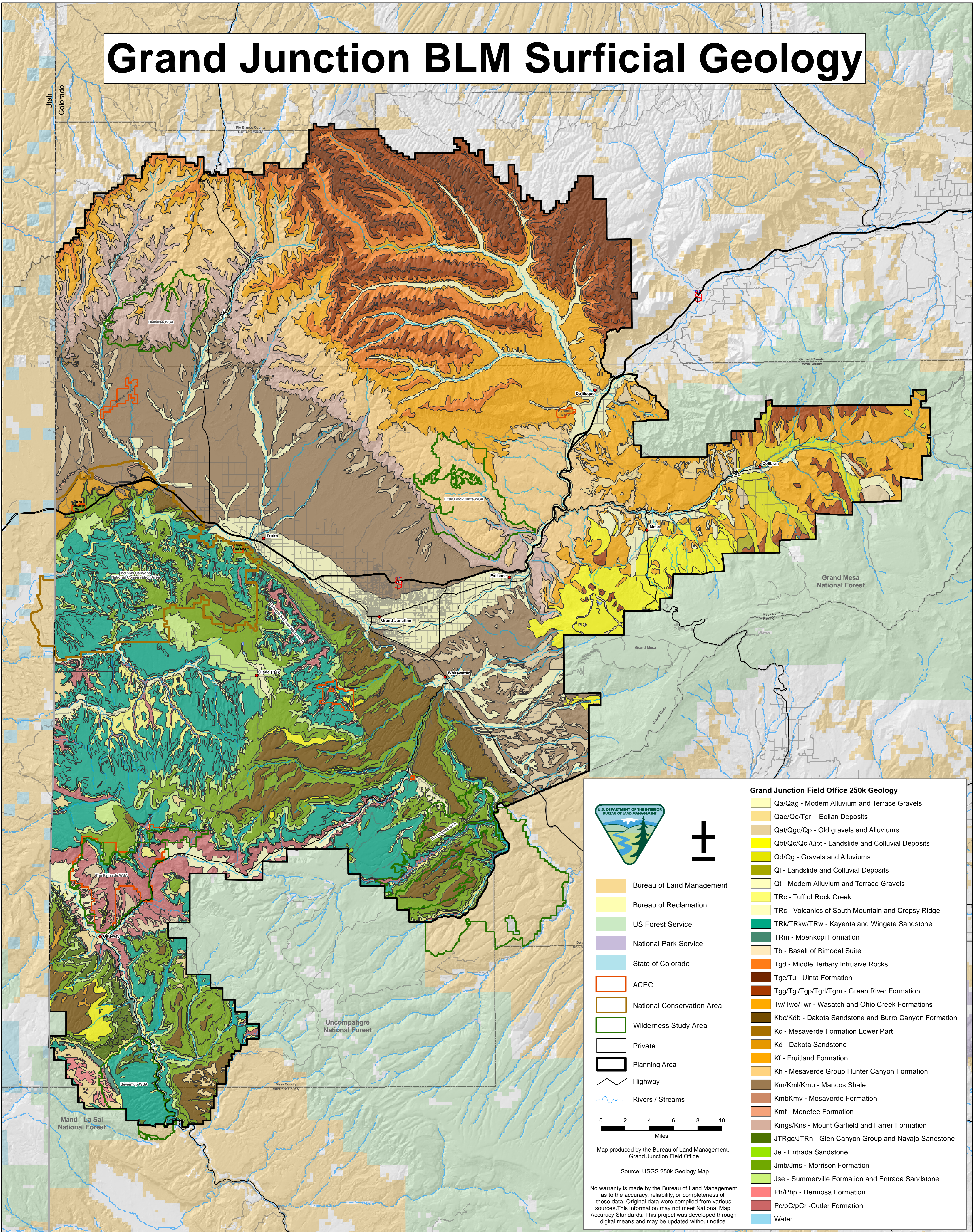



Grand Junction BLM Surficial Geology





U.S. DEPARTMENT OF THE INTERIOR
BUREAU OF LAND MANAGEMENT

Grand Junction Field Office 250k Geology

	Bureau of Land Management		Qa/Qag - Modern Alluvium and Terrace Gravels
	Bureau of Reclamation		Qae/Qe/Tgrl - Eolian Deposits
	US Forest Service		Qat/Qo/Qp - Old gravels and Alluviums
	National Park Service		Qbt/Qc/Qcl/Qpt - Landslide and Colluvial Deposits
	State of Colorado		Qd/Qg - Gravels and Alluviums
	ACEC		Ql - Landslide and Colluvial Deposits
	National Conservation Area		Qt - Modern Alluvium and Terrace Gravels
	Wilderness Study Area		TRc - Tuff of Rock Creek
	Private		TRc - Volcanics of South Mountain and Cropsy Ridge
	Planning Area		TRk/TRkw/TRw - Kayenta and Wingate Sandstone
	Highway		TRm - Moenkopi Formation
	Rivers / Streams		Tb - Basalt of Bimodal Suite

0 2 4 6 8 10
Miles

Map produced by the Bureau of Land Management, Grand Junction Field Office

Source: USGS 250k Geology Map

No warranty is made by the Bureau of Land Management as to the accuracy, reliability, or completeness of these data. Original data were compiled from various sources. This information may not meet National Map Accuracy Standards. This project was developed through digital means and may be updated without notice.

- Qa/Qag - Modern Alluvium and Terrace Gravels
- Qae/Qe/Tgrl - Eolian Deposits
- Qat/Qo/Qp - Old gravels and Alluviums
- Qbt/Qc/Qcl/Qpt - Landslide and Colluvial Deposits
- Qd/Qg - Gravels and Alluviums
- Ql - Landslide and Colluvial Deposits
- Qt - Modern Alluvium and Terrace Gravels
- TRc - Tuff of Rock Creek
- TRc - Volcanics of South Mountain and Cropsy Ridge
- TRk/TRkw/TRw - Kayenta and Wingate Sandstone
- TRm - Moenkopi Formation
- Tb - Basalt of Bimodal Suite
- Tgd - Middle Tertiary Intrusive Rocks
- Tge/Tu - Uinta Formation
- Tgg/Tgl/Tgp/Tgrl/Tgru - Green River Formation
- Tw/Two/Twr - Wasatch and Ohio Creek Formations
- Kbc/Kdb - Dakota Sandstone and Burro Canyon Formation
- Kc - Mesaverde Formation Lower Part
- Kd - Dakota Sandstone
- Kf - Fruitland Formation
- Kh - Mesaverde Group Hunter Canyon Formation
- Km/Kml/Kmu - Mancos Shale
- Kmb/Kmv - Mesaverde Formation
- Kmf - Menefee Formation
- Kmgs/Kns - Mount Garfield and Farrer Formation
- JTRgc/JTRn - Glen Canyon Group and Navajo Sandstone
- Je - Entrada Sandstone
- Jmb/Jms - Morrison Formation
- Jse - Summerville Formation and Entrada Sandstone
- Ph/Php - Hermosa Formation
- Pc/pC/pCr - Cutler Formation
- Water