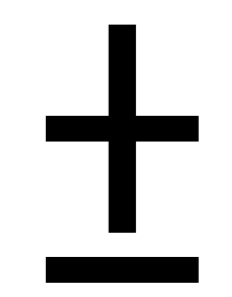
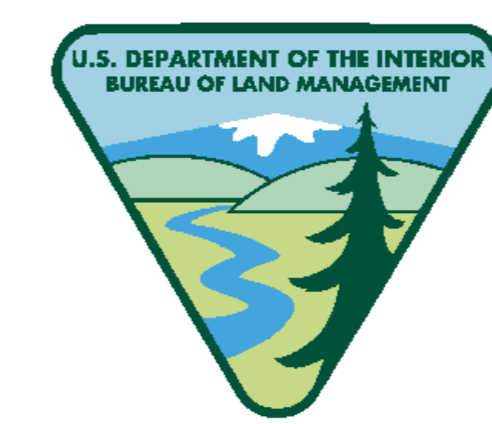
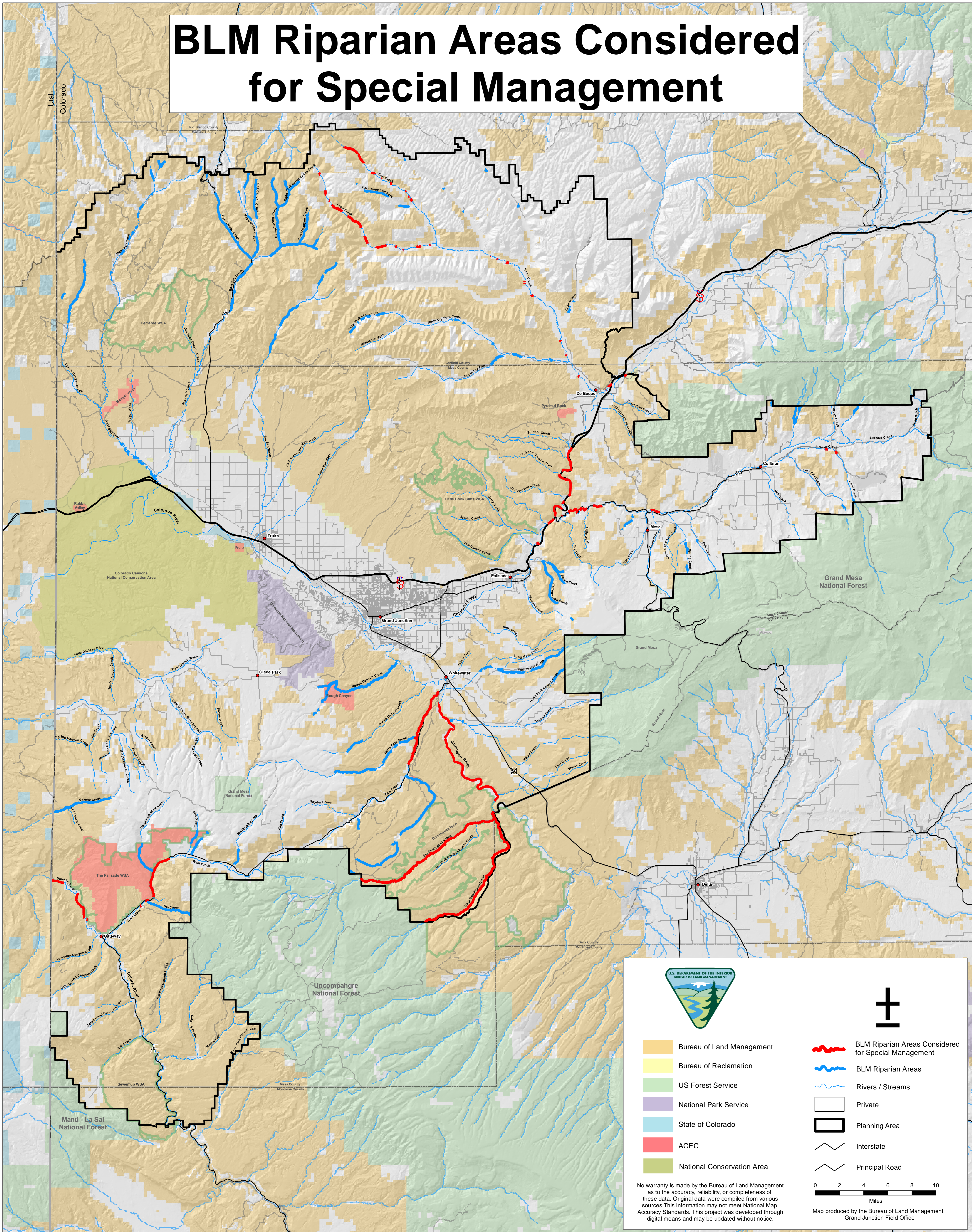


BLM Riparian Areas Considered for Special Management



- Bureau of Land Management
- Bureau of Reclamation
- US Forest Service
- National Park Service
- State of Colorado
- ACEC
- National Conservation Area
- BLM Riparian Areas Considered for Special Management
- BLM Riparian Areas
- Rivers / Streams
- Private
- Planning Area
- Interstate
- Principal Road

No warranty is made by the Bureau of Land Management as to the accuracy, reliability, or completeness of these data. Original data were compiled from various sources. This information may not meet National Map Accuracy Standards. This project was developed through digital means and may be updated without notice.

0 2 4 6 8 10
Miles

Map produced by the Bureau of Land Management, Grand Junction Field Office