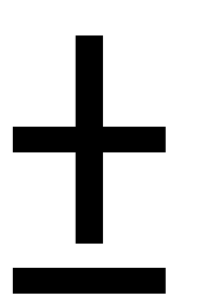
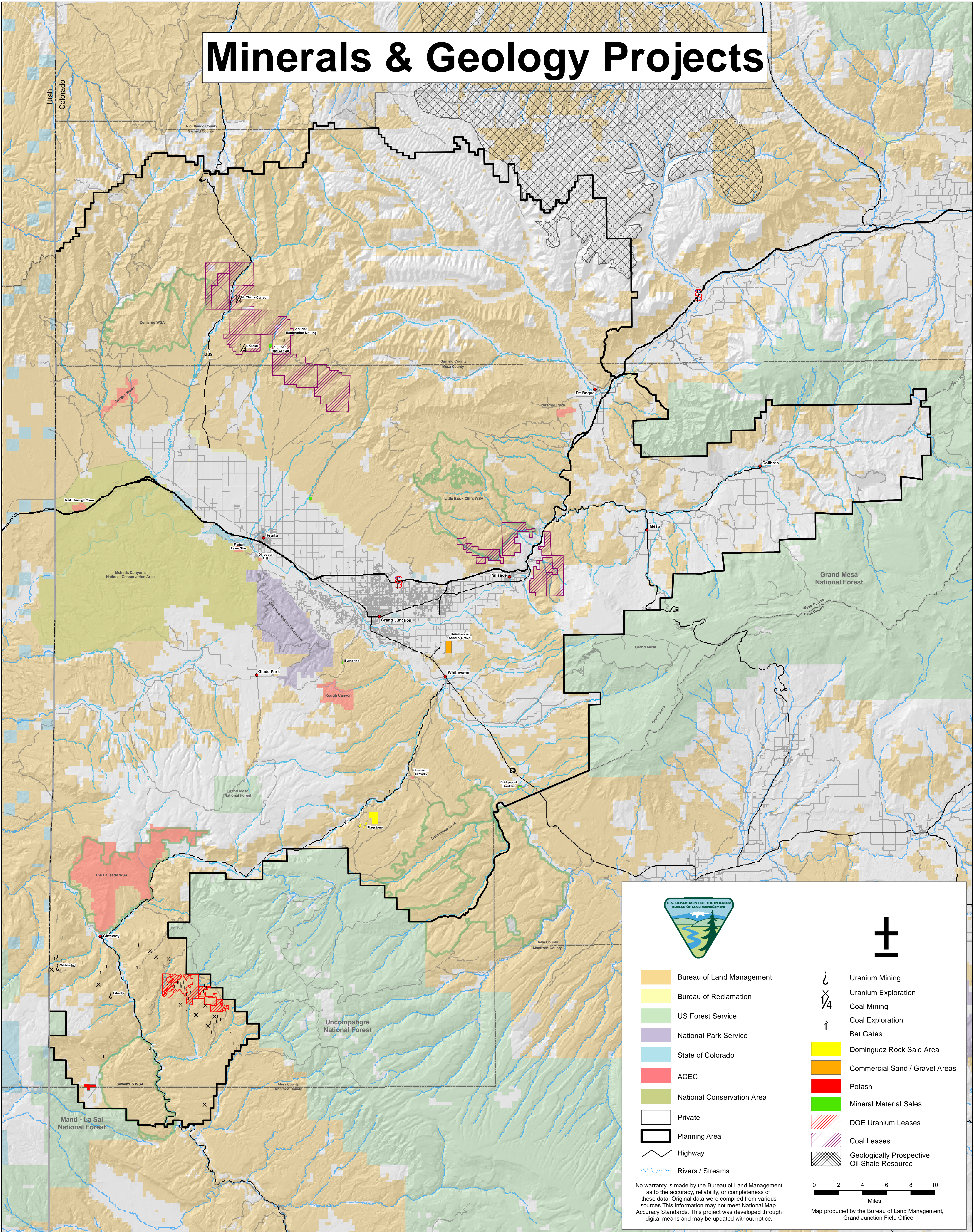


Minerals & Geology Projects



- | | | | |
|--|----------------------------|--|---|
| | Bureau of Land Management | | Uranium Mining |
| | Bureau of Reclamation | | Uranium Exploration |
| | US Forest Service | | Coal Mining |
| | National Park Service | | Coal Exploration |
| | State of Colorado | | Bat Gates |
| | ACEC | | Dominguez Rock Sale Area |
| | National Conservation Area | | Commercial Sand / Gravel Areas |
| | Private | | Potash |
| | Planning Area | | Mineral Material Sales |
| | Highway | | DOE Uranium Leases |
| | Rivers / Streams | | Coal Leases |
| | | | Geologically Prospective Oil Shale Resource |

No warranty is made by the Bureau of Land Management as to the accuracy, reliability, or completeness of these data. Original data were compiled from various sources. This information may not meet National Map Accuracy Standards. This project was developed through digital means and may be updated without notice.



Map produced by the Bureau of Land Management, Grand Junction Field Office