

CULTURAL RESOURCES: Heritage Values of Archaeology, History and Native American Traditional Use

The non-material side of cultural resources Native American Traditional Uses

- Historic and Current Traditional Uses
- Sacred Sites
- Religious Freedom
- Maintaining Cultural Practices
- Acquiring plant resources
- Ties to Traditional Lands

Cultural Resource Management / Grand Junction Field Office

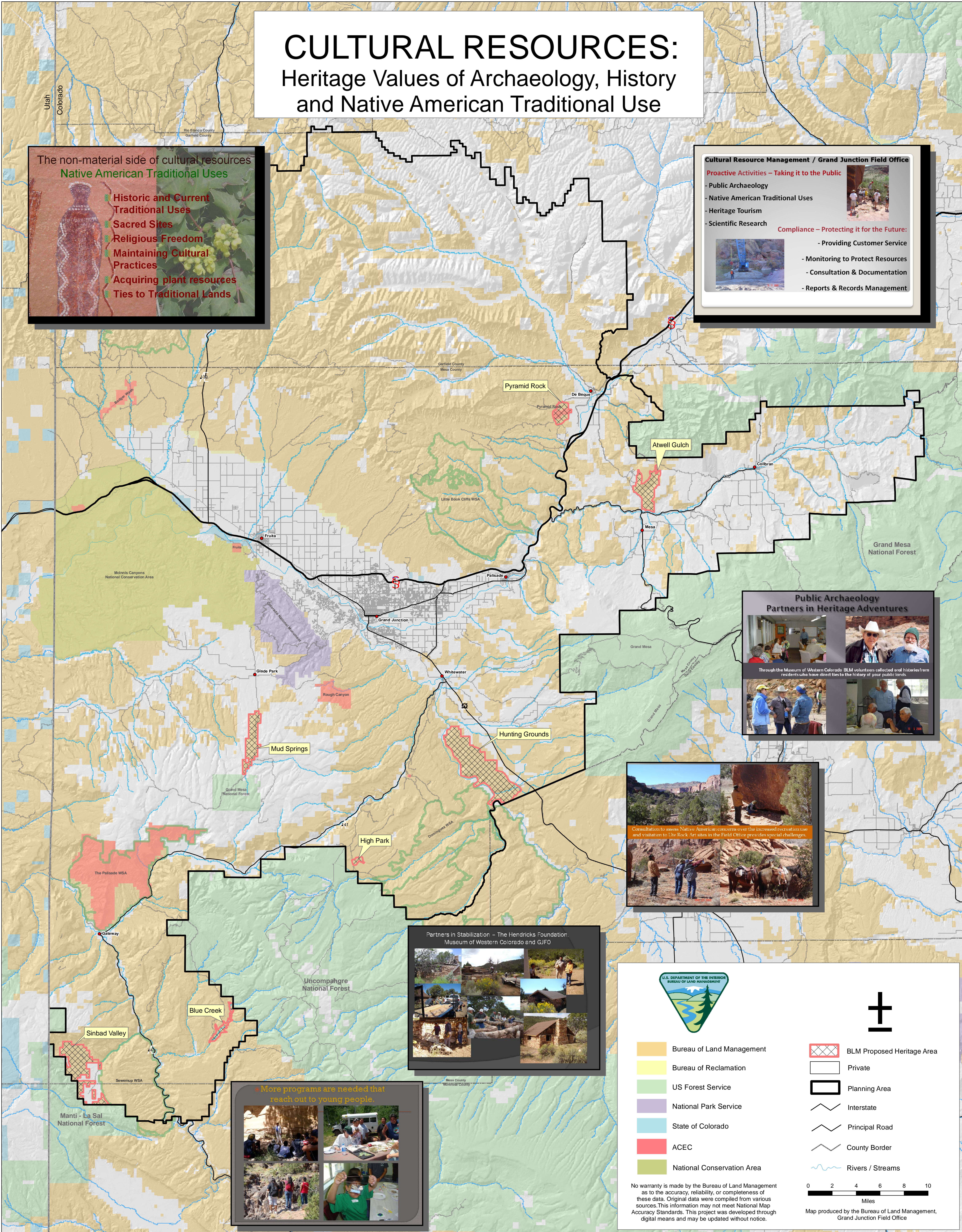
Proactive Activities – Taking it to the Public

- Public Archaeology
- Native American Traditional Uses
- Heritage Tourism
- Scientific Research



Compliance – Protecting it for the Future:

- Providing Customer Service
- Monitoring to Protect Resources
- Consultation & Documentation
- Reports & Records Management



Public Archaeology Partners in Heritage Adventures

Through the Museum of Western Colorado BLM volunteers collected oral histories from residents who have direct ties to the history of your public lands.

Consultation to assess Native American concerns over the increased recreation use and visitation to the Rock Art sites in the Field Office provides special challenges.

Partners in Stabilization – The Hendricks Foundation, Museum of Western Colorado and GJFO

More programs are needed that reach out to young people.

- Bureau of Land Management
- Bureau of Reclamation
- US Forest Service
- National Park Service
- State of Colorado
- ACEC
- National Conservation Area

- BLM Proposed Heritage Area
- Private
- Planning Area
- Interstate
- Principal Road
- County Border
- Rivers / Streams

0 2 4 6 8 10
Miles

Map produced by the Bureau of Land Management,
Grand Junction Field Office

No warranty is made by the Bureau of Land Management as to the accuracy, reliability, or completeness of these data. Original data were compiled from various sources. This information may not meet National Map Accuracy Standards. This project was developed through digital means and may be updated without notice.