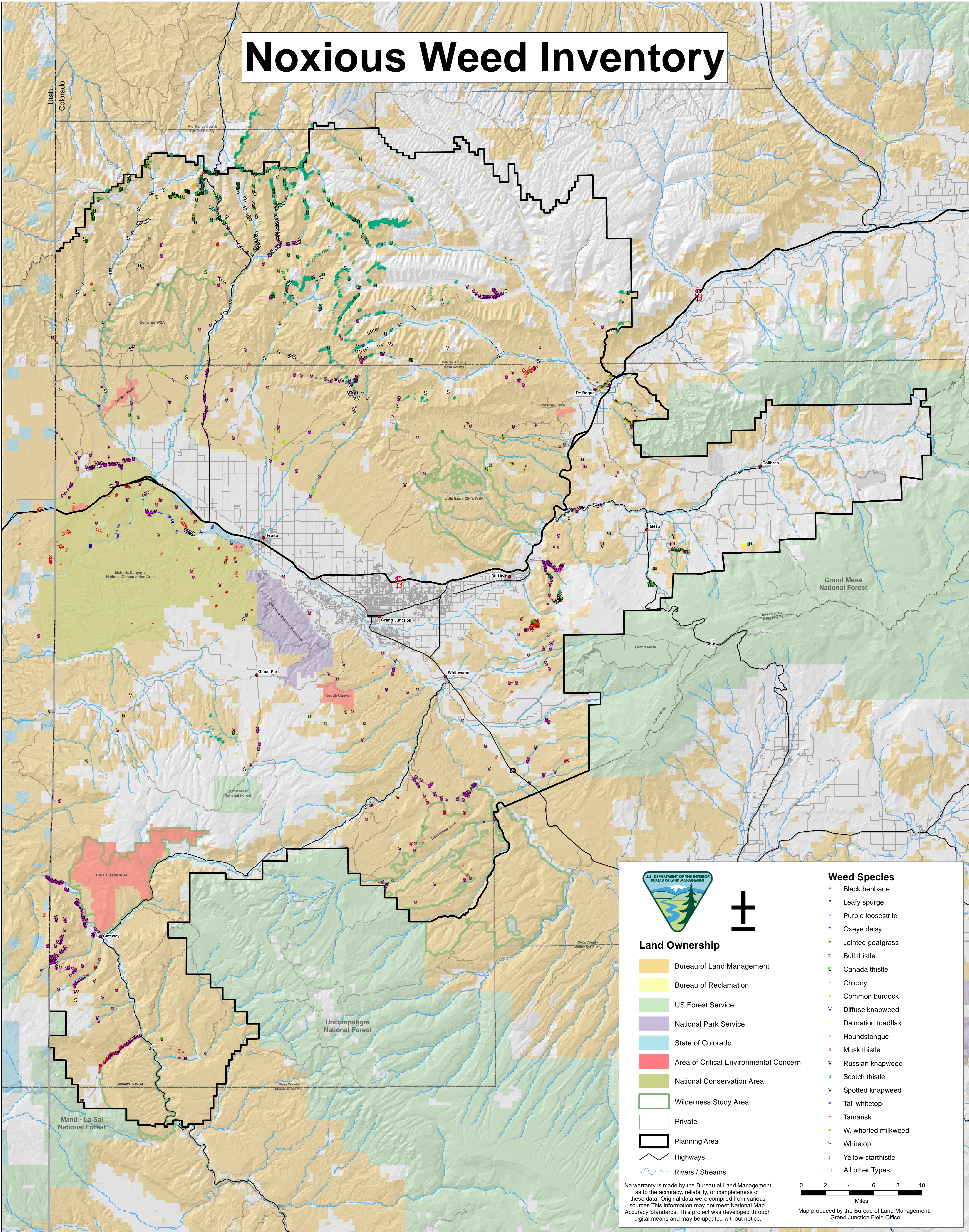



Noxious Weed Inventory



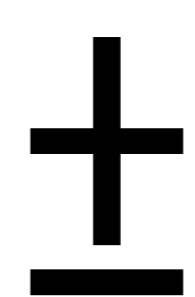


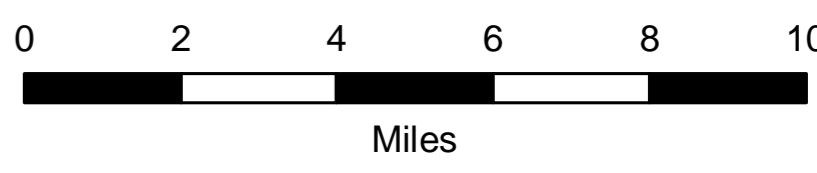
Land Ownership

- Bureau of Land Management
- Bureau of Reclamation
- US Forest Service
- National Park Service
- State of Colorado
- Area of Critical Environmental Concern
- National Conservation Area
- Wilderness Study Area
- Private
- Planning Area
- Highways
- Rivers / Streams

Weed Species

- # Black henbane
- Leafy spurge
- Purple loosestrife
- Oxeye daisy
- Jointed goatgrass
- u Bull thistle
- u Canada thistle
- Chicory
- Common burdock
- v Diffuse knapweed
- Dalmation toadflax
- Houndstongue
- u Musk thistle
- v Russian knapweed
- u Scotch thistle
- v Spotted knapweed
- # Tall whitetop
- Tamarisk
- W. whorled milkweed
- s Whitetop
-) Yellow starthistle
- G All other Types





0 2 4 6 8 10
Miles

No warranty is made by the Bureau of Land Management as to the accuracy, reliability, or completeness of these data. Original data were compiled from various sources. This information may not meet National Map Accuracy Standards. This project was developed through digital means and may be updated without notice.

Map produced by the Bureau of Land Management, Grand Junction Field Office