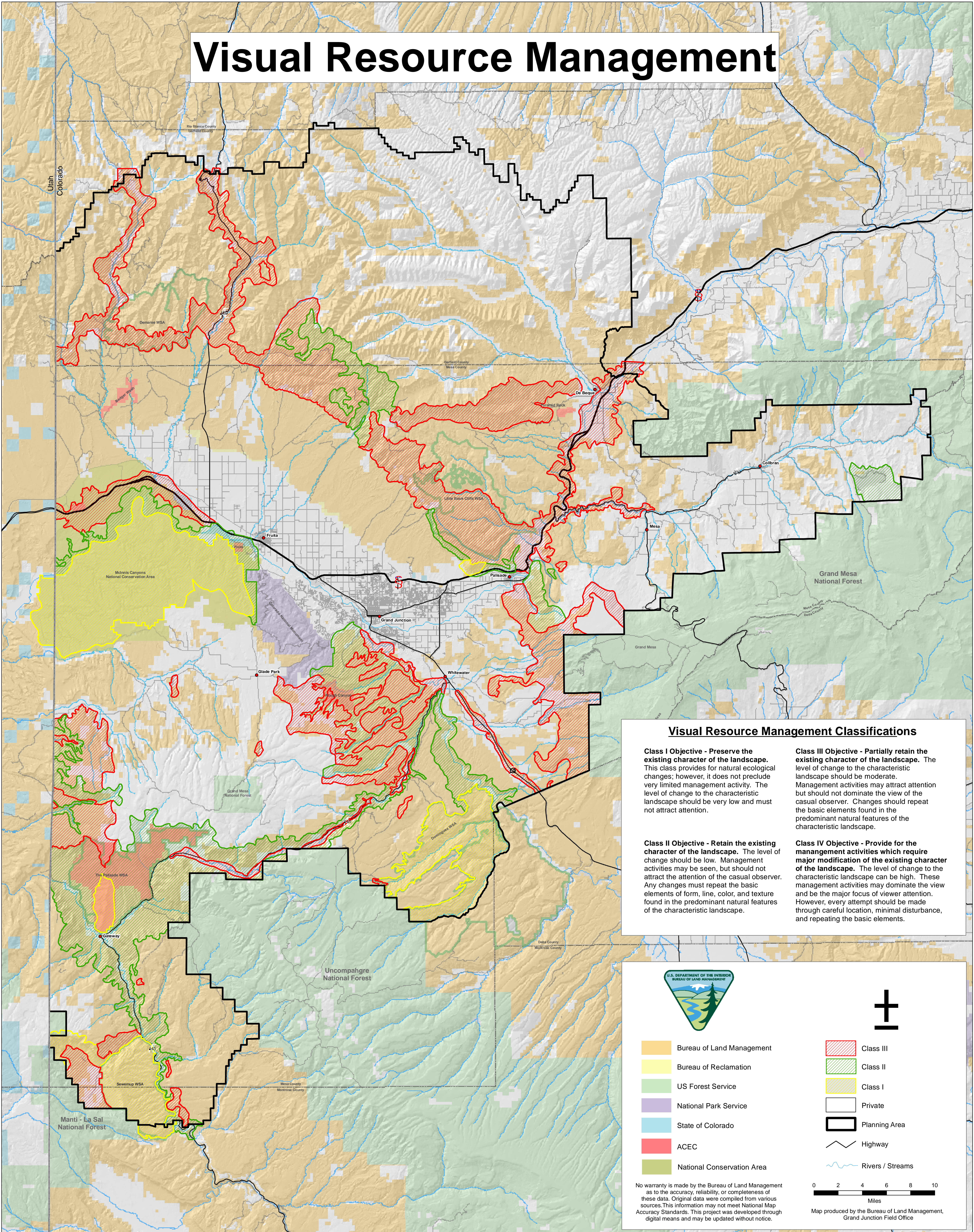


# Visual Resource Management



## Visual Resource Management Classifications

**Class I Objective - Preserve the existing character of the landscape.** This class provides for natural ecological changes; however, it does not preclude very limited management activity. The level of change to the characteristic landscape should be very low and must not attract attention.

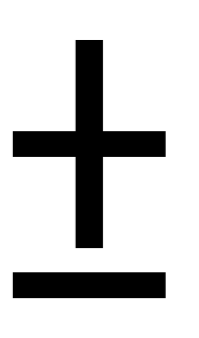
**Class II Objective - Retain the existing character of the landscape.** The level of change should be low. Management activities may be seen, but should not attract the attention of the casual observer. Any changes must repeat the basic elements of form, line, color, and texture found in the predominant natural features of the characteristic landscape.

**Class III Objective - Partially retain the existing character of the landscape.** The level of change to the characteristic landscape should be moderate. Management activities may attract attention but should not dominate the view of the casual observer. Changes should repeat the basic elements found in the predominant natural features of the characteristic landscape.

**Class IV Objective - Provide for the management activities which require major modification of the existing character of the landscape.** The level of change to the characteristic landscape can be high. These management activities may dominate the view and be the major focus of viewer attention. However, every attempt should be made through careful location, minimal disturbance, and repeating the basic elements.



- Bureau of Land Management
- Bureau of Reclamation
- US Forest Service
- National Park Service
- State of Colorado
- ACEC
- National Conservation Area
- Class III
- Class II
- Class I
- Private
- Planning Area
- Highway
- Rivers / Streams



No warranty is made by the Bureau of Land Management as to the accuracy, reliability, or completeness of these data. Original data were compiled from various sources. This information may not meet National Map Accuracy Standards. This project was developed through digital means and may be updated without notice.



Map produced by the Bureau of Land Management, Grand Junction Field Office