

Attachment E

Hughes Subsidiaries/Ownership Interests

Hierarchical Ownership HUGHES ELECTRONICS CORPORATION Entity Name	Ownership Percentage (Under 20%-red)	State of Inc. /Formation/ Partnership
Hughes Electronics Corporation (HEC)		DE
Baja Hughes S. de R.L. de C.V.	99% HEC 1% HNSISC	Mexico
ChinaCast Technologies (BVI) Limited	15.12%	BVI
Digital Media & Communications II LP	22.22%	DE
Digital Media & Communications III	6.25%	DE
DIRECTV Broadband, Inc. (Formerly "Telocity Delaware, Inc.")	97.6%	DE
→ Aspen Internet Systems, Inc.	100%	CA
→ PDO Communications, Inc.	100%	CA
DIRECTV Global, Inc.	100%	DE
→ DIRECTV Global Digital Media, Inc.	100%	DE
DIRECTV Enterprises, Inc.(DTVE)	100%	DE
→ Broadband Sports, Inc. ¹	2%	DE
→ Crown Media Holdings, Inc.	8.2%	DE
→ DIRECTV Customer Services, Inc.	100%	DE
→ DIRECTV, Inc.	100%	CA
→ → TIVO Inc. Publicly Held	7.7%	DE
→ → Discovery Health Media, LLC	Equity participation	
→ → HiDef Broadcasting System, LLC ²	Equity Option	
→ DIRECTV Merchandising, Inc.	100%	DE
→ DIRECTV Operations, Inc.	100%	CA
→ Oxygen Media LLC	-- (warrants only)	
→ Quokka Sports, Inc. ³	⁴	
→ THOMSON Multimedia S.A. Publicly Held	3.1%	France
→ USSB II, Inc.	100%	MN
→ XM Satellite Radio Holdings, Inc. Publicly Held	12.5% 26.1% Motient	DE
First HNS Mauritius Ltd. (FHNSM)	10% HNSISC 90% HEC	Mauritius
→ Goldman Agent Private Limited (India)	49%	India
→ Hughes Tele.com (India) Limited Publicly Held	4.3% Kellerton 4.9% HEC 8.7% Goldman 15.7% FHNSM	India
→ Kellerton Ventures Corp. (BVI)	100%	BVI
GlobeComm Systems	2.3%	DE
→ Netsat Express, Inc.	2.5% HEC 81% GlobeComm	DE
Hatwave Hellenic American Telecommunications Wave Ltd.	13.7%	Cyprus
→ Ukrainian Wave Ltd.	48.8%	Ukraine
HNS India Private Limited (India)	99.99%	India
HNS-Clairtel GP, Inc.	100%	DE
HNS-India VSAT, Inc. (HNSIV)	100%	DE

¹ Broadband Sports, Inc. - no longer in business, and stated it is making an assignment for the benefit of creditors

² DIRECTV Inc. has the right to acquire up to 20% of the outstanding equity in HDBS at various times.

³ Quokka Sports, Inc. - filed for bankruptcy protection under Chapter 11 on 4/27/2001. NASDAQ has halted trading of the common stock on 4/19/2001 and commenced de-listing proceedings.

⁴ DTV Enterprises holds (1) principal amount of \$3,548,513.14 7.0% convertible note, (2) 2,725.99 shares of 7.0% Series A Senior Convertible Preferred Stock and (3) Warrants to purchase 181,250 shares of common stock exercisable at \$8.00

Attachment E

Hierarchical Ownership HUGHES ELECTRONICS CORPORATION Entity Name		Ownership Percentage (Under 20%-red)	State of Inc. /Formation/ Partnership
→	Hughes Escorts Communications Limited	49% HNSIV 23% EML	India
→	→ Ceycom Global Comm. Ltd.	24%	Sri Lanka
	HNS-India, Inc. (HNSI)	100%	DE
→	HNS-Mauritius Holdings	.01% HNSIV 99.99% HNSI	Mauritius
→	→ Hughes Software Systems Limited	Publicly Held .02% HEC 56.14% HNSMH	India
→	→ Escorts Motors Ltd. (EML)	49% HNSMH	India
	HNS-Shanghai, Inc.	100%	DE
→	Shanghai Hughes Network Systems Co., Ltd.	51%	China
	Hughes Aircraft Holdings Canada Ltd.	100%	Canada
	Hughes do Brasil Electronica e Comunicacoes S.A.	10% HTS 90% HEC	Brazil
	Hughes Electronics Foreign Sales Corporation	100%	Barbados
	Hughes Electronics International Corporation	100%	DE
	Hughes Electronics Realty, Inc.	100%	DE
	Hughes Electronics Systems International	100%	CA
	Hughes Foreign Sales Corporation	49.8% PAS 50% HEC	US Virgin Isl.
	Hughes Internacional de Mexico, S.A. de C.V.	0.01% HNSISC 99.99% HEC	Mexico
→	HNS de Mexico, S.A. de C.V.	0.03% HEC 99.97% HIDM	Mexico
	Hughes Investment Management Company	100%	CA
	Hughes Network Systems Europe Srl	.06% HNSISC 99.94% HEC	Italy
	Hughes Network Systems France SarL	0.01% HNSISC 99.99% HEC	France
	Hughes Network Systems International Service Company (HNSISC)	100%	DE
	Hughes Network Systems Limited	100%	UK
→	HOT Telecommunications, N.V.	100%	Netherlands
→	→ HOT Telecommunications, Limited	100%	UK
→	→ → HOT Telecommunications GmbH	100%	Germany
→	→ → → HOT Telecommunications S.r.L.	100%	Italy
	Hughes Telecommunications & Space Company (HTS)	100%	DE
→	Hughes Global Services, Inc.	100%	DE
→	Hughes Communications, Inc. (HCI)	100%	CA
→	→ DIRECTV International, Inc. (DTVI)	100%	DE
→	→ → Global Japan LLC	1.34%	DE
→	→ → → DTVJ Holdings, Inc. (DTVJH)	100%	DE
→	→ → → → Hughes Electronics Japan Co., Ltd. (HEJYK)	1.99% DTVI 98.01% DTVJH	Japan
→	→ → → → → Sky Perfect Communications, Inc. Publicly Held	5.416%	Japan
→	→ → → → DTM, Inc.	.2% HEJJK 99.8% DTVI	Japan
→	→ → → → → DIRECTV Latin America Holdings, Inc. (DTVLAH)	100%	CA
→	→ → → → → Bartoletti Holdings, B.V.	55%	Netherlands
→	→ → → → → → Galaxy Entertainment Iberoamerica S.L.	100%	Spain
→	→ → → → → → → ViaDigital DTS Distribuidos de Television Digital, S.A.	6.9%	Spain
→	→ → → → → → → DIRECTV Latin America, LLC (DTVLA)	74.687%	DE

Attachment E

Hierarchical Ownership <u>HUGHES ELECTRONICS CORPORATION</u> Entity Name						Ownership Percentage (Under 20%-red)	State of Inc. /Formation/ Partnership
→	→	→	→	→	DIRECTV de Uruguay Ltda.	100%	Uruguay
→	→	→	→	→	GLA Argentina S.r.L.	99% DTVLA 1% GLAI	Argentina Partnership
→	→	→	→	→	GLA Brasil Ltda. (GLAB)	99% DTVLA 1% GLAI	Brazil Partnership
→	→	→	→	→	→ TV Capital Participacoes Ltda. (TVAC)	1% GLAI 99% GLAB	Brazil Partnership
→	→	→	→	→	→ → GLB Ltda. (GLB)	1% TVAC-B 99% TVAC	Brazil Partnership
→	→	→	→	→	→ TV Nacional Participacoes Ltda. (TVN)	1% GLAI 99% GLAB	Brazil Partnership
→	→	→	→	→	→ → TVA Banda C Ltda. (TVAC-B)	1% GLB 99% TVN	Brazil Partnership
→	→	→	→	→	Galaxy Caribbean Limited	100%	Trinidad
→	→	→	→	→	Galaxy Latin America Brasil Ltda.	99% DTVLA 1% GLAV	Brazil
→	→	→	→	→	Galaxy Latin America Investments, LLC (GLAI)	100%	Delaware
→	→	→	→	→	→ Galaxy Latin America Investment & Company, S. en C.	1% DTVLA 99% GLAI	Puerto Rican Partnership
→	→	→	→	→	GLA de Venezuela, S.r.L. (GLAV)	1% DTVLAH 99% DTVLA	Venezuela partnership
→	→	→	→	→	Galaxy de Colombia, Ltda.	15% DTVLAH 51.6903% DTVLA	Colombia
→	→	→	→	→	Galaxy Entertainment de Argentina, S.A. ⁵	20% DTVLAH 29% DTVLA	Argentina
→	→	→	→	→	Galaxy Entertainment de Venezuela, C.A.	19.5%	Venezuela
→	→	→	→	→	Grupo Galaxy Mexicana, S.R.L. de C.V.	92%	Mexico
→	→	→	→	→	Satelites de Puerto Rico Ltd.	40%	BVI
→	→	→	→	→	Servicios Galaxy Sat III R, C.A.	19.5%	Venezuela
→	→	→	→	→	Sports Acquisition Ltd.	44.5%	Bahamas
→	→	→	→	→	→ Sports Acquisition (U.S.) Inc.	100%	Delaware
→	→	→	→	→	SurFin Ltd.	75.049%	Bahamas
→	→	→	→	→	Dish Placement Services	100%	Bahamas
→	→	→	→	→	White Holding, B.V. (WHBV)	100%	Netherlands
→	→	→	→	→	→ White Holding Mexico	99% WHBV 1% SurFin	Mexico
→	→	→	→	→	Hughes Communications Galaxy, Inc. (HCGI)	100%	CA
→	→	→	→	→	Hughes Communications Satellite Services, Inc. (HCSSI)	100%	CA
→	→	→	→	→	Motient Corporation (AMSC) Publicly Held	13.50%	DE
→	→	→	→	→	DTVI ONE, Inc. (DTV11)	100%	CA
→	→	→	→	→	California Broadcast Center, LLC (CBC)	1% DTV12 49.5% DTV11 49.5% HCSSI	DE
→	→	→	→	→	DTVI TWO, Inc. (DTV12)	1% HCI 1% DTVI 1% HCGI 97% HCSSI	CA

⁵ In addition, 29% is held by DTVLA in trust for Darlene

Attachment E

Hierarchical Ownership HUGHES ELECTRONICS CORPORATION				Ownership Percentage (Under 20%-red)	State of Inc. /Formation/ Partnership		
Entity Name							
→	→	PanAmSat Corporation (PAS)	Publicly Held	80.63% (59.15% HCGI, 11.83% HCSSI, 9.65% HCI)	DE		
→	→	→	Horizons Satellite, LLC	50% PAS	DE		
→	→	→	NAP of the Americas LLC	2% PAS	FL		
→	→	→	NET/36, Inc.	100%	DE		
→	→	→	PanAmSat International Limited	100%	Bermuda		
→	→	→	PanAmSat Communications Carrier Services, Inc.	100%	CA		
→	→	→	PanAmSat Communications Japan, Inc.	100%	CA		
→	→	→	PanAmSat Communications Services, Inc.	100%	CA		
→	→	→	PanAmSat International Holdings, Inc.	100%	DE		
→	→	→	→	USHI, Inc.	100%	DE	
→	→	→	PanAmSat International Systems, Inc. (PISI)	40% USHI 60% PAS	DE		
→	→	→	→	PanAmSat Africa (Proprietary) Ltd.	100%	So. Africa	
→	→	→	→	PanAmSat Asia Pty. Ltd.	100%	Australia	
→	→	→	→	PanAmSat Asia Carrier Services, Inc.	100%	DE	
→	→	→	→	PanAmSat Capital Corporation	100%	DE	
→	→	→	→	PanAmSat Carrier Services, Inc.	100%	DE	
→	→	→	→	PanAmSat Europe Limited	100%	UK	
→	→	→	→	PanAmSat FSC Incorporated	100%	Barbados	
→	→	→	→	PanAmSat India, Inc.	100%	DE	
→	→	→	→	→	PanAmSat India Marketing, LLC	100%	DE
→	→	→	→	PanAmSat International Employment, Inc.	100%	DE	
→	→	→	→	PanAmSat Licensee Corp.	100%	DE	
→	→	→	→	PanAmSat International Sales, Inc.	100%	DE	
→	→	→	→	→	Controladora Satelital del Mexico S. de R.L. de C.V.	49%	Mexico
→	→	→	→	→	PanAmSat do Brasil	99%	Brazil
→	→	→	→	→	PanAmSat Korea Limited	50% PAS Int'l Sales 50% PAS Asia Pty Ltd.	So. Korea
→	→	→	→	→	PanAmSat Asia (Hong Kong) Limited	50% PAS Int'l Sales 50% PISI	Hong Kong
→	→	→	→	→	WP COM, S. de R.L. de C.V.	49% PAS Int'l Sales	Mexico
→	→	→	→	→	PanAmSat International Systems Limited	100%	Cayman Islands
→	→	→	→	→	PanAmSat International Systems, L.L.C.	100%	DE
→	→	→	→	→	Service and Equipment Corporation	100%	DE
→	→	→	→	→	Southern Satellite Corp.	100%	CT
→	→	→	→	→	Southern Satellite Licensee Corporation	100%	DE
→	→	→	→	→	PanAmSat Marketing Corporation	100%	DE
→	→	→	→	→	PT. Pasifik Satelit Nusantara	7.23% HEC	Indonesia
→	→	→	→	→	Hughes-Avicom International, Inc. (HAI)	100%	CA
→	→	→	→	→	Avicom International S.A.	97.3% HAI	Mexico
→	→	→	→	→	Interactive Distance Learning, Inc.	49%	DE
→	→	→	→	→	One Touch Systems, Inc.	100%	CA
→	→	→	→	→	Medical Science Partners II, L.P.	3.47%	DE
→	→	→	→	→	NeTune Communications, Inc.	8.1% HEC 3.1% PAS 2.3% DTVE	DE

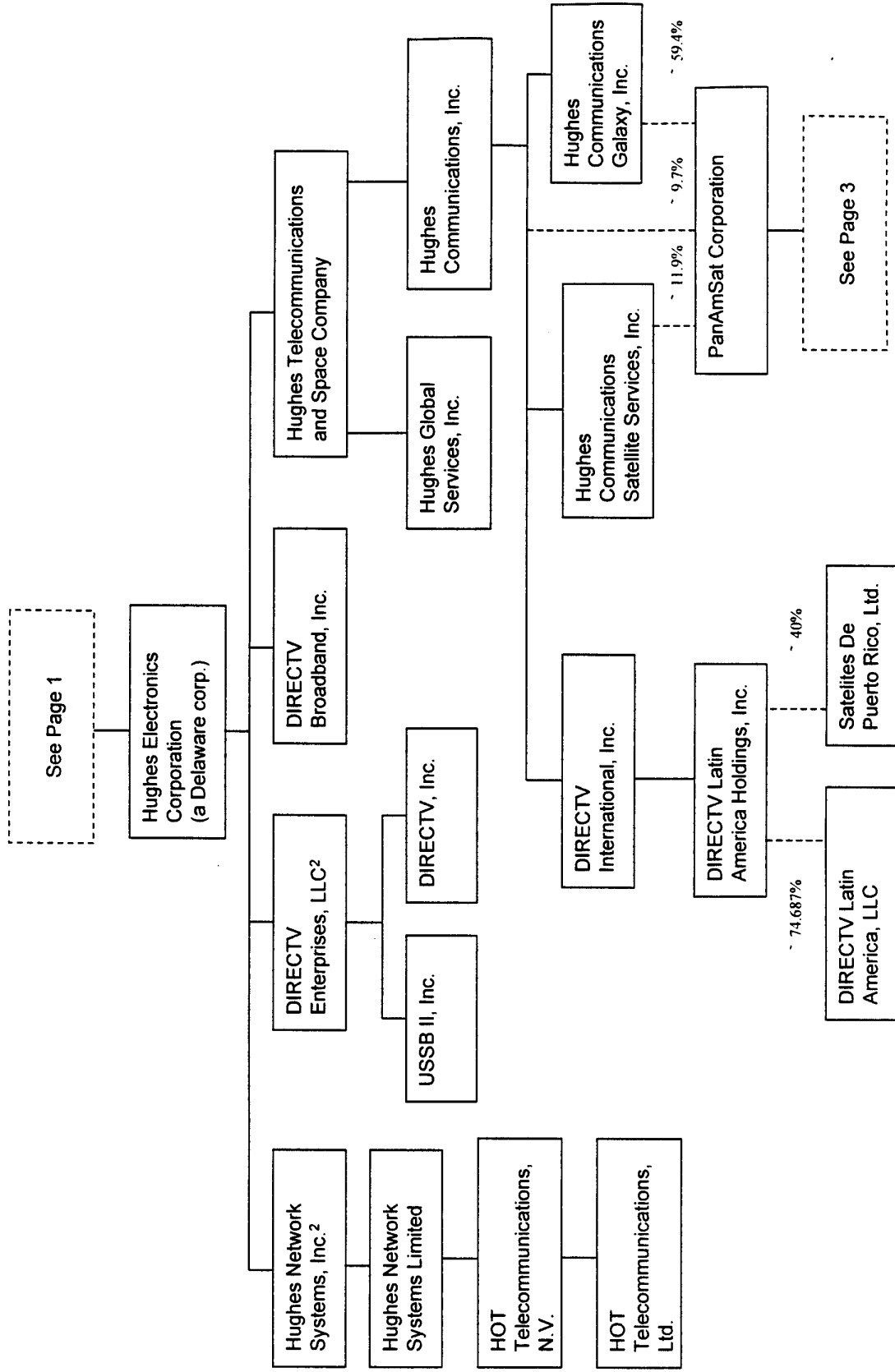
Attachment E

Hierarchical Ownership HUGHES ELECTRONICS CORPORATION Entity Name		Ownership Percentage (Under 20%-red)	State of Inc. /Formation/ Partnership
Nippon Avionics Co., Ltd.	Publicly Held	10.03%	Japan
PT. Hughes Network Systems (Indonesia)		10% HNSISC 90% HEC	Indonesia
Rx Marketplace.com, Inc. (RXM)		9.0%	
RxNetwork LLC		9.0% HEC 91% RXM	DE
Technologies for Information and Entertainment III, L.P.		8.84%	DE
Wink Communications, Inc.	Publicly Held	1.25%	CA

DC_DOCS\420223.2[W2000]

Attachment E

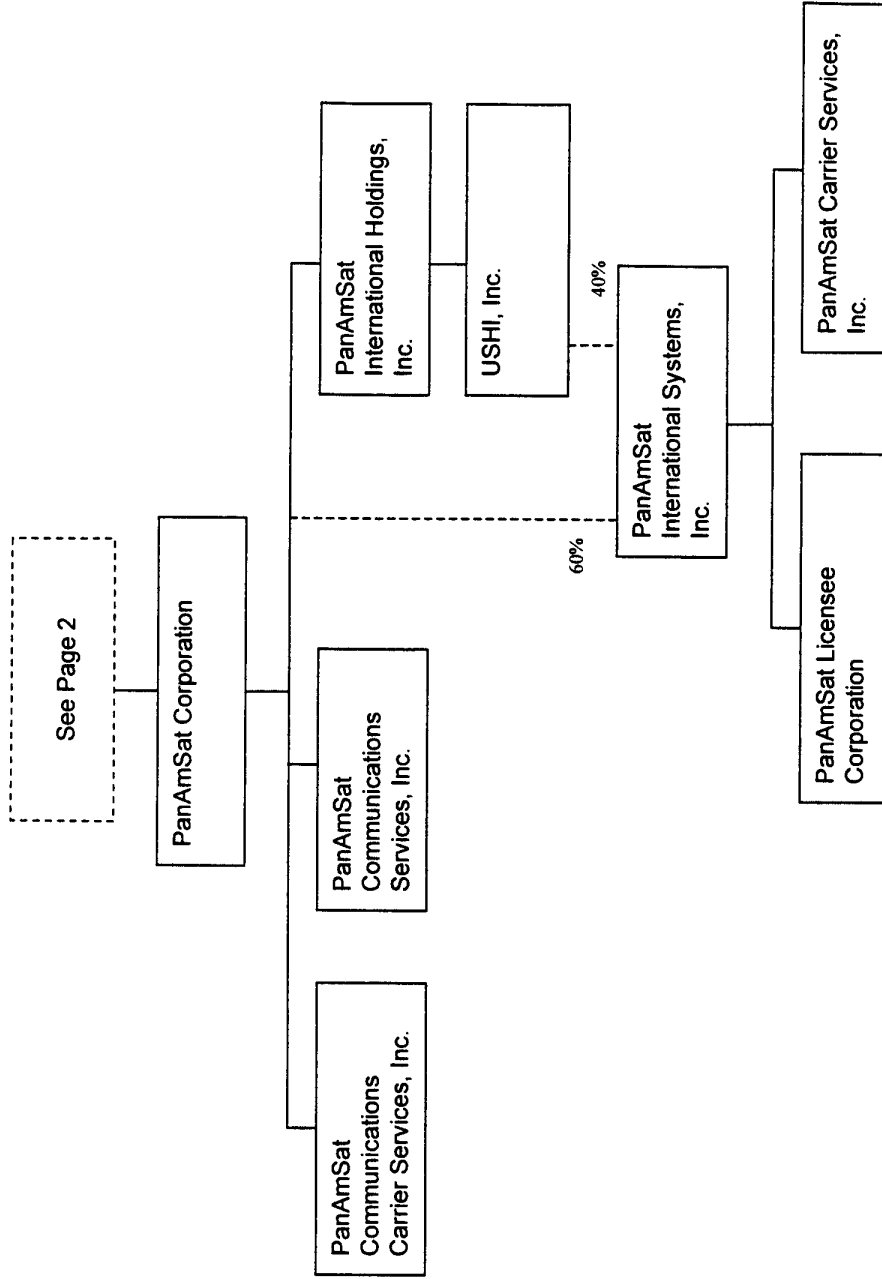
GM/Hughes Structure Pre-split-off and Pre-merger¹



¹Chart only includes entities that are relevant to the control of FCC licenses.
²See notes 22 and 23 to narrative portion of Application.

Attachment E

GM/Hughes Structure Pre-split-off
and Pre-merger¹



¹Chart only includes entities that are relevant to the control of FCC licenses.

Attachment E

Hughes Electronics Corporation is a wholly-owned subsidiary of General Motors Corporation ("GM"). Information relating to Hughes Electronics Corporation and GM is set forth below.

HEC HOLDINGS CORPORATION

State of Incorporation: Delaware

Principal Place of Business: 200 North Sepulveda Blvd.
El Segundo, CA 90245
Phone: (310) 662-9985
Fax: (310) 322-1862

Primary Business Activities: Produces communications systems and products, including through subsidiary entities; operates direct broadcast satellite services through subsidiary entities.

Principal Shareholders: Hughes Electronics Corporation is a wholly-owned subsidiary of General Motors Corporation.

GENERAL MOTORS CORPORATION

State of Incorporation: New York

Principal Place of Business: 3440 West Grand Blvd.
Detroit, MI 48202-3091

Primary Business Activities: Makes automobiles and trucks; supplies automotive systems and components; produces advanced electronics systems and products; makes locomotives; and provides financial, insurance, mortgage banking, and investment services.

Principal Shareholders:

State Street Bank and Trust Company, a Massachusetts company, (acting as trustee for various trusts and employee benefit plans) beneficially owns approximately 14% of the common stock of General Motors. The address of State Street Bank and Trust Company is: 225 Franklin Street, Boston, MA 02110.

U.S. Trust Corporation, a New York corporation, beneficially owns approximately 20% of the Class H Common Stock of General Motors. The address of U.S. Trust Corporation is 114 West 47th St., New York, NY 10036.