

Canaan Mountain Wilderness

March 30, 2009

(This map is an unofficial version of the legislative map referenced in Public Law 111-11)

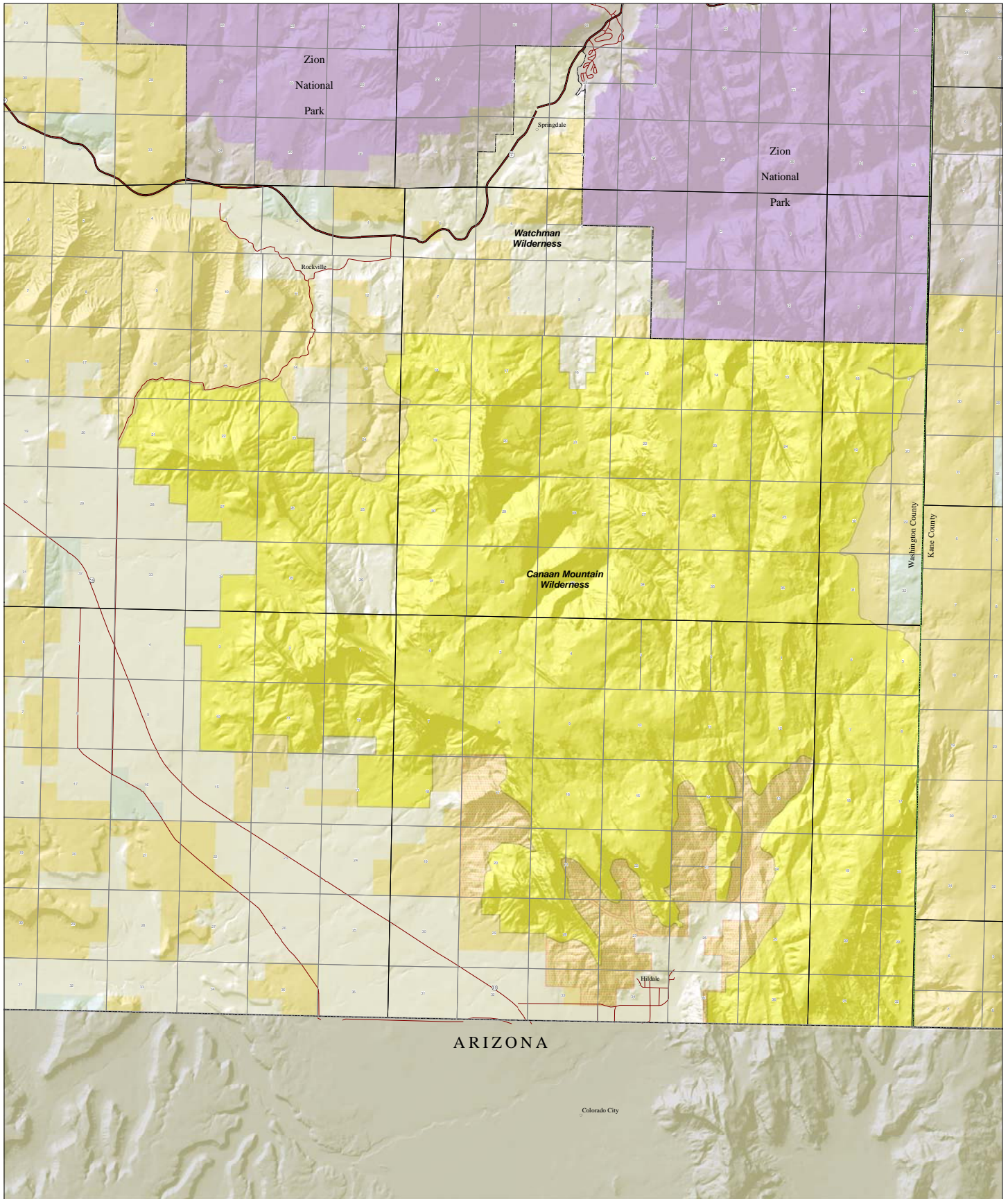
R 11 W

R 10 W

T 41 S

T 42 S

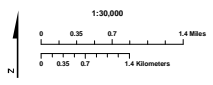
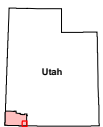
T 43 S



ARIZONA

Colorado City

Washington County
Kane County



- | | | |
|-------------------------|-------------------------------------|-------------------------------|
| State Land | National Forest | Land Released from WSA Status |
| State, County, Parks | National Forest Wilderness | NPS Land |
| Indian Reservation | Proposed National Forest Wilderness | Proposed NPS Wilderness |
| Public Land | BLM Wilderness | Proposed Wilderness Additions |
| Proposed BLM Wilderness | | |