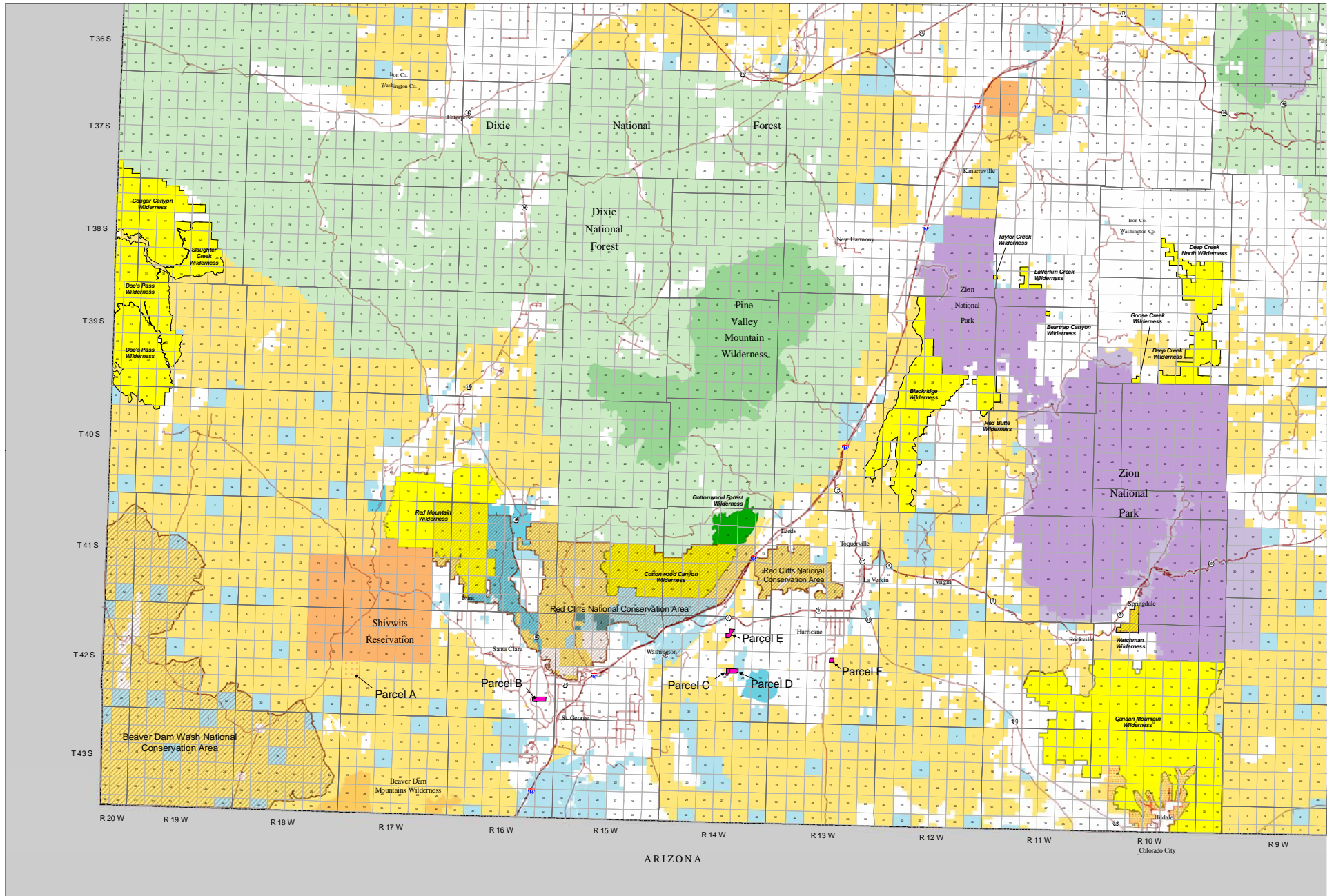


Washington County Growth and Conservation Act

March 30, 2009

(This map is an unofficial version of the legislative map referenced in Public Law 111-11)



- | | | | |
|-------------------------|-------------------------------------|---|-------------------------------|
| State Land | National Forest | Administrative jurisdiction transferred from the BLM to NPS | Land Released from WSA Status |
| State, County, Parks | National Forest Wilderness | National Conservation Area | |
| Indian Reservation | Proposed National Forest Wilderness | | |
| Public Land | NPS Land | | |
| BLM Wilderness | Proposed NPS Wilderness | | |
| Proposed BLM Wilderness | | | |

