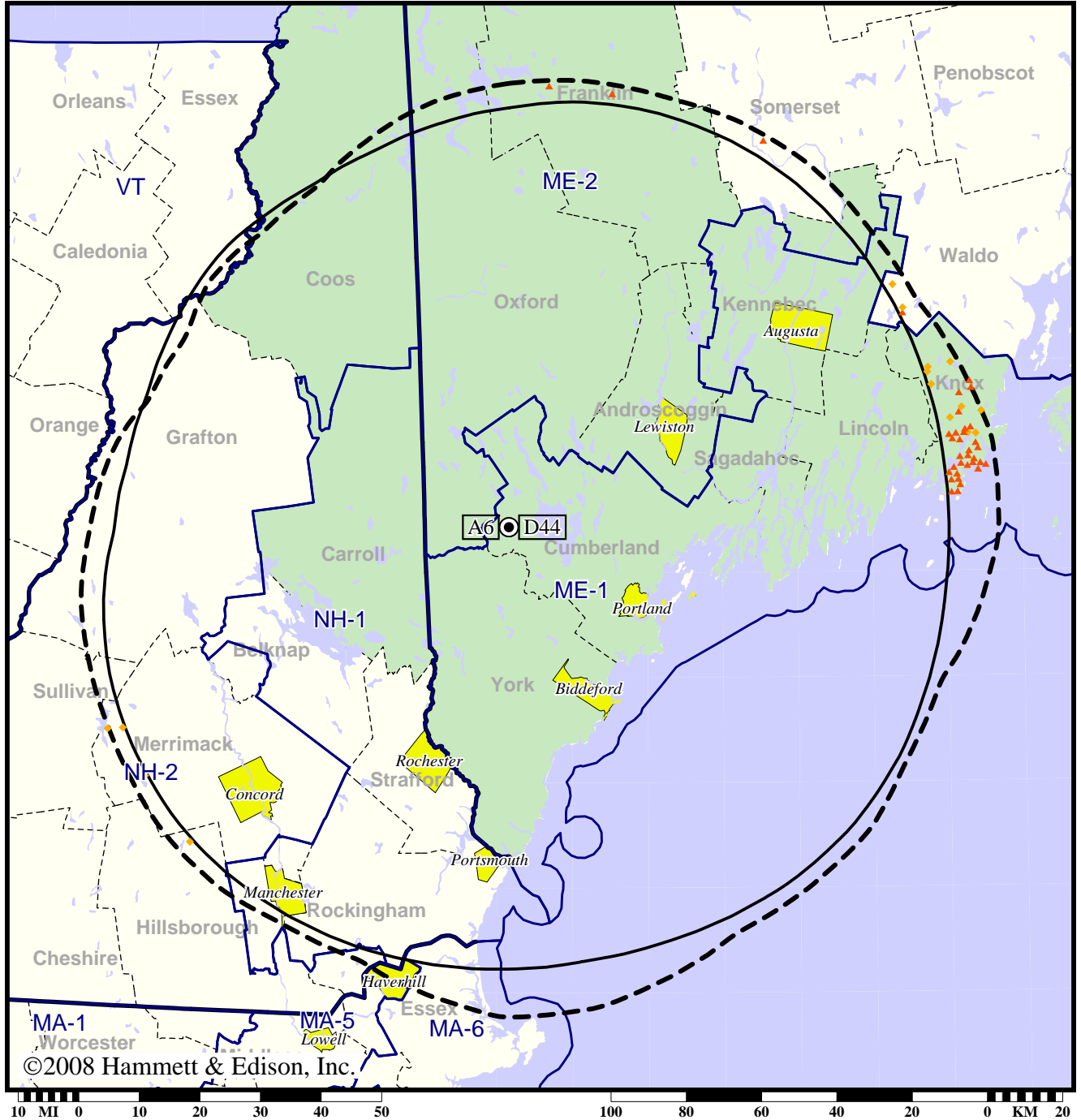


TV Station WCSH • Analog Channel 6, DTV Channel 44 • Portland, ME

Expected Change In Coverage: Licensed Operation

Licensed (solid): 1000 kW ERP at 588 m HAAT, Network: NBC
vs. Analog (dashed): 100 kW ERP at 610 m HAAT, Network: NBC

Market: Portland-Auburn, ME



- (no symbol) No change in coverage
- ◆ Coverage lost but still served by same network
- ▲ Coverage lost and no other service by same network

Portland-Auburn, ME

WCSH

Population Receiving Analog Service 983,693
Population Receiving Digital Service..... 1,246,193

The following statistics pertain only to the area outside
the analog service contour:

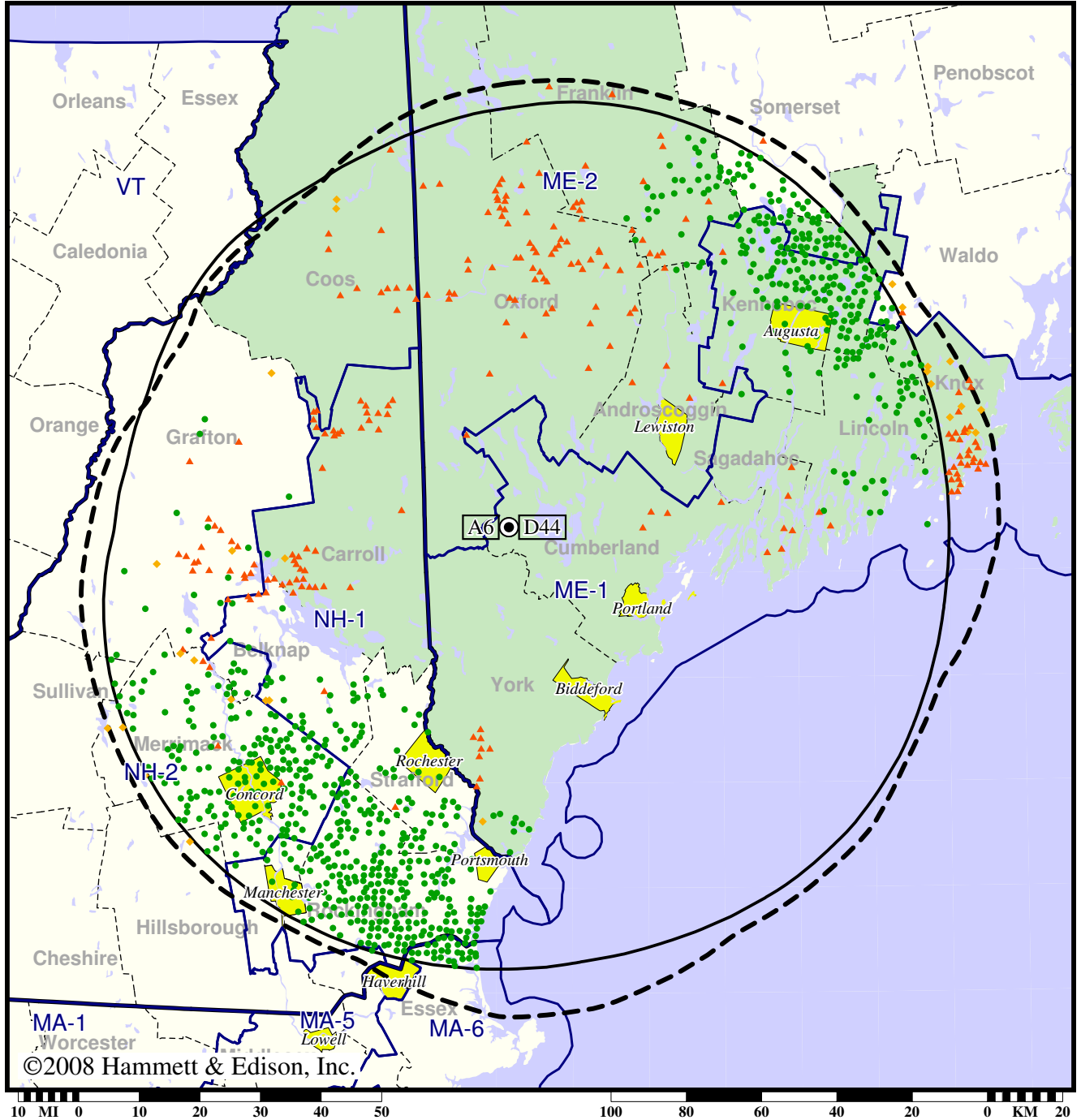
Analog Population Losing Service 8,207
Population Gaining Digital Service 0
Net Gain -8,207

TV Station WCSH • Analog Channel 6, DTV Channel 44 • Portland, ME

Expected Change In Coverage: Licensed Operation

Licensed (solid): 1000 kW ERP at 588 m HAAT, Network: NBC
vs. Analog (dashed): 100 kW ERP at 610 m HAAT, Network: NBC

Market: Portland-Auburn, ME



- Coverage gained after DTV transition
- (no symbol) No change in coverage
- ◆ Coverage lost but still served by same network
- ▲ Coverage lost and no other service by same network

Portland-Auburn, ME

WCSH

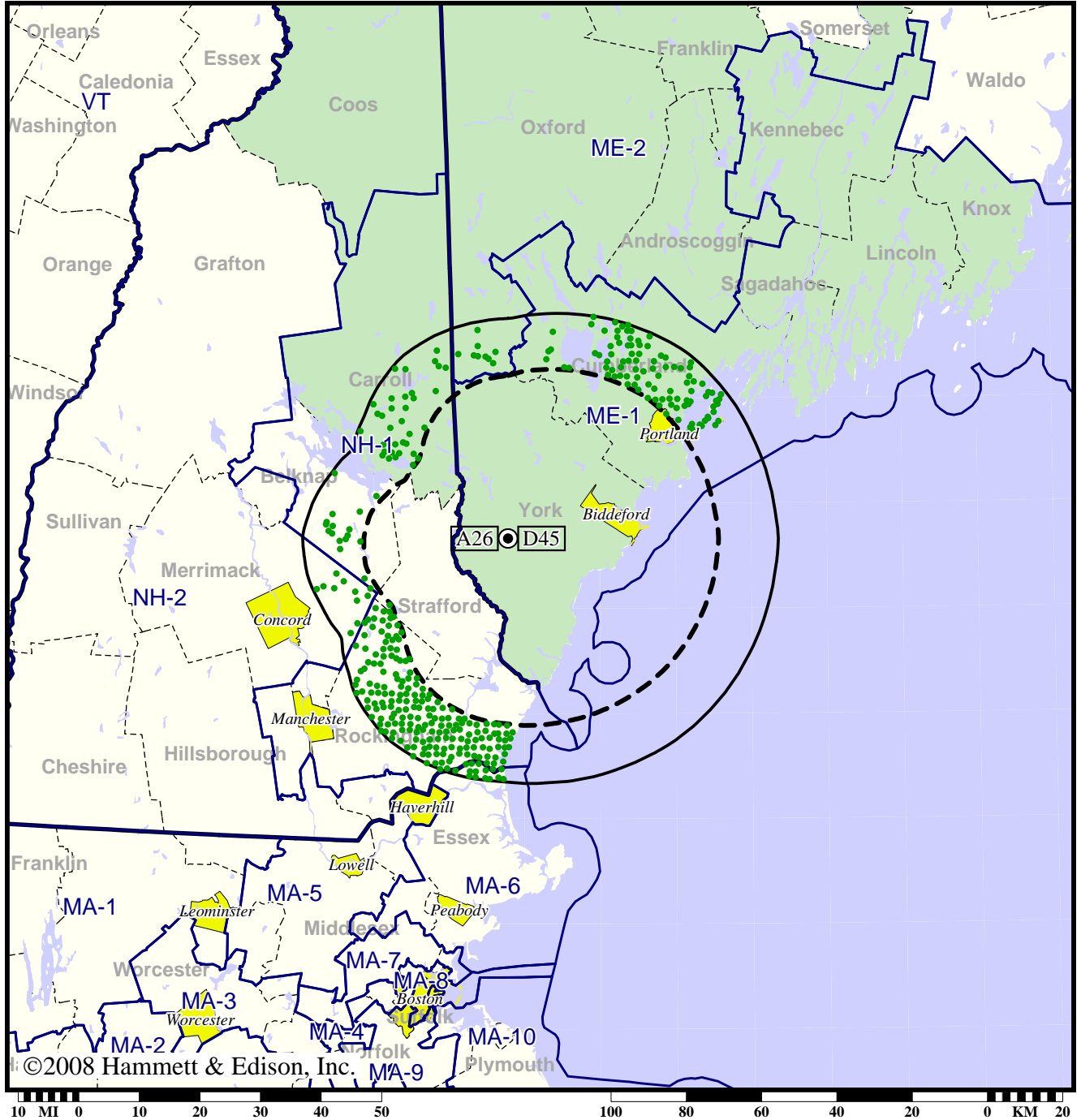
Population Receiving Analog Service	983,693
Population Receiving Digital Service.....	1,246,193
Analog Population Losing Service	27,411
Population Gaining Digital Service	289,911
Net Gain	262,500

Station WMEA-TV • Analog Channel 26, DTV Channel 45 • Biddeford, ME

Expected Change In Coverage: Licensed Operation

Licensed (solid): 50.0 kW ERP at 231 m HAAT, Network: PBS
vs. Analog (dashed): 133 kW ERP at 231 m HAAT, Network: PBS

Market: Portland-Auburn, ME



- Coverage gained after DTV transition
- (no symbol) No change in coverage

Portland-Auburn, ME

WMEA-TV

Population Receiving Analog Service 494,633
Population Receiving Digital Service..... 641,740

The following statistics pertain only to the area outside
the analog service contour:

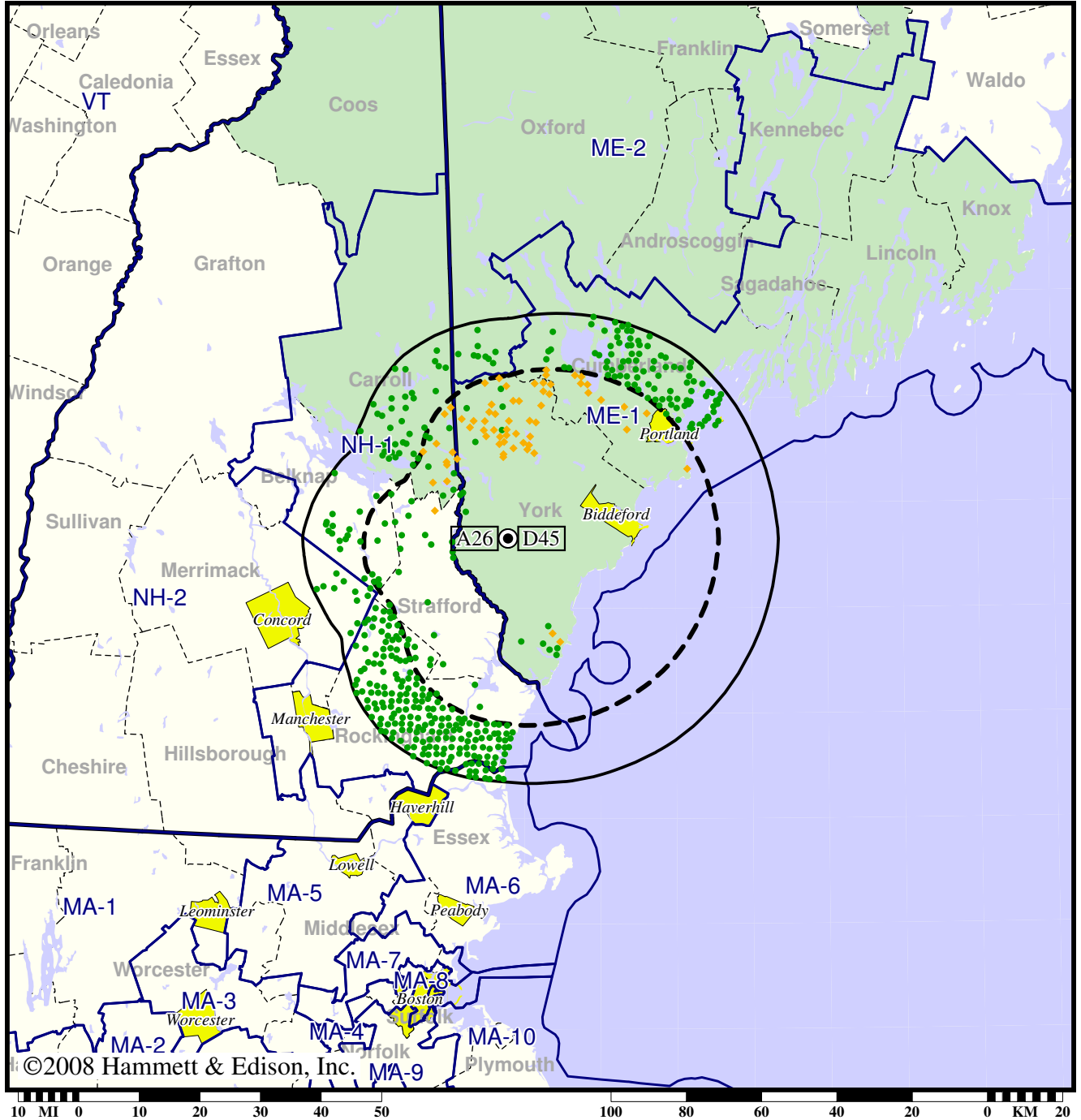
Analog Population Losing Service 0
Population Gaining Digital Service 146,690
Net Gain 146,690

Station WMEA-TV • Analog Channel 26, DTV Channel 45 • Biddeford, ME

Expected Change In Coverage: Licensed Operation

Licensed (solid): 50.0 kW ERP at 231 m HAAT, Network: PBS
vs. Analog (dashed): 133 kW ERP at 231 m HAAT, Network: PBS

Market: Portland-Auburn, ME



- Coverage gained after DTV transition
- (no symbol) No change in coverage
- ◆ Coverage lost but still served by same network

Portland-Auburn, ME

WMEA-TV

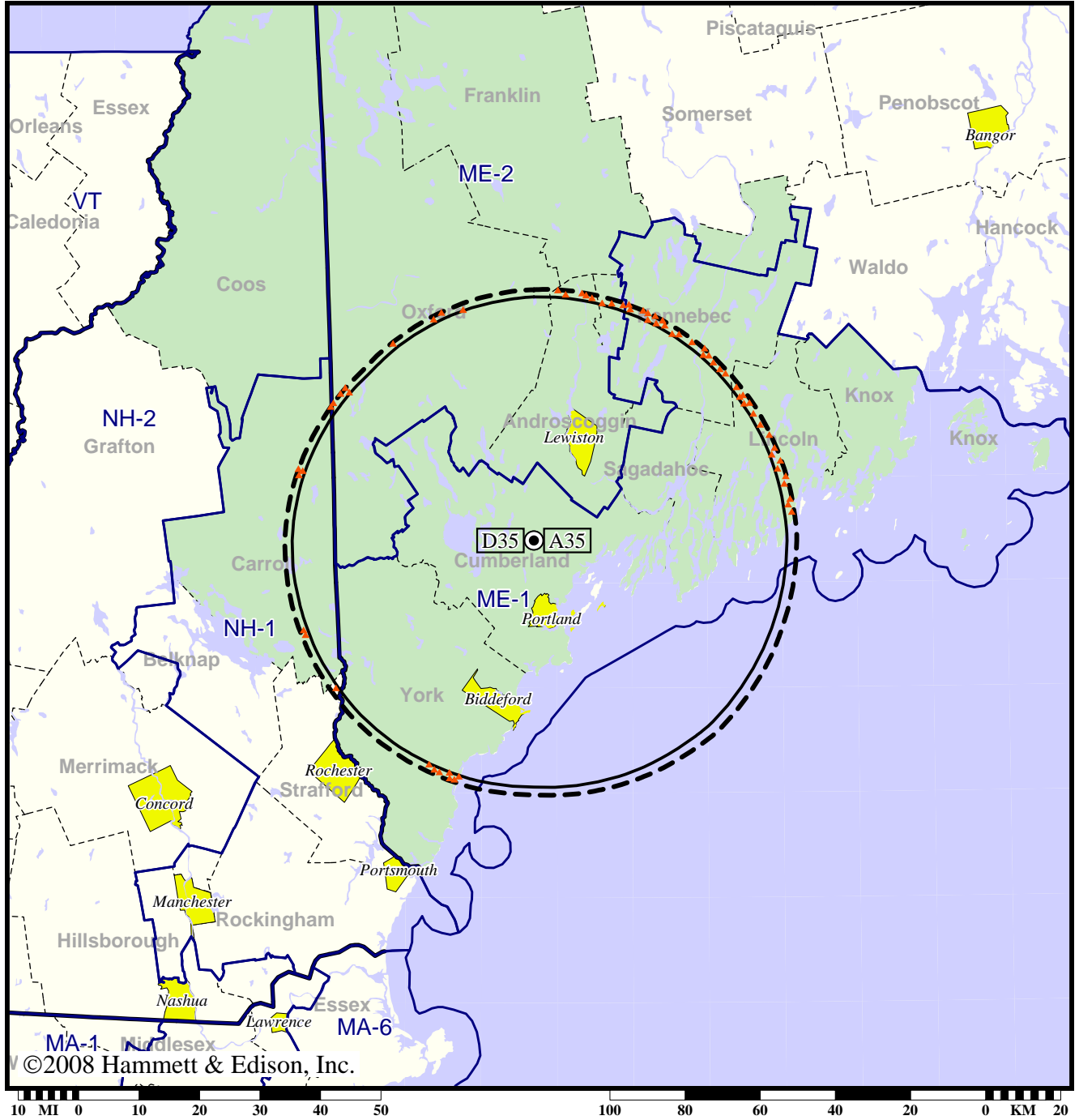
Population Receiving Analog Service	494,633
Population Receiving Digital Service.....	641,740
Analog Population Losing Service	9,952
Population Gaining Digital Service	157,059
Net Gain	147,107

TV Station WPME • Analog Channel 35, DTV Channel 35 • Lewiston, ME

Expected Change In Coverage: Granted Construction Permit

CP (solid): 14.3 kW ERP at 278 m HAAT
vs. Analog (dashed): 1100 kW ERP at 278 m HAAT

Market: Portland-Auburn, ME



- (no symbol) No change in coverage
- ▲ Coverage lost after DTV transition

Portland-Auburn, ME

WPME

Population Receiving Analog Service 612,526
Population Receiving Digital Service..... 606,361

The following statistics pertain only to the area outside
the analog service contour:

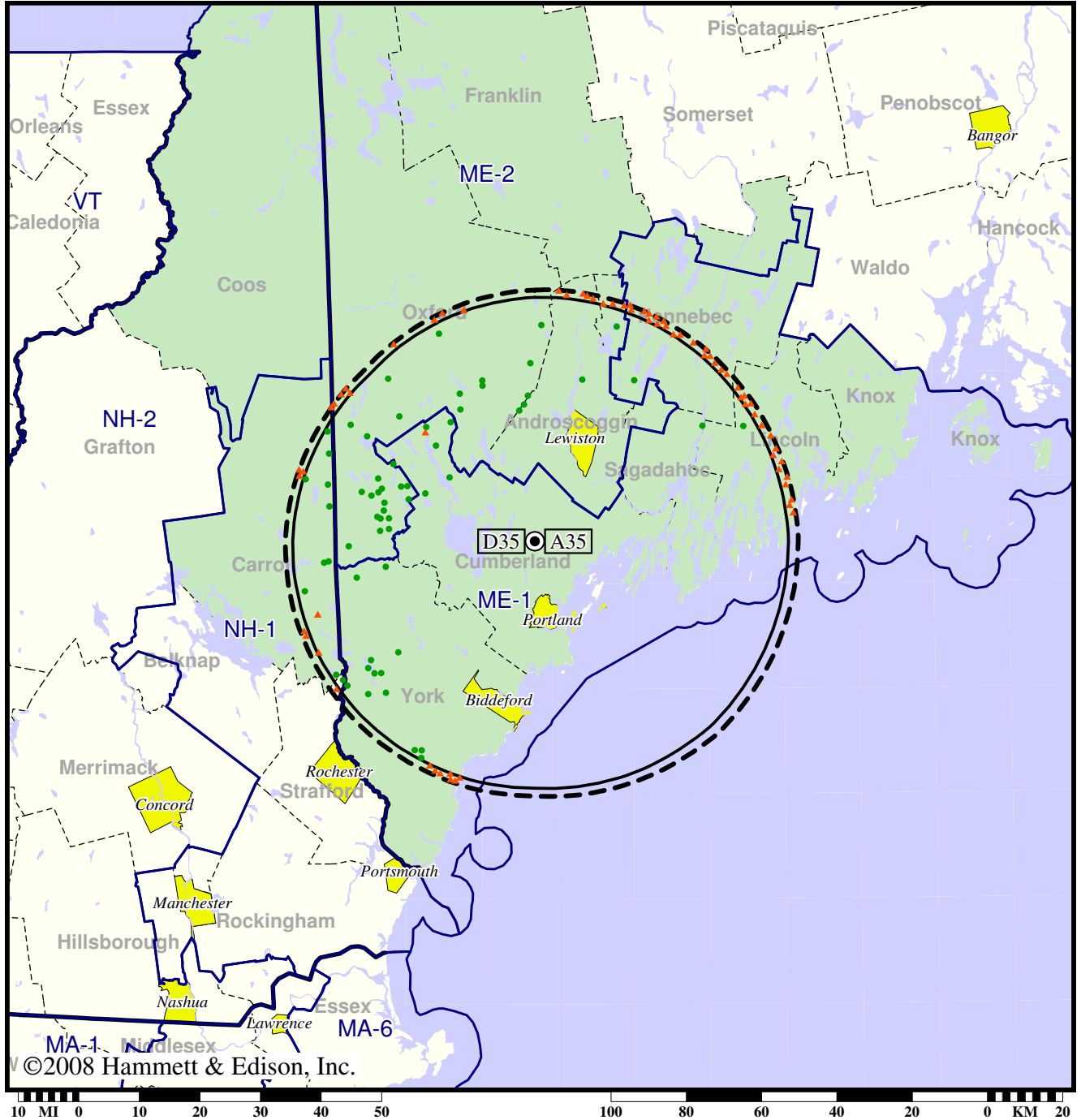
Analog Population Losing Service 12,092
Population Gaining Digital Service 0
Net Gain -12,092

TV Station WPME • Analog Channel 35, DTV Channel 35 • Lewiston, ME

Expected Change In Coverage: Granted Construction Permit

CP (solid): 14.3 kW ERP at 278 m HAAT
vs. Analog (dashed): 1100 kW ERP at 278 m HAAT

Market: Portland-Auburn, ME



- Coverage gained after DTV transition
- (no symbol) No change in coverage
- ▲ Coverage lost after DTV transition

Portland-Auburn, ME

WPME

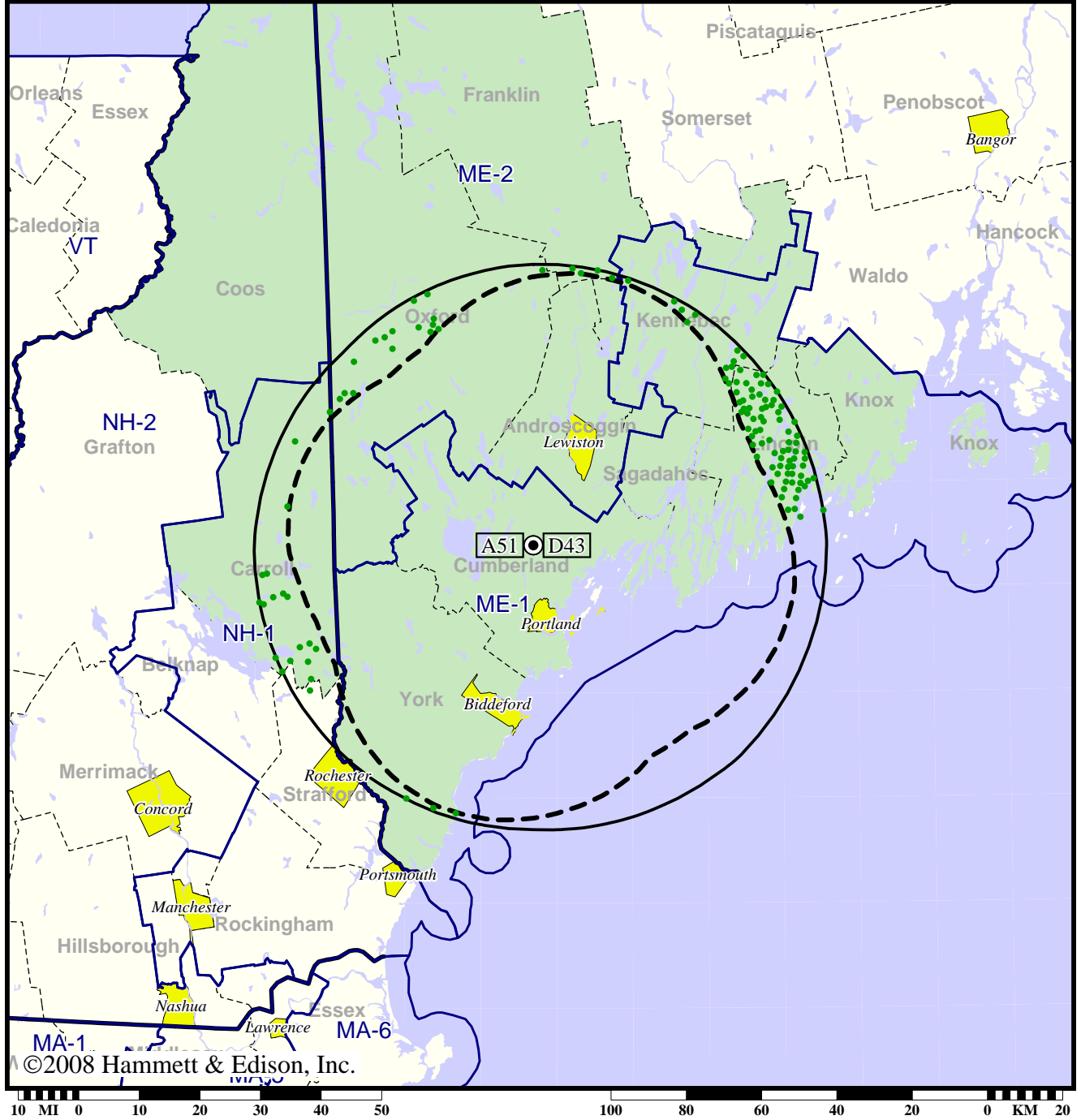
Population Receiving Analog Service	612,526
Population Receiving Digital Service.....	606,361
Analog Population Losing Service	12,517
Population Gaining Digital Service	6,352
Net Gain	-6,165

TV Station WPXT • Analog Channel 51, DTV Channel 43 • Portland, ME

Expected Change In Coverage: Licensed Operation

Licensed (solid): 137 kW ERP at 254 m HAAT
vs. Analog (dashed): 3020 kW ERP at 280 m HAAT

Market: Portland-Auburn, ME



- Coverage gained after DTV transition
- (no symbol) No change in coverage

Portland-Auburn, ME

WPXT

Population Receiving Analog Service	613,611
Population Receiving Digital Service.....	572,224

The following statistics pertain only to the area outside the analog service contour:

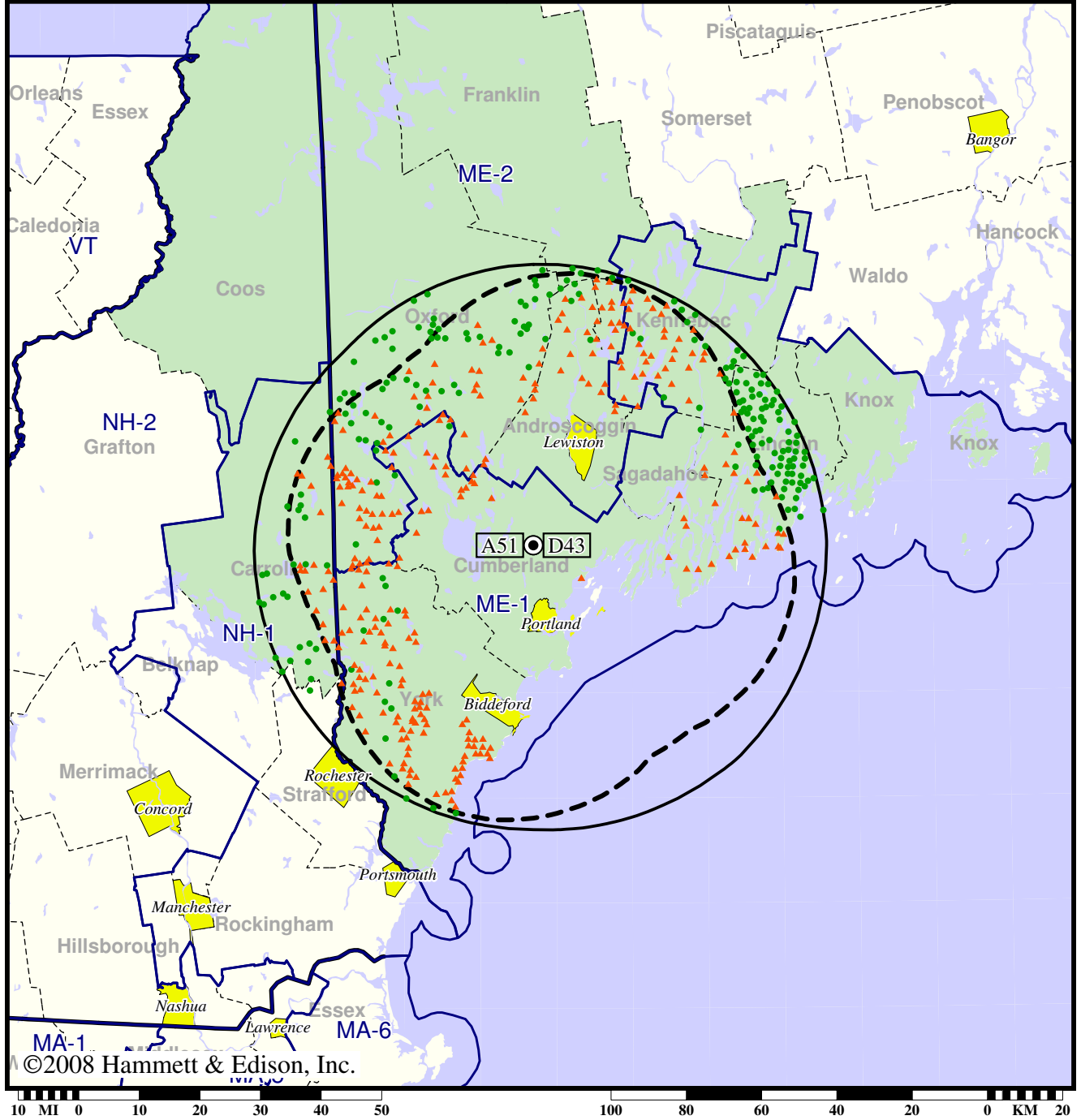
Analog Population Losing Service	0
Population Gaining Digital Service	12,137
Net Gain	12,137

TV Station WPXT • Analog Channel 51, DTV Channel 43 • Portland, ME

Expected Change In Coverage: Licensed Operation

Licensed (solid): 137 kW ERP at 254 m HAAT
vs. Analog (dashed): 3020 kW ERP at 280 m HAAT

Market: Portland-Auburn, ME



- Coverage gained after DTV transition
- (no symbol) No change in coverage
- ▲ Coverage lost after DTV transition

Portland-Auburn, ME

WPXT

Population Receiving Analog Service	613,611
Population Receiving Digital Service.....	572,224
Analog Population Losing Service	64,266
Population Gaining Digital Service	22,879
Net Gain	-41,387