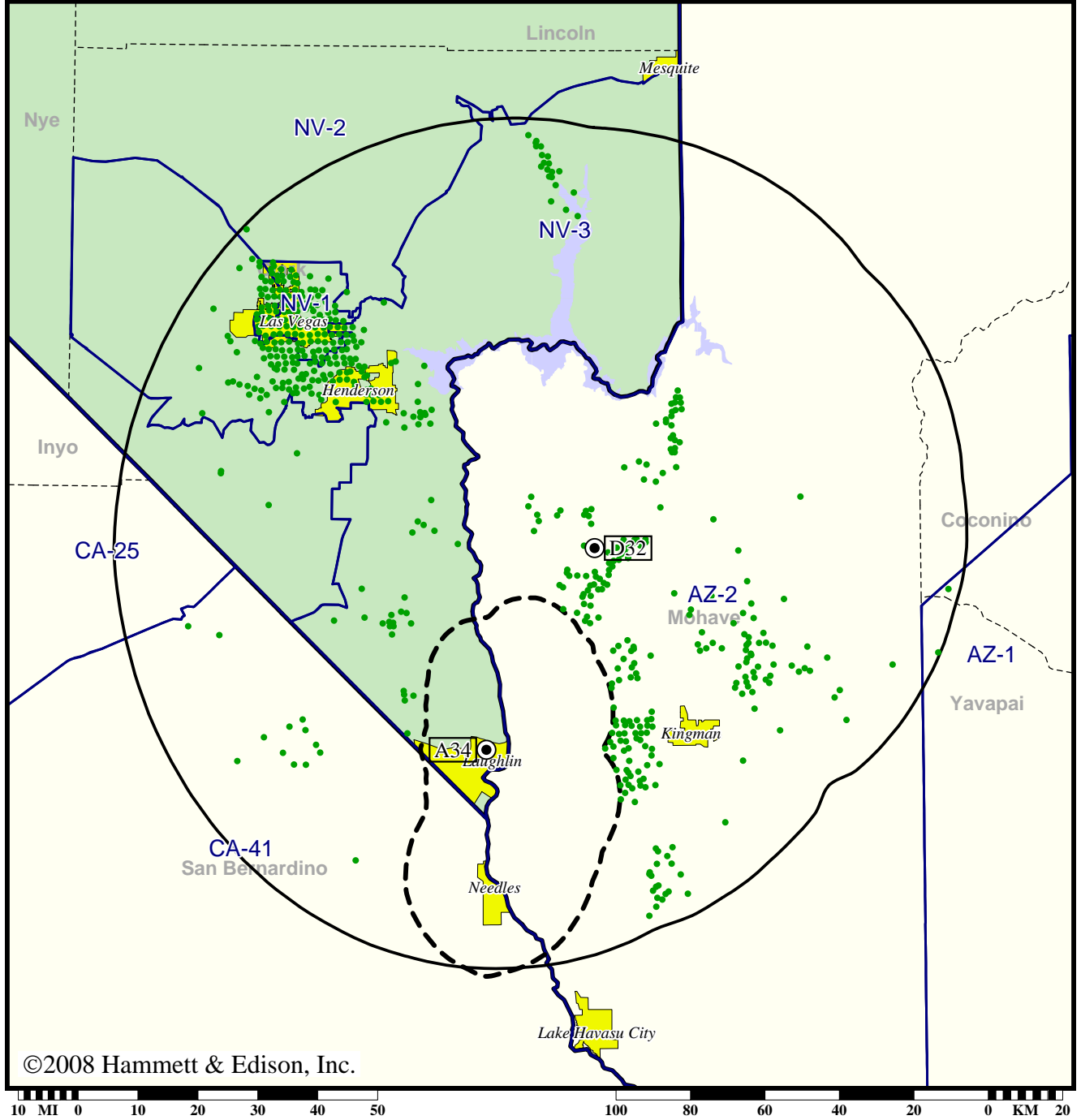


TV Station KMCC • Analog Channel 34, DTV Channel 32 • Laughlin, NV

Expected Change In Coverage: Post-Transition Appendix B Facility

Appendix B (solid): 1000 kW ERP at 607 m HAAT
vs. Analog (dashed): 416 kW ERP at -63 m HAAT

Market: Las Vegas, NV



©2008 Hammett & Edison, Inc.

- Coverage gained after DTV transition
- (no symbol) No change in coverage

Las Vegas, NV

KMCC

Population Receiving Analog Service	63,163
Population Receiving Digital Service.....	1,267,459

The following statistics pertain only to the area outside the analog service contour:

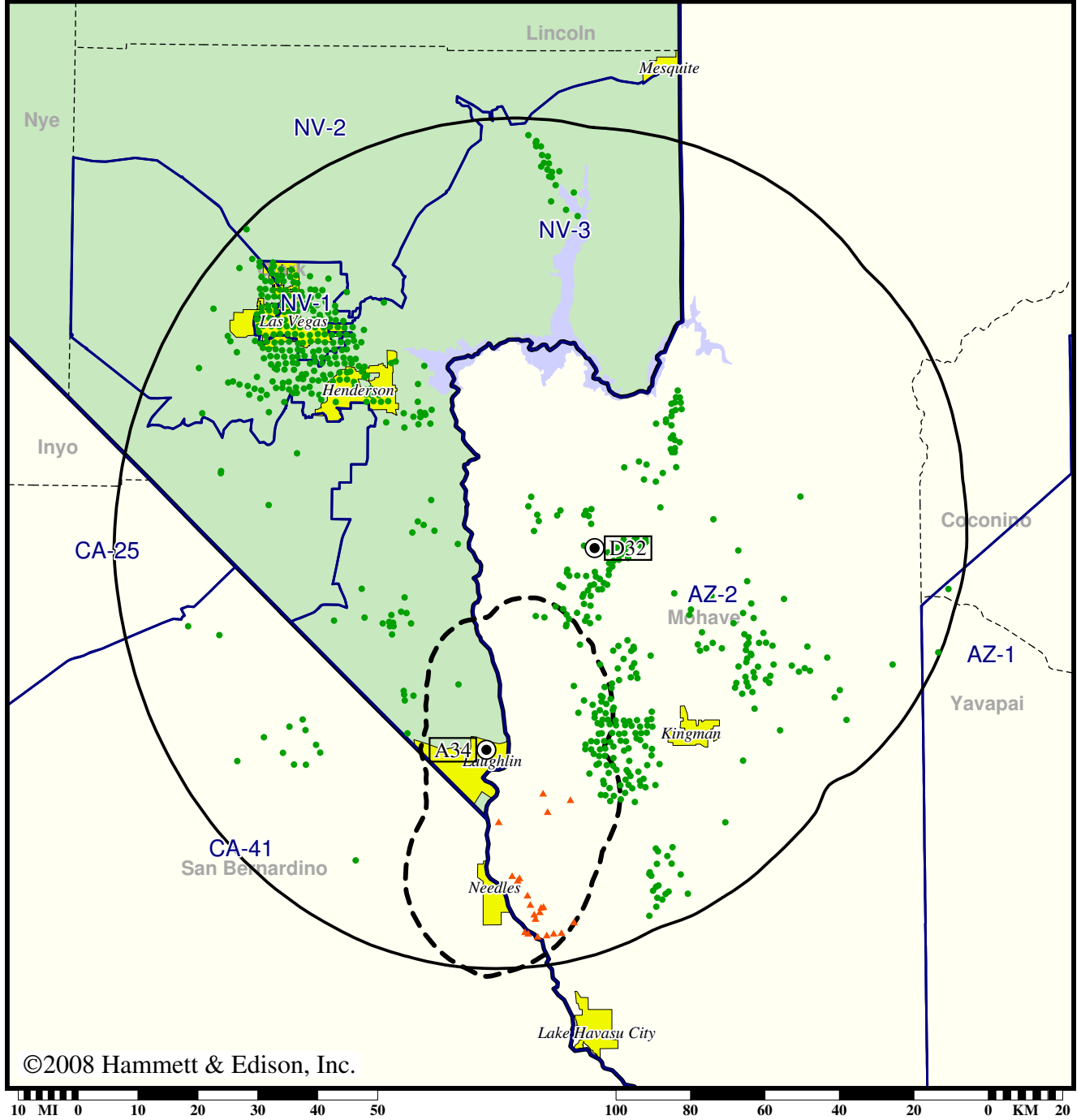
Analog Population Losing Service	0
Population Gaining Digital Service	1,205,045
Net Gain	1,205,045

TV Station KMCC • Analog Channel 34, DTV Channel 32 • Laughlin, NV

Expected Change In Coverage: Post-Transition Appendix B Facility

Appendix B (solid): 1000 kW ERP at 607 m HAAT
vs. Analog (dashed): 416 kW ERP at -63 m HAAT

Market: Las Vegas, NV



©2008 Hammett & Edison, Inc.

- Coverage gained after DTV transition
- (no symbol) No change in coverage
- ▲ Coverage lost after DTV transition

Las Vegas, NV

KMCC

Population Receiving Analog Service	63,163
Population Receiving Digital Service.....	1,267,459
Analog Population Losing Service	3,237
Population Gaining Digital Service	1,207,533
Net Gain	1,204,296