



Knoxville, TN

WATE-TV

Population Receiving Analog Service ..... 1,268,987  
Population Receiving Digital Service..... 1,265,996

The following statistics pertain only to the area outside  
the analog service contour:

Analog Population Losing Service ..... 10,737  
Population Gaining Digital Service ..... 0  
Net Gain ..... -10,737



Knoxville, TN

WATE-TV

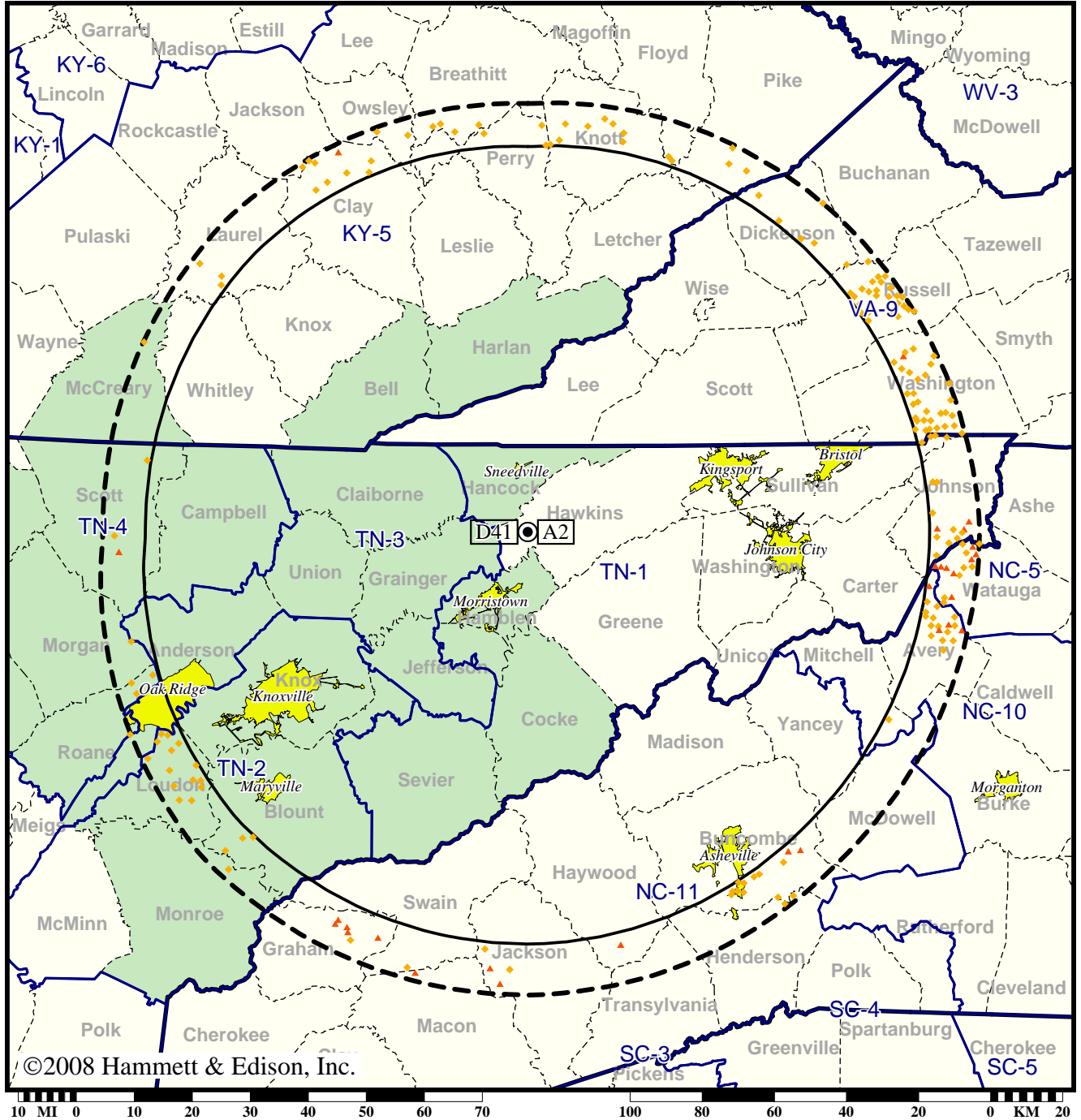
Population Receiving Analog Service .....	1,268,987
Population Receiving Digital Service.....	1,265,996
Analog Population Losing Service .....	83,107
Population Gaining Digital Service .....	80,116
Net Gain .....	-2,991

Station WETP-TV • Analog Channel 2, DTV Channel 41 • Sneedville, TN

Expected Change In Coverage: Licensed Operation

Licensed (solid): 445 kW ERP at 567 m HAAT, Network: PBS  
vs. Analog (dashed): 100 kW ERP at 536 m HAAT, Network: PBS

Market: Knoxville, TN



- (no symbol) No change in coverage
- ◆ Coverage lost but still served by same network
- ▲ Coverage lost and no other service by same network

Knoxville, TN

WETP-TV

Population Receiving Analog Service ..... 1,500,438  
Population Receiving Digital Service..... 1,394,822

The following statistics pertain only to the area outside  
the analog service contour:

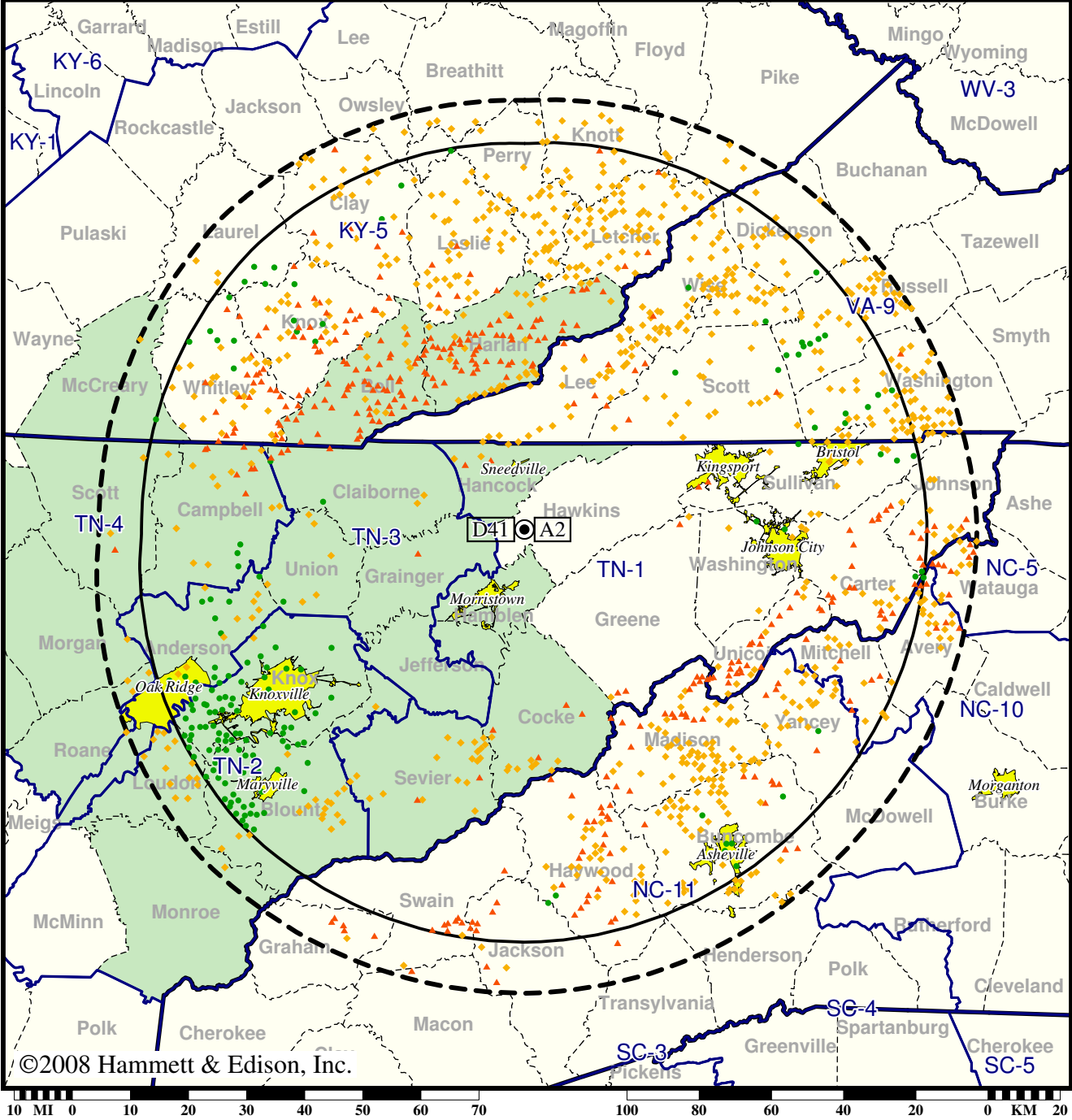
Analog Population Losing Service ..... 37,231  
Population Gaining Digital Service ..... 0  
Net Gain ..... -37,231

Station WETP-TV • Analog Channel 2, DTV Channel 41 • Sneedville, TN

Expected Change In Coverage: Licensed Operation

Licensed (solid): 445 kW ERP at 567 m HAAT, Network: PBS  
 vs. Analog (dashed): 100 kW ERP at 536 m HAAT, Network: PBS

Market: Knoxville, TN



©2008 Hammett & Edison, Inc.

- Coverage gained after DTV transition
- (no symbol) No change in coverage
- ◆ Coverage lost but still served by same network
- ▲ Coverage lost and no other service by same network

Knoxville, TN

WETP-TV

Population Receiving Analog Service .....	1,500,438
Population Receiving Digital Service.....	1,394,822
Analog Population Losing Service .....	228,231
Population Gaining Digital Service .....	122,615
Net Gain .....	-105,616

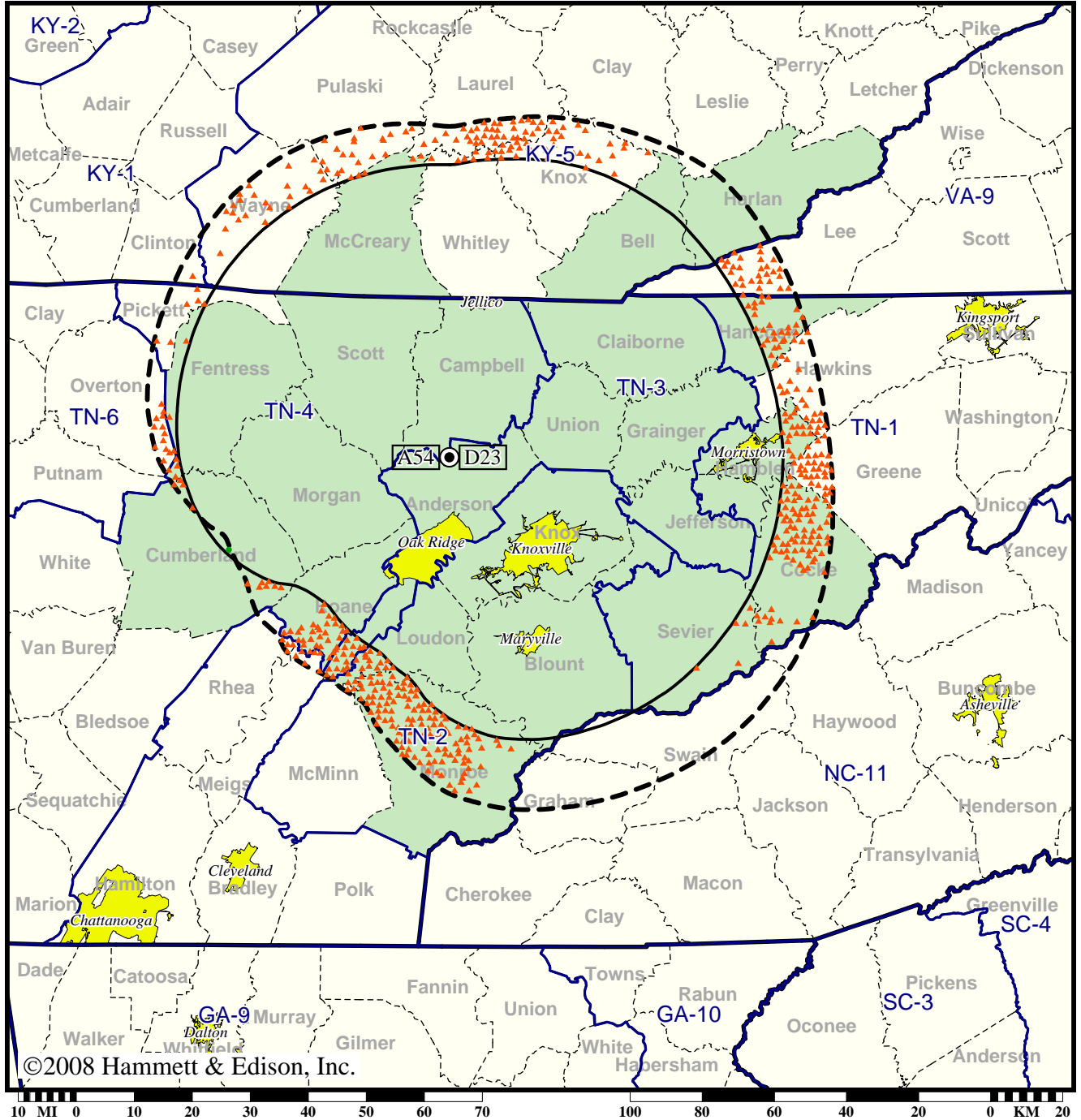


TV Station WPXK • Analog Channel 54, DTV Channel 23 • Jellico, TN

Expected Change In Coverage: Licensed Operation

Licensed (solid): 18.0 kW ERP at 608 m HAAT  
vs. Analog (dashed): 4900 kW ERP at 618 m HAAT

Market: Knoxville, TN



©2008 Hammett & Edison, Inc.

- Coverage gained after DTV transition
- (no symbol) No change in coverage
- ▲ Coverage lost after DTV transition

Knoxville, TN

WPXX

Population Receiving Analog Service ..... 1,016,623  
Population Receiving Digital Service..... 938,100

The following statistics pertain only to the area outside  
the analog service contour:

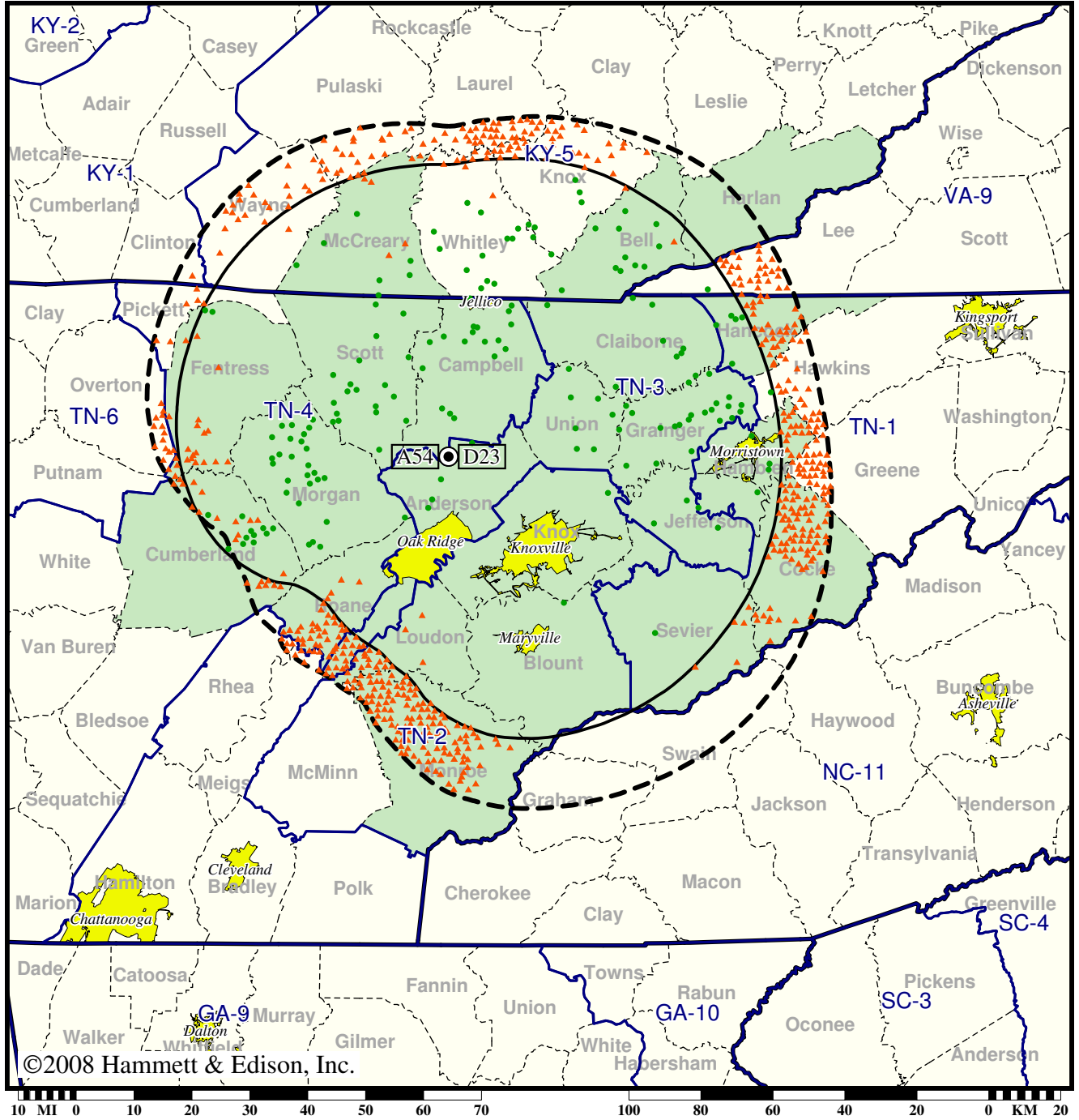
Analog Population Losing Service ..... 91,429  
Population Gaining Digital Service ..... 72  
Net Gain ..... -91,357

TV Station WPXK • Analog Channel 54, DTV Channel 23 • Jellico, TN

Expected Change In Coverage: Licensed Operation

Licensed (solid): 18.0 kW ERP at 608 m HAAT  
vs. Analog (dashed): 4900 kW ERP at 618 m HAAT

Market: Knoxville, TN



©2008 Hammett & Edison, Inc.

- Coverage gained after DTV transition
- (no symbol) No change in coverage
- ▲ Coverage lost after DTV transition

Knoxville, TN

WPXX

Population Receiving Analog Service .....	1,016,623
Population Receiving Digital Service.....	938,100
Analog Population Losing Service .....	96,570
Population Gaining Digital Service .....	18,047
Net Gain .....	-78,523