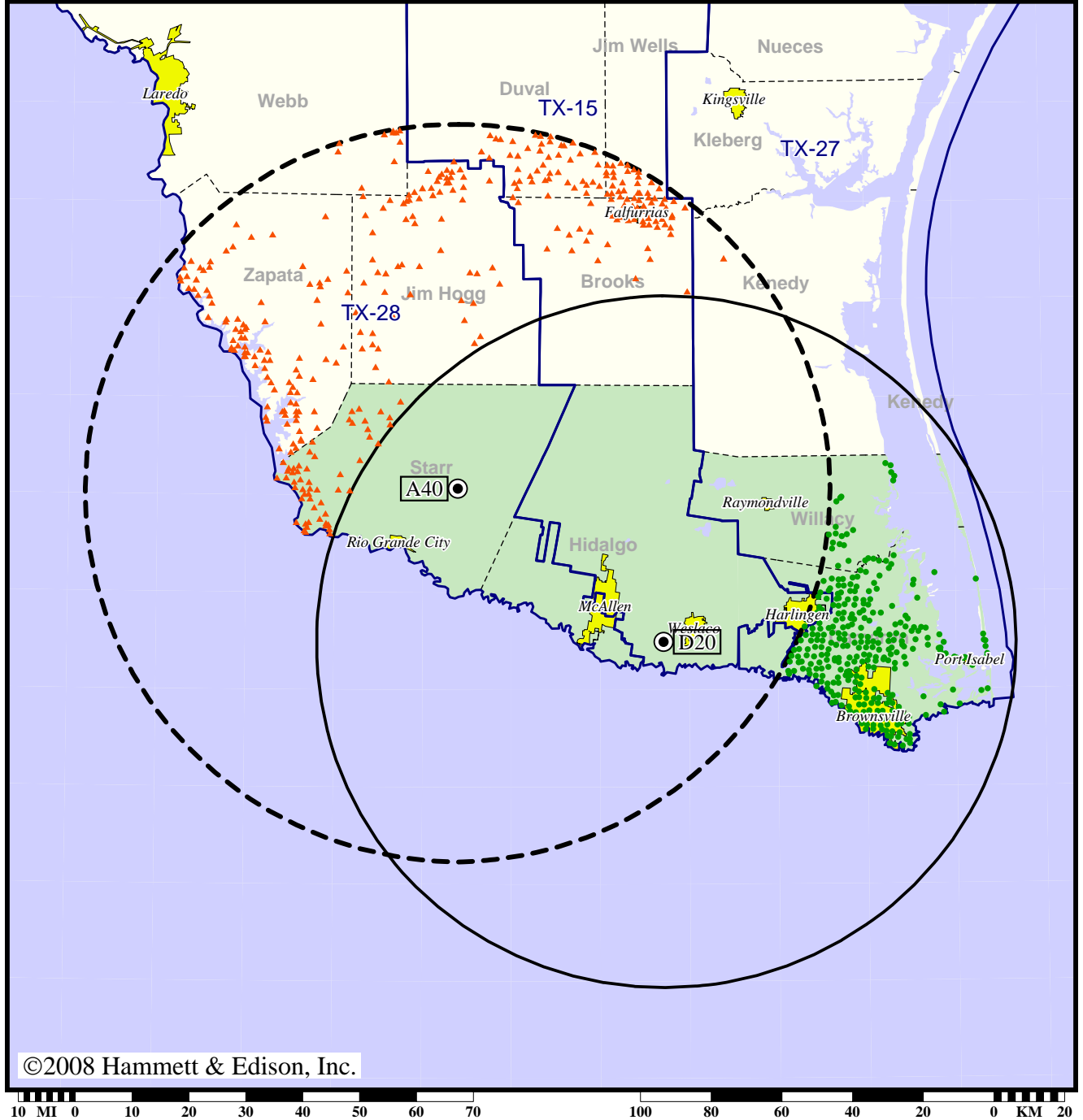


TV Station KTLM • Analog Channel 40, DTV Channel 20 • Rio Grande City, TX

Expected Change In Coverage: Post-Transition Appendix B Facility

Appendix B (solid): 1000 kW ERP at 287 m HAAT
vs. Analog (dashed): 5000 kW ERP at 577 m HAAT

Market: Harlingen-Weslaco-Brownsville-McAllen, TX



- Coverage gained after DTV transition
- (no symbol) No change in coverage
- ▲ Coverage lost after DTV transition

Harlingen-Weslaco-Brownsville-McAllen, TX

KTLM

Population Receiving Analog Service	724,763
Population Receiving Digital Service.....	971,173

The following statistics pertain only to the area outside the analog service contour:

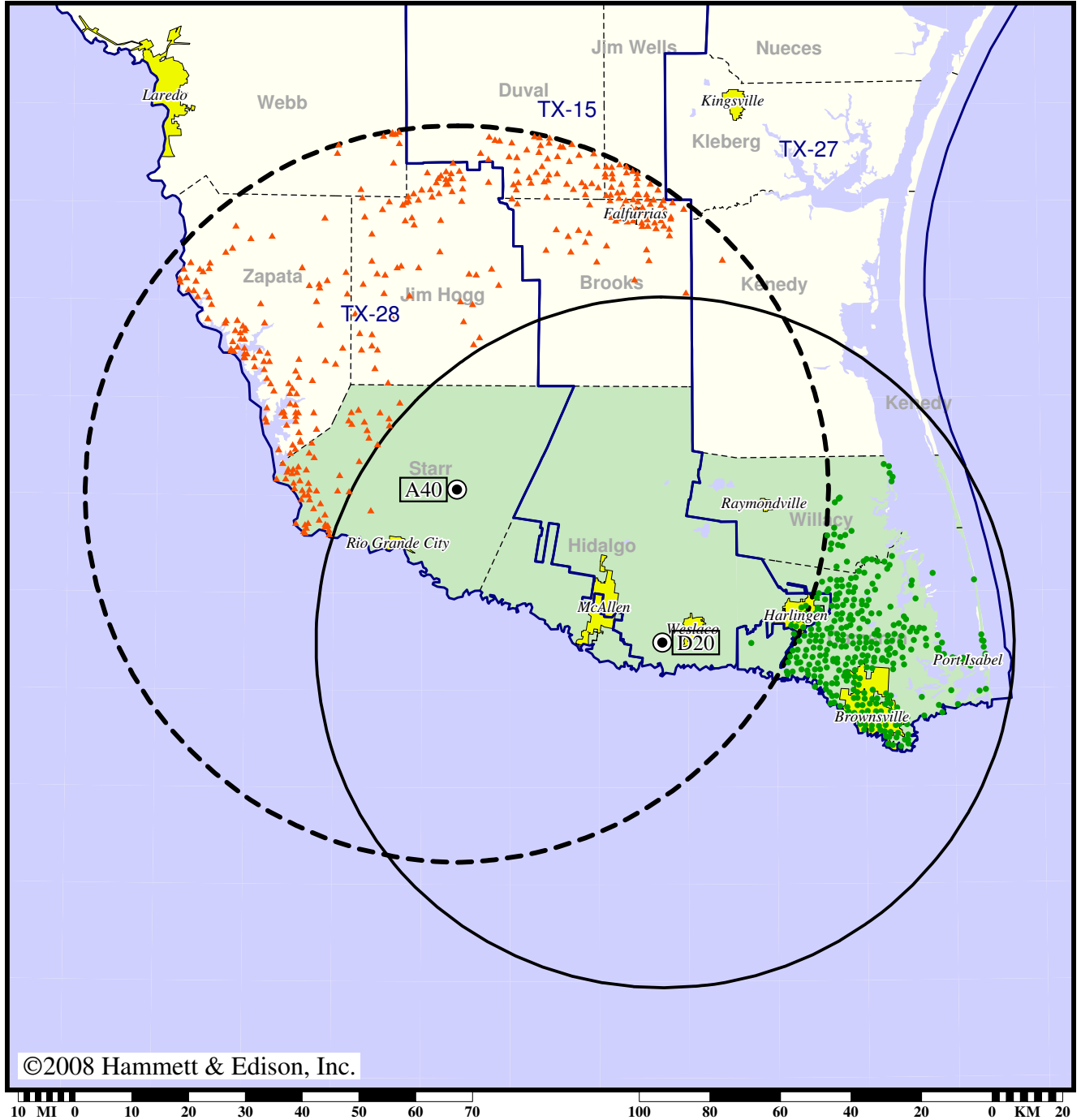
Analog Population Losing Service	34,298
Population Gaining Digital Service	246,743
Net Gain	212,445

TV Station KTLM • Analog Channel 40, DTV Channel 20 • Rio Grande City, TX

Expected Change In Coverage: Post-Transition Appendix B Facility

Appendix B (solid): 1000 kW ERP at 287 m HAAT
vs. Analog (dashed): 5000 kW ERP at 577 m HAAT

Market: Harlingen-Weslaco-Brownsville-McAllen, TX



- Coverage gained after DTV transition
- (no symbol) No change in coverage
- ▲ Coverage lost after DTV transition

Harlingen-Weslaco-Brownsville-McAllen, TX

KTLM

Population Receiving Analog Service	724,763
Population Receiving Digital Service.....	971,173
Analog Population Losing Service	34,308
Population Gaining Digital Service	280,718
Net Gain	246,410