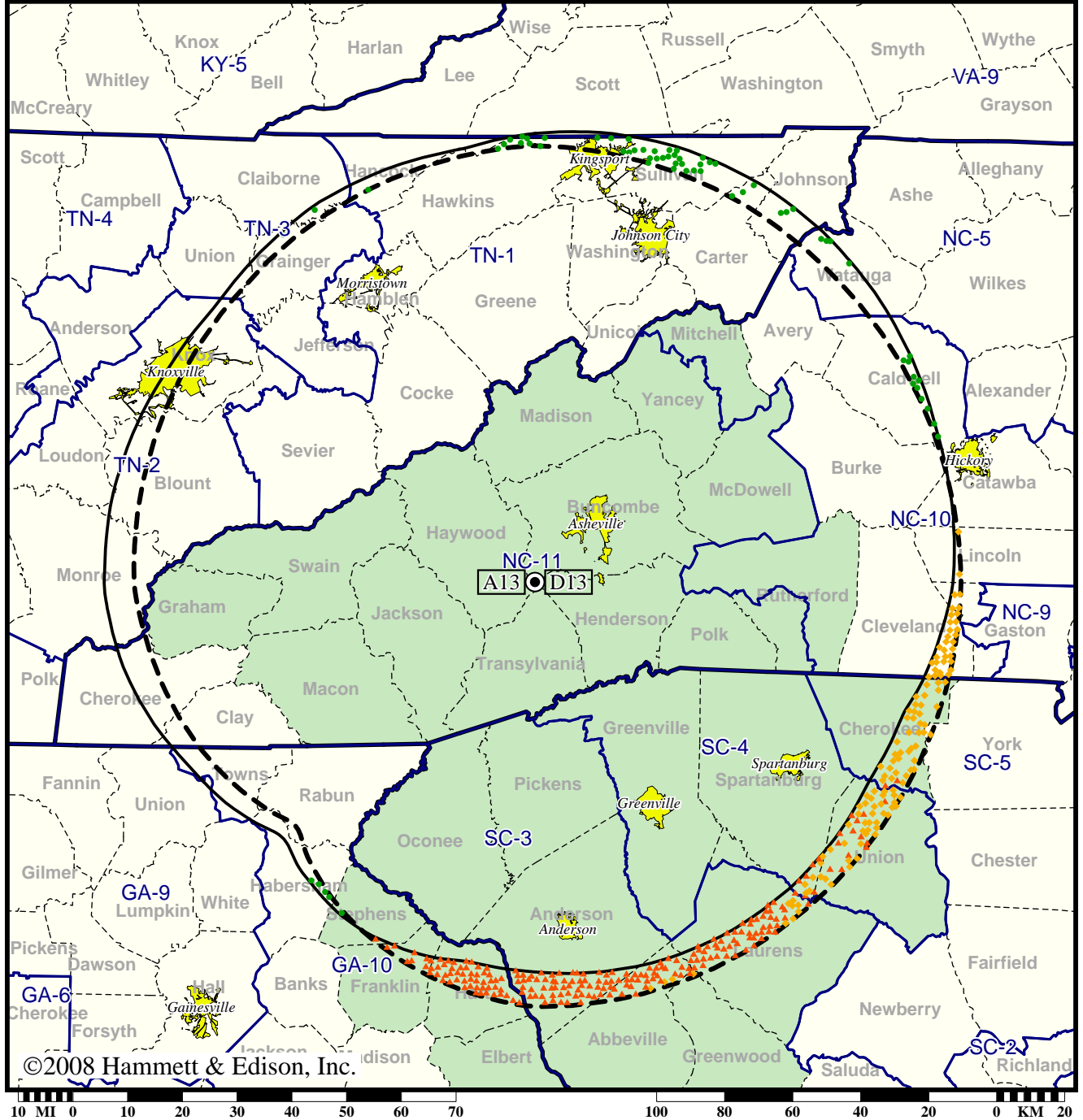


TV Station WLOS • Analog Channel 13, DTV Channel 13 • Asheville, NC

Expected Change In Coverage: Granted Construction Permit

CP (solid): 29.8 kW ERP at 853 m HAAT, Network: ABC
vs. Analog (dashed): 178 kW ERP at 853 m HAAT, Network: ABC

Market: Greenville-Spartanburg, SC-Asheville, NC



©2008 Hammett & Edison, Inc.

- Coverage gained after DTV transition
- (no symbol) No change in coverage
- ◆ Coverage lost but still served by same network
- ▲ Coverage lost and no other service by same network

Greenville-Spartanburg, SC-Asheville, NC

WLOS

Population Receiving Analog Service 1,770,135
Population Receiving Digital Service..... 2,113,104

The following statistics pertain only to the area outside
the analog service contour:

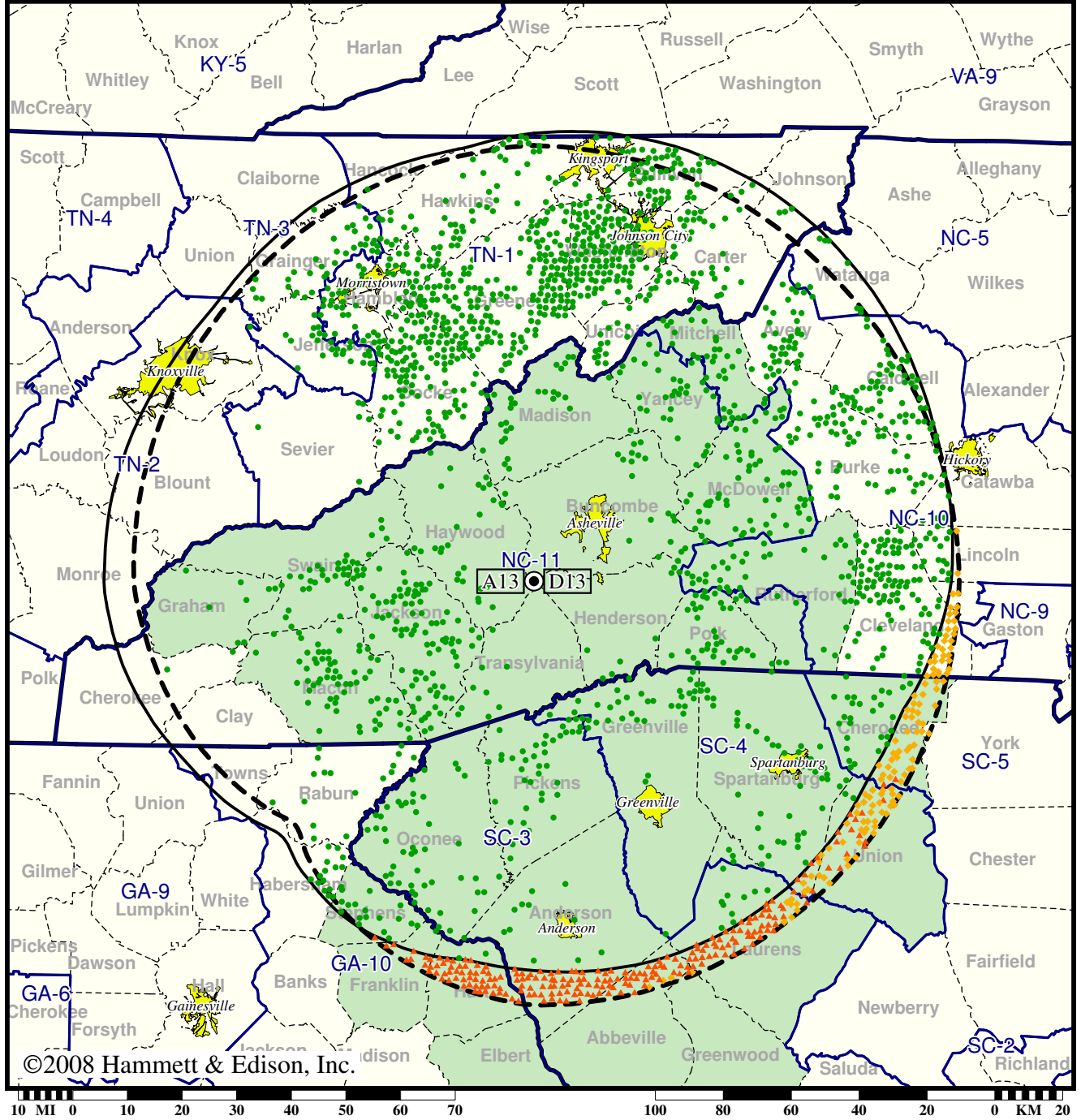
Analog Population Losing Service 64,979
Population Gaining Digital Service 22,570
Net Gain -42,409

TV Station WLOS • Analog Channel 13, DTV Channel 13 • Asheville, NC

Expected Change In Coverage: Granted Construction Permit

CP (solid): 29.8 kW ERP at 853 m HAAT, Network: ABC
 vs. Analog (dashed): 178 kW ERP at 853 m HAAT, Network: ABC

Market: Greenville-Spartanburg, SC-Asheville, NC



©2008 Hammett & Edison, Inc.

- Coverage gained after DTV transition
- (no symbol) No change in coverage
- ◆ Coverage lost but still served by same network
- ▲ Coverage lost and no other service by same network

Greenville-Spartanburg, SC-Asheville, NC

WLOS

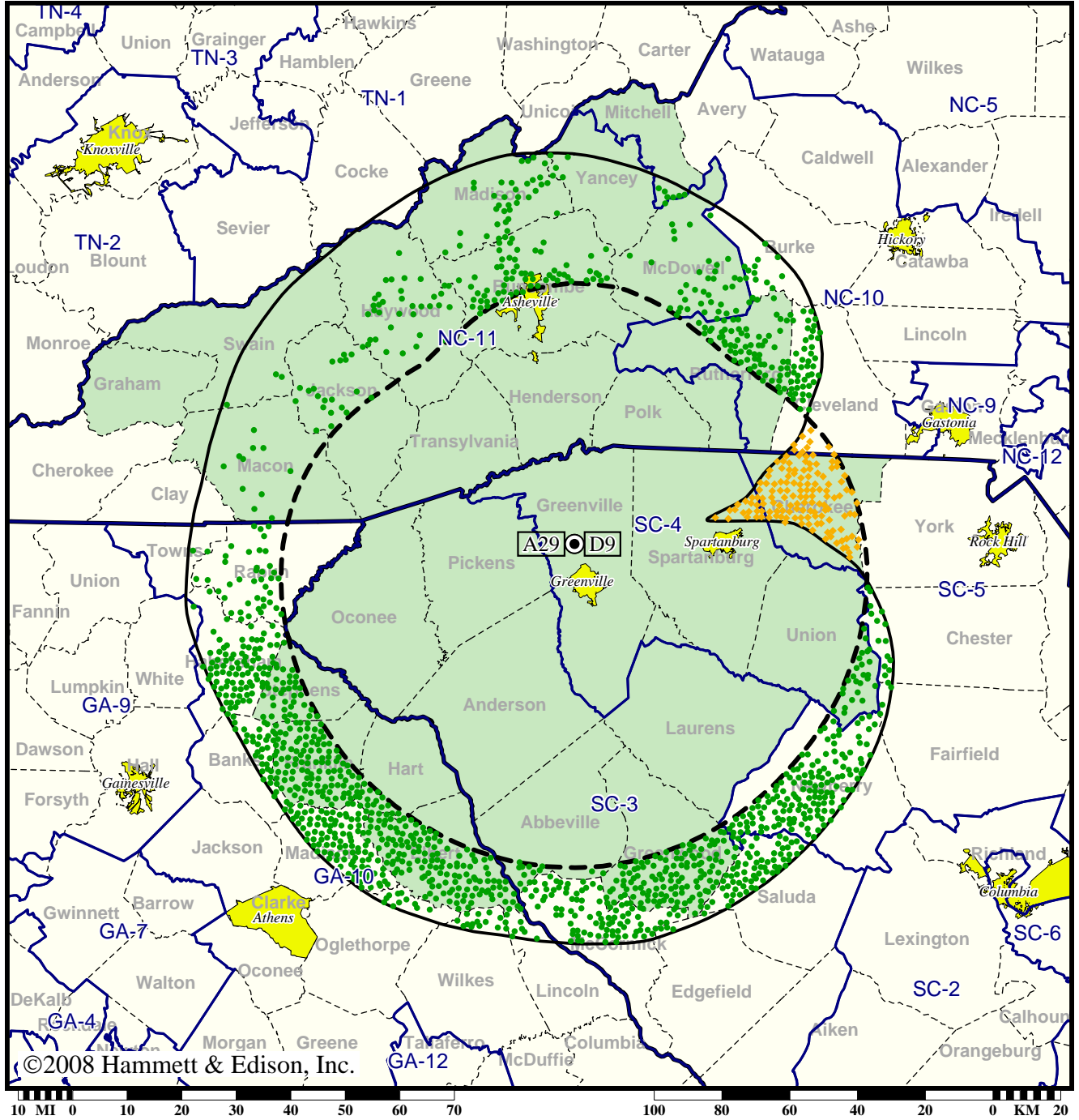
Population Receiving Analog Service	1,770,135
Population Receiving Digital Service.....	2,113,104
Analog Population Losing Service	65,619
Population Gaining Digital Service	408,588
Net Gain	342,969

TV Station WNTV • Analog Channel 29, DTV Channel 9 • Greenville, SC

Expected Change In Coverage: Granted Construction Permit

CP (solid): 102 kW ERP at 378 m HAAT, Network: PBS
vs. Analog (dashed): 5000 kW ERP at 392 m HAAT, Network: PBS

Market: Greenville-Spartanburg, SC-Asheville, NC



- Coverage gained after DTV transition
- (no symbol) No change in coverage
- ◆ Coverage lost but still served by same network

Greenville-Spartanburg, SC-Asheville, NC

WNTV

Population Receiving Analog Service 1,303,797
Population Receiving Digital Service..... 1,702,672

The following statistics pertain only to the area outside
the analog service contour:

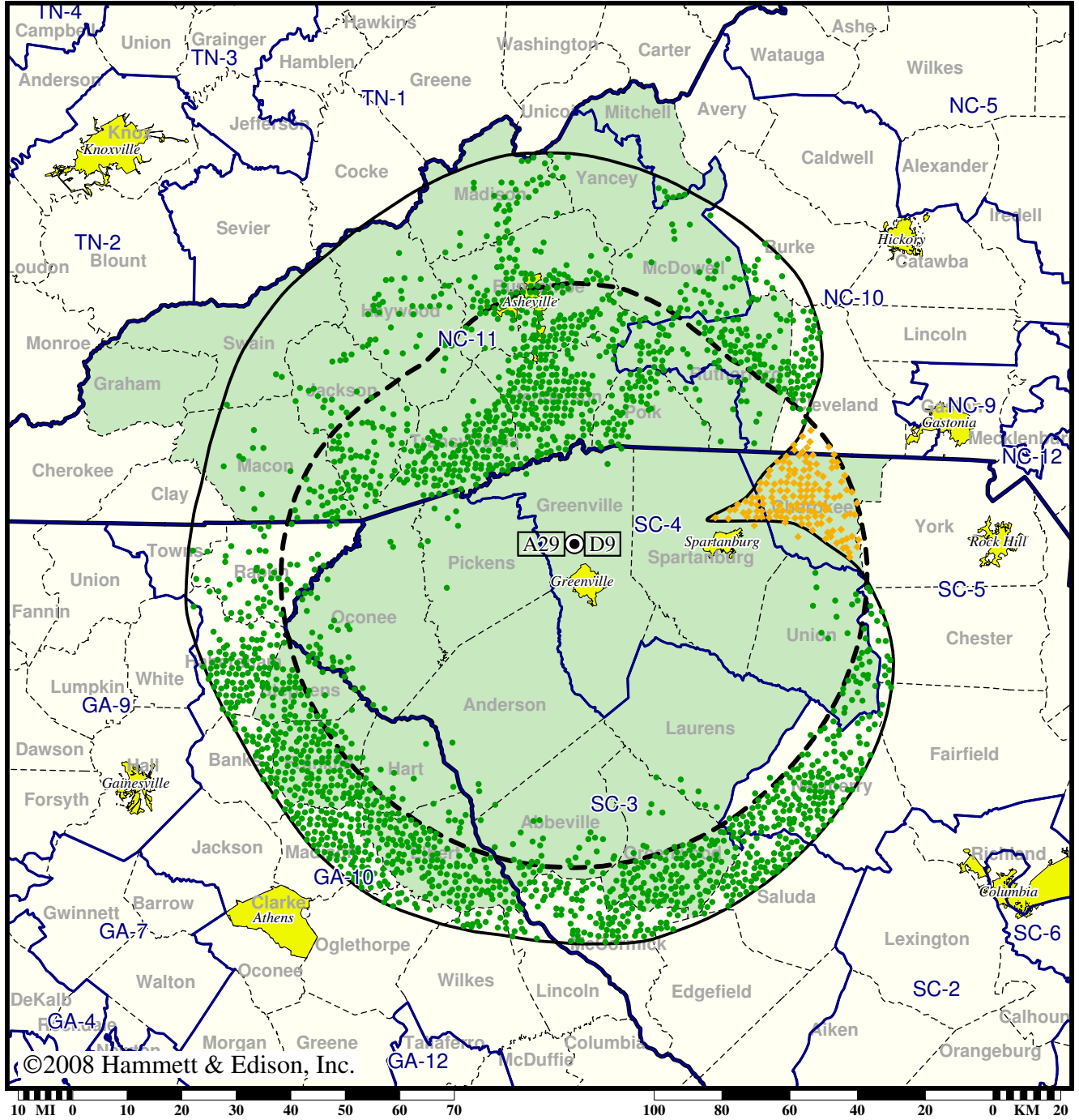
Analog Population Losing Service 46,389
Population Gaining Digital Service 212,674
Net Gain 166,285

TV Station WNTV • Analog Channel 29, DTV Channel 9 • Greenville, SC

Expected Change In Coverage: Granted Construction Permit

CP (solid): 102 kW ERP at 378 m HAAT, Network: PBS
vs. Analog (dashed): 5000 kW ERP at 392 m HAAT, Network: PBS

Market: Greenville-Spartanburg, SC-Asheville, NC



- Coverage gained after DTV transition
- (no symbol) No change in coverage
- ◆ Coverage lost but still served by same network

Greenville-Spartanburg, SC-Asheville, NC

WNTV

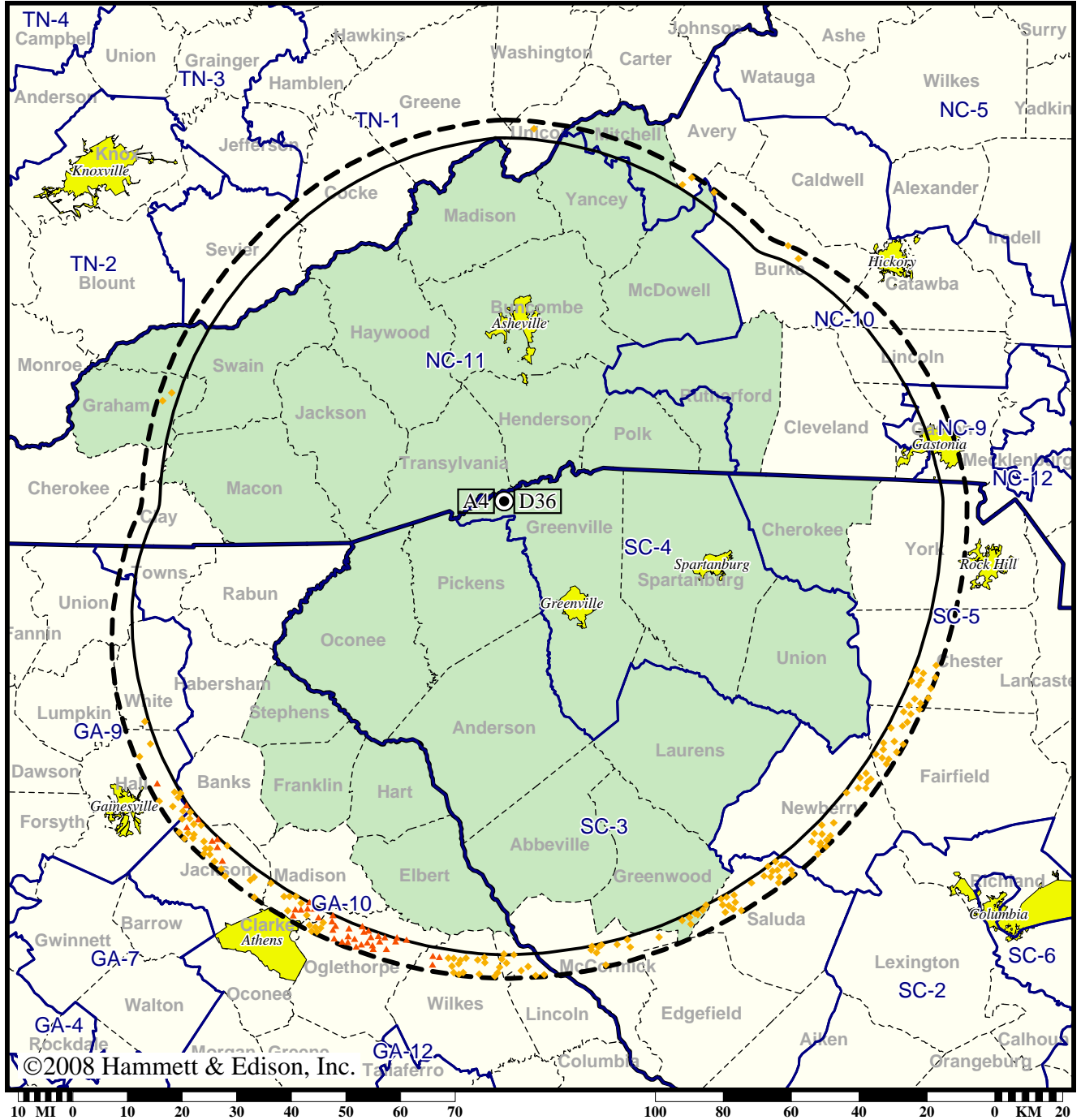
Population Receiving Analog Service	1,303,797
Population Receiving Digital Service.....	1,702,672
Analog Population Losing Service	46,940
Population Gaining Digital Service	445,815
Net Gain	398,875

TV Station WYFF • Analog Channel 4, DTV Channel 36 • Greenville, SC

Expected Change In Coverage: Granted Construction Permit

CP (solid): 1000 kW ERP at 596 m HAAT, Network: NBC
vs. Analog (dashed): 100 kW ERP at 610 m HAAT, Network: NBC

Market: Greenville-Spartanburg, SC-Asheville, NC



- (no symbol) No change in coverage
- ◆ Coverage lost but still served by same network
- ▲ Coverage lost and no other service by same network

Greenville-Spartanburg, SC-Asheville, NC

WYFF

Population Receiving Analog Service 1,841,564
Population Receiving Digital Service..... 1,998,749

The following statistics pertain only to the area outside
the analog service contour:

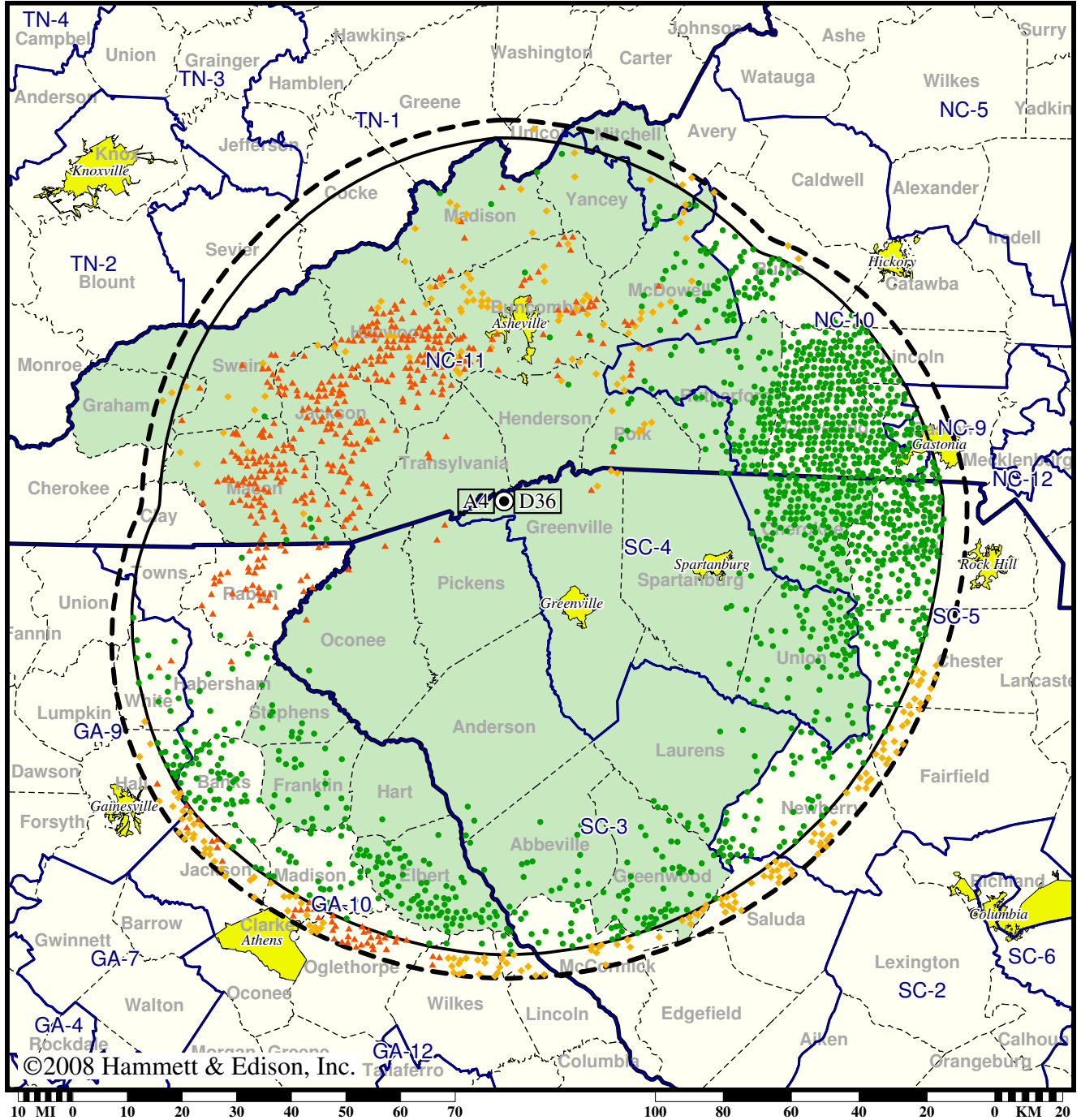
Analog Population Losing Service 20,192
Population Gaining Digital Service 0
Net Gain -20,192

TV Station WYFF • Analog Channel 4, DTV Channel 36 • Greenville, SC

Expected Change In Coverage: Granted Construction Permit

CP (solid): 1000 kW ERP at 596 m HAAT, Network: NBC
vs. Analog (dashed): 100 kW ERP at 610 m HAAT, Network: NBC

Market: Greenville-Spartanburg, SC-Asheville, NC



©2008 Hammett & Edison, Inc. Taylor

- Coverage gained after DTV transition
- (no symbol) No change in coverage
- ◆ Coverage lost but still served by same network
- ▲ Coverage lost and no other service by same network

Greenville-Spartanburg, SC-Asheville, NC

WYFF

Population Receiving Analog Service	1,841,564
Population Receiving Digital Service.....	1,998,749
Analog Population Losing Service	145,958
Population Gaining Digital Service	303,143
Net Gain	157,185