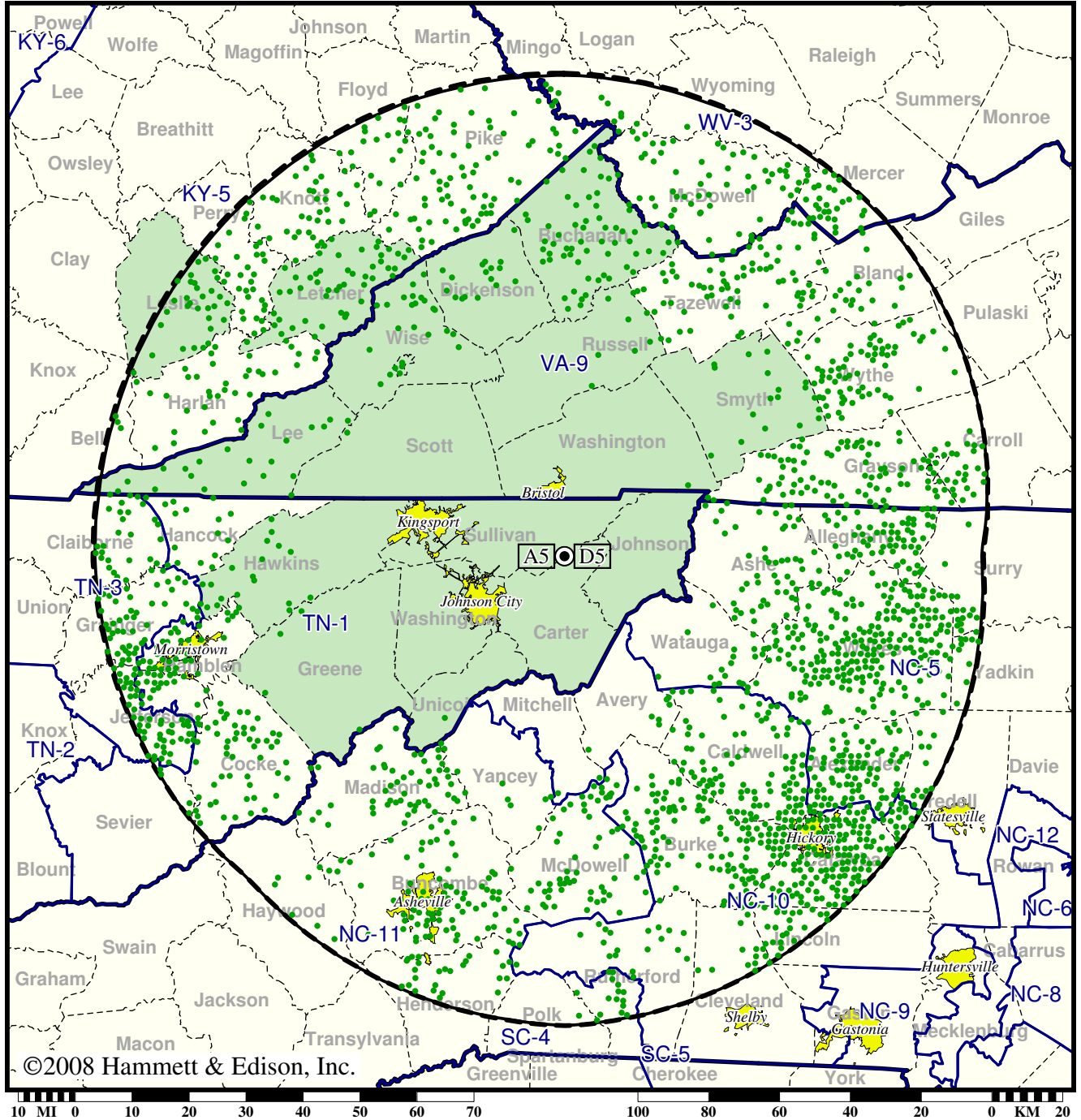


Station WCYB-TV • Analog Channel 5, DTV Channel 5 • Bristol, VA

Expected Change In Coverage: Granted Construction Permit

CP (solid): 7.10 kW ERP at 743 m HAAT, Network: NBC  
vs. Analog (dashed): 71.7 kW ERP at 741 m HAAT, Network: NBC

Market: Tri-Cities, TN-VA



©2008 Hammett & Edison, Inc.

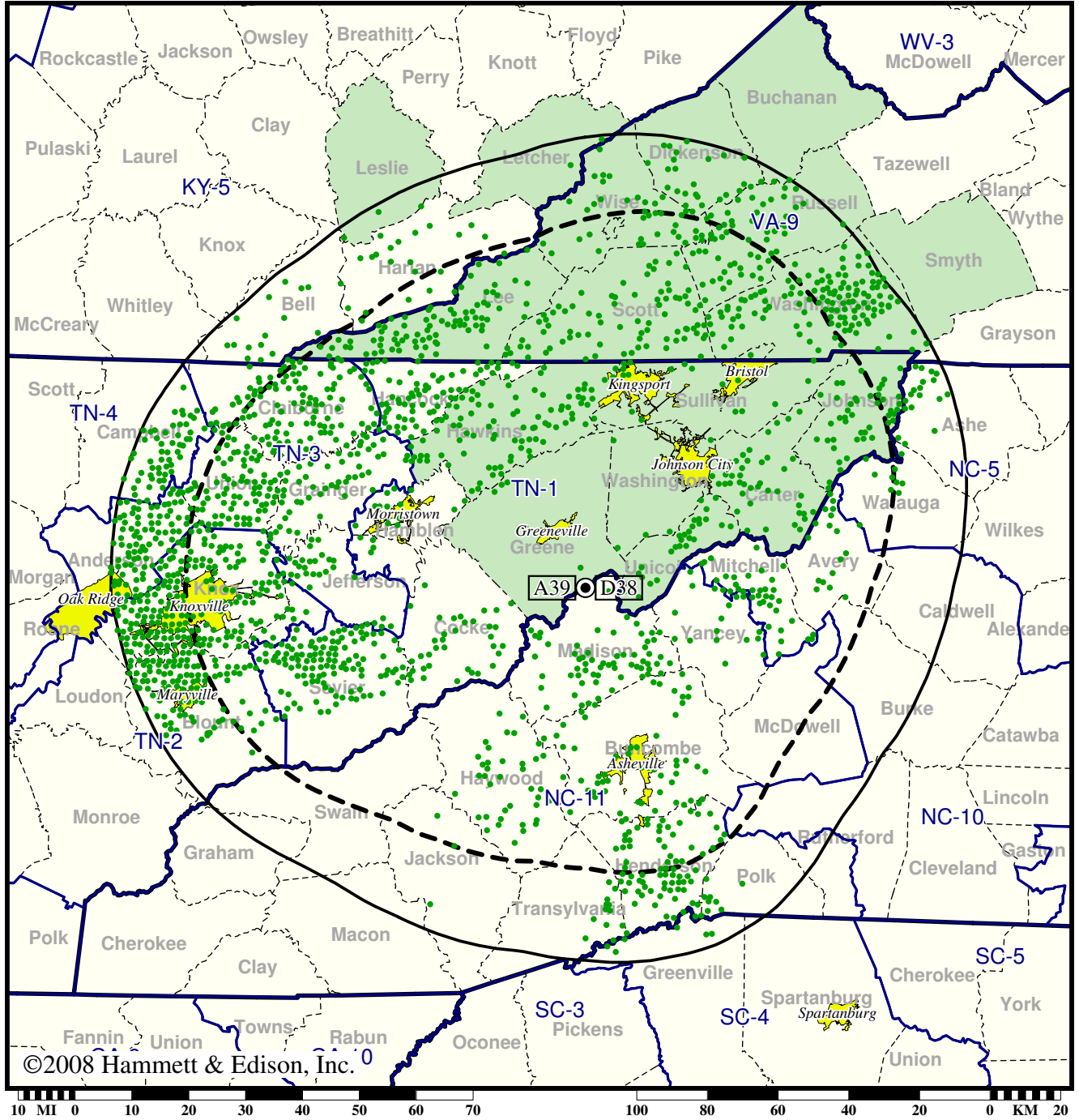
- Coverage gained after DTV transition
- (no symbol) No change in coverage

TV Station WEMT • Analog Channel 39, DTV Channel 38 • Greenville, TN

Expected Change In Coverage: Licensed Operation

Licensed (solid): 1000 kW ERP at 795 m HAAT, Network: Fox  
vs. Analog (dashed): 3020 kW ERP at 795 m HAAT, Network: Fox

Market: Tri-Cities, TN-VA



©2008 Hammett & Edison, Inc.

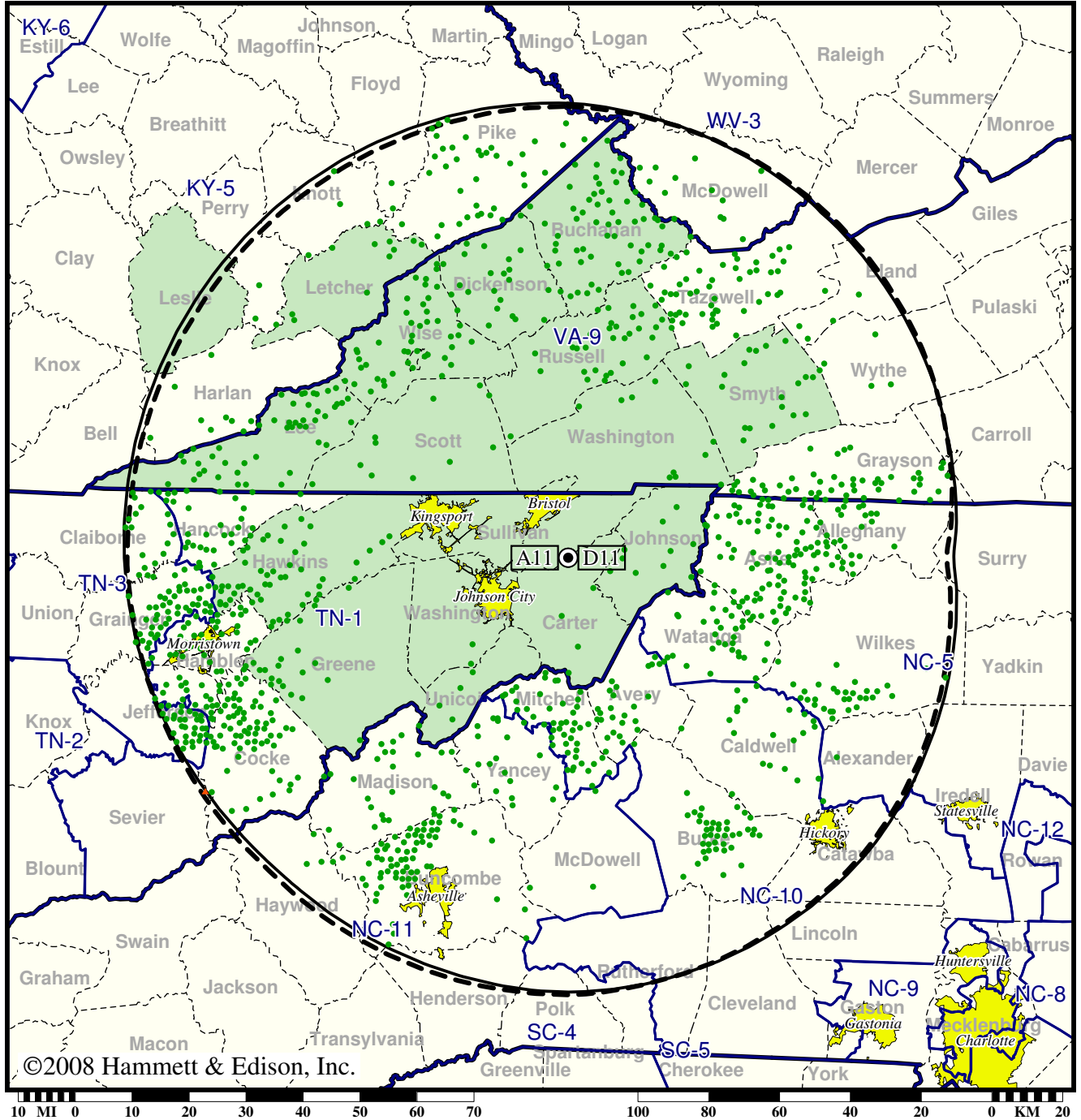
- Coverage gained after DTV transition
- (no symbol) No change in coverage

Station WJHL-TV • Analog Channel 11, DTV Channel 11 • Johnson City, TN

Expected Change In Coverage: Granted Construction Permit

CP (solid): 25.5 kW ERP at 708 m HAAT, Network: CBS  
 vs. Analog (dashed): 245 kW ERP at 707 m HAAT, Network: CBS

Market: Tri-Cities, TN-VA



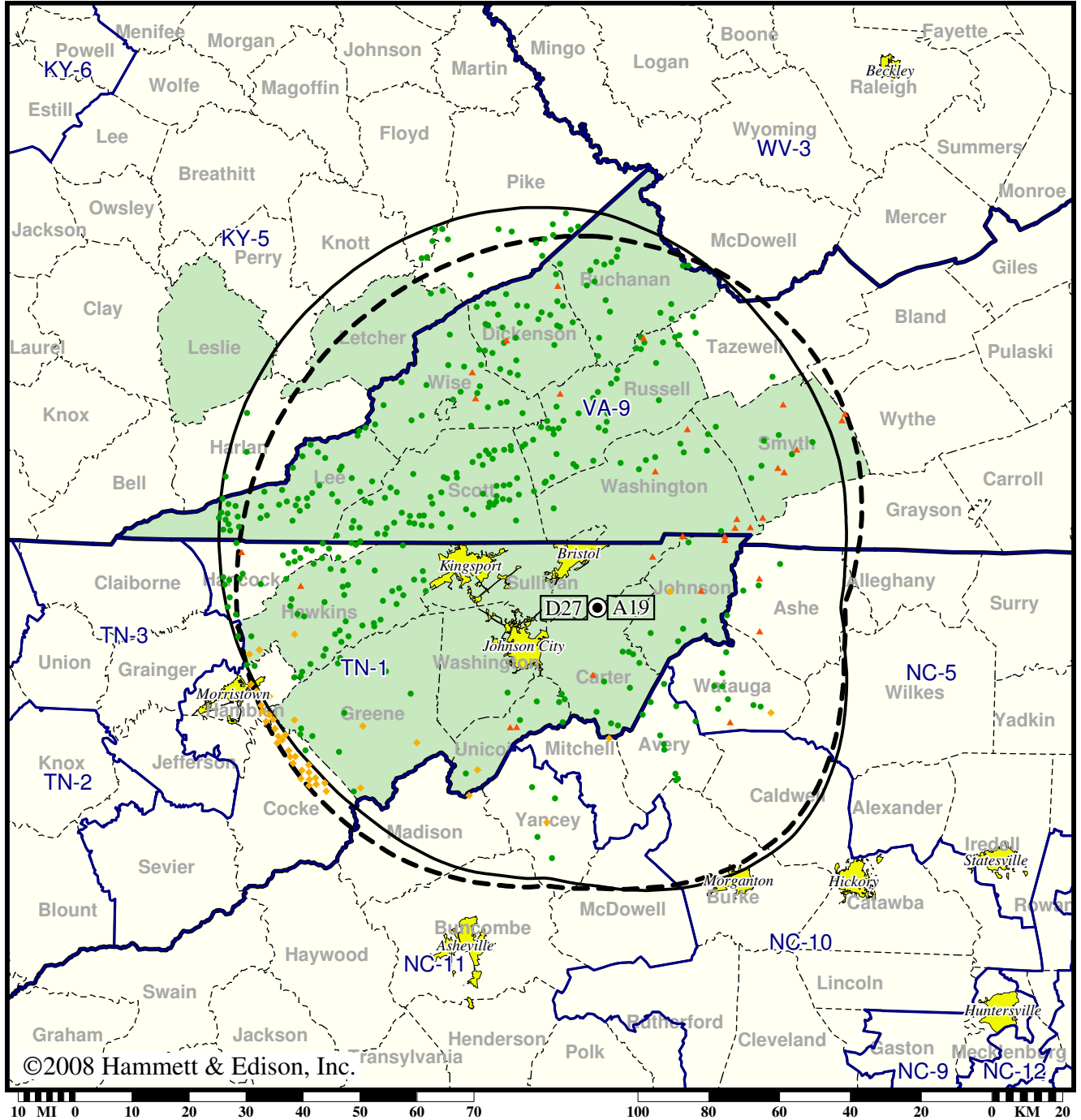
- Coverage gained after DTV transition
- (no symbol) No change in coverage
- ▲ Coverage lost after DTV transition

Station WKPT-TV • Analog Channel 19, DTV Channel 27 • Kingsport, TN

Expected Change In Coverage: Post-Transition Appendix B Facility

Appendix B (solid): 200 kW ERP at 699 m HAAT, Network: ABC  
vs. Analog (dashed): 1260 kW ERP at 707 m HAAT, Network: ABC

Market: Tri-Cities, TN-VA



- Coverage gained after DTV transition
- (no symbol) No change in coverage
- ◆ Coverage lost but still served by same network
- ▲ Coverage lost and no other service by same network

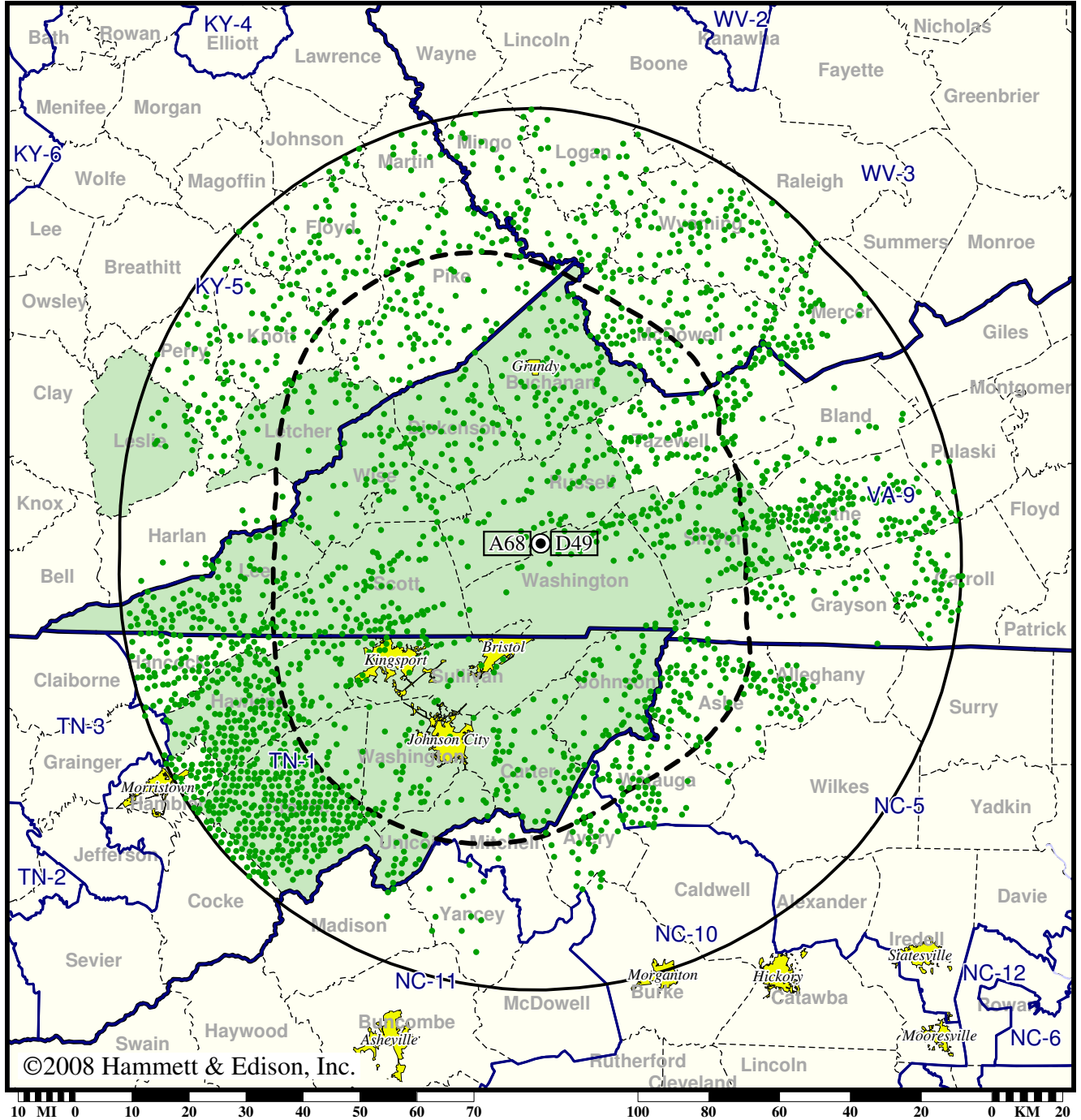


TV Station WLFV • Analog Channel 68, DTV Channel 49 • Grundy, VA

Expected Change In Coverage: Post-Transition Appendix B Facility

Appendix B (solid): 1000 kW ERP at 662 m HAAT  
vs. Analog (dashed): 1150 kW ERP at 763 m HAAT

Market: Tri-Cities, TN-VA



©2008 Hammett & Edison, Inc.

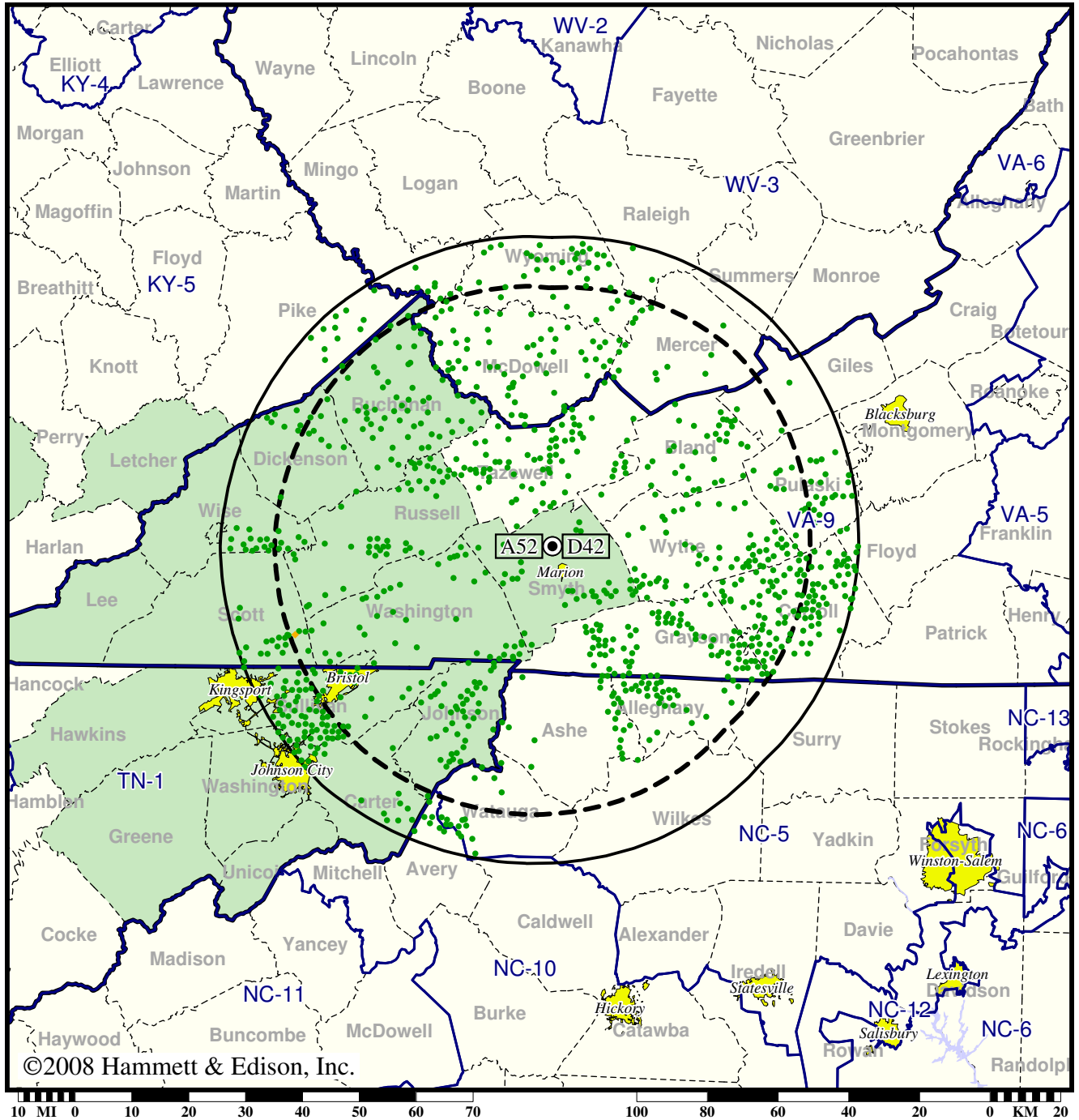
- Coverage gained after DTV transition
- (no symbol) No change in coverage

Station WMSY-TV • Analog Channel 52, DTV Channel 42 • Marion, VA

Expected Change In Coverage: Licensed Operation

Licensed (solid): 100 kW ERP at 448 m HAAT, Network: PBS  
vs. Analog (dashed): 741 kW ERP at 452 m HAAT, Network: PBS

Market: Tri-Cities, TN-VA

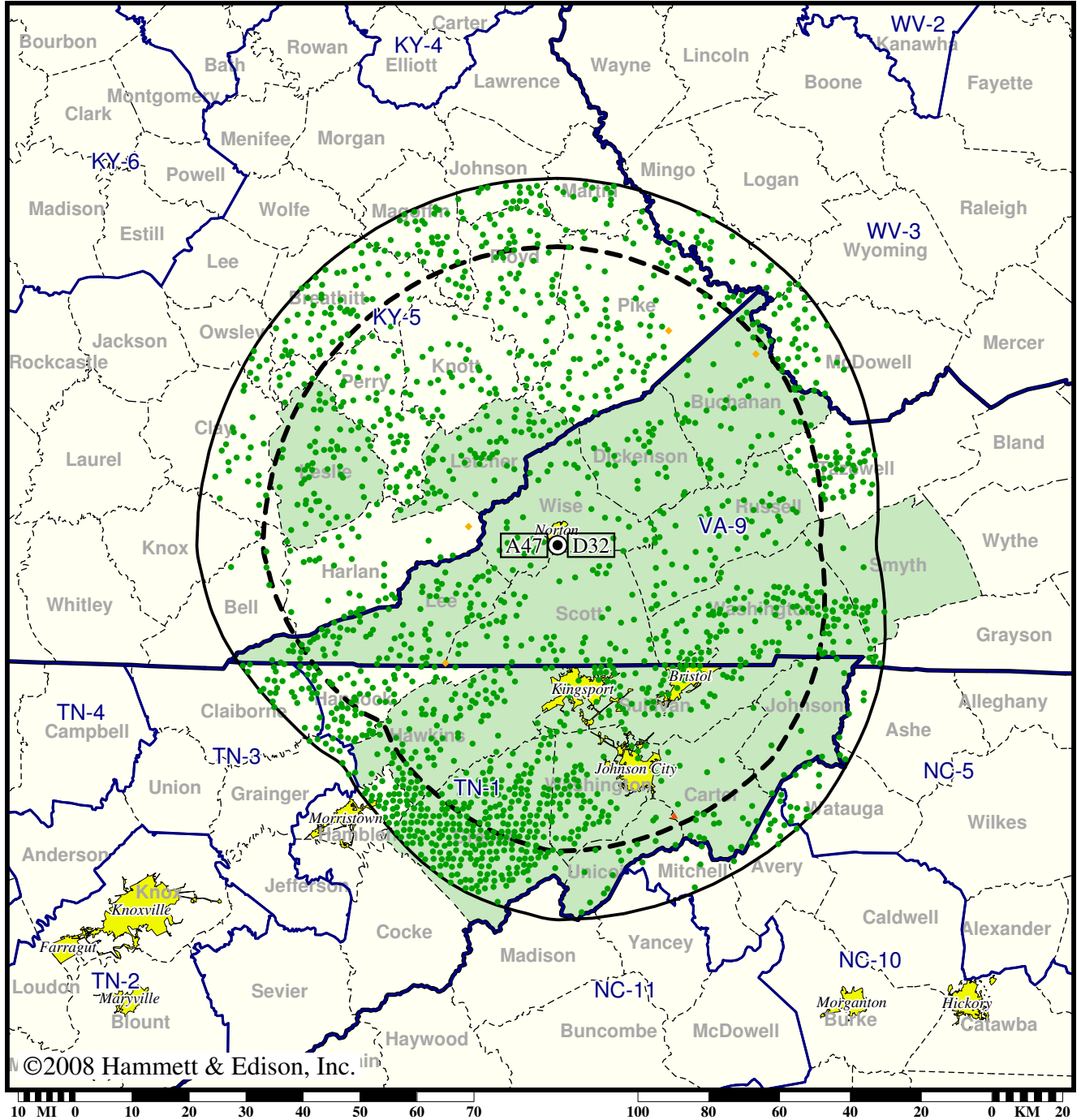


Station WSBN-TV • Analog Channel 47, DTV Channel 32 • Norton, VA

Expected Change In Coverage: Licensed Operation

Licensed (solid): 100 kW ERP at 591 m HAAT, Network: PBS  
vs. Analog (dashed): 631 kW ERP at 591 m HAAT, Network: PBS

Market: Tri-Cities, TN-VA



- Coverage gained after DTV transition
- (no symbol) No change in coverage
- ◆ Coverage lost but still served by same network
- ▲ Coverage lost and no other service by same network